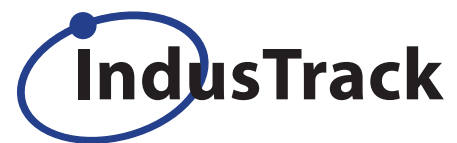


SECURE MONITORING WITH CUSTOM SENSORS

Industrack provides highly-secured, custom sensor-based solutions for vehicle monitoring and management. Our patent pending, innovative tracking solutions allow our customers to collect, manage, and evaluate information, maximizing their business efficiency and increasing quality customer service.



Advanced Security | Superior Sensors | Integrated Solutions

877-412-8697 Allan.Hansen@IndusTrack.com 3545 Offshore Drive, Lake Havasu City, AZ 86406

GPS TRACKING BENEFITS

REDUCE FUEL AND MAINTENANCE COSTS:

The average operating cost per vehicle is about \$2.50 per mile. A company can reduce at least 25 miles per week for each vehicle with a GPS tracking system. This is accomplished by reducing excessive speeding, hard braking, quick acceleration and reducing idle times.

INCREASE EFFICIENCY:

A digital log of routes and stops are key for determining whether your fleet is running efficiently. Idle time and stops at unauthorized locations can become costly for your business; with a GPS system, you can ensure that this does not become a problem.

VALIDATE SERVICE CALLS:

By simply looking at the history of a vehicle, you can quickly tell when it arrived and how long it was at a particular service call. There is a clear record which eliminates assumptions and guesswork.

MORE ACCURATE BILLING:

Using GPS tracking creates a digital log of time speed and route used by your fleet. Time and fuel costs used specifically on the job can be accurately calculated with this digital log.

REDUCE DELAY AND TIME SPENT AT UNAUTHORIZED LOCATIONS:

With our software you can not only track but easily establish an alert system for events like a driver going outside of a designated area, staying idle for too long, and/or speeding.

RECEIVE LOWER INSURANCE RATES BY UP TO 35%:

Many insurance companies offer discounted premiums for vehicles that have a real time GPS system.

IMPROVE RESPONSE TIME & CUSTOMER SERVICE:

By knowing where your vehicles is at all times on a real time map, dispatchers can easily send the nearest vehicle when a new job arises. This saves both money and time.

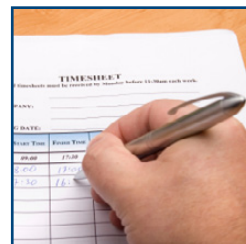
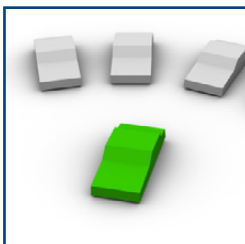
Additionally, digital record is not subject to human error and makes the process of record keeping more in-depth without any additional hassle. This will reduce paperwork by keeping a log of distance, route, speed, stops, and arrival times.

IMPROVE SAFETY & DRIVER RESPONSIBILITY:

Drivers who know they are being monitored are more careful. This can reduce accidents.

PREVENT FRAUDULENT CLAIMS:

With a good digital log, you can prove that your fleet was where it needed to be when it needed to be there.



ITRACKER SOFTWARE

Industrack's ITracker software provides a single interface to perform tracking, dispatching, and fleet management operations. ITracker communicates with all Industrack hardware modules used for monitoring vehicles and remote sensors. ITracker is easy to navigate, highly scalable, and can be customized to meet your needs.

PRODUCT FEATURES

Tracks vehicle location, heading, and speed in real time 24/7
Easily scalable
Easy integration with leading industry software

Proactive device and network monitoring for improved efficiency
Available in hosted and non-hosted models

SOFTWARE FEATURES

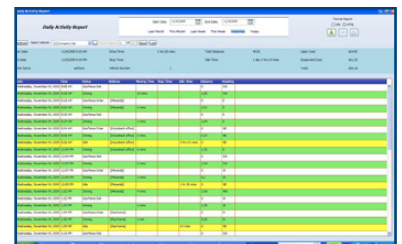
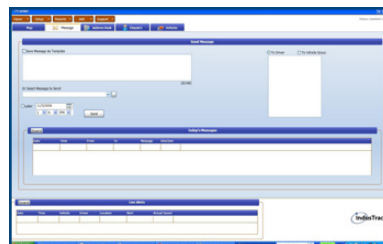
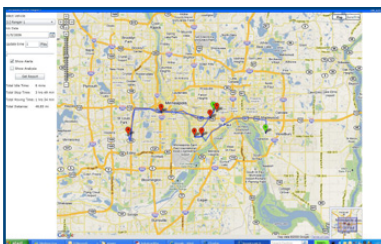
Live maps
Traffic information
Route analysis
Address book
Unlimited geo fences
Employee time cards
Create and assign jobs/deliveries
SMS to drivers
Two-way communication using Garmin
Integrate easily with other software

Receive live alerts or via E-mail

Speeding
Stop
Idling
Out of geo fence

Reports

Daily activity
After hour report
Route reply or breadcrumb report
Message log
Job report
Mileage/speed/direction
Stop
Idle
Ignition on/off



The MT 100 is a certified quad-band integrated platform that provides complete GPS/GSM functionality for mobile tracking applications. This compact product provides a low cost solution for small to mid-size fleets.

KEY FEATURES

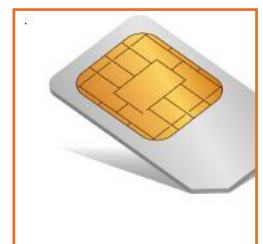
- Ideal for powered vehicles (trucks, vans, cars...)
- Integrated GPS and GSM chips
- Small ruggedized plastic enclosure
- Tracks vehicles virtually anywhere
- Easy to mount

APPLICATIONS

- Vehicle tracking
- Trucks
- Ready mix trucks
- Oil tankers
- Cargo vans
- Lawn care equipment
- Water tankers
- Snow removal equipment
- Dump trucks
- Construction machinery
- Cleaning trucks
- Many others

HARDWARE SPECIFICATIONS

Dimensions Housing	64.8x61x25.6 mm Rugged Plastic Enclosure
GSM Functionality Frequency Transmit Power	Quad Band 850/900/1800/1900 Class 4 (2W@850/1900Mhz) Class 1 (1W @1800/1900Mhz)
GPS Functionality Channel Sensitivity	14
Environment Operating Storage Humidity Vibration	-30C to 85C -40C to 85C Up to 95% non condensing In accordance with SAE J1211
Power DC Voltage	7-40V GSM 850/900 1TX/1RX 230 mA, Idle< 45 mA GSM1800/1900 1TX/1RX 175 mA, Idle< 45 mA Sleep Mode <30 mA
Certification FCC GCF PTCRB CE Mark RoHS compliant Emark Industry Canada	Parts 15, 22 & 24 Version 3.27.0 Version 3.12.0 Yes Yes Yes Yes



MT 101 (MOBILE DATA TERMINAL)

The MT101 Garmin LCD display enables two way communication between the dispatcher and the driver. This product is an add-on to the MT 100 and MT 200 devices.

KEY FEATURES

Two-way text communication between dispatcher and driver

Voice prompts (e.g. "Turn right in 500 ft.")

Auto re-route (fast off-route and detour recalculation)

FM traffic compatible

Speed limit indicator (displays speed limit for most major roads)

ecoRoute™ (calculates a more fuel-efficient route)

Garmin Garage™ vehicles compatible (download car-shaped icons to your device)

Garmin Lock™ (anti-theft feature)

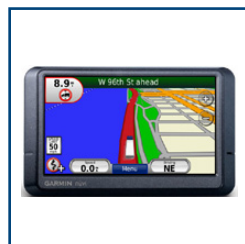
Touchscreen

HARDWARE SPECIFICATIONS

Unit dimensions, WxHxD:	3.9"W x 2.9"H x .8"D (9.8 x 7.4 x 2.0 cm)
Display size, WxH:	2.8"W x 2.1"H (7.2 x 5.4 cm); 3.5" diag (8.9 cm)
Display resolution, WxH:	320 x 240 pixels
Display type:	QVGA color antiglare TFT with white backlight
Weight:	5.2 ounces (147.42 g)
Battery:	Rechargeable lithium-ion
Battery life:	up to 4 hours
Waterproof:	No
High-sensitivity receiver:	Yes
RoHS version available:	Yes

MAPS & MEMORY

Basemap:	Yes
Preloaded maps:	Yes (regional)
Ability to add maps:	Yes
Built-in memory:	Internal solid state
Waypoints/favorites/locations:	1000



MT 200 (Sensor-Based Tracking)

The MT 200 is our integrated, patent pending tracking and monitoring solution with customizable sensors. This innovative solution is designed to address cargo security, product conditions, and driver safety. By utilizing a combination of diagnostic and location data tracking, our state-of-the-art internal and external sensor can prevent thefts, improve performance, and minimize maintenance costs.

KEY FEATURES

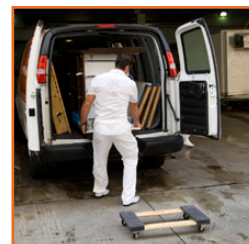
- OBD II port for engine diagnostic
- 2 RS232 ports to connect external devices such as printers and scanners
- Two RS485 ports for external sensors
- 8 Digital and 2 analog inputs
- Patent pending security features
- Internal memory
- Temperature
- Vibration sensor
- Motion detector
- External sensors (*rotation sensor , fluid level sensor, on/off sensor, weight sensor, direction detection sensor*)

APPLICATIONS

- Firetrucks:** Monitor foam and water level. Run remote diagnostics on equipment.
- School Buses:** Using RFID and GPS, learn the exact location of your child and the bus.
- Trailers:** Monitor trailer temperature, radiation, cargo door, and contents.
- Readymix:** Learn speed and direction of the drum rotation sensor, actual water added, and wash out cycle.
- Custom Applications:** We specialized in sensor based custom applications for any trucking environment.

HARDWARE SPECIFICATIONS

Housing	Rugged Plastic Enclosure
GSM Functionality Frequency Transmit Power	Quad Band 850/900/1800/1900 Class 4 (2W@850/1900Mhz) Class 1 (1W @1800/1900Mhz)
GPS Functionality Channel	20
Environment Operating Storage Humidity Vibration	-30C to 85C -40C to 85C Up to 95% non condensing In accordance with SAE J1211
Integrated Sensors On Board Sensors Vibration Accelerometer Gyro Temperature	Yes Yes Yes Yes Yes
Certification FCC GCF PTCRB CE Mark RoHS compliant Emark Industry Canada	Parts 15, 22 & 24 Version 3.27.0 Version 3.12.0 Yes Yes Yes Yes



TESTIMONIALS & PARTNERS

TESTIMONIALS

“After installing the Industrack GPS tracking solution, we are saving \$2000 a month on fuel.”

—Mark Miles, President
Green Guardian

“Safety is very important at Loram and with GPS tracking devices we can monitor the speed and location of our vehicles. This can potentially save us \$100,000 a year.”

—Nadja Baer, Service Manager
Loram Maintenance of Way

“We run seven days a week and since the installation of the GPS tracking solution, we have significantly reduced customer and driver complaints. This alone will amount to a savings of \$30,000 a year. Having the Industrack GPS devices in our trucks gave us peace of mind.”

—Blaine Krugard, Operational Manager
Bioclean

INDUSTRACK PARTNERS

