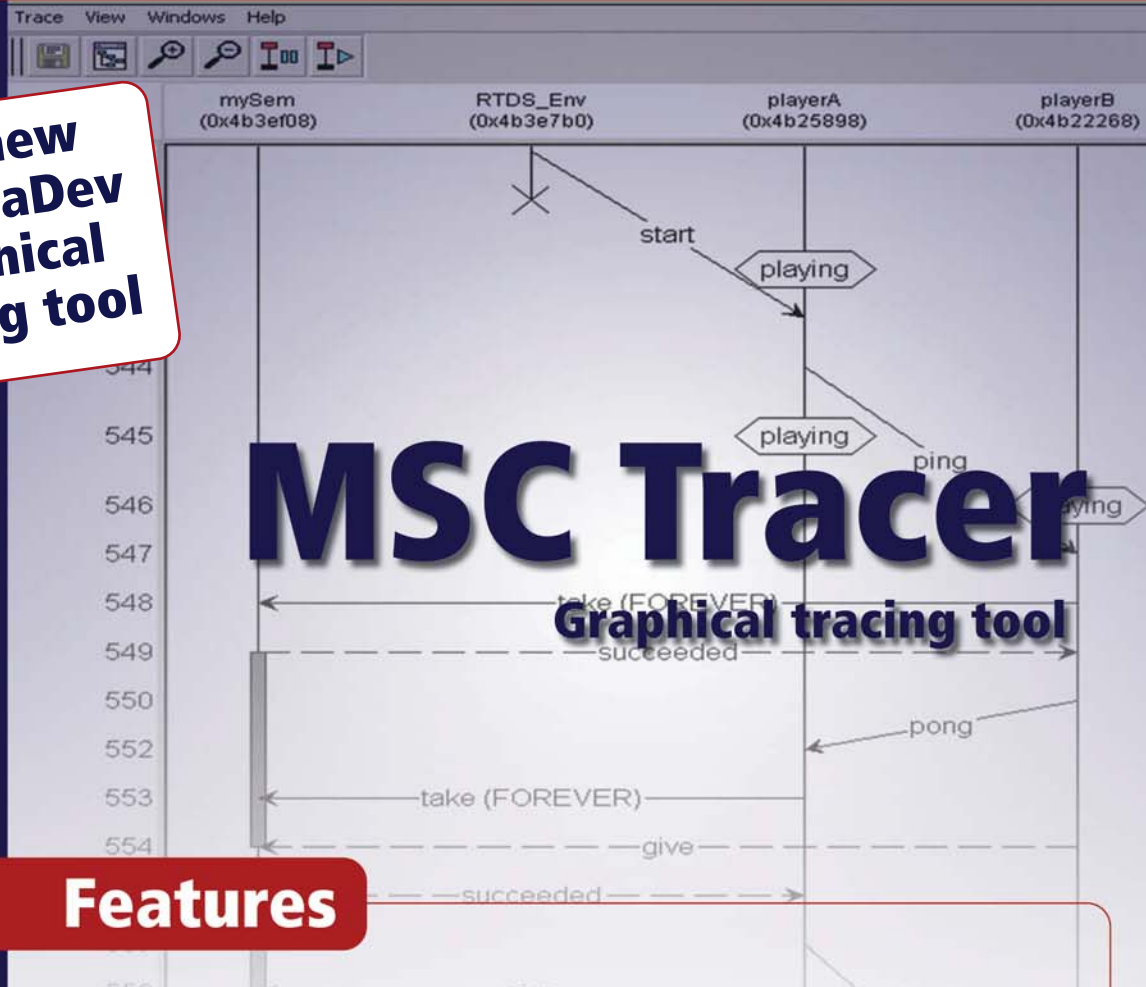




The new  
PragmaDev  
graphical  
tracing tool



## Features

PragmaDev MSC tracer is a graphical tracing tool based on ITU-T Message Sequence Chart and on OMG UML2.0 Sequence Diagram standards. It provides graphical representations of :

- Tasks,
- States,
- Messages,
- Semaphores,
- Timers,
- Objects.

Each event is related to system time information.

## Benefits

Trace on-line or off-line your target behavior with a standard graphical representation.

- Self-document your test campaigns,
- Check non-regression,
- Easy connexion.



## Easy connexion

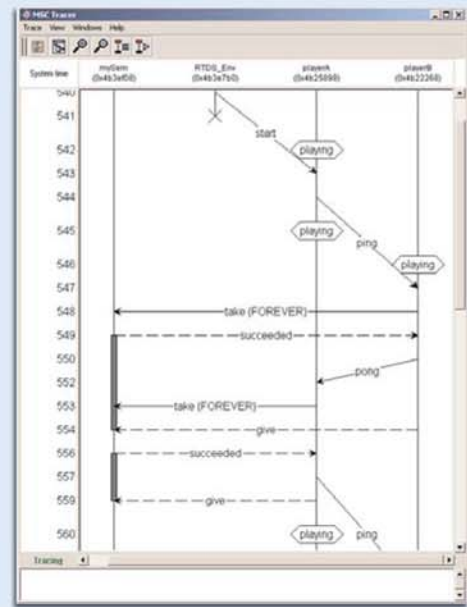
Connexion to the tracer is done through a socket in text mode. Commands are human readable with a possibility of acknowledgement of each information received.

## Integration in your testing or development environment

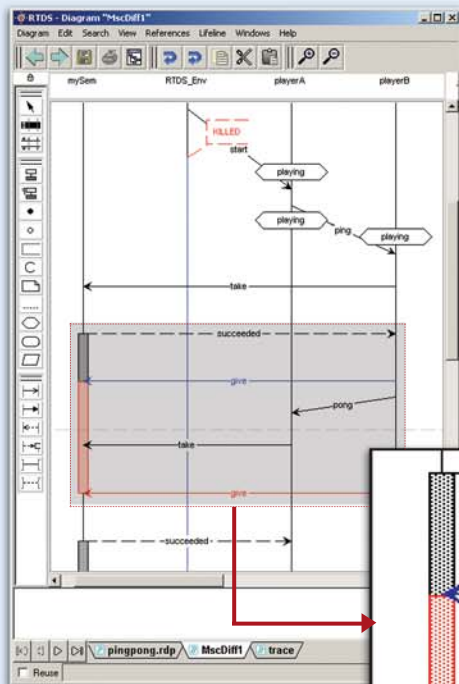
The tracer can be started graphically or in batch mode and control commands can be received through the socket.

## Integration with Real Time Developer Studio

PragmaDev Real Time Developer Studio automatically supports MSC tracer interface. Applications generated by Real Time Developer Studio code generator embeds MSC Tracer information allowing to directly trace execution on target live through an IP connexion.



▲ MSC trace with messages, states, and semaphores



Diff in the MSC editor ▲

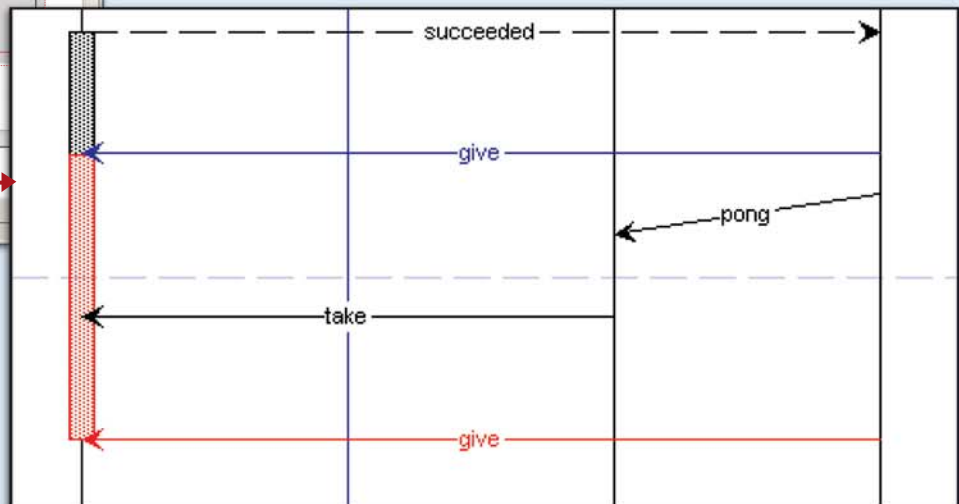
A semaphore give inversion ► has been detected.

## Easy documentation

- Edit the MSC traces with the included MSC editor.
- Generate PNG, PostScript and HTML or copy/paste to word processors for easy documentation.

## Conformance

Visually compare MSC diagrams to check conformance to a specification or non-regression of your system under test.



## Licensing and supported platforms

MSC Tracer runs on Windows, Solaris, and Linux platforms. MSC Tracer uses floating FlexLm licenses that can be distributed over a network.

## • Contact

PragmaDev  
18, rue des Tournelles  
75004 Paris France  
Tel : +33 1 42 74 15 38  
Fax : +33 1 42 74 15 58  
<http://www.pragmadev.com>  
mail : [info@pragmadev.com](mailto:info@pragmadev.com)