

## Compact Force Gauge (CFG +)

- Accuracy  $\pm 0.5\%$  of full scale
- Peak hold in tension and compression
- Selectable units of measurement  
N, mN, lbf, ozf, kgf and gf
- RS232 for easy data transmission
- Lightweight plastic case
- Overload warning
- Auto-off function
- CE Mark

**NEW**  
with RS232  
output



The CFG+ digital force gauge with RS232 output provides an economical solution for simple tension and compression testing. Powered by AAA batteries, the CFG+ can be used handheld or fixed to a manual or motorised test stand.

A simple digital alternative to traditional analogue spring balances, the CFG+ is ideal for users with a limited budget, who only measure on an occasional basis for non-critical applications.

The CFG+ is available in 3 models - 50N, 200N and 500N (11lbf, 44lbf and 110lbf) - and comes complete with a set of accessories, so you can start testing immediately.



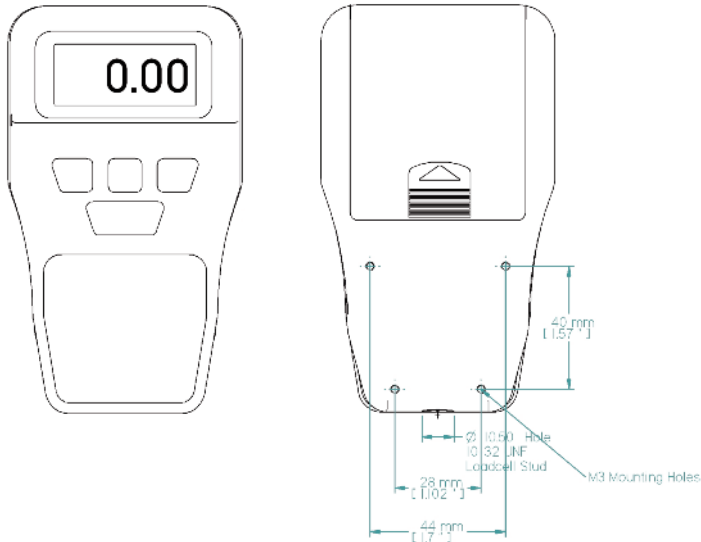
CFG+ Accessories



Tensile Test on a Drawer

cost-effective  
easy-to-use  
durable

## Dimensions



## Optional Extras

### CFG+ Mounting Plate

Connect your CFG+ to a Mecmesin test stand for a complete test system



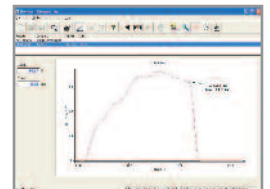
### Cable CFG+ to RS232

Connect your CFG+ to a peripheral device e.g. PC for easy data transmission of test results



### Emperor™ Lite

Expand the functionality of the CFG+ with Emperor™ Lite data acquisition and plotting software. Analyse test results and view data in graphical format



## Specifications

Model No.	Part No.	N	Capacity x Resolution	
			kgf	lbf
CFG+ 50	860 - 021	50 x 0.05	5 x 0.005	11 x 0.01
CFG+ 200	860 - 022	200 x 0.2	20 x 0.02	44 x 0.05
CFG+ 500	860 - 023	500 x 0.5	50 x 0.05	110 x 0.1

Accuracy  $\pm 0.5\%$  of full scale

**Note:** The following units are available on the majority of CFG+ models. Those that differ are marked by an asterisk with details given: kN\*, N, mN, kgf, gf\*\*, lbf, ozf

\* Not available on the CFG+ 50N

\*\* Not available on the CFG+ 200N or 500N



DISTRIBUTOR STAMP

**Head Office**  
**Mecmesin Limited**  
 Newton House,  
 Spring Copse Business Park,  
 Slinfold, West Sussex,  
 RH13 0SZ, United Kingdom.  
 e. sales@mecmesin.com  
 t. +44 (0) 1403 799979  
 f. +44 (0) 1403 799975

**North America**  
**Mecmesin Corporation**  
 45921 Maries Road,  
 Suite 120, Sterling  
 Virginia 20166,  
 U.S.A.  
 e. info@mecmesincorp.com  
 t. +1 703 433 9247  
 f. +1 703 444 9860

**Asia**  
**Mecmesin Asia Co. Ltd**  
 9/11 Chaiyo Building, 11th Floor,  
 Room 1106, Rama 9 Road,  
 Huaykwang, Bangkok, 10310,  
 Thailand.  
 e. sales@mecmesinasia.com  
 t. +66 2 247 46 81  
 f. +66 2 247 46 82

**China**  
**Mecmesin (Shanghai) Pte Ltd**  
 Room 302, No. 172,  
 Daxue Lu - University Avenue,  
 Yangpu District, Shanghai, 200433,  
 People's Republic of China.  
 e. sales@mecmesin-china.com  
 t. +86 21 5566 1037 / 3377 1733  
 f. +86 21 5566 1057