

## ETL Suite

**Easy-to-use, cost-effective ETL and Data Transformation solution focused on rapid implementation**

### OVERVIEW

Adeptia Extract, Transform & Load (ETL) Suite is a comprehensive solution that combines data transport with powerful metadata management and data transformation capability. It uses Service-Oriented Architecture (SOA) and a process-based model to create flexible and loosely-coupled data flows that suit any aggregation or data warehousing solutions.

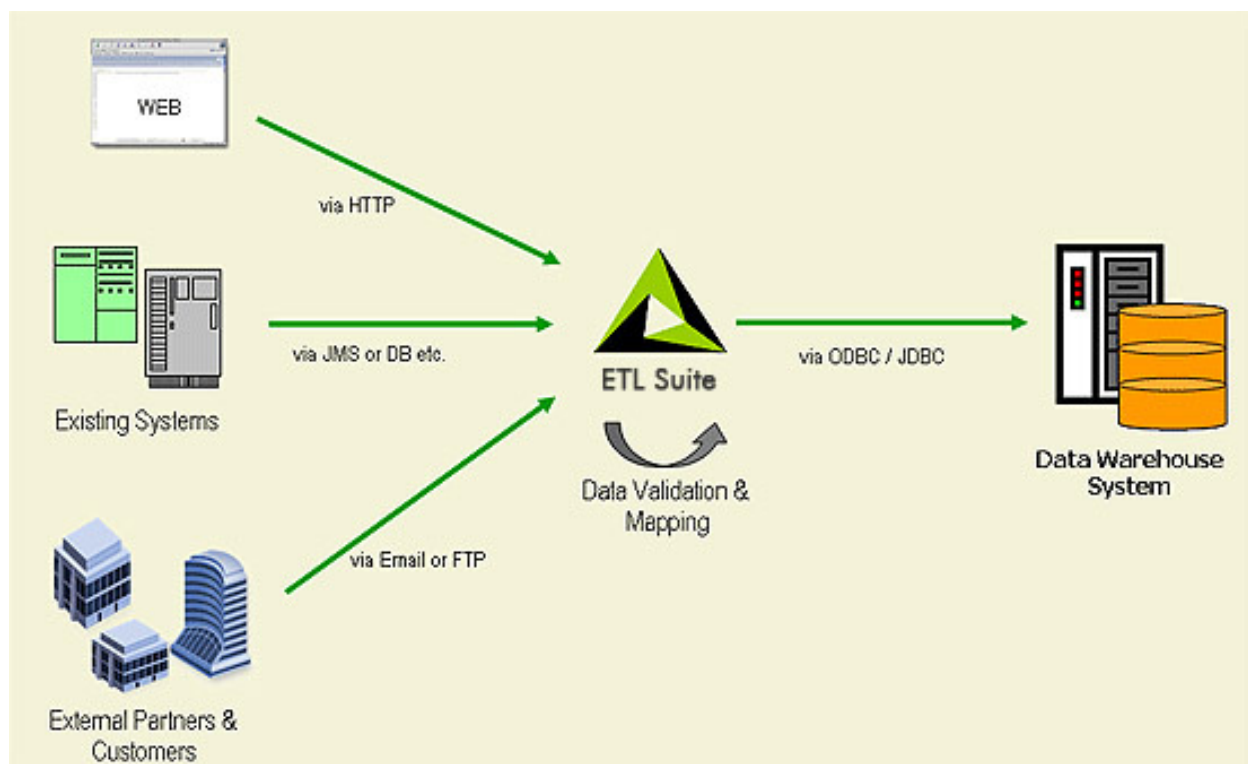
ETL Suite offers a powerful middleware application to document, automate and execute critical data processes especially for creating and populating data marts from various internal or external data sources. This allows data to be received from multiple sources in different formats and mapped to a common database schema. This enterprise-class software allows companies to centrally manage their data schema and mapping rules in a central repository and directly archive those rules in PDF documents for easy sign-off.

### BENEFITS

- Document and formalize data flows and mapping rules
- Enforce data validation rules by specifying them in processes
- Ensure data flows are constant and repetitive, not ad-hoc
- Trigger data flows based on real-time or scheduler events
- Specify error-handling rules and manage exceptions
- Leverage technology investments by extending functionality of existing systems
- Enhance customer and partner relationships by making it easier to do business with your organization

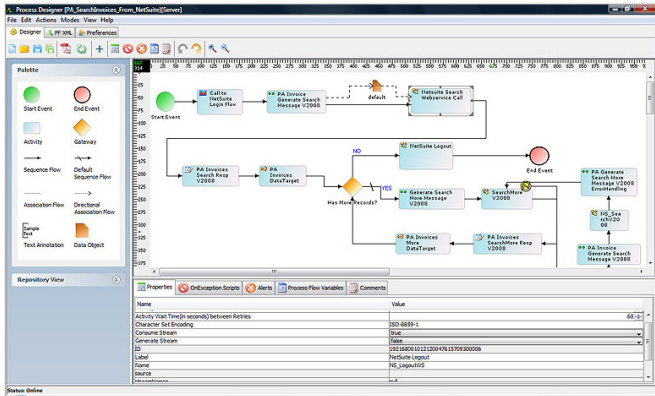
### KEY FEATURES

- Data integration functionality is perfectly suited for Extract Transform and Load (ETL) type of data warehousing solutions for business intelligence, reporting and dashboards
- Process flow based and service oriented approach to data transformation and integration
- Easy to use, intuitive graphical interface to define data mapping and data transformation rules
- Includes both graphical design environment and fully featured run-time engine in one package
- Well suited for data aggregation required to populate data warehouses from various data sources
- Web-based, intuitive interface allows for increased productivity with minimal training
- Object-based architecture promotes reusable components and functionality across disparate custom, packaged and legacy applications
- Complete management, reporting and auditing capabilities to track and monitor transactions
- Fully standards-based solution, using XML and J2EE



## PROCESS DESIGNER

Adeptia ETL Suite (ETLS) offers a graphical process design and modeling interface. It is a simple to use, drag and drop interface for quickly designing data flows and to document business rules. Developers directly implement the flows for execution by creating and populating each service task in the process flow. Process Designer utilizes BPMN standards based notation.



## PROCESS ENGINE

ETLS includes a powerful, full-featured service orchestration engine for automated process execution. Its support for decision nodes, sub-processes, exception handling, forks and joins, allows execution of data flows of almost any complexity. It also supports failure recovery as well as transactional rollbacks for reliability and high performance.

## COLLABORATION ENVIRONMENT

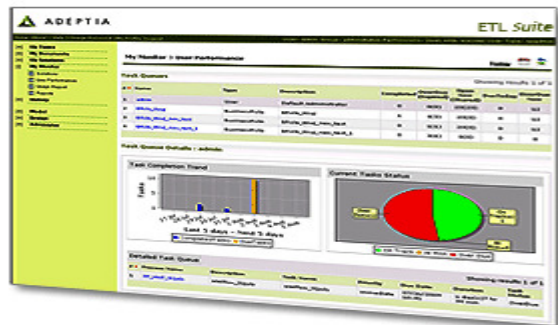
ETL Suite is a completely web-based solution that facilitates collaboration between business analysts, users and IT developers. This Services Oriented Architecture (SOA) based solution increases reusability and reduces implementation time. Users may be assigned different access privileges based on their roles and responsibilities.

## MESSAGE FORMATS AND SCHEMAS

ETL Suite provides a simple and intuitive way to specify the data structure and metadata information for multiple file and message formats. A form-based interface prompts users to specify the record structure and all the field elements including the data types. All the schemas that are defined are saved as reusable activities for ease of use in multiple data flows.

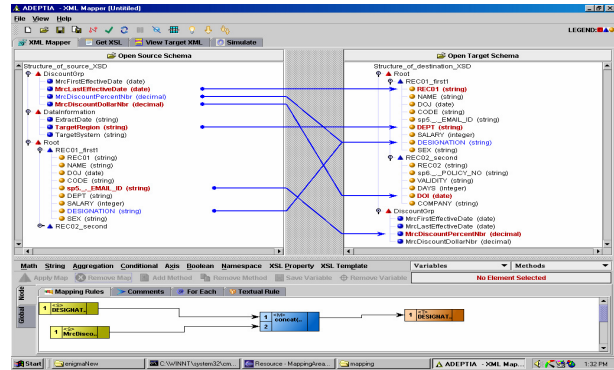
Supported data formats:

- XML-DTD, XSD, Hierarchical, attributes, enumerated values
- ASCII Text/Flat, Fixed-length, HTML, EDI, AL3, Excel files
- All Relational Databases: Oracle, MySQL, SQL Server etc.



## DATA MAPPING AND TRANSFORMATION

The Data Mapping engine in ETLS allows any-to-any transformations between different data formats. Complex data processing functions are included such as string, math, and conditional operations as well as DB and XML file look-up. Mapping rules can be applied from multiple sources to multiple targets irrespective of their data format. So, data can be aggregated from multiple sources. Content can also be distributed to multiple destinations automatically. Simulation ability allows verification before deployment.



## MESSAGE TRANSPORT

Rich, secure, two-way data transport capability gives flexibility to specify different source and destination systems. Supported transport protocols:

- HTTP/S, FTP, SMTP/POP3, JDBC

## TRIGGERS AND POLLING EVENTS

Real-time triggers allow execution of data flows asynchronously based on external events. Scheduler or batch trigger allow execution at fixed times or intervals. Polling events enable waiting for external tasks to complete during execution of the flow. Following events are supported: File Created/Modified, Database, and Scheduler.

## MANAGING BULK DATA

ETL Suite supports handling and processing of very large data files. The schema parser and mapping engine have scalable performance that can scale up to handle hundreds of megabytes of data files that may contain hundreds of thousands of records. This is done in an efficient manner at a speed and throughput that is only matched by dedicated hardware appliance-type of solutions.

## SYSTEM REQUIREMENTS

**Operating Systems:** Windows, Linux, Solaris  
**Database:** Embedded DB included. Commercial RDBMS recommended for production environments.  
**CPU:** Intel® Pentium III 1 GHz or above or compatible  
**RAM:** 1GB minimum, 4GB recommended  
**Java:** J2SE v1.5 SDK

## ABOUT ADEPTIA

For more information, please contact us.

Adeptia Inc.  
443 North Clark Street, Suite 350  
Chicago, Illinois 60654  
312-229-1727 - [sales@adeptia.com](mailto:sales@adeptia.com)  
[www.adeptia.com](http://www.adeptia.com)