



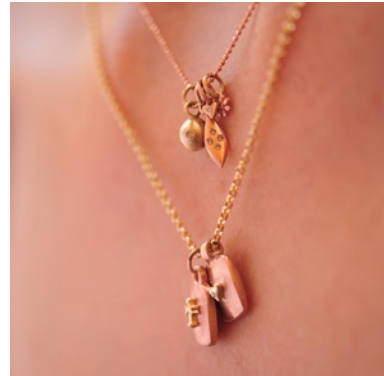
*"For people who love, adore and see beauty."*

For Inquiries, High Res Photos Contact:  
Bonnie Powers  
[bonnie@jeffreylevin.com](mailto:bonnie@jeffreylevin.com)

## **Spring Jewelry From Jeffrey Levin Features Modular Statement Pieces, Refined With a Bit of Edge and Designed to be Layered**

Jewelry collection from designer Jeffrey Levin hones the trend to layer up tiny charms and exquisite rings handcrafted in gold and silver

LOS ANGELES, CA - April 26, 2010 --Jeffrey Levin's jewelry collection features modular and customizable pieces designed to be layered. On trend for Spring, tiny precious [charms](#) stack on a single chain, are mixed with pendants and featured as an accent on dog tags. Varying chain designs and lengths create texture and visual interest. Jeffrey Levin's exquisite ring collection shows layering without clutter using single stone, eternity bands and stacking rings mixed with his bold Mother of Pearl capsule collection.



Customers can choose to layer the tiny heart, flower, shield, traditional or goth cross, iconic ball or tear drop charms in yellow, rose or white gold or sterling silver. Adding the rich adornment of diamonds, any of these items can be embellished with white or cognac diamonds or for some edge, black diamonds.

For [rings](#), the trend has evolved from single statement pieces to multiple rings layered throughout each hand. Jeffrey Levin has created a deep collection of rings which give customers a choice amongst skinny pave diamond eternity bands, single stone stacking rings and large rose gold bands meant to be layered on a single finger or across the hand. A statement piece from Jeffrey's new mother of pearl collection is stunning next to a thick gold or black diamond-set sterling silver stacking ring.

True to his artisan roots, the Jeffrey Levin collections are crafted by hand, using the ancient lost-wax process. Jeffrey blends newer techniques with time-honored practices in order to optimize the beauty of his medium. His unique "handwriting" comes through in each piece that he carves. The subtle or remarkable details are created within a frame of reference of mere millimeters, through to the finish which is a worked method applied to each individual piece.

"I design classic pieces which can be worn everyday, mixed with bold statement pieces that reflect a woman's joy of collecting objects of artistic appreciation," says designer Jeffrey Levin. "I create for people who love, adore and see beauty."

With an eye on a recovering economy, Los Angeles based Jeffrey Levin has captured high-end design, with more affordable value and a sustainable approach. His sought-after collection is available on-line or by appointment at <http://jeffreylevin.com/>

[About Jeffrey Levin](#) - Jeffrey Levin is the eponymous jewelry collection created and crafted by the artist, an accomplished jeweler and designer of over 30 years. Originally from South Africa, he references his exotic heritage and rich life experiences in his unique oeuvre of sublime, statement jewelry.

Treat yourself.

All images, logo and product copyright Jeffrey Levin 1986-2010. All rights reserved.

###