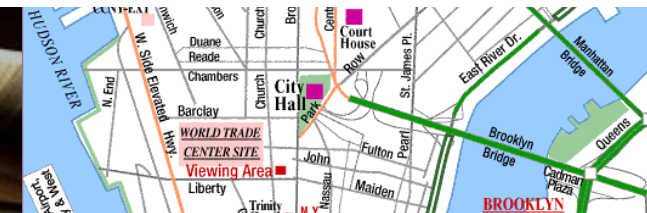


Haptik

luxury redefined
effortless **sustainability**

hap•tic /'hap-tik/ *adj* [from Greek *haptesthai* to touch]:
experiential interactions based on sense of touch

Haptik offers a multi-sensory lifestyle based on luxurious sustainability. The ethos is choreographed around individual moments that stimulate and inspire



arrive >>

You've reached your destination - it's time to relax and unwind at your personal, customized haven.

dine & enjoy >>

Dining experiences at Haptik inspire guests to adopt new eating behaviors that are sustainable, healthy, and delicious.

bathe >>

The sybaritic bathing experience at Haptik subtly reinforces a connection to natural cycles.

into the city >>

Haptik creates an immersive urban experience - with customized PDA tour guides and free bicycles - that plugs you into the local culture.

sleep >>

Your room is your refuge: a dreamy bed dressed in natural materials feels like a reward richly deserved after a long day of work and play. After all, sleep is the cornerstone of health and wellness.

arrive

You've reached your destination—it's time to relax and unwind. Fresh breezes are filtered by fragrant herbs and linen curtains at the greenery-swathed outdoor lounge.

PASSIVE DESIGN

- Lighting levels and temperature have been pre-set to specified preferences, provided before check-in.
- The Nana Wall to the outdoor lounge folds away to welcome fresh air and breezes, and for an unobstructed view.
- Shading over the outdoor lounge is designed to keep the room cool in warmer months and bring in the sun to warm the space in the winter.



THURSDAY
EVENING



ANTICIPATION Your room is tuned to your preferences—specified via a Haptik email inquiry a few days ago. Lighting, temperature, and amenities are just so, and the luxury of customization conserves energy for the hotel.



WELCOME A “locals” gift bag—with maps, restaurant and shopping guides, and a reusable water bottle—welcomes you to your room. Packed in a locally-designed canvas bag, it's a grab-and-go way to connect to the neighborhood and city—culturally and economically.



DISCOVERY At turn-down a piece of seasonal, organic fruit is accompanied by a welcome note that details its local provenance. A reusable bottle of Natura water offers purified, easily refillable water from the tap.



SETTLE It's time to settle in and unwind.



dine & enjoy

The room is part of a larger ecosystem—of food, services, and energy. At Haptik, each luxurious amenity is an opportunity to “plug in” to sustainable practices, from gastronomy inspired by local purveyors to rooftop PVs.



ENERGY & ATMOSPHERE

- Energy-efficient LEDs give the space maximum customizability in terms of hue and level, and reduce the lighting power density
- An intelligent, programmable thermostat controls the temperature of the room

FRIDAY
EVENING

SURPRISE! You return to the room after a long day of business meetings to find your significant other is just settling in to join you for a quick escape weekend at Haptik.



DINE Exhausted after a full day of work and travel, you dine in-room. The Haptik culinary program features fresh farm-to-table ingredients. Haptik’s menu selections—founded on a deep understanding of gastronomy and the role food plays in the ecosystem—constantly evolve.



TAKE-AWAY More than just a memorable meal, dining experiences at Haptik inspire new eating behaviors that are sustainable, healthy, and delicious. Recipes allow you take culinary inspiration and sustainable tips home.



DECOR Informative labels on unique furnishings—many vintage or made of reclaimed materials—tell their stories, secrets and where to find them for yourself.



bathe

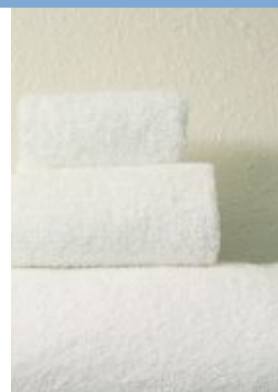
Celebrate water...a luxurious shower bridges indoors and out. Water used for showers also maintains the adjacent herbs—that in turn scent the room.



WATER EFFICIENCY

- A luxurious but low-flow shower head uses 1.75 gallons per minute.
- A low-flow faucet uses 1.0 gpm.
- An automatic sensor on the faucet is self-charging.
- The quiet toilet uses pressure-lite technology and 1.0 gallons per flush.
- A trombe water wall in the shower uses solar energy to preheat shower water and reduce energy consumption.

SATURDAY
MORNING



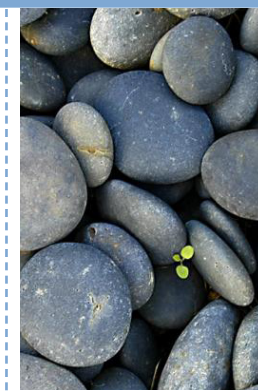
AWAKE It's time for an invigorating start to the day. Luxurious, in-room bathing areas—with a garden view—offer all the pampering amenities of a spa.



BEHOLD Easy, intuitive design moments show that every detail has been carefully considered. A quick glance in the mirror reveals typography that reads "You look marvelous, our energy-efficient LED lights really highlight your inner beauty."



REQUISITE Amenity and toiletry selections are all locally sourced and hand-crafted. Elegant bulk dispensers minimize waste, but don't compromise on quantity, quality, or scent.



STEP OUT The personal pampering experience isn't limited to the room: the outdoor garden is lined with river rocks to massage the feet and imagination.



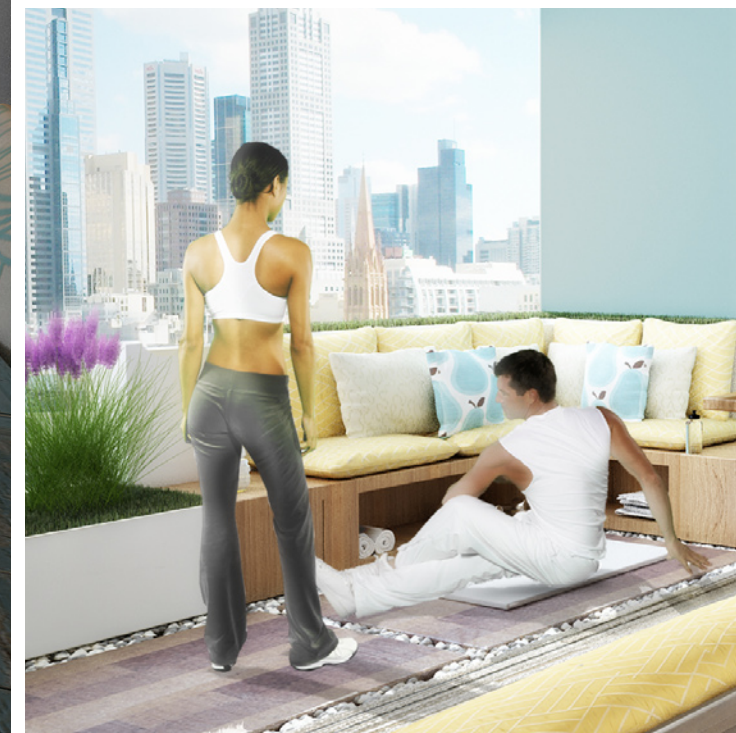
into the city

The furnishings embrace repurposed materials and local vendors, providing a strong connection to the local community, economy, and ecosystem.



MATERIALS & RESOURCES

- Under the desk, guests find tailored recycling bins.
- The wood floor is warm to the touch—and is forest stewardship-certified and stained with natural dyes.
- The beautifully knitted rug is created from recycled wool felt. Upholstered furniture is naturally dyed and chemical-free.
- Contemporary art celebrates local artisans.
- A flexible seating area promotes wellness by allowing guests to unwind and recharge through the use of in-room yoga amenities.



SATURDAY
AFTERNOON



EXPLORE You're off to explore the city and discover its secrets. Haptik provides free transportation options—the room key, for instance, doubles as a train and bus pass.



REFRESH Housekeeping styles the room for their return with fresh fruit and flowers, artisanal cheese, and wine. All "room refreshment" (i.e. cleaning) uses green products.



NAVIGATE You take in sights and sounds of the city with the aid of a customized Haptik PDA tour guide and a map of green hot-spots, created by expert locals in-the-know about sustainability.



FIT Bicycles are freely available in the hotel lobby, or indulge in yoga on your private garden terrace—on mats that read "Pray for sun: Haptik is powered by solar energy (even when its overcast)."



sleep

Luxurious natural bedding and materials as well as plentiful natural ventilation offer restful sleep.

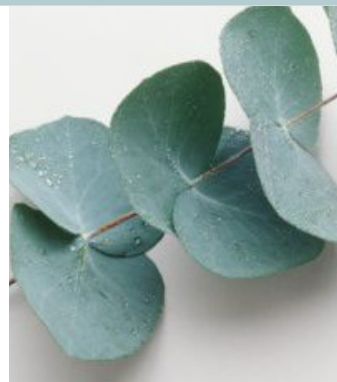


INDOOR ENVIRONMENTAL QUALITY

- The mattress features recycled steel springs and soy foam.
- Zero VOC paint are used to reduce contaminants.
- All furniture uses low VOC adhesives are used in furniture to reduce contaminants.
- Natural eucalyptus sheets offer a luxurious touch and exceptional breathability.

SATURDAY
EVENING

RETIRE You return from a day of rich and rather lengthy excursions, ready to retire for the night.



RELAX Eucalyptus sheets are mildly fragrant and soporific—known to induce restful sleep. The pre-arrival personalization of sleep amenities (pillows, etc.) reduces unused linens.



TEASE Eucalyptus or hypo-allergenic pillows (based on your advance preference) rest atop the bed.

An embroidered axiom on the pillowcase welcomes you to bed: "Love just gets more physical on eucalyptus sheets. Isn't sustainability sexy?"



GLOW A variety of customizable lighting scenes set the mood for reading, romance, relaxation, or sleep.



check-out

behind the scenes



EDUCATION + PERSONAL WELLNESS

- Guests are contacted prior to arrival with options to customize their stay, and subtly share environmental practices (public transportation, preset room temperature, etc).
- Subtle nudges are included in the guestroom design to help educate the guest without forcing it upon them.
- Guests have many in-room options that contribute to efficient sustainable practices including the number of towels.
- Instead of an in-room coffee machine and mini bar, a coffee bar and fresh baked good and produce bar can be found on every floor.
- Guests receive Haptik Green Points which can be used at any other property and/or participating local businesses.
- Flexible seating area promotes wellness by allowing guests to unwind and recharge outdoors.
- Guestrooms feature tailored recycling containers.
- The trombe wall features a water level indicator that illustrates personal water consumption.
- Zines are provided with room service that outline specific fresh ingredients, their respective nutritional benefits and recommendations for healthy eating.
- The outdoor garden is the perfect setting for stretching and yoga; fitness accessories, including a yoga mat, elastic bands and free weights are featured in a cubby beneath the outside couch.
- Guest folios feature a scorecard of conservation and environmentally-responsible practices.
- Haptik Bike Valet loans guests complimentary bicycles.
- The guestroom key provides complimentary bus and train fares in the local community.



ENERGY + ATMOSPHERE

- Guestroom design embraces significant outdoor space, reducing the building footprint and thereby conserving resources and energy.
- The room is conditioned by a four-pipe horizontal fan-coil system.
- An intelligent programmable thermostat controls the temperature of the room. If the room is not "rented," the thermostat is setback approximately 5°F to conserve energy. Anticipated arrival and the guest registration process adjusts the thermostat to the guest's requested temperature. If the rented room becomes unoccupied, passive infrared sensors (PIS) and the door switch set the thermostat back a few degrees to conserve energy.
- Intelligent thermostat and switch shuts down the fan coil unit if the Nana Wall is opened.
- The room is lit utilizing efficient LED lighting, thereby reducing the lighting power density.
- Intelligent lighting controls provide energy-efficient lighting scenes with lights dimmed to appropriate levels.
- A convenient "all-off" switch ensure that lights are automatically turned off based on passive infrared sensors (PIS) and the door switch.
- The energy efficient central plant consists of air-cooled chillers, domestic hot water reheats, condensing-style boilers, and solar hot water.
- Electricity for the hotel is supplemented by photovoltaic rooftop panels.
- Trombe wall in the shower captures solar heat to warm shower water.
- Lighting and thermal controls allow the guest to control the comfort of the room.
- The flatscreen television is Energy Star-rated.
- Power density exceeds ASHRAE Standard 90.1.2004



INDOOR AIR QUALITY

- Nana Wall provides a visual and physical connection to the outdoors and provides daylighting to lower energy use from artificial lighting.
- Zero VOC paint is used to reduce the negative effects of indoor contaminants.
- Low VOC adhesives used in furniture reduce the negative effects of indoor contaminants.



WATER EFFICIENCY

- Low flow shower head uses 1.75 gpm (gallons per minute) in comparison to 2.5 gpm from Baseline per EPA of 1992.
- Low flow faucet uses 1.0 gpm in comparison to 2.2 gpm from Baseline per EPA of 1992.
- Automatic sensors on sink faucets are self charging.
- Toilet with pressure-lite technology and 1.0 gpf (gallons per flush) in comparison to 1.6 gpf from Baseline per EPA of 1992.
- Water from shower is recycled to irrigate outdoor garden and landscape.



MATERIALS + RESOURCES

- Bulk shower dispensers reduce plastic waste.
- Natura water purification system provides filters that offer still or sparkling water and refillable glass bottle, eliminating waste from plastic water bottles.
- Forest stewardship-certified (FSC) wood floors stained with natural dyes.
- Sustainable textiles made with natural fibers and recycled fabrics that are GreenGuard certified
- Recycled wool felt rug.
- Bed linens, duvet and towels are made from eucalyptus, a renewable resource.
- Organic cotton blankets.
- Mattress is made with recycled steel springs and soy foam.
- The outdoor garden features cork flooring and river rocks.
- Rooms are cleaned and maintained using organic, green products.
- The credenza is repurposed from an old door.
- Feature lamp is repurposed from recycled water bottles.
- Guestroom folios are provided electronically, conserving paper.
- Vanity counter is designed with 3form, made from recycled milk cartons
- Water closet and shower enclosures are designed with recycled resin manufactured by 3form
- Bathroom feature walls are designed with Miami Beach Pebbles, which are gathered by hand to not harm the environment with machinery and are an environmental-friendly alternative to quarried stone.

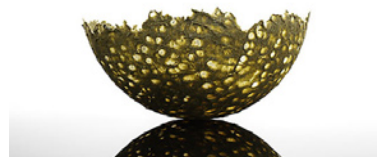


COMMUNITY

- The exterior living area and rooftop garden increase biodiversity.
- Artwork throughout the property showcases local artisans.
- The community pantries on each floor feature free-trade coffee, organic fruit from local farms, artisan pastries from local bakeries and a selection of newspapers. The pantries help conserve energy and reduce waste by eliminating mini bars, in-room coffee makers and newspaper delivery to each guestroom.
- The property's culinary program features fresh farm to table ingredients, including organic produce and local vendors.

SUNDAY
MORNING

Guests can purchase sustainable furnishings and local artwork featured in the property's on-line retail shop



Guest folios are sent electronically to conserve paper. The folio also features a scorecard of the guests' conservation and environmentally-responsible practices



Guests earn Haptik Green Points for future stays based on their personal conservation

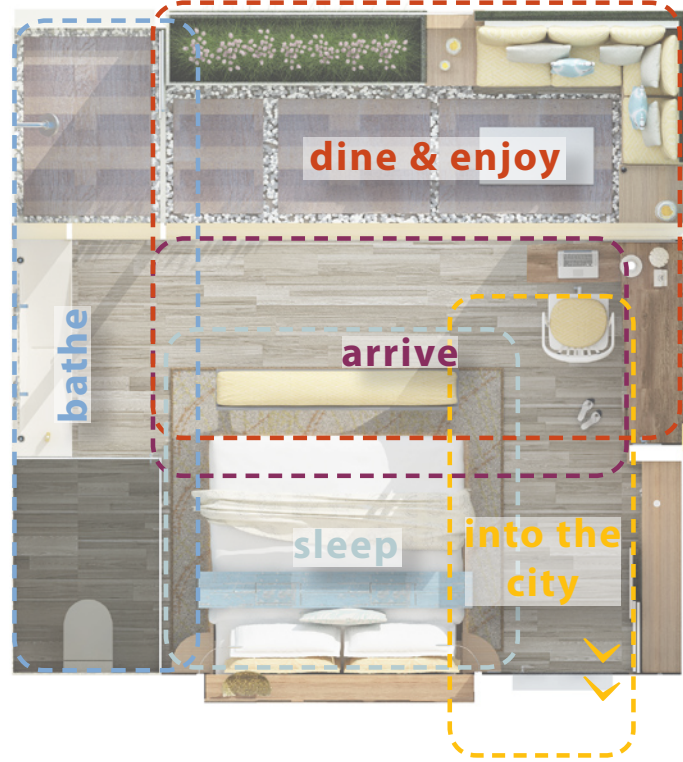


Our enlightened guests text their friends about their "green stay" and decide to renovate their home to mirror the green practices they have learned on weekend getaway.

plans

behind the scenes

zones



seamless environment



OUTDOOR SPACE

The guestroom embraces the outdoors, with 1/3 of the total floor plan "giving back" to the community, allowing for less conditioned space

INDOOR SPACE

