

Press Release

For More Information Contact:

Michael Gauvin
VP Sales & Marketing
Lambda Research Corporation
25 Porter Road
Littleton, MA 01460
Phone: 978-486-0766 Ext. 11
Fax: 978-486-0755
Email: sales@lambdares.com



Lambda Research Corporation Announces the updated TracePro® Bridge™ for Solidworks® 2009 and 2010.

Littleton, Massachusetts, May 19, 2010 – Lambda Research Corporation, developer of the two optical software programs TracePro and OSLO®, announces the release of their updated TracePro Bridge compatible with SolidWorks 2009 and 2010. The TracePro Bridge™ is an Add-in to Solidworks that enables users to assign, view and save optical properties directly in their Solidworks model, including source, material and surface definitions. These complete opto-mechanical models are subsequently easily exported to TracePro ready for optical design, ray tracing and analysis.

TracePro is a 3D solid-based CAD program used to design and analyze optical, lighting and illumination systems. The program’s capabilities span multiple markets including lighting, biomedical, consumer electronics, automotive, display, aerospace, defense and energy & power. Some of the applications for the TracePro Bridge include lighting, backlighting, lightpipes, projector design, and stray light analysis of optical assemblies.

The ability to create complete opto-mechanical models within SolidWorks and retain optical properties during modifications drastically reduces design iteration time. “The TracePro Bridge provides the link to analyze the effects of light on sophisticated mechanical structures created in SolidWorks,” said Rich Hassler, executive VP at Lambda Research Corporation. “The Bridge allows engineers to utilize the geometric modeling capabilities of SolidWorks and the powerful ray tracing of TracePro in a synergistic way. Engineers can explore larger design spaces more quickly with the coupling of these two powerful software tools.”

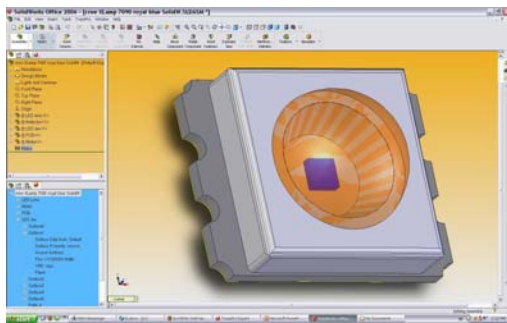


Figure 1 - Mechanically accurate models with complex geometry including optical properties are built in SolidWorks

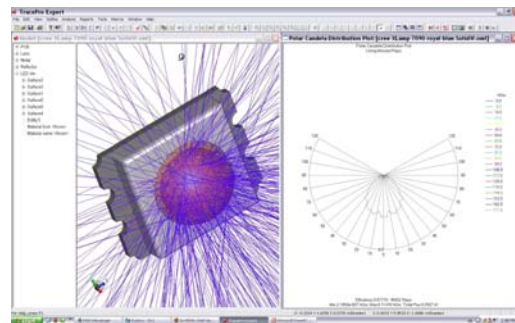


Figure 2 - TracePro OML files created in SolidWorks are ray traced directly in TracePro without need for a translator or healing husk

--- more ---

Based in Littleton, Mass., Lambda Research Corporation was founded in 1992 and is a privately held company. Lambda is an industry leader in stray light analysis, illumination system design and analysis, and custom software development. Lambda Research publishes TracePro software for optomechanical modeling and OSLO software for optical design. The company's mission statement is to establish a technology bridge between optical engineers and mechanical engineers by providing state-of-the-art optomechanical design and analysis software, services and technical support to the optics industry worldwide. For more information, please visit the company's web site at www.lambdares.com.

###