

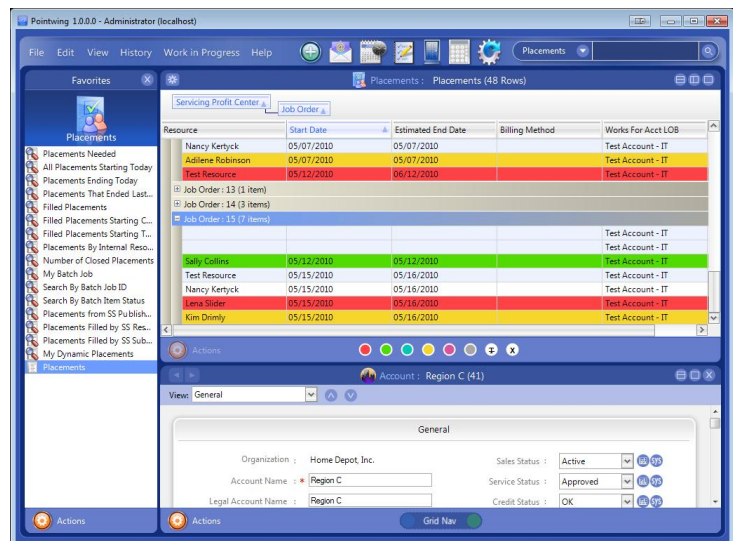


## VCG's Pointwing® Recruiting Software Offers Easy Data Export to Microsoft Excel.

*Recruiters, staffing coordinators and managers can simply export data directly from Pointwing into Microsoft Excel for additional analysis and other uses.*

Atlanta, GA, June 8, 2010. Busy recruiters, staffing coordinators and their managers often have the need to create reports or presentations on the fly for specific purposes. Now, ad hoc reports or presentations like these are even easier to create in the latest release of VCG's [Pointwing recruiting software](#) as end-users can export chosen data directly into Microsoft Excel.

The data export process is simple. First, Pointwing end users perform a search query. The query results are instantly displayed on screen in a customizable grid format. The end user can group, sort and arrange the grid view to suit their needs. The grid can also include custom highlighting to help differentiate rows of data (as shown in the screen shot at right). When the end user is satisfied with the grid's customization, they can view, print or export all grid data to Microsoft Excel, retaining all of the formatting and highlighting used within the grid. Additionally, the end user can use filters to export a particular subset of the data from the grid. Once the data is in Excel, the end user can further manipulate and analyze it.



Steve Taylor, President and CEO of VCG, said “Pointwing now provides end users in a recruiting or staffing firm a quick, easy way to get and export specific data to create reports or presentations for others that require additional analysis that is only possible in a spreadsheet application such as Excel.”

### *About Pointwing*

Pointwing® is a modular recruiting software suite that accelerates the process of finding and placing the people most likely to thrive and streamlines unique business processes to improve productivity, control costs and manage margins. Modules available include:



- **Pointwing Front Office** – the core recruiting software module that accelerates recruiting and sales by integrating account and candidate/employee management, Smart Match semantic resume search engine, Job Publisher job board posting, Resume Sourcer search spider, job placement, two-way Microsoft Outlook integration and more.
- **Pointwing Self Service** – a Web portal module that connects the Pointwing Front Office module to your Web site in real-time, enabling you to post jobs and resources/candidates to search for jobs, register and/or update their profile, upload their resume and apply for jobs.
- **Pointwing Software Kit** – a module which gives you access to Pointwing's open API to create custom applications that integrate with Pointwing or integrate Pointwing with virtually any third-party application.

Pointwing is easily deployed in the manner best suited to your firms' recruiting business operational needs: On-demand [software as a service \(SaaS\)](#) subscription; managed services (licensed software with VCG-hosting); or enterprise (licensed software with self-hosting).

Click here for [Pointwing Online Demos](#). For more information about Pointwing or to register for an online Webinar demo, visit [www.pointwing.com](http://www.pointwing.com) or call 800-318-4983.

#### *About VCG*

VCG provides comprehensive staffing and recruiting solutions that power success. Since 1976, VCG has helped hundreds of companies worldwide achieve operational excellence by streamlining their unique business processes and accelerating finding and placing the people most likely to thrive. VCG and Pointwing are registered trademarks of VCG, LLC. For more information visit: [www.vcgsoftware.com](http://www.vcgsoftware.com) or call 1.800.318.4983.

###