



## PST FINDER

The Fortisware PST Finder is an IT-Pro tool for locating .PST files on a local network and enabling automated removal, archiving and import to Microsoft Exchange Server.

Rich reporting features make it easy to look for recently-modified PST files on the network and to monitor the status of automated imports. Determine the size of PST files on an individual and domain level for planning purposes; aggregate size data can be used to establish centralized storage needs or Exchange mailbox capacity.

Take control of PST creation through policy-level controls: PST Finder can also adjust users' Outlook settings to disable the generation of new PST files in the future on an individual workstation or domain level.

### LOCATING PST FILES

The IT Professional selects the computers to scan from AD.

PST Finder then collects and saves data regarding the found PST files:

- Location where the PST was found
- Date Created
- Date Modified
- PST owner
- Associated Exchange Server
- Whether PST is compressed

A rich user-interface allows real-time monitoring of the scanning process.

### REPORTING RESULTS

- View all computers with multiple PST files.
- View details of PST files found in a scan.
- View log details and error reports.
- Query for PST files modified within specified ranges:
  - More than 1 year ago
  - Within 1 year
  - Within 6 months
  - Within 90 days
  - Within 60 days
  - Within 30 days

Users also have the ability to add new reports.

## CENTRALIZING PST FILES

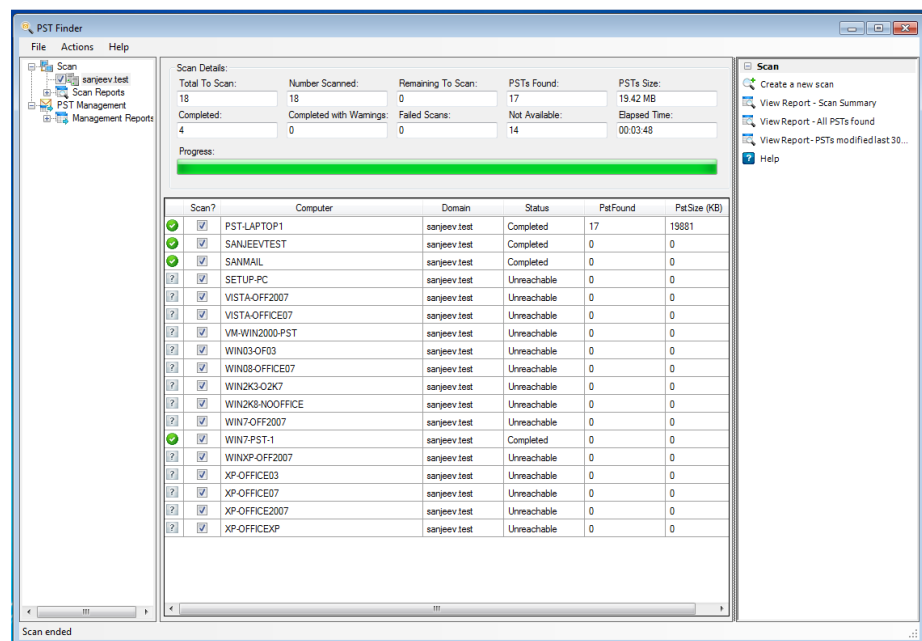
- Select PST files to move to a centralized location using pre-defined queries.
- Configure option to disconnect the PST files from Outlook after copy/move and disable the creation of new PST files.
- The application enables multithreaded centralized processing with configurable throttling.

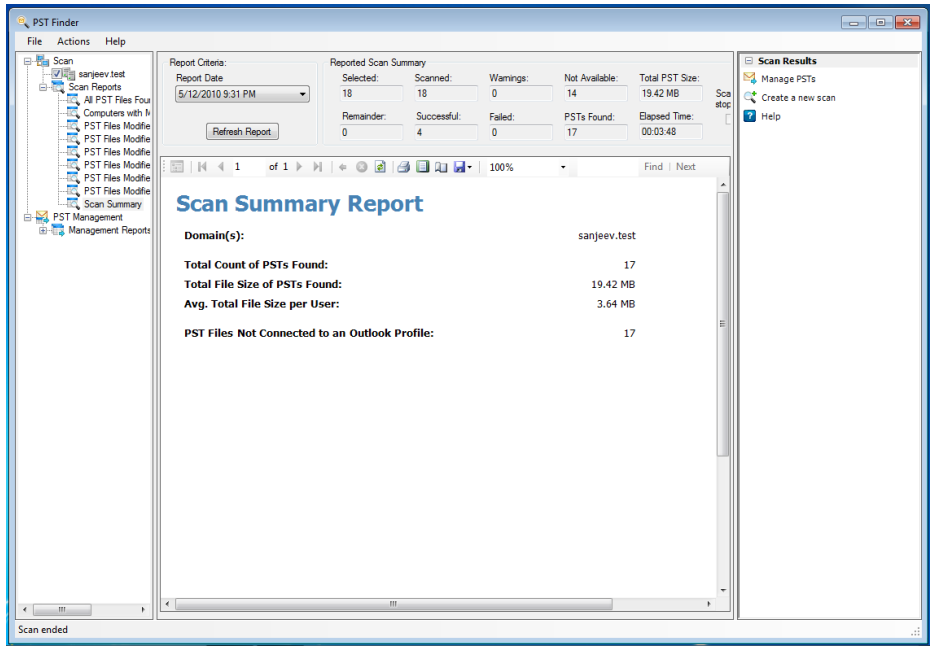
## IMPORTING TO EXCHANGE SERVER

- Select the PST files to import into Microsoft Exchange Server using Exchange tools/APIs.
- Provides configurable username mapping based on mail profile account or file owner.
- Configure options to back up or delete original PSTs on import.
- The application enables multithreaded import processing with configurable throttling.

## 4 EASY STEPS

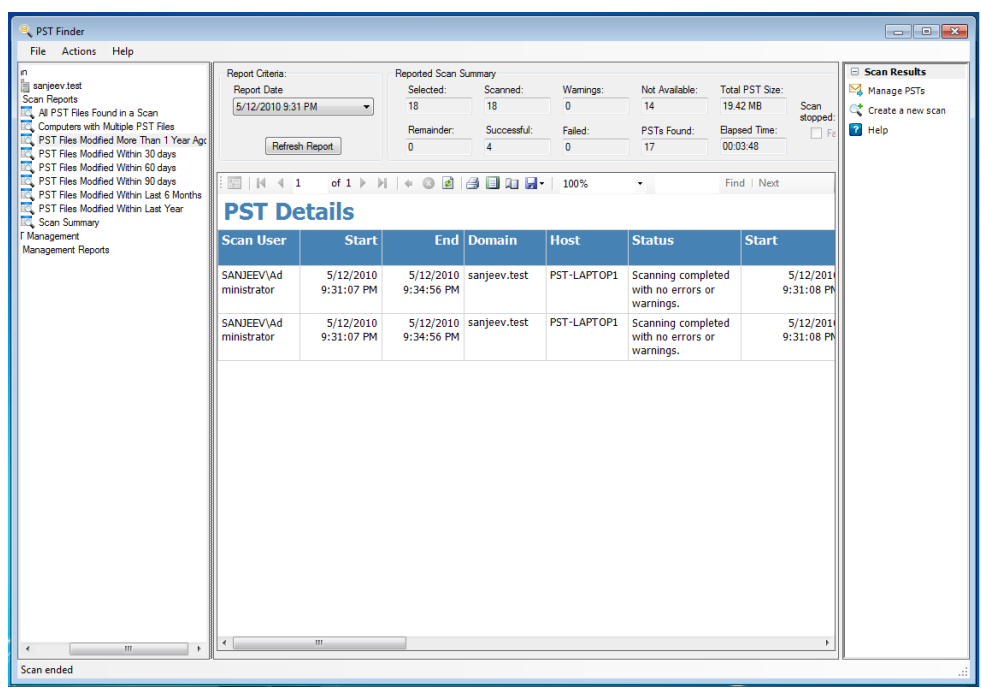
1. PST Finder scans your network for PST files, helping you find unmanaged emails.

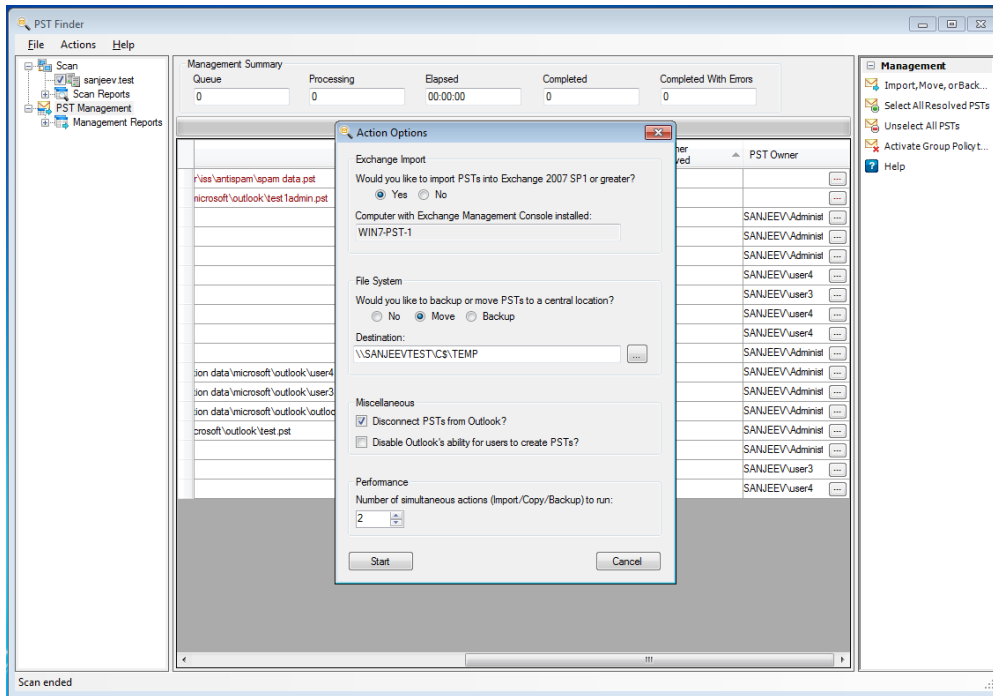




2. PST Finder shows you the PST files found in your local network.

3. Filter your scan results to recently-used PST files.





4. Manage your PSTs by backing them up, or importing them into Exchange mailboxes.

## REQUEST MORE INFORMATION

For more information, contact software sales at [sales@fortisware.com](mailto:sales@fortisware.com) or go to [www.fortisware.com](http://www.fortisware.com).