



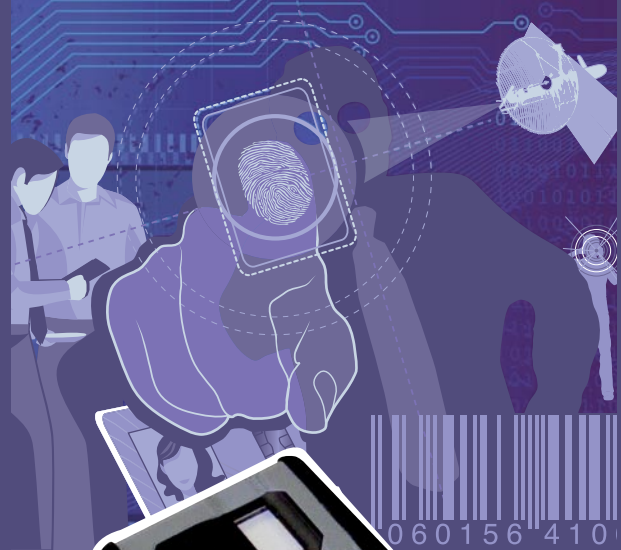
Designed for purpose, built to last.

# iDL300



## Compact Rugged Biometric Computer

- Compact and lightweight design
- Read all contactless identity documents
- Verify identity using multi-modal biometrics in one mobile unit
- Connect using integrated 3G, WiFi and Bluetooth links



The iDL300 compact rugged biometric computer offers a complete set of features for virtually any identity management challenge in a remarkably small and lightweight form factor.

On-board contactless card, barcode, and optical fingerprint readers combined with a digital camera and comprehensive wireless communications provides an effective, connected biometric solution set in the palm of your hand.

Weighing only 1lb (450g) the iDL300 integrates features for most identity management applications. Contactless card reading capabilities are provided by an iClass®-compatible contactless reader, while additional security capabilities are built into the iDL300 with 2 SAM slots, one of which is user-accessible without even removing the battery. An optional OCR/MRZ accessory allows the operator additionally to screen passports, drivers' license and other documents. The latest digital camera technology offers fast acquisition of FIPS-201 compliant facial images even under low-light levels. Additionally, for those seeking contact card reading capability, a factory-installed accessory is available so that most PIV/TWIC/CAC applications can be supported.

The iDL300 is the first biometric mobile computer to incorporate 3G wireless capabilities as standard, providing up to 7.2mb/s data transfer speeds. This powerful WAN connectivity is supplemented by WiFi and Bluetooth communications. Running Microsoft® Windows CE .NET 6.0, the iDL300 offers an open, flexible platform. It is supplied with a comprehensive Software Development Kit to enable fast and easy application



development, while MaxID also has a comprehensive range of identity management software applications specially designed to work with the iDL300.

Although the iDL300 is so compact, the high-impact ABS plastic case is shock tested to survive repeated drops of more than three feet to concrete and is designed to withstand ingress of water and dust. At only 5.9" by 3.1" by 1.4" (150mm by 80mm by 35mm), the unit's compact size makes it very easy to carry and still allows for a 3.7" color TFT LCD display at 640x480 resolution that is readable in sunlight. With a built-in accelerometer, applications can support both portrait and landscape perspectives. The high capacity Lithium-Ion battery is hot swappable and easily changed to allow continuity of operation during periods of intensive or extended use.

## Specification Highlights

### Core:

Processor	PXA270 @ 520MHz
RAM	128 MB
Flash	1GB
Additional Memory	1 GB, user replaceable micro-SD card (larger cards available)
Operating System	Microsoft Windows CE.NET 6.0

### Peripherals:

Fingerprint Reader	Optical 500DPI, FIPS 201 approved, 0.55" x 0.87" (14mm x 22mm) active area
Contactless Smart Card Reader	ISO 14443a/b proximity and ISO 15693 vicinity card reader
Barcode Reader	Imager capable of decoding all common 1D & 2D barcodes
Camera	1.3M pixel color, FIPS compliant, optimized for facial image capture
OCR (MRZ) Reader	Decodes passports, visas, and OCRB encoded cards such as the US Resident Alien card and national ID cards (optional accessory)
Security	Two SAM sockets

### User Interface:

Display	3.7" (9.4cm), portrait format, 65K color, 640 x 480, active TFT, backlit, touch screen
Keyboard	Soft keyboard – touch screen based. 2 x scan button, 1 x On/Off
Sound	1W speaker

### Communications:

WWAN	Tri-band UMTS/HSDPA, quad-band GSM/GPRS/EDGE
WLAN	802.11 b/g WiFi
PAN	Class 2 Bluetooth 2.0 / 2.1 + EDR
USB	USB Full Speed, Host / Slave

### Power:

Battery	2100 mAh Lithium-Ion, fuel gauge
Backup Battery	Hot-swap supported via internal super-capacitor

### Physical:

Weight	1lb (450g)
Dimensions (LxWxH)	5.9" x 3.1" x 1.4" (150mm x 80mm x 35mm)

### Environmental:

Operating Temp	-10° to 55° C
Storage Temp	-20° to 65° C
Humidity	10% to 90% RH, non-condensing
Drop Durability	Six repeated 1.2m drops onto concrete
Sealing	IP65
Electrostatic Discharge	+/- 8kV DC (contact discharge, direct / indirect), +/-15kV DC (air discharge)

### Regulatory:

North America, Europe, Asia

### Included Accessories:

12V 3A universal a/c adapter, mains cable, USB cable, battery & manual. SDK on request

### Optional Accessories:

OCR (MRZ) reader, stand-alone battery charger, additional batteries

### US Offices

4445 Corporation Lane  
2nd floor  
Virginia Beach, VA  
23462  
USA  
Tel: (888) MAX-ID01  
Tel: (757) 213-6863

6601 Owens Drive  
Suite 145  
Pleasanton, CA  
94588  
USA  
Tel: (888) MAX-ID01  
Tel: (925) 468-0109

[info@maxid.net](mailto:info@maxid.net)  
[www.maxid.net](http://www.maxid.net)

All product and company names are trademarks, service marks or registered trademarks of their respective owners.

Specifications are subject to change without notice. \*All trademarks are acknowledged. MaxID has endeavoured to ensure that all information in this document is correct and fairly stated but does not accept liability for any errors or omissions. The development of MaxID products is continuous and published information may not be up to date. It is important to check the current position with MaxID or your local representative. This document is not part of a contract or licence save in so far as may be expressly agreed.

