



*Mill2Market*<sup>SM</sup>  
*a product of Forest2Market*<sup>®</sup>

**Mill Realization by Region**  
**For the Week of: 07/15/10 to 07/21/10**

**Mill Realization by Region: U.S. South**  
**Mill Realization Report: From: 07/15/10 To: 07/21/10**  
**Kiln Dried Lumber**

Gross Prices - U.S. Dollars Per Thousand Board Feet

	8'	10'	12'	14'	16'	18'	20'	RL
<b>Southern Yellow Pine: #1</b>								
<b>2X4</b>	289	252	274	269	313	--	--	297
<b>2X6</b>	276	286	285	266	275	--	--	263
<b>2X8</b>	316	319	309	297	286	--	--	298
<b>Southern Yellow Pine: #2</b>								
<b>2X4</b>	225	244	234	240	256	247	269	252
<b>2X6</b>	221	240	246	241	239	235	264	247
<b>2X8</b>	251	249	254	257	272	278	278	265
<b>2X10</b>	253	262	257	269	259	246	265	252
<b>2X12</b>	296	271	312	278	270	249	301	301
<b>Southern Yellow Pine: #3</b>								
<b>2X4</b>	209	215	215	222	223	--	--	215
<b>2X6</b>	197	216	212	217	208	--	--	201
<b>2X8</b>	206	205	209	205	224	--	--	215
<b>2X10</b>	--	--	--	--	--	--	--	174
<b>2X12</b>	--	--	--	--	--	--	--	--
<b>Southern Yellow Pine: #4</b>								
<b>2X4</b>	174	175	--	--	--	--	--	176
<b>2X6</b>	167	178	176	--	--	--	--	179
<b>2X8</b>	--	--	--	--	--	--	--	176
<b>2X10</b>	--	--	--	--	--	--	--	177
<b>2X12</b>	--	--	--	--	--	--	--	176

**Mill Realization by Region: U.S. South**  
**Mill Realization Report: From: 07/15/10 To: 07/21/10**  
**Kiln Dried Lumber**

Gross Prices - U.S. Dollars Per Thousand Board Feet

	Weekly Price	Weekly Price Change	Weekly Volume Change	Market Price Variation	Mid-Week Price Trend	Mid-Week Volume Trend
<b>Southern Yellow Pine: #1</b>						
<b>2X4</b>						
8	289	-22	▼	++++	▼	▲
10	252	-21	▼	+	▼	▲
12	274	-18	▼	+++	▼	▲
14	269	-7	▼	+++	▲	▲
16	313	-18	▼	+	▲	▲
<b>2X6</b>						
8	276	5	▼	++++	▼	▲
10	286	12	▼	++++	▲	▼
12	285	-3	▲	+++	▲	▲
14	266	-5	▼	++++	▼	▲
16	275	-2	▼	++++	▼	▲
<b>2X8</b>						
8	316	6	▲	++	▲	▼
10	319	10	▼	+++	▲	▼
12	309	1	▼	++	▲	▲
14	297	-4	▼	++	▲	▼
16	286	0	▼	++	▼	▼

- ▲ - Significant increase
- ▲ - Increase
- ◄ - No change
- ▼ - Decrease
- ▼ - Significant decrease

- '+' - Little to no market price variation
- '++' - Mild market price variation
- '+++'
- '++++'

**Mill Realization by Region: U.S. South**  
**Mill Realization Report: From: 07/15/10 To: 07/21/10**  
**Kiln Dried Lumber**

Gross Prices - U.S. Dollars Per Thousand Board Feet

	Weekly Price	Weekly Price Change	Weekly Volume Change	Market Price Variation	Mid-Week Price Trend	Mid-Week Volume Trend
<b>Southern Yellow Pine: #2</b>						
<b>2X4</b>						
8	225	-9	▼	++++	▲	▲
10	244	2	▲	++++	▼	▲
12	234	-3	▼	+++	▼	▲
14	240	4	▼	+++	▲	▼
16	256	-2	▲	+++	▲	▲
18	247	-8	▼	++	▲	▲
20	269	-1	▼	++	▼	▲
<b>2X6</b>						
8	221	-3	▲	++++	▼	▲
10	240	-14	▲	++++	▲	▲
12	246	-9	▲	++++	▼	▲
14	241	-10	▲	+++	▼	▲
16	239	-6	▲	++++	▼	▲
18	235	-12	▲	+++	▼	▲
20	264	-1	▲	+++	▼	▲
<b>2X8</b>						
8	251	10	▼	++	▼	▲
10	249	0	▼	++	▼	▲
12	254	9	▼	++	▲	▲
14	257	6	▼	++	▼	▲
16	272	6	▼	++	▲	▲
18	278	4	▼	+	▲	▲
20	278	0	▼	+	▼	▲
<b>2X10</b>						
8	253	-1	▼	++	▲	▲
10	262	-20	▲	+++	▼	▲
12	257	-10	▼	+++	▲	▲
14	269	8	▼	++	▼	▲
16	259	-6	▼	++	▲	▲
18	246	-7	▼	++	▲	◀
20	265	0	▼	++	▲	▲
<b>2X12</b>						
8	296	-4	▼	++++	▲	◀
10	271	-11	▲	++++	▲	▼
12	312	-12	▲	+++	▲	▼
14	278	-8	▲	++++	▲	▲
16	270	-7	▼	++++	▲	▲
18	249	-17	▼	++++	▲	▼
20	301	-19	▲	++++	▲	▲

**Mill Realization by Region: U.S. South**  
**Mill Realization Report: From: 07/15/10 To: 07/21/10**  
**Kiln Dried Lumber**  
Gross Prices - U.S. Dollars Per Thousand Board Feet

	Weekly Price	Weekly Price Change	Weekly Volume Change	Market Price Variation	Mid-Week Price Trend	Mid-Week Volume Trend
<b>Southern Yellow Pine: #3</b>						
<b>2X4</b>						
8	209	-7	▼	+	▲	▲
10	215	1	▼	+	▲	▼
12	215	-18	▲	+	▼	▲
14	222	3	▼	+	▲	▲
16	223	1	▲	+++	▲	▲
<b>2X6</b>						
8	197	4	▼	++++	▲	▲
10	216	6	▲	++++	▲	▼
12	212	2	▲	+++	▲	▼
14	217	7	▲	+++	▼	▲
16	208	-3	▲	+++	▼	▲
<b>2X8</b>						
8	206	2	▼	++	▲	▼
10	205	5	▼	++	▲	▲
12	209	3	▲	+++	▲	▼
14	205	-9	▲	+	▼	▼
16	224	5	▲	+++	▼	▼
<b>2X10</b>						
RL	174	--		+	▼	▲
<b>2X12</b>						
RL	--	--				

**Mill Realization by Region: U.S. South**  
**Mill Realization Report: From: 07/15/10 To: 07/21/10**  
**Kiln Dried Lumber**  
Gross Prices - U.S. Dollars Per Thousand Board Feet

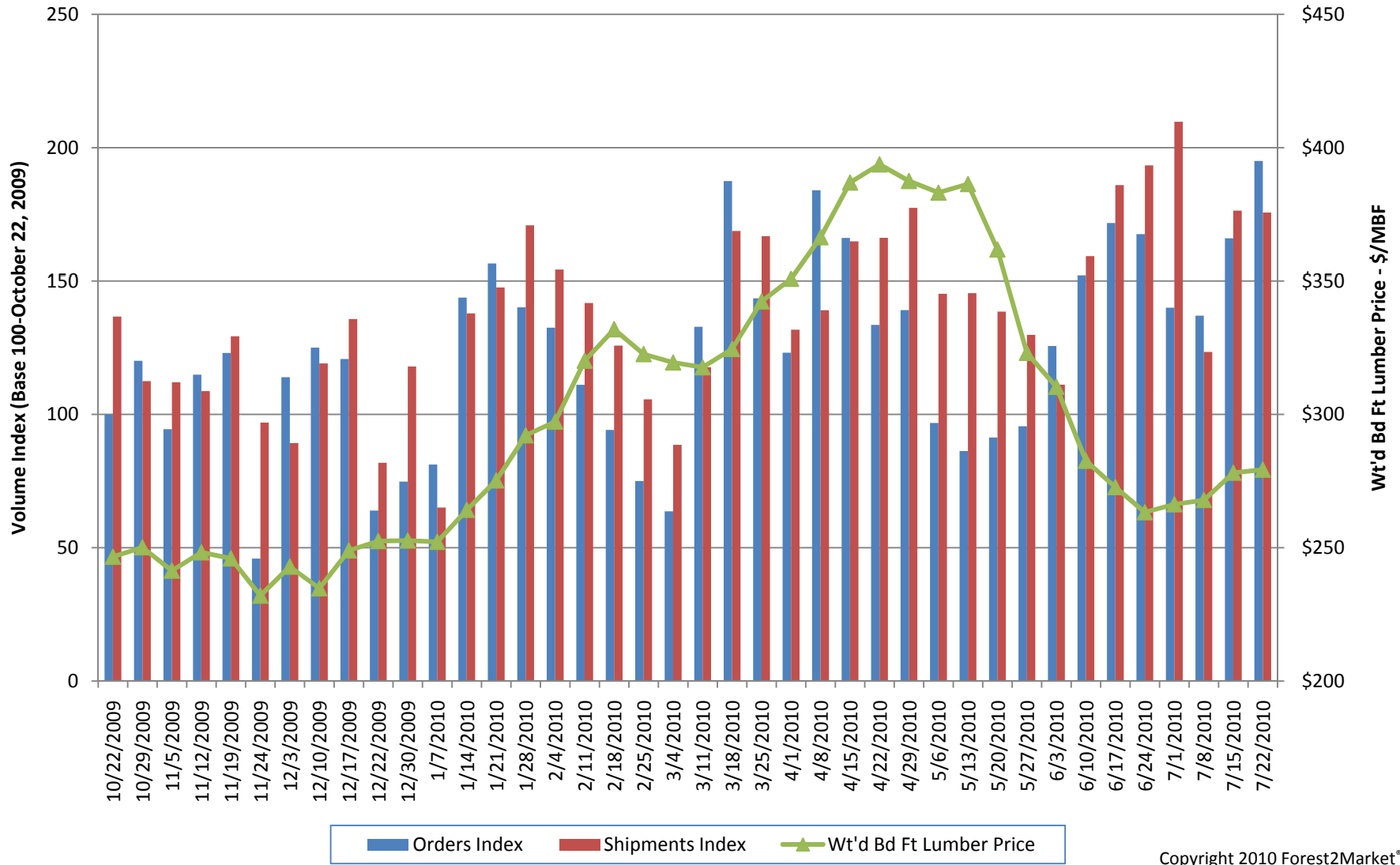
	Weekly Price	Weekly Price Change	Weekly Volume Change	Market Price Variation	Mid-Week Price Trend	Mid-Week Volume Trend
<b>Southern Yellow Pine: #4</b>						
<b>2X4</b>						
<b>RL</b>	176	-3	▲	+	▼	▼
<b>2X6</b>						
<b>RL</b>	179	5	▲	+	▼	▼
<b>2X8</b>						
<b>RL</b>	176	-1	▲	+	▲	▲
<b>2X10</b>						
<b>RL</b>	177	-4	▲	+	▲	▼
<b>2X12</b>						
<b>RL</b>	176	-4	▲	+	▼	▼



# SYP KD Lumber

## Orders & Shipment Volume vs Lumber Price

### 4Q2009 - YTD 2010



Copyright 2010 Forest2Market®