

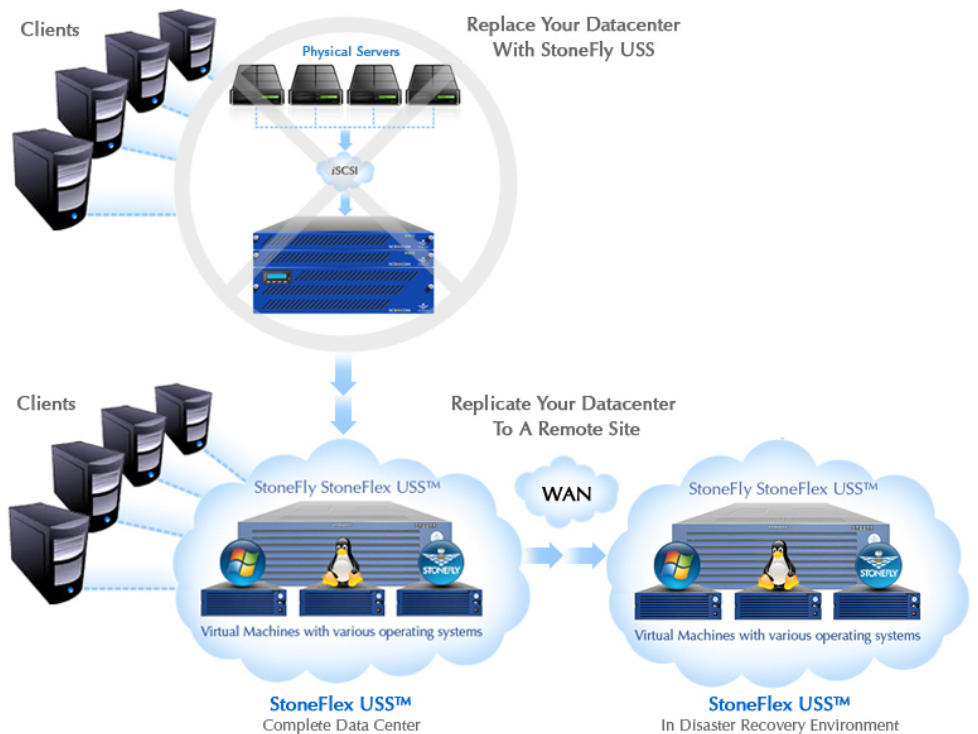


StoneFlex Unified Storage & Server (USS™)





StoneFlex Unified Storage & Server (USS™) Appliance

Consolidate your datacenter in one Appliance. StoneFly's StoneFlex USS™ system consists of unified storage and servers within a single physical hardware appliance. The StoneFlex USS™ platform is ideal for Cloud Computing environments where several virtualized operating system environments are desired. This allows for complete hardware utilization and considerable reduction in power/cooling costs as well as the ability to allocate resources to more demanding applications as required without the increased costs of additional hardware.



USS™ Series	USS1600	USS2400
High Performance & High Availability platform	Two Quad XEON processors 12/24GByte Memory 6G SAS technology	Hot-swap drives with Raid Protection Redundant Hot-swappable Power Supplies Dynamic storage expansion
iSCSI Storage / Server Ports	Standard-1Gb: 5x, Optional: Up to 11x Optional-10Gb: 2x up to 10x 10Gb (CX4, SFP+ Copper or SR/LR Optical)	
HW RAID Levels	0, 1, 5, 6, 10, 50	
Models	Standard: USS1600 High Availability: USS1600-HA	Standard: USS2400 High Availability: USS2400-HA
Storage Capacities	Standard: 8TB SATA-6Gb or 2.4TB SAS-6Gb Options: - Up to 128TB SATA - Up to 38.4TB SAS-6Gb - Up to 15.36TB SSD	Standard: 12TB SATA-6Gb or 3.6TB SAS-6Gb Options: - Up to 192TB SATA - Up to 57.6TB SAS-6Gb - Up to 23.04TB SSD



USS1600E Expansion Unit		3U Rackmount , Quad-SAS Interface with per unit capacities of: SATA-6G: ½ full: 8, 16TB, Full: 16, 32TB SAS(15k-6G): ½ full: 2.4, 3.6, 4.8TB, Full: 4.8, 7.2, 9.6TB SSD: ½ full: 512GB, 1920GB, Full: 1024GB, 3840GB
USS2400E Expansion Unit		4U Rackmount , Quad-SAS Interface with per unit capacities of: SATA-6G: ½ full: 12, 24TB, Full: 24, 48TB SAS(15k-6G): ½ full: 3.6, 5.4, 7.2TB, Full: 7.2, 10.8, 14.4TB SSD: ½ full: 768GB, 2880GB, Full: 1536GB, 5760GB

SCVM (IPSAN VM)

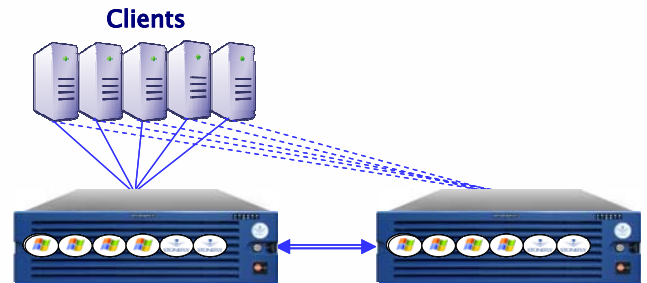
- iSCSI Based Storage Provisioning Appliance
- Gigabit or 10Gb (copper or optical) iSCSI port teaming, failover, and load balancing
- Comprehensive IPSAN volume performance reporting and statistics
- StoneFusion utilizing up to 8 virtualization processing cores with 4GB of DATA Packet and command queuing cache (Patented)
- MPIO & Jumbo frame support
- Web based Intuitive User Interface
- Simple, on-demand, no downtime volume or storage expansion
- Copy-on-write Snapshot with Read/Write, Scheduling, Rollback, and VSS agents for Exchange, SharePoint, SQL, backup SW, etc
- Synchronous mirroring
- Campus mirroring (iSCSI mirroring)
- Asynchronous Replication/Mirroring (CDP) with delta transfer and schedules
- Volume based Encryption (AES256 block level encryption)
- Thin Provisioning

Server VM Guest operating system options:



- Any flavor of Windows OS
- Windows Storage Server (WSS)
- Linux
- Operating system of your choice

Flexible Server Virtual Machines:

- Load your own Operating System or application
- Multiple Guest Operating Systems
- High-Availability Virtual Clustering



USS-HA

Physical specification	USS1600 / USS1600E	USS2400 / USS2400E
		
Form Factor	3U Rackmount	4U Rackmount
Dimensions (HxWxD)	5.2"x17.2"x25.5" (132x437x648mm)	7"x17.2"x26" (178x437x660mm)
Gross Weight	½ Full: 87lbs (39.5Kg) Full: 99lbs (44.9Kg)	½ Full: 96lbs (43.5Kg) Full: 114lbs (51.7kg)
Power requirements	Dual 1200W Power Supplies, Dual Cords 100V-10A, 240V-4A, 60-50Hz	Dual 1200W Power Supplies, Dual Cords 100V-11A, 240V-4.5A, 60-50Hz
Operating Temperature	10° to 35°C (50°F to 95°F)	10° to 35°C (50°F to 95°F)
Relative Humidity	8 to 90%, non-condensing	8 to 90%, non-condensing

StoneFly, Inc.
www.StoneFly.com
www.iSCSI.com

Phone: 510.265.1616
 Fax: 510.265.1565
 Email: Sales@StoneFly.com

Headquarters
 21353 Cabot Blvd
 Hayward, CA 94545

San Diego Office
 6191 Cornerstone Court, #105
 San Diego, VA 92121