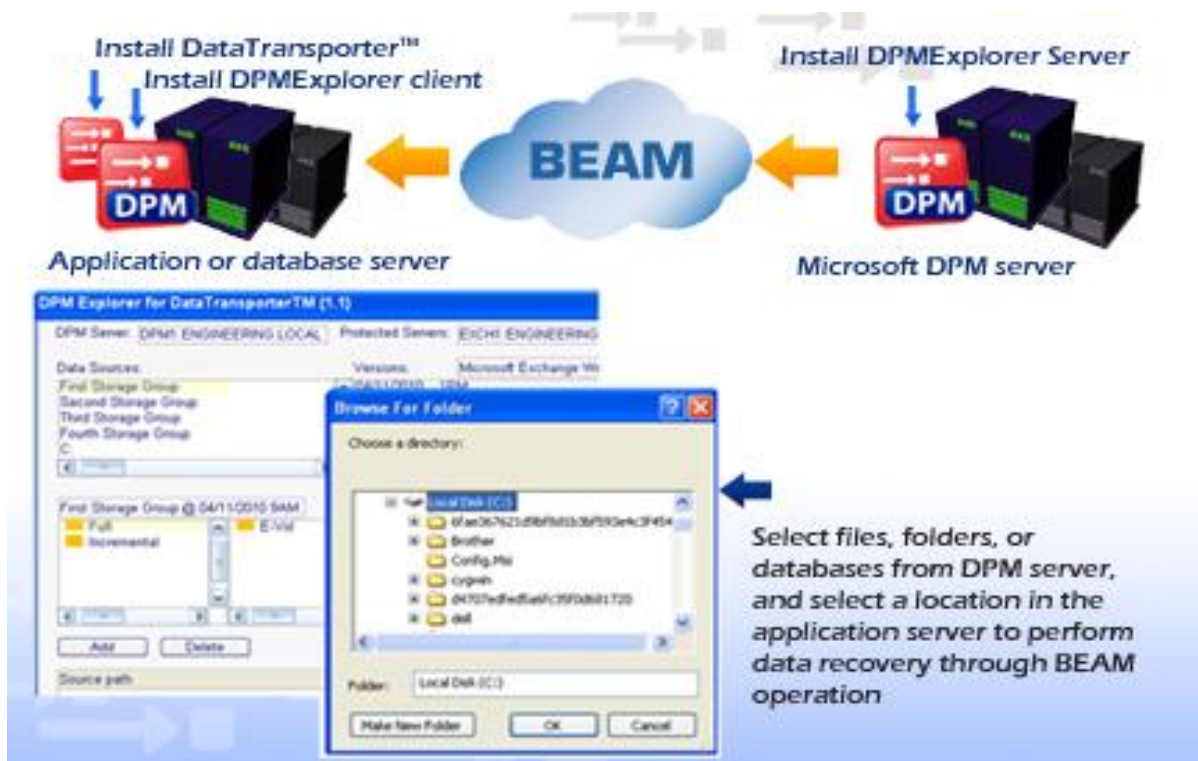


Instavia DPMExplorer for DataTransporter™ Alpha

DPMExplorer for DataTransporter™ is an instant data recovery tool. It allows IT administrators to restore their SQL servers, Exchange storage groups, SharePoint databases, files and folders from Microsoft Data Protection Manager repositories, and immediately gain read and write access to the recovering objects. Downtime for restoration is reduced to only a few seconds, regardless of data size.

DPMExplorer allows the user to browse the protected data history in the Microsoft Data Protection Manager (DPM) replica volumes. **DPMExplorer** consists of two components – a server and a client. The server component must be installed in the DPM server. The client component must be installed in the destination machine for the restored data, together with a functioning copy of **DataTransporter™**, as seen in the following diagram.



DPMExplorer client provides a graphic user interface that allows IT administrators to browse data history captured in a Microsoft DPM server. IT administrators can select the files, folders, or databases from the DPM server through the **DPMExplorer** GUI, select a recovery point (version), then designate a location to restore the data. When an IT administrator initiates a restoration from the **DPMExplorer** GUI, **DPMExplorer** would issue a BEAM command to the local **DataTransporter™** to restore the files from DPM. Once the recovering files begin to be copied from DPM to the destination, applications can immediately read or modify the data contained within the destination files.

Usage & Benefits:

Restoring SQL database, Exchange database, SharePoint database, files and folders	Eliminate unplanned downtime Reduce business risks
Instantly create a test environment (BEAM data object from DPM to a test environment)	Significantly reduce the time to create a test environment Increase productivity

Supported systems and platforms:**DPMExplorer client supported systems:**

File system – NTFS

Operating Systems: (4GB RAM minimum)

Windows 2003 with SP2 (x86 and x64)

Windows 2003 R2 with SP2 (x86 and x64)

Windows 2008 with SP2 (x86 and x64)

Windows 2008 R2 (x64)

Windows 7 (x86 and x64)

Require **DataTransporter™**

DPMExplorer server supported systems:

DPM 2007

Data types – File System, Exchange, SQL, MOSS

Operating Systems: (4GB RAM minimum)

Windows 2003 with SP2 (x86 and x64)

Windows 2003 R2 with SP2 (x86 and x64)

Windows Advanced Server 2003 with SP2

Windows Storage Server 2003 with SP2

Windows 2008 (x86 and x64)

Windows 2008 R2 (x64)

Windows Storage Server 2008

About Instavia:

Instavia is a leading provider of data delivery virtualization tools that enable instant data availability during data movement. Instavia's DataTransporter™ can be used for data migration, data recovery, data restructuring, test environment creation, and data verification.

Address:

Instavia Software, Inc.
1525 McCarthy Blvd. Suite 1052
Milpitas, CA 95035
U.S.A.
1-510-400-8843