

SPECIFICATION SHEET

RC Scrub-R™

**RoHS Ready ATE Test Sockets for
High Speed Chipscale Package Test**

No Board Wear

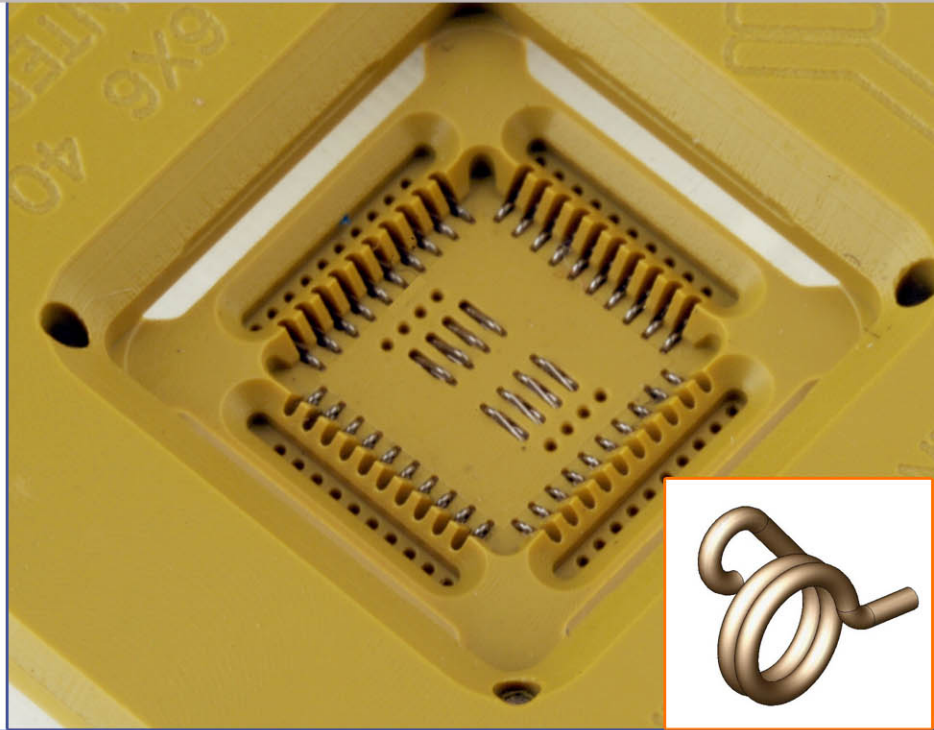
Long Cycle Life

24 GHz AC Performance

Easy to Replace Contact Sets

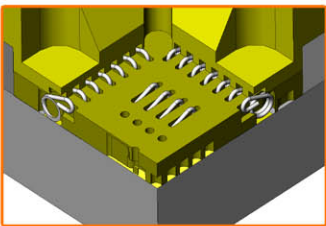
Cost Effective Components

Match to Existing Board Footprints

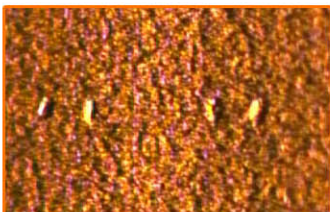


Offered in a broad range of standard and custom designed contactors and sockets for Chipscale, QFN, MLF and other flat pad devices, RC Scrub-R Technology provides excellent oxide penetration with its linear wiping action. Made from unplated semi-precious metal, the RC Scrub-R contact set is resistant to wear and field service ready with snap-in replacement parts.

RC Scrub-R Technology is a reliable discrete node, z-axis interconnect solution for high speed testing. With cost effective, easy to replace contact sets, these sockets will provide millions of reliable insertions for a fraction of the cost of legacy solutions, with all the RF performance



Cross Section of RC Scrub-R Socket



Board Pads After 250K Insertions

FEATURES

- Patented Compliant RC Scrub-R Contact Set
- Discrete Node All-Metal Surface
- Low Self-Inductance
- Consistent Resistance

BENEFITS

- Oxide Penetrating X-Y Scrubbing Action
- Highly Reliable Contact & Long Life
- Better Signal Integrity
- Known Discrete node Resistance Measurements

SPECIFICATION SHEET

ELECTRICAL SPECIFICATIONS

Self Inductance	~0.4 nH
Insertion Loss	< -1 dB to 24 GHz
DC Resistance	30 milliohm Plated BeCu
	60 milliohm Paliney 7

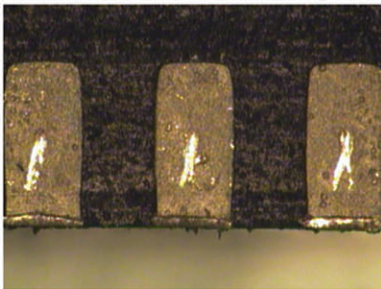
MECHANICAL SPECIFICATIONS

Free Length	1.04-1.09 mm
Test Height	.94 mm
Travel	.10-.15 mm
Translation	.10 mm
Contact Force	11-17 g
Tip Coplanarity	+/- .03 mm
Housing Life	>1,000,000 cycles
Contact Life	500,000+ cycles

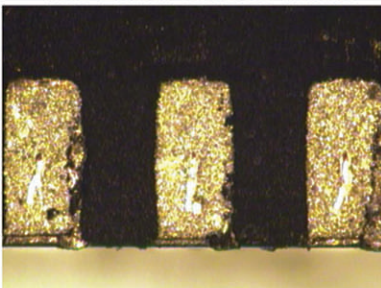
ENVIRONMENTAL

Temp	-40 to 155 C
------	--------------

Witness Mark Images

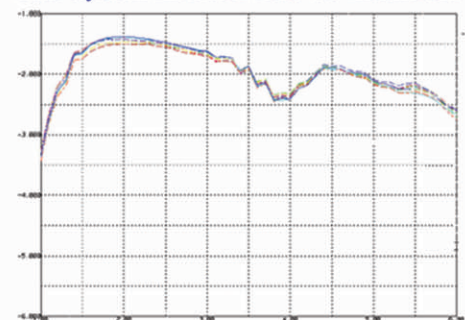


Tin Lead Solder Pads



RoHS Compliant Pads

ATE System Insertion Loss vs. Incumbent



ATE System Isolation vs. Incumbent

