

## Temperature@lert Cellular Edition



**Low cost, easy to use cellular network based protection for you or your company's valuable data, equipment, property and materials**

### Overview

Temperature@lert Cellular Edition is a low cost, easy to install, easy to use cellular temperature sensing and alerting device that can be used to protect widely distributed property and sensitive materials where network access is limited or unavailable.

### How it works

Using GSM cellular phone networks, Temperature@lert Cellular Edition provides 24/7 monitoring to provide out of range temperature alerts to you via emails, text messages, and/or a telephone call. It will also alert you when the temperature returns to normal. You can view the current temperature, temperature history, and set your alerts all from your personal Dashboard on Temperature@lert's website.

Should you lose power, the system will send and alert and continue to transmit for weeks on its internal back-up power supply. Our failsafe design means if our system ever fails to hear from your device, we'll alert you right away that something's not quite right.

### Cost Effective

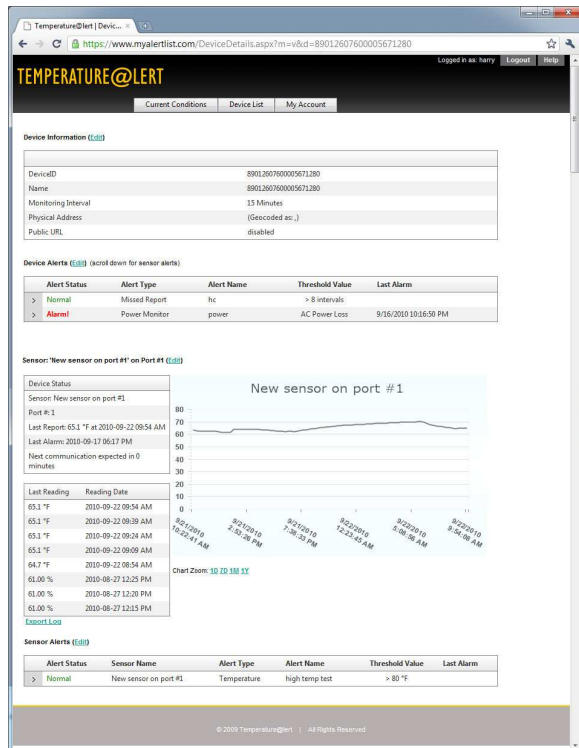
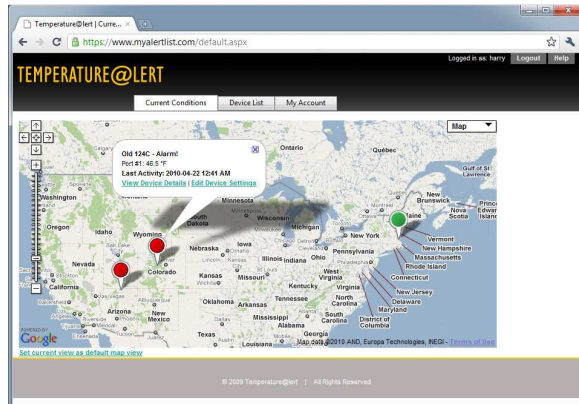
Our flat rate monthly monitoring plans start at very affordable rates. Our month-to-month service plan includes activation, wireless cellular service, alerts, Dashboard website access, and has no cancellation or other hidden fees. We like to keep our pricing simple - just like our products.

### Features & Benefits:

- Cost effective – low cost CELL300 monitors one or two sensor locations
- Easy to setup and use – no tech guy needed, just plug it in and it begins to transmit.
- Receive emails, text and telephone alerts when the temperature is too high or too low – take timely corrective action
- No internet or phone line needed; easy to install without costly wiring or hardware.
- Data logging of temperature history and current conditions – allows retrieval of data for analysis and troubleshooting
- PowerSense alerts you when AC power is interrupted, provides an early warning of potential problems.
- HealthCheck alerts you if the unit ever stops functioning
- Built in battery backup – temperature monitoring continues even if the power goes out for weeks
- All clear message when things return to normal – puts your mind at ease

## Dashboard Web-Based User Interface

Allows users to view single or multiple locations on a single screen



## Each Cellular Edition Kit Includes

- Cellular Edition base station
- 6' external temperature sensor
- Built-in rechargeable battery
- AC Wall adapter
- Unlimited technical support
- 1 year hardware warranty

## FAQ's

### Do I need a cellular service plan?

Yes, cost-effective plans start at \$21/month

### Are there any long term contracts or termination fees?

No. Temperature@Lert's monitoring plans are month-to-month. You can cancel anytime. There are no hidden fees or cancellation fees.

### How does the 30-day risk free trial work?

Try Temperature@Lert Cellular Edition for 30 days. If for any reason, you do not like the product, just contact us to return everything for a full refund (minus shipping charges).

### Need more than 5 devices or a customized monitoring plan?

Drop us a line and we'll be happy to put something together for you that addresses your unique needs.

## Specifications

|  |  |
|--|--|
| <b>Model</b>                                     | <b>TM-CELL300</b>  |
| <b>Dimensions</b>                                | <b>6.9" x 4.9" x 1.5"</b>  |
| <b>Operating Temperature</b>                     | <b>-30°C to 70°C</b>   |
| <b>Power Source</b>                              | <b>5VDC 0.5A</b>   |
| <b>External Sensor Range</b>                     | <b>-55°C to 125°C</b>  |
| <b>Sensor Accuracy</b>                           | <b>±0.5°C Accuracy from -10°C to +85°C</b>                                       |
| <b>Temp/Humidity Sensor Range &amp; Accuracy</b> | <b>-55°C to 125°C (-67°F to 257°F)<br/>10% to 90% RH @ Operating Temperature</b> |
| <b>Built in Sensor Jacks</b>                     | <b>2</b>   |
| <b>Max Expandable Jacks</b>                      | <b>10</b>  |
| <b>Maximum Sensor Cable Length</b>               | <b>100'</b>  |
| <b>Internal Battery Backup</b>                   | <b>Li-Ion 3.7V (this device must be recycled properly)</b>                       |
| <b>Communications</b>                            | <b>Quad Band GSM GPRS</b>  |