



Zero-Touch Windows 7 Migration

Migrate7™ automatically extracts and preserves PC user states - the layout, customizations, metadata, connections, templates, tools and data files/structures that define how users interact with their PCs - and securely transports them to new or upgraded PCs (or virtual images) in minutes. Migrate7 makes OS migrations, such as from Windows XP to Windows 7, faster and easier to set up and manage.

Migrate7 is a unique application with an unmatched feature set:

■ ZERO-TOUCH WINDOWS XP TO WINDOWS 7 MIGRATION

Full support for automated, zero-touch Windows XP to Windows 7 migrations.

■ EASY-TO-USE, SOPHISTICATED CONFIGURATION TOOLS

Manage and configure migration setup using a graphical interface. Apply overrides and advanced exceptions to migration rules.

■ MIGRATION OF ANY APPLICATION

Support migration of any application's settings and data using a GUI - no .xml files needed.

■ UNMATCHED MICROSOFT OFFICE 2010 SUPPORT

Migrate settings and data with full support for Office 2003, 2007 and 2010.

■ CROSS-VERSION APPLICATION MIGRATION

Settings migrate across versions during application upgrades, including Microsoft Office as well as non-Microsoft applications.

■ INCREMENTAL BACKUP AND RESTORE

Use to define and implement ongoing user state protection, in addition to PC migration. Better-enable phased migrations.

■ NO CLIENT INSTALL REQUIRED

Allows for "agent-less migration" with no install/uninstall of Migrate7 needed on the client.

■ MICROSOFT SYSTEM CENTER CONFIGURATION MANAGER ACCELERATOR

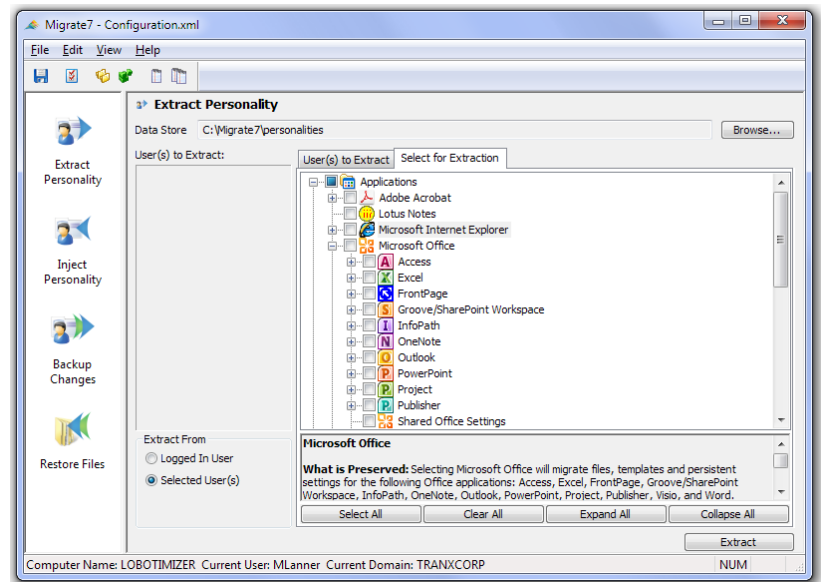
Integration with System Center Configuration Manager.

■ HANDLES LEGACY OPERATING SYSTEMS AND APPLICATIONS

Support for Windows 2000 and older Microsoft applications and versions.

■ COMPREHENSIVE LOCAL AND NETWORK USER STATE MIGRATION

Capture detailed user states, including application settings, from local profiles.





Zero-Touch Windows 7 Migration

■ INTEGRATION WITH OTHER DESKTOP MANAGEMENT SUITES

Can be used with any client deployment suite. Available for purchase today with FrontRange's DSM Suite and Materna's DXUnion software.

■ ENCRYPTION OPTION

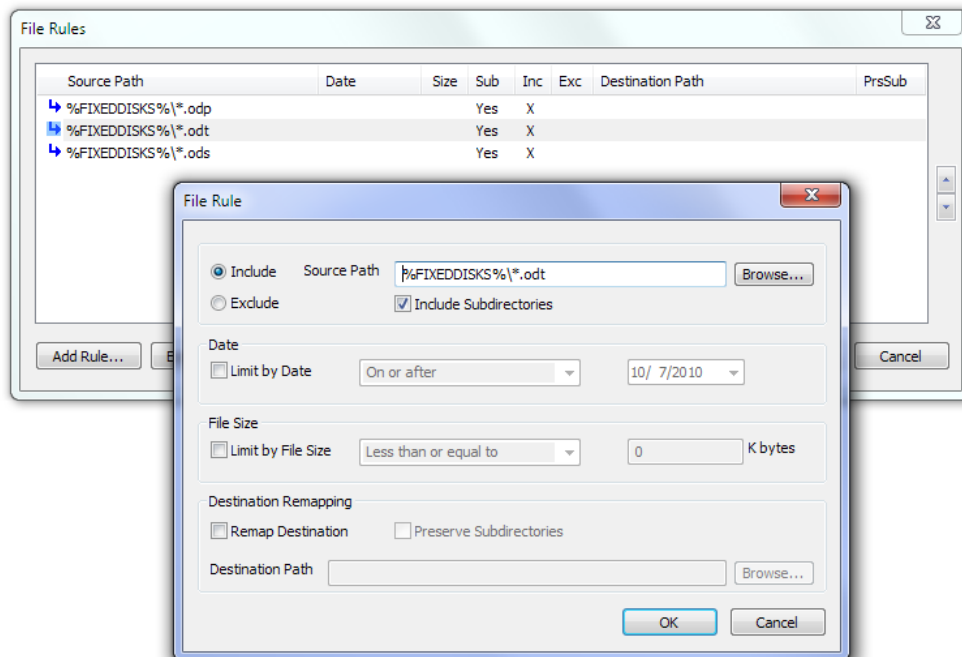
Encrypt user states in their temporary locations and restore on the new system with a password.

■ TRANSPORT OVER HTTP(S)

Isolate personality transport, storage, and access from other network assets.

■ EXPERT SUPPORT

Experienced support reps available to answer your questions and assist with your migration. Rich documentation included.



These features provide significant benefits to enterprise migrations, including:

- **REDUCED COST OF MIGRATION.** Migrate7 cuts the time required for enterprise migration setup and configuration from 1-2 weeks (av.) to hours. GUI tools and command line deployment make large migrations fast and easy. Phone support answers your questions to quickly get your migration on track.
- **LOWER POST-MIGRATION SUPPORT COSTS.** Eliminate post-migration support requirements by moving critical user settings. Comprehensive log files enable fast and easy analysis of everything extracted and injected.
- **MAXIMAL USER SATISFACTION.** User customizations are preserved, maximizing productivity and reducing the learning curve. Automated migrations occur during off-hours, minimizing user disruption.
- **ENFORCEMENT OF CORPORATE POLICIES.** Migrate7 lets IT policy-makers decide which data files to retain, and where they will be stored. The result? A standardized environment that's less expensive to support.
- **SECURE MIGRATIONS.** Encryption and HTTP transport ensure security for data and settings.
- **INCREASED PROFITABILITY.** IT Consultants can achieve increased profit on migration projects by cutting days from their cost of labor.

Migrate7 has been used in enterprise settings for more than 10 years. It is the tool of choice for large migration projects at organizations such as the IRS, DARPA, Hewlett-Packard, Wells Fargo, the Pentagon, Dow Corning and large central banks.

