



Classic  
COLLECTION

## THE RICHMOND II



1,750 SQ. FT.,  
3 BEDROOMS, 2 FULL BATHS,  
ONE STORY



THE RICHMOND II



THE RICHMOND II B

Designed with flexibility in mind, the Richmond II is popular with families of all sizes. The open kitchen has plenty of workspace for preparing your favorite meals, and a dramatic cathedral ceiling in the great room adds to the openness of this home. The spacious owners retreat, complete with a separate tub and shower includes a walk in closet. Some of the most popular options for this home are the open staircase to the basement and the 12 x 14 sunroom. If you like the layout of this but are looking for less square footage consider the Richmond.

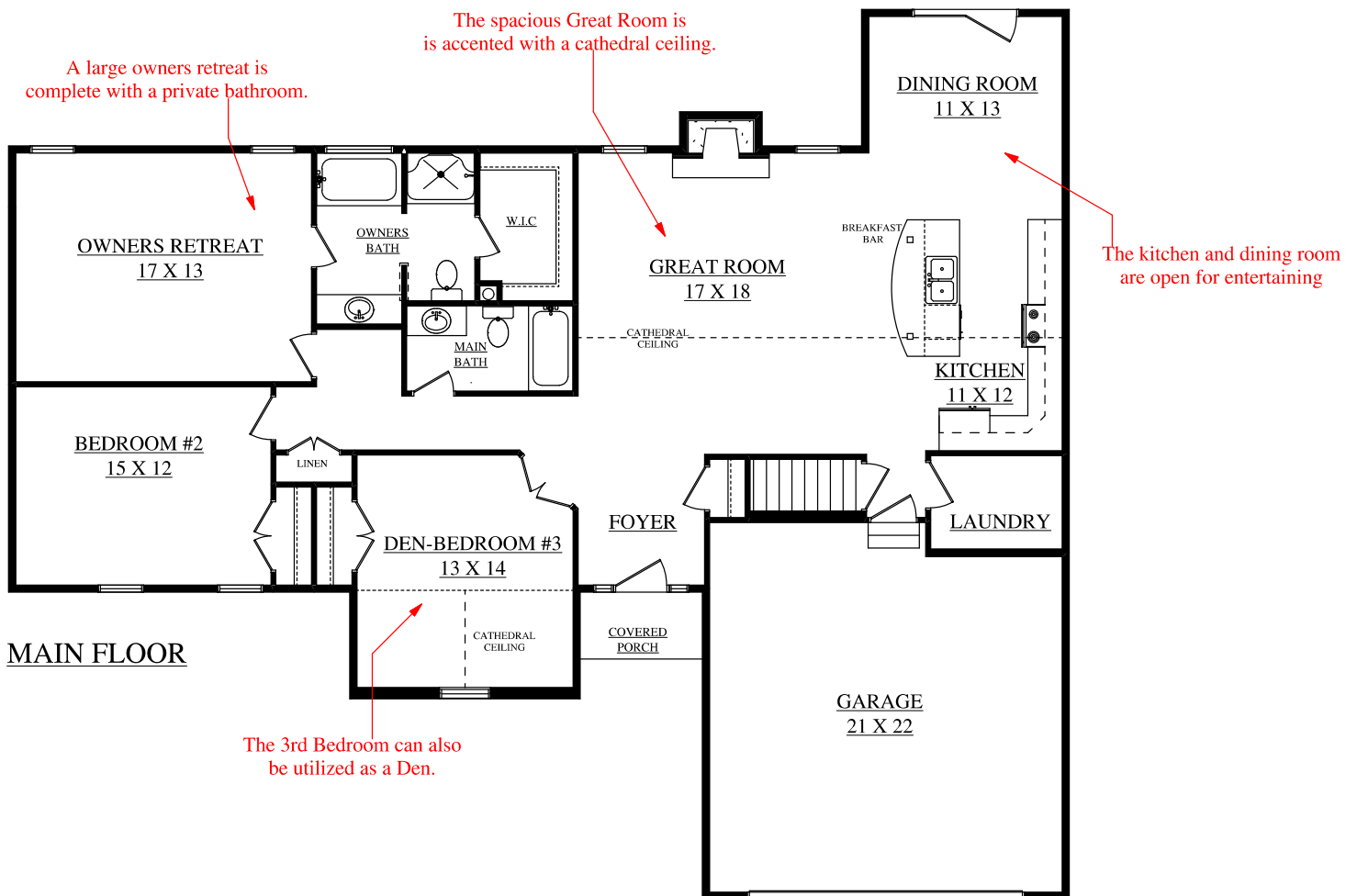
*Paul Schumacher*  
**SCHUMACHER HOMES**  
The Best Value In Custom Homebuilding



THE RICHMOND II D

# THE RICHMOND II

## THE RICHMOND II — MAIN FLOOR PLAN



This drawing is for illustration purposes. All dimensions are approximate and designs are subject to field variations. Some windows and floor plans may vary with elevations. Elevations may reflect optional features, such as side-load garage, etc.