

Primary Data Center Site in Grenada, MS

TVA's electricity rates fall well below the national average and with 99.999 percent reliability since 2000, TVA is one of the most reliable power providers in the country. TVA has recently authorized qualified data centers to be eligible for TVA manufacturing rates. Low electric rates, networking infrastructure, accessibility to major markets and talent pool, and local and state incentives, ensure productive, low-cost operations for your data center.

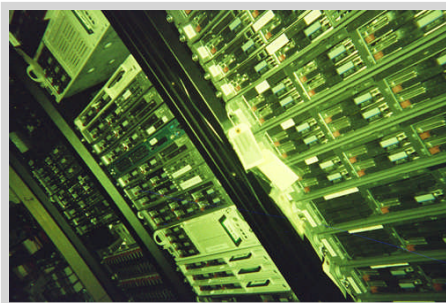
TVA Electric Rates

- Data Centers qualify for TVA's most competitive rates
- Industrial Rates: 19 % lower than national average
- Commercial Rates: 10% lower than national average

Electric Reliability

- TVA has had 99.999 percent reliability since 2000.

- 99.999 percent reliability, low cost power
- Long haul fiber-optic from multiple carriers
- Access to MSU Certification for Information Assurance Program.
- Low risk of natural disasters



Industry Research

- MSU Critical Infrastructure Protection Center
<http://www.security.cse.msstate.edu/cipc/>
- Holmes Community College
<http://www.holmes.cc.ms.us/>
- Polymer Research Institute
<http://www.usm.edu/polymer/index.html>

Distance to Major Markets

City	Distance / Direction	Drive Time
Atlanta, GA	367 miles / East	6 hours 5 min
Birmingham, AL	224 miles / SE	3 hours, 50 min
Dallas, TX	513 miles / SW	8 hours 5 min
Houston, TX	535 miles / SW	9 hours, 10 min
Jackson, MS	113 miles / SW	1 hour 5 min
Little Rock, AR	220 miles / NW	3 hours , 55 min
Memphis, TN	99 miles / North	1 hour 35 min
Nashville, TN	305 miles / NE	4 hours, 55 min
New Orleans, LA	299 miles / South	4 hours 50 min
St. Louis, MO	383 miles / North	6 hours, 5 min

Rand McNally, <http://www.randmcnally.com> (as of June 2009)

Productive Workforce

Grenada employers value their workers as a major asset.

- “Good work ethic”
- “Adaptable, willing to change/improve skills”
- “Engaged and care about the quality of their work”
- “They want to make a difference, not just punch a clock”
- “Strong sense of ownership for their work”
- “Many employees with perfect attendance”

Source: Employer interviews, 2009.

Training

Holmes Community College

Located in the Industrial Technology Complex on the Grenada Campus Workforce Development provides a variety of non-credit and credit training options.

- Computer Information Systems
- Computer Network Support
- Computer Programming
- Software Engineering Technology
- Electronics Technology
- Heating, Ventilation & Refrigeration Technology

Energy

Service reliability in Grenada exceeds 99.99%.

- **Tallahatchie Valley Electric Power Association.**

www.tvempa.com

**Grenada County
Economic Development District
135 1st. Street, Grenada, MS 38901
662.229.9502
www.GrenadaMeansBusiness.com**

Workforce

Grenada’s surrounding workforce of 54,000 is non-unionized and oriented to manufacturing, especially fabricating, forming, forging, finishing and painting. Productivity is excellent, with a 3% absenteeism rate and 5% turnover rate (Mississippi Development Authority).

Representative Wage Rates for Parts Industry		
Occupation	Starting	Experienced
Computer Programmers	\$19.04	\$27.36
Computer Software Engineers / Applications	\$21.31	\$54.88
Computer Software Engineers / Systems Software	\$20.85	\$40.03
Database Administrators	\$16.89	\$31.37
Network & Computer Systems Administrators	\$19.20	\$26.69
Computer Systems Analysts	\$18.10	\$32.44
Network Systems and Data Communications Analysts	\$18.60	\$32.15
Computer Specialists / All other	\$27.61	\$34.63
Supervisors/Managers of Office and Admin Support	\$13.49	\$24.59
Computer & Information Systems Managers	\$21.23	\$43.31
Compensation & Benefits Managers	\$23.87	\$37.29
Managers / All other	\$20.64	\$36.25

Mississippi Dept. of Employment Security, LMI Div., 1st Quarter 2007, Grenada County/MSA (Apr 2009)

Incentives

Please contact us for a customized incentive package: (662) 229-9502.

Incentives	
Name	Description
Jobs Tax Credit	Tax credit against MS Corporate Income Tax
Rural Economic Development (RED) Tax Credit	Tax credit against MS Corporate Income Tax
Existing Manufacturer Tax Credit	Tax credit against MS Corporate Income Tax
National or Regional Headquarters Jobs Credit	Tax credit against MS Corporate Income Tax
Manufacturing Investment Tax Credit	Tax credit against MS Corporate Income Tax
Skills Training Tax Credit	Tax credit against MS Corporate Income Tax
Sales and Use Tax Exemption for Construction or Expansion	Tax exemption
Sales and Use Tax Exemption for Bond Financing	Tax exemption
National or Regional Headquarters Incentive	Tax exemption
Industrial Property Tax Exemption	Tax exemption
Industrial Revenue Bond Exemptions	Tax exemption
The Advantage Jobs Incentive Program	Tax Rebate

