

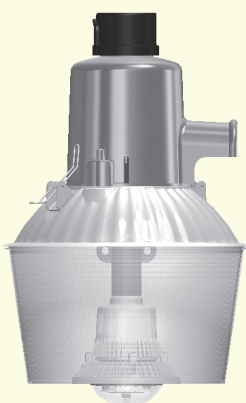
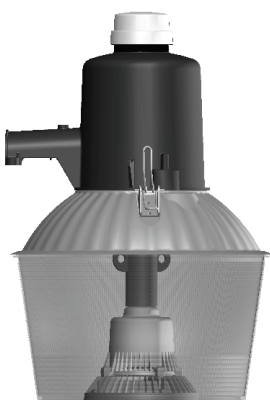
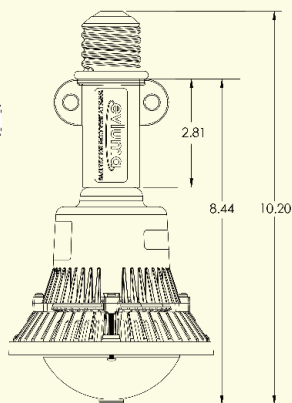
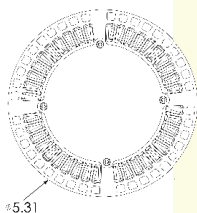
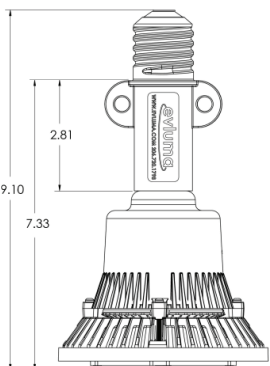
# Clearlight LED Luminaires



EcoSpot



Beacon



Ask about alternative in-fixture mounting options.

## Description

The Clearlight family of LED replacement lamp / luminaires is used in mogul base, dusk-till-dawn, outdoor fixtures. Each luminaire is approved for use in fixtures using 50-175W MV, or 70-150W HPS bulbs. Because Clearlights are direct screw-in replacements, owners of dusk-till-dawn fixtures are able to take advantage of the improvements in energy efficiency, night-time visibility, and color quality related to using LED technology without discarding existing assets.

## Construction

- Die cast aluminium housing and heatsink. Housing is powder coated.
- High efficiency reflective optics with a customized, impact-modified optical acrylic diffused cover.
- Contains 16 CREE LEDs.
- Silicone encapsulated integral driver in weather tight compartment.
- Durable and shatter resistant .
- Mercury Free. PCBs and solder are lead free. Emits no UV.

## Electrical Performance

- Input Voltage = 120VAC/ 240VAC, 60Hz.
- Power factor >0.9.
- Integral high efficiency LED Driver.
- Class C lightning strike protection for long life in harsh electrical environments.
- Suitable for outdoor use in ambient air temperatures -40°C to 45°C. No warm up time is required; on/off is instant without reducing the service life of the lamp.

## Thermal Management

Luminaire uses active cooling with no frictional parts to rub or wear out. LED life is assured by patent pending protection circuitry that controls current levels to the LEDs based on temperature. Temperature is measured at the LED package, often referred to as the solder point temp, or  $T_{SP}$ . At 65°C the fixture begins to cut back on the current to the LEDs to either maintain, or reduce the temperature back down to 65°C. Thermal management is the key to the Clearlight's long life and 70,000 hour L70, easily 3x that of legacy MV or HPS.

## Compatibility

Compatible with 50-175W MV or 70-150W HPS mogul base, dusk-till-dawn fixtures, sometimes referred to as NEMA Type 5, or IESNA Type V.

## Maintenance Time and Efficiency

Clearlight luminaires require less maintenance than HPS, or MV bulbs; no more replacing the ballast or the starter as neither is required for operation once a Clearlight is installed. Left installed, the ballast continues to run independently. Make your fixture ultra efficient by wiring around the ballast. Ask a sales representative for a payback calculator.

## Warranty

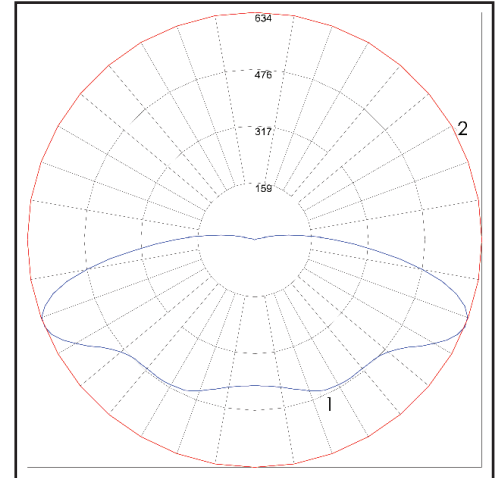
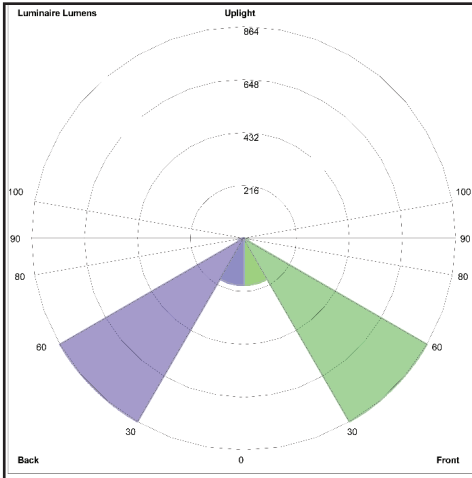
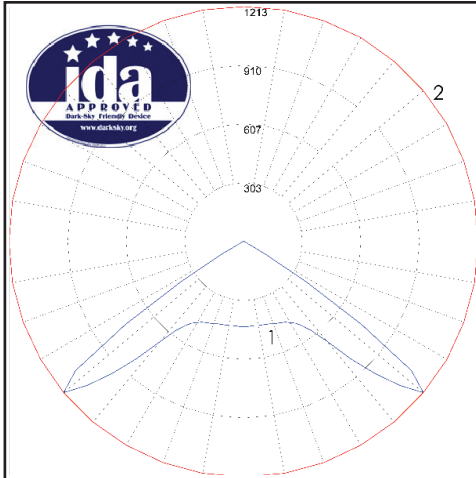
5 year parts and labor warranty.



# Clearlight LED Luminaires

## EcoSpot 40W LED Clearlight

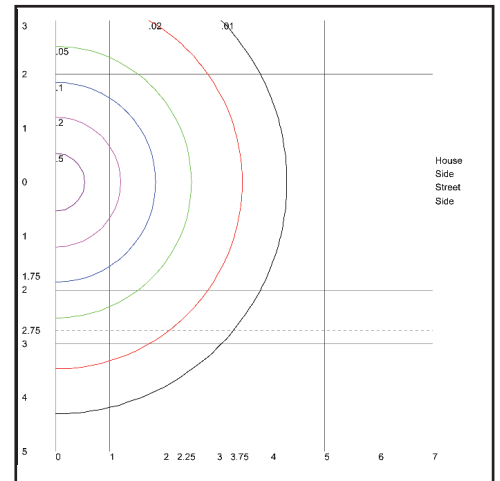
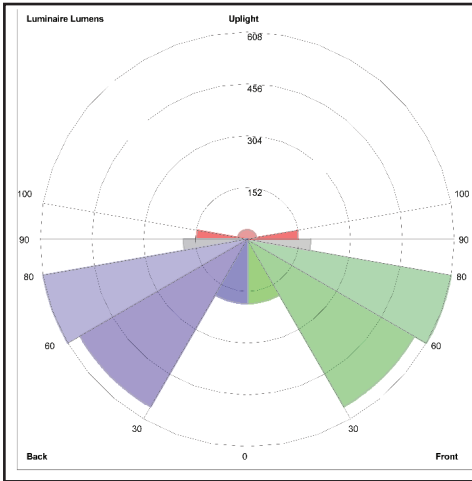
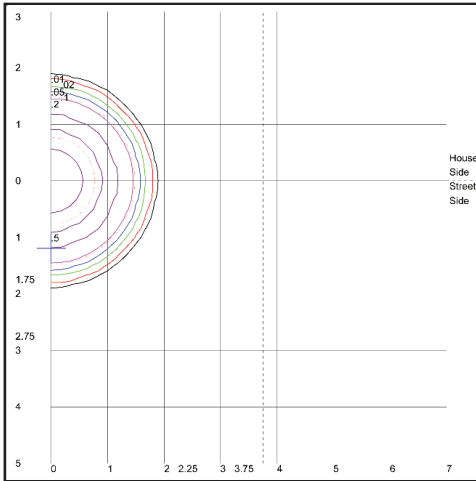
## Beacon 50W LED Clearlight



**EcoSpot Polar Candela Distribution:**  
Plot 1: Vertical plane through horizontal angles  
Plot 2: Horizontal cone through vertical plane

**EcoSpot Backlight, Uplight and Glare: BUG**  
No Glare, Full Cut-Off light  
IDA Dark Sky Friendly Device

**Beacon Polar Candela Distribution:**  
Plot 1: Vertical plane through horizontal angles  
Plot 2: Horizontal cone through vertical plane



**EcoSpot IsofootCandle Plot:**  
Values Based on 25.25 ft. Mounting Height  
Peak Vertical Angle: 50°

**Beacon Backlight, Uplight and Glare: BUG**

**Beacon IsofootCandle Plot:**  
Values Based on 25.25 ft. Mounting Height  
Peak Vertical Angle: 67.5°

Name	PN	Watts	Input Voltage	Efficacy (lpw)	CRI	Target CCT	IES Type	BUG	LM-79	LM-80	Driver	Pf	IP Rating
Beacon	91635049	50W	120-240 AC	>63	78	4500K ± 300	V	B2-U3-G1	Y	Y	940ma	>0.9	65
EcoSpot	46505625	40W	120-240 AC	>54	74	6000K ± 500	V	B1-U1-G0	Y	Y	650ma	>0.9	65

5 Year Warranty. Lumen Maintenance (L70) at 70,000 hours.

Watts given at typical operating temperature.

Clearlight luminaires use CREE LEDs. LM-80 data provided by CREE.

LM-79 Photometric & Electrical Performance verified by ITL Boulder.

In-Situ testing performed by CLTC. Evluma is a member of Quality Advocates.

UL testing in progress at MET Laboratories Inc., 33439 Western Ave. Union City, CA.

Made in the U.S.A. of U.S. and imported parts.



**FC Part 15 Class A**  
UL Pending