



Total IT Infrastructure Management

Infrastructure Management

The risks and costs associated with unmanaged infrastructure are immense. In data centers, exceeding electrical limits can cause serious outage, and incorrect changes to the infrastructure can often result in downtime. Wasted or underutilized equipment is costly, drawing power and taking up valuable rack space. Infrastructure changes in an unmanaged environment are time consuming and error prone.

An IT Infrastructure Management system is required if organizations are to be able to provide infrastructure visibility, accurate change control and meet corporate compliance, governance and security requirements. Organizations need the ability to consolidate all infrastructure information in a single, standard repository to ensure accurate and efficient change planning, control, visibility and reporting of the entire physical IT infrastructure. An IT Infrastructure management solution must be highly scalable, global in scope and adaptable to any environment, but it must also be easy and intuitive to use and provide access to information wherever it's required.

The CableSolve Solution

CableSolve solves the problem of IT infrastructure management. CableSolve combines powerful, feature-rich, client, server and web applications with the highly advanced CableSolve data capture handheld. The ability to view and then accurately add and update records on the CableSolve handheld in 'real-time' when an infrastructure change is made is critical to effective management and control.

CableSolve can record the entire physical infrastructure, including power and data connectivity and retains a full history of moves and changes. CableSolve can query assets such as SNMP power devices and servers to provide an up-to-the-minute view of the entire infrastructure. Visual dashboards of capacity and historical trends present this information in the exact format required.

Companies that use CableSolve say a key reason they do is their ability to use the information within CableSolve to reduce operational overheads and significantly improve service levels within the management of the infrastructure. Individual users of CableSolve say that having access to the entire database of records in the palm of their hands, makes them more efficient and effective than before.

CableSolve is used in data centers, work-areas and campus environments.

In the data center, CableSolve manages the entire equipment life-cycle from capacity planning to asset installation, commissioning and monitoring. In the work-area, the Inventory Management and Work Orders modules of the desktop and handheld go hand-in-hand to ensure that, even when there are thousands of items to be deployed, or whole floors of people to be moved, the handheld guides and most importantly, records everything as it happens. CableSolve is able to document and manage Campus network infrastructure as it is routed through conduits and inspection points.



Infrastructure Information



Discover and Add

CableSolve has multiple methods for adding equipment and connectivity. It can be as simple as adding data on the desktop client, but CableSolve also has complete add, connect and audit functionality built into the handheld. This means that it is possible to create and fully document equipment in the work-area or data center from the CableSolve handheld. Other methods for adding data include spreadsheets, SNMP discovery or the web services XML API.



Power and Data

Full power and data connectivity is recorded within CableSolve. This provides the ability to view paths of connectivity, to confirm redundant paths and to view power utilization data at any level within the infrastructure.



Standardize Records

CableSolve consolidates and standardizes multiple types of information including; purchase, asset, location, historical, ownership, support, connectivity and configuration information. With CableSolve, the data can be imported and managed within a single, secure, structured database and can be viewed across the entire enterprise. Often CableSolve can replace multiple stove-pipe vendor tools.



CableSolve Configurability

An underlying principle behind CableSolve is that every organization has different requirements when it comes to the data they wish to store. CableSolve permits the use of completely customizable attributes and templates so that literally anything can be recorded and managed. All records are available at the desktop or CableSolve handheld. CableSolve is simple and straightforward to configure/customize to meet your exact information requirements. CableSolve administrators can make the changes with ease.



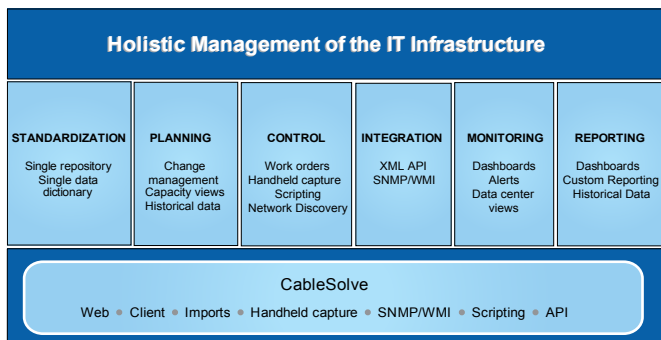
Rack and Plan Views

CableSolve supports rack and plan views of the infrastructure. CableSolve overlays and automatically updates equipment on graphical views as the equipment moves within the infrastructure so there is always a visual representation of exactly where things are. All graphical views are fully supported on the handheld. Capacity information can be overlaid on plan views to visually show current capacity using both static and network queried data.



Data Center Utilization

The Power to Manage



Extending

CableSolve has a very powerful built-in scripting engine using C# or VB languages. The scripting allows organizations to enhance and extend the core application. Scripts can be triggered on change, run periodically or on demand. Scripting can be used to query and record external SNMP or WMI sources or internal data to summarize and consolidate information. This can include data center statistics such as DCiE or PUE. SNMP scripting can be used to send remote commands to equipment.



Planning and Control

Planning change is quick, simple and accurate. Use of the CableSolve handheld ensures changes are recorded as they are made, providing data that is always up-to-date and highly accurate. Accuracy that is vital when planning further changes. CableSolve supports a practical work-orders system that allows multiple steps to be defined for each change.



Integration

The CableSolve web services XML API allows full read and write capability to the CableSolve database, ensuring integration with an organization existing systems. This includes access to historical data and work-orders for integration into corporate service desk systems.



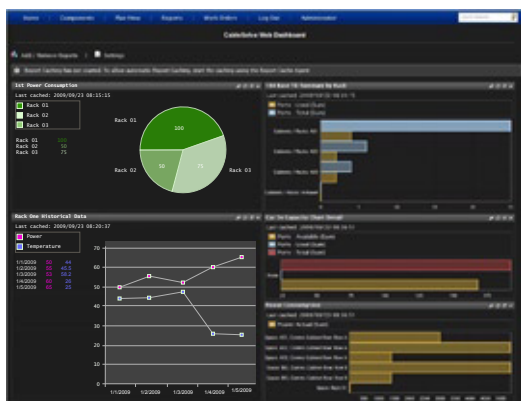
Monitoring and Reporting

Infrastructure information is available in a wide variety of formats including customized dashboard views, graphical representations of the data center and its current capacities, and scheduled reports e-mailed directly to users. CableSolve supports a fully integrated user customizable reporting and export system.



Secure Data

Accurate and complete records ensure the infrastructure is secure from unintentional downtime. Role, attribute and zonal security options within CableSolve ensures only authorized users can view, synchronize or modify data. Security can be set on an exception basis to make management simple. Data encryption is supported.



Dashboard View



Facts about CableSolve

- Typical ROI for CableSolve is less than 8 months.
- CableSolve is used by companies in multiple market segments, including Government, IT, Health, Transportation, Telecoms, Military and IT Service management.
- The world's largest companies in IT services, networking equipment and media all use CableSolve.
- CableSolve is sold and supported on 5 continents.

CableSolve Business Benefits



Trust

The CableSolve handheld ensures engineers are efficient and accurate in managing change. They don't need to spend time 'auditing' what is currently in place before being able to plan further changes. With up-to-date records, changes can be planned and approved right from the desktop and executed on the handheld.



CableSolve Business Benefits



Total Visibility

Visibility and Control of the entire IT infrastructure is achievable with CableSolve. With complete visibility, corporations will achieve significant staff efficiencies, far fewer problems with equipment and infrastructure management and fewer outages caused by incorrect change or capacity problems. Ultimately, visibility of information drives greater data center efficiencies leading to a more productive, greener data center.



IT Infrastructure, Assets and Connectivity - the Physical Layer

CableSolve successfully brings together all aspects of physical layer control while providing required management information using a unique combination of handheld, server, desktop and web functionality. With the CableSolve data capture handheld, companies can manage what they want, when they want and where they need to, recording changes in real-time. CableSolve can support ITIL initiatives and, with the configurability of its database, can act as the CMDB for the infrastructure.

**Complete, Portable,
IT Infrastructure Management**



Green Management

Many organizations today strive to be greener, but to do so, they must have baseline records and a means for monitoring changes. CableSolve ensures companies know on a daily basis their power consumption and heat output, allowing them to make and measure the changes (and savings) for tomorrow. The adage "You can't manage what you can't measure" has never been truer.



CableSolve Certified Solutions Provider

Cormant Technologies has partners on five continents to support customers. The CableSolve partners are able to assist with CableSolve evaluations and proof-of-concept deployments, and then supply customers a full range of components including software, handheld devices, labels, training, consulting and auditing services. All systems are designed to get new customers up and running as soon as possible and keep existing customers running smoothly for years to come.



World Class Support

CableSolve is offered with an annual preferred support contract which provides access to all major and minor CableSolve releases. Local CableSolve Certified Solutions Providers are the first line support for CableSolve. They are backed by the Sales and Support Groups at Cormant Technologies to provide world-class pre- and post-sales support, including a 24-hour customer support desk.



Training

A range of CableSolve technical education courses are available from basic user training to advanced scripting. Customized courses can also be arranged.



Certified Solution Provider

USA/CANADA

Cormant Inc.
Phone: 1 805 776 3476
Toll Free: 1 855 CORMANT
Email: sales@cormant.biz
Web: www.cormant.biz

Com-Net Communication Cabling
and Network Solutions Inc.
Phone: 1 877 647 7778
Email: CableSolve@com-net.ca
Web: www.com-net.ca

ASIA PACIFIC

Cormant Technologies Inc.
Phone: +63 2 814 5151
Email: sales@cormant.com
Web: www.cormant.com

LantroVision (S) Ltd
Phone: +65 6275 0160
Email: marcom@lantro.com
Web: www.lantro.com

AUSTRALIA/NEW ZEALAND

Avantex Australasia Pty Ltd
Phone: +61 2 9907 8910
Email: sales@avantex.com.au
Web: www.avantex.com.au

UK/EUROPE

Cormant Technologies (UK) Ltd.
Phone: +44 208 144 9814
Email: sales@cormant.co.uk
Web: www.cormant.co.uk

HellermannTyton Data Ltd
Phone: +44 1604 706 633
Email: sales@htdata.co.uk
Web: www.htdata.co.uk

The BGM Group
Phone: +44 844 847 4330
Email: contactus@thebgmgroup.com
Web: www.thebgmgroup.com

ITALY

Channel Management
Phone: +39 08 11 957 7301
Email: bruno.ucello@channelmanagement.it
Web: www.channelmanagement.it

IRELAND

Temple Sales & Distribution
Phone: +353 1 427 1400
Email: darren@templesales.com
Web: www.templesales.com

Learn more about CableSolve at
www.cormant.com

Cormant and the Cormant logo and CableSolve and the CableSolve logo are trademarks of Cormant Technologies Inc and these marks are registered in some jurisdictions. CableSolve is Patented in the US and UK.

Software specifications may be subject to change without notice; some features may be optional or require additional third party software or available at a later date. Cormant software is offered subject to Cormant's standard license agreement available in the software package or on request.

All other trademarks, service marks and company names used are owned by their respective owners and may be registered.

© 2002 - 2010 Cormant Technologies Inc. All rights reserved. CS100820 (CORE)

