

# Windows® 7 OSD and Application Migration With SCCM Expert's Self Service

## At a Glance

- Web-based Windows 7 OSD & application migration
- Automated role based migration
- Interactive appSurvey ensures end-users get the right software

## Customers Say

“We did not have a mechanism to take inventory on all our 7000 desktops and then synch applications on the old machine to the new one. This was turning out to be a 6 hour manual process, which we have automated with SCCM Expert's Self Service.”

– Rob Foerster, Global Infrastructure Team Lead, Celanese

## System Requirements

- Microsoft System Center Configuration Manager 2007
- MDT 2010 Update 1

## SCCM Expert Automates Microsoft® Windows® 7 OSD & Application Migration with Microsoft System Center Configuration Manager 2007

### Automated role based bare metal builds, re-imaging or replacement of computers from your web browser.

Enterprises today face key challenges in OS and application migration from legacy operating systems to Windows 7:

- Deploying applications during the build process
- Upgrading older applications automatically to current, supported versions
- Automating role based application deployment
- Ensuring end-users have the right applications after migration
- Understanding and reducing software usage

SCCM Expert's Self Service automates Windows 7 OS deployment and application migration by simplifying administrative processes, ensuring end-users are up and running quickly.

## Solution

SCCM Expert's Self Service deeply integrates with Microsoft System Center Configuration Manager 2007 to enable OS and application migration to Windows 7 by:

### Integrating Application Delivery at Build Time

Software installations occur during build time, drastically reducing delivery times.

- End-users and technicians request Windows 7 deployments through the Self Service portal
- Self Service assign roles dynamically based on user and computer criteria
- Users can select additional roles, if allowed
- Users complete the appSurvey, which surveys applications on their current computer, and further adds applications not covered by the above roles

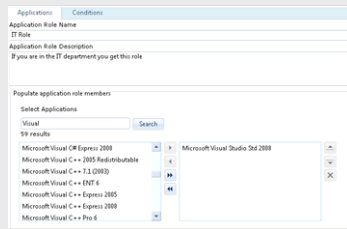
As System Center Configuration Manager deploys the OS, Self Service assigns the applications associated with the end-user and computer, in the given order.

### Using Role Based Application Provisioning

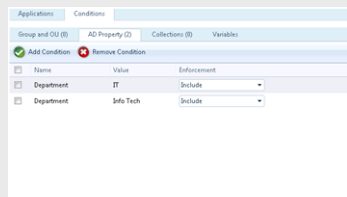
Roles are administrator defined groups of applications that can be applied to:

- OSD Task Sequences in the Self Service catalog
- Security groups or organizational units
- Active Directory® user properties
- Collections

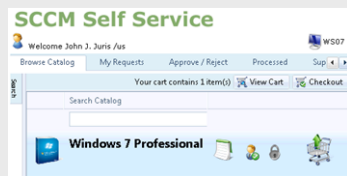
## Create Roles



## Apply Conditions



## User Shops



## Roles Detected



## Applications Installed



www.sccmexpert.com  
3205 Wenonah Avenue,  
Berwyn, Illinois, 60402  
Tel: +1 877 517 8435

SCCM Self Service dynamically calculates which roles apply to an end-user and computer based on these conditions.

## Software Interrogation With appSurvey

appSurvey helps ensure that end-users receive the software they need to do their job.

- Before migration appSurvey collects data on the applications currently deployed on the end-user's machine
- appSurvey intelligently suggests which applications the end-user should migrate based on usage patterns and administrator recommendations
- Administrators can modify the appSurvey and can either allow applications to migrate during the build process, start application migration, or provide end-users a URL to restore applications themselves post migration

SCCM Self Service delivers the applications that are authorized, compatible and utilized back to the end-user.

## Benefits

**Simplify Migration Processes** – Web-based migration for 3 build scenarios:

- Bare metal build
- Re-imaging current computer
- Replacing computer

**Make Migration Interactive** – End-users can re-image or upgrade their computer within defined administrative policies.

**Save Time and Money:**

- Quick migration through web portal
- No need to physically assign roles or applications to each computer
- Completely integrates with System Center Configuration Manager OSD, Task Sequences, and Computer Association features.
- Ensure end-users get the software they need

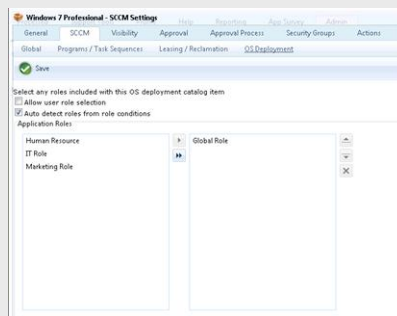


Figure 1: OSD Catalog Configurations

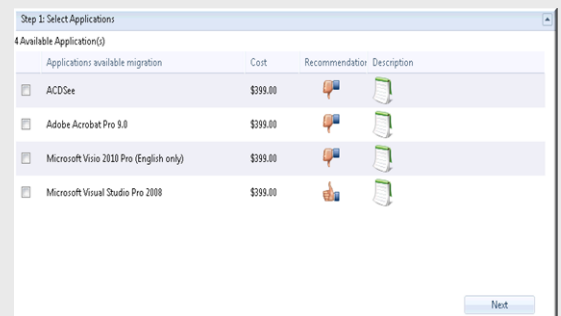


Figure 2: appSurvey Recommendations

Visit [www.sccmexpert.com](http://www.sccmexpert.com) or call +1 877 517 8435 to learn how SCCM Expert's Self Service can help you with Windows 7 OSD & application migration.