

# Mobile Marketing Console

ZOS Communications' Mobile Marketing Console provides a direct channel for the interactive delivery of location-based marketing campaigns from your PC.

The ZOS Mobile Marketing Console allows you to create geo-targeted campaigns via an easy to use web console and interface. After creating your marketing "event" you can; schedule the start of the campaign, select a location or geo-fenced area, and initiate the triggers that will start the delivery of the campaign. The console allows for a variety of content formats, including imagery, attachments and hyperlinks that are delivered into a ZOS enabled mobile application, or ZOS' universal inbox called zhiing.

If you are seeking to add geo relevancy to a marketing campaign ZOS Communications' Mobile Marketing Console can help to sharpen your targeted message.



- 1 Use your own application with easy plug-in tools
- 2 SDKs available for application development
- 3 White label applications available
- 4 Currently released on:  
iPhone  
Android  
Blackberry  
Windows  
Symbian/Nokia

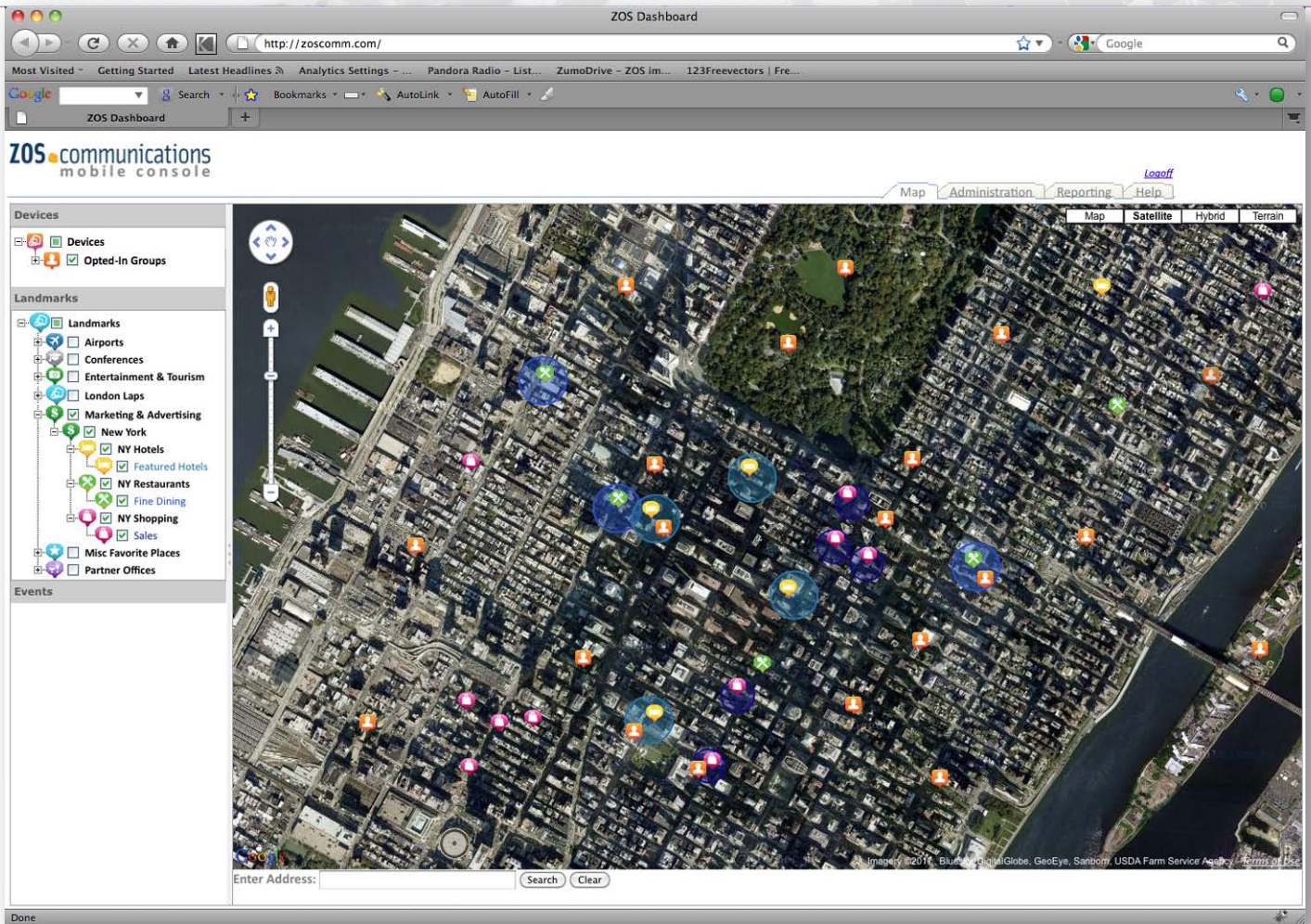
## Features

- Easily manage a database of devices, events and landmarks
- Create and edit groups to improve your target marketing campaigns
- Build and manage your events and event details like schedule, status, etc.
- Create and manage a message or campaign library
- Event triggering can be based on velocity, proximity to other devices, or the movement in and out of a geo-fenced area
- Deliver a variety of content formats including images, attachments, media and html with hyperlinks
- Deliver marketing message via sms, email, the ZOS zhiing application or your application's own zhiing inbox

## Benefits

- Quick and Easy Initiation and implementation of geo contextual marketing
- Differentiate your campaigns with a mobile presence and relevant messaging
- Deliver the right message and content to the right people in the right place
- Deliver specific content to specific devices or target audiences
- Deliver messages to users across mobile device platforms and across mobile service providers

# Mobile Marketing Console



## ZOS Communications Location Platform Capabilities

The ZOS Communications' Location Platform capabilities listed below, are enabled by the Mobile Marketing Console allowing for easy creation of events, delivery of content and grouping of marketing message recipients.

### 1. Event Creation

#### Geo-fencing

#### Triggering

- Velocity
- Proximity to other devices
- Entering or exiting geo-fencing area
- Other defined criteria or grouping

#### Message Delivery via:

- zhiing message (ZMS)
- zhiing client (Universal Inbox)
- sms
- email

#### Delivery of multiple content types including:

- Navigation points
- Images
- Documents
- Media
- HTML

### 2. Grouping

Group devices by user defined criteria

### 3. Dispatch

Combination of stand alone messaging and routing to individuals or groups

**Karen Morris**  
**Jonathan DeLong**  
**Tony Winterbauer**  
[www.zoscomm.com](http://www.zoscomm.com)

Chief Marketing Officer | 919 649 6976 | [kmorris@zoscomm.com](mailto:kmorris@zoscomm.com)  
EVP - Business Development | 805 636 2727 | [jdelong@zoscomm.com](mailto:jdelong@zoscomm.com)  
VP - Channel Sales | 805 453 6550 | [twinterbauer@zoscomm.com](mailto:twinterbauer@zoscomm.com)  
[www.zhiing.com](http://www.zhiing.com)