

# Compulogic SPi-4 Smart Process Meter

## *Web Enabled Process Meter*

The **Compulogic SPi-4** is a web enabled, flexible and simple to configure process meter. Featuring a large 4 digit LED display, on-board web server, email alerts and full remote access via the integral Ethernet interface.

The Integrated web server of the **Compulogic SPi-4** provides unprecedented flexibility and ease of programming via a standard web browser.

Additionally, meter readings can be viewed remotely via a web browser and email alerts can be generated when readings exceed user programmed thresholds.

Both XML and SNMP are also supported allowing configuration and remote reading using SNMP based network management systems. The sensor input is configurable for any range from 0-32mA or 0-10V

e.g. 4-20mA, 0-20mA, 9-15mA, 5-8V etc.

Any given input range may be programmed to display any corresponding user unit range from -9999 to +9999, direct or reverse acting and with automatic and floating decimal point.

A front panel push button enables the displayed value to be selectable between transducer input value, user units value, min value, max value or % full scale. Any or all of the displayed values are available simultaneously and remotely in a web browser or NMS.

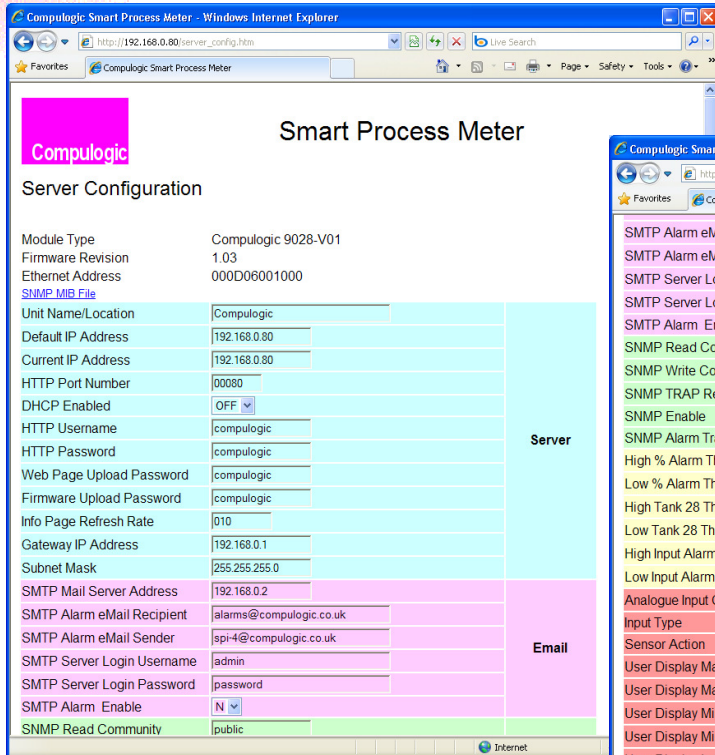


## Key Features

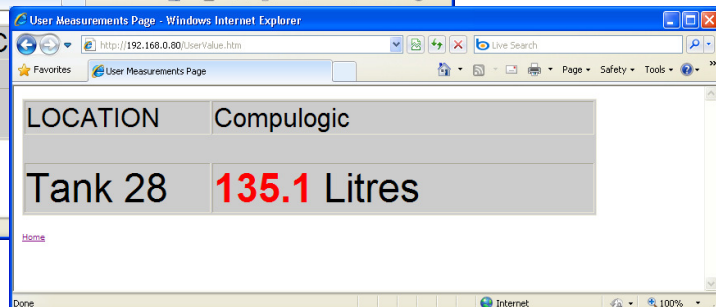
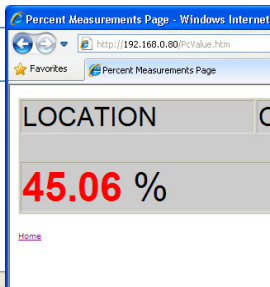
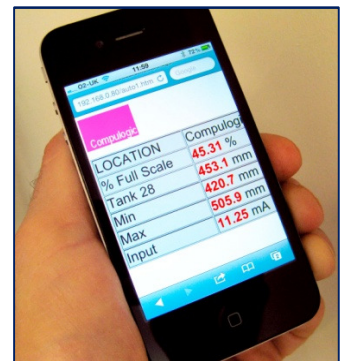
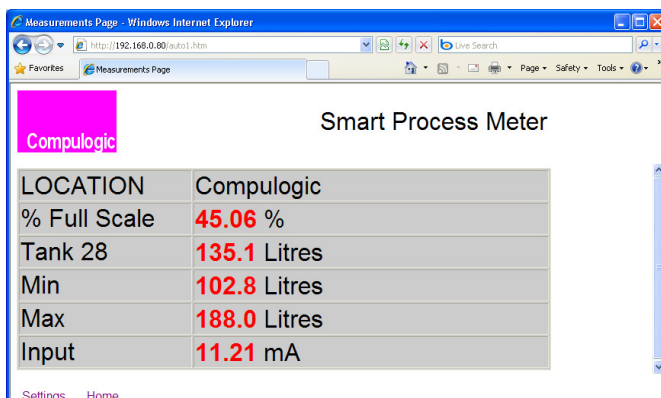
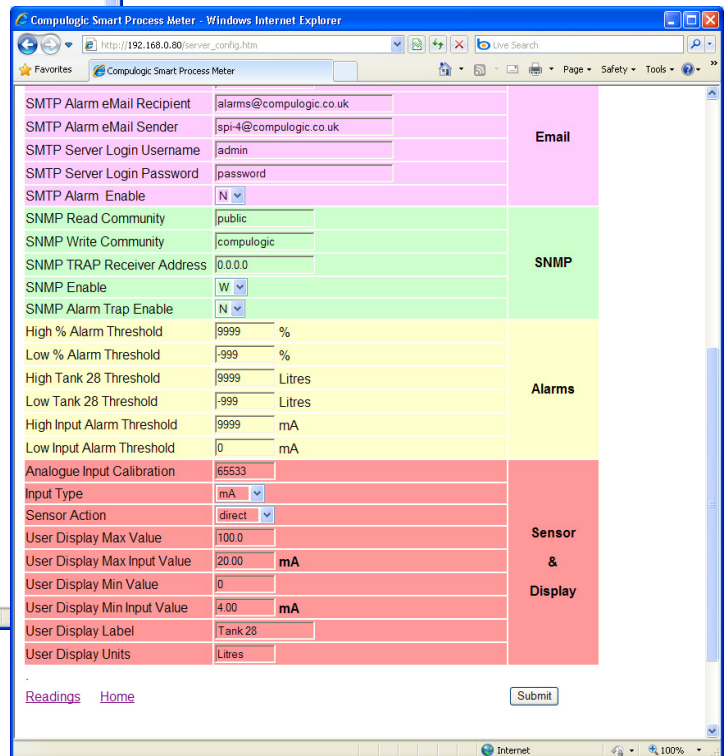
- On-board web server for easy configuration and remote monitoring
- Large, bright LED front panel display
- Local display selectable between input value, user units and % full scale
- 4-20mA, 0-20mA or any user defined transducer input span from 0-32mA
- 0-10V, 1-5V, 0-4V or any user defined transducer input span between 0-10V
- Programmable user units from -9999 to +9999, direct or reverse acting
- Automatic, floating decimal point
- Programmable email alarm alerts
- XML support allows readings to be directly imported into Excel etc.
- SNMP support allows config. and monitoring via a Network Management System
- Compact standard 1/8 DIN 48 X 96 mm mounting, only 30mm depth
- Automatic IP address configuration via DHCP

# Simple Configuration and Remote Access

The **SPI-4** web interface makes configuration straight forward and provides simple remote access.



Web browser configuration



Remote Measurements Display

## Specifications

### Functions

<b>Display</b>	4 Digit Red LED 13.2mm High
<b>Display Values</b>	% Full Scale, User Scale, Min Value, Max Value, Sensor input, and Supply Volts
<b>Display Range</b>	-9999 to +9999 with floating decimal point
<b>Transducer Input</b>	Any range within 0-32mA or 0-10V
<b>Accuracy</b>	0.1%
<b>Web Server</b>	Allows configuration and remote reading via web browser
<b>Email</b>	Sends email alarm alerts for input value, user value and % value
<b>SNMP</b>	V1 with traps function for alarm alerts

### Network

<b>Interface</b>	Ethernet 10baseT
<b>Protocols</b>	IP,UDP,TCP,TFTP,HTTP,ICMP,SNMP,SMTP,DHCP

### Mechanical

<b>Type</b>	1/8 DIN
<b>Connection</b>	3.5mm Plug-in screw terminal block
<b>Dimensions (Bezel)</b>	96mm x 48mm
<b>Dimensions (behind panel)</b>	92mm x 45mm x 30mm
<b>Maximum Panel Thickness</b>	15mm
<b>Weight</b>	150g

### Power Supply

<b>Voltage</b>	9-30VDC
<b>Current</b>	50 mA
<b>Sensor Output</b>	5V, 500mA Max.

### Environmental

<b>Operating Temperature</b>	0 - 50 °C
<b>Humidity</b>	0-95%RH, non-condensing

### Ordering Information

<b>Part Number</b>	PP9028-V01
<b>Description</b>	SPI-4 Smart Process Meter



Designed and made in the UK



Compulogic Limited  
Unit 6 Ryehills Lane  
West Haddon  
Northants NN6 7BX  
Tel: +44 (0)1788 510573  
Fax: +44 (0)1788 510078  
[sales@compulogic.co.uk](mailto:sales@compulogic.co.uk)  
[www.compulogic.co.uk](http://www.compulogic.co.uk)