

OBD-2 Developer's Toolkit and API

Prova's OBD-2 Developer's Toolkit opens up the data captured by Prova's OBD-2 Vehicle Health Monitors (VHMs) to third-party fleet management applications to enhance the management sophistication of those applications.

The toolkit shows developers how to address Prova's wireless VHMs and use that information to update vehicle usage records, manage vehicle maintenance schedules, track driver behavior, monitor fuel efficiency trends for the fleet and individual vehicles.

Developers who integrate Prova VHM data into their applications have the ability to resell Prova hardware solutions to their own customers as part of a complete package of fleet management tools.

The screenshot displays the OBD-2 Developer's Toolkit interface, which is divided into several sections:

- Tire Tread Depth:** A form with input fields for Right Front (1), Right Rear 1 (0.9), Left Front (0.9), and Left Rear 1 (0.9).
- Inspection Due Dates:** A section with dropdown menus for Safety Inspection (05/15/2009) and Emission Inspection (05/15/2009), along with 'Due' and 'Warning' indicators.
- Usage Parameters:** A table with columns for Accumulated (miles), Due in (miles), Alert (miles), and Remaining (miles). It lists parameters like Engine Oil, Air Filter, Tire Rotation, Front Brake Service, and Rear Brake Service.
- Continuous Monitors:** A section with status indicators for Misfire (Complete), Comprehensive (Complete), Fuel System (Complete), and Evaporative (Complete).
- Non Continuous Monitors:** A section with status indicators for O2 Sensor(s) (Complete), O2 Sensor Heater(s) (Complete), Catalyst (Not Complete), Heated Catalyst (Complete), A/C System (Complete), Secondary Air (Complete), and EGR (Not Complete).
- Vehicle Data Table:** A table with columns for Vehicle #, Location, Class, Year, Make, Model, Alert Type, and Alert Description. It lists vehicles like Avalanche, CR-V, Tracker, Trailblazer, and Yukon.

Use the developer's toolkit to calculate maintenance schedules, track engine health and create condition based alerts

The toolkit allows developers to access VHM data monitors for:

- Vehicle emissions status
- Fuel usage and efficiency
- idling times
- Engine diagnostics and DTC codes
- Real-time clock event registers
- Trip records (distance, time, mileage)
- Driver behavior monitors
- Average speed and max speed
- Records day, date and time-of-day usage
- VHM device removal alerts

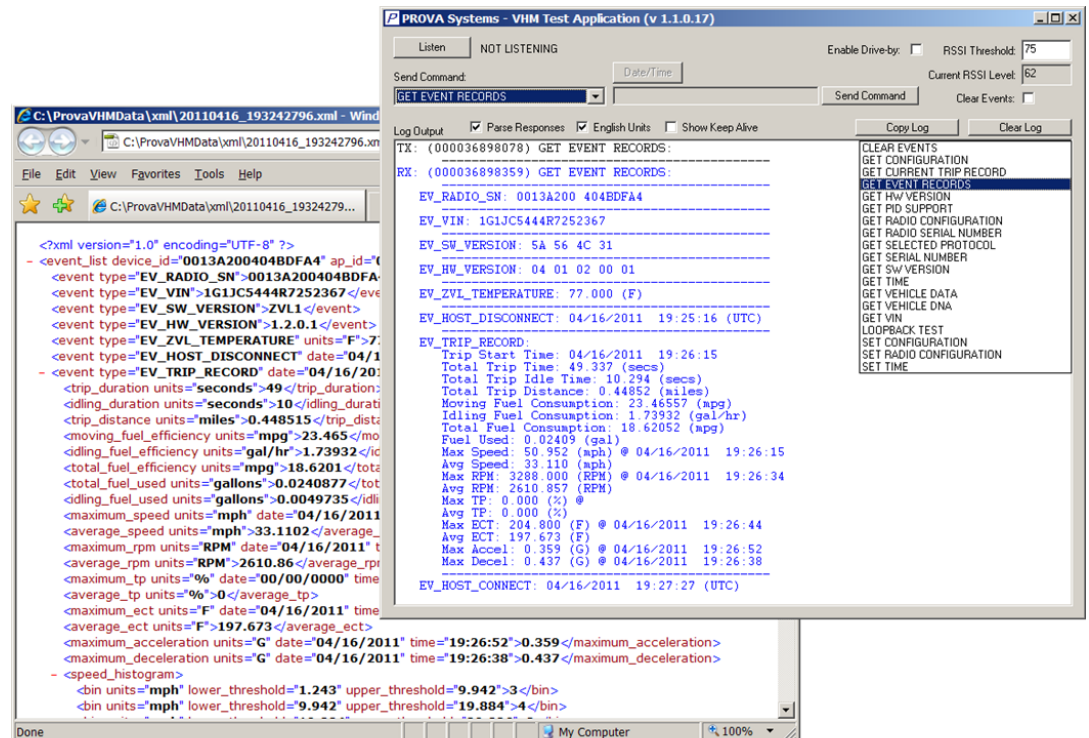
SPECIFICATIONS

DEVELOPER'S TOOLKIT INCLUDES:

- Power Requirements:
--12VDC @ 3.7mA typ (Idle - Quiescent Sleep)
12VDC @ 27mA avg typ (OBD Active - Logging)[1]
- Wireless: IEEE 802.15.4 Compliant : 2.4GHz : 250Kb/s Raw
60mW Transmit
Power : 12 Channel : 2dBi Chip Antenna
- User Interface: Power/ Status LED -> Red/ Yel/Grn
Buzzer -> Electro-Mech : 78dBA : 4KHz nom
- Environmental: -25C to +70C temp ambient
20% to 90% RH, Non-Condensing
- Firmware Upgrade Support: flashable program memory
- Enclosure: ABS plastic
- Enclosure dimensions: 1.8"W x 1.2"H x 1.4"D
- Weight: 1.3 oz
- 2 Prova Wireless OBD-2 Vehicle Health Monitors (VHM) which can be plugged into developer test vehicles or test equipment to generate vehicle performance data for inclusion in the application.
- Prova Wireless USB Access Point for communicating with the VHMs and collecting data from the devices. Plugs into a standard PC USB port.
- Prova VHM Fleet Manager application
- Prova Test application
- API documentation
- Prova proprietary data format to XML converter
- Optional drive-by Prova Access Point is not included but is available separately.



Prova wireless VHMs and USB Access Point



Prova Systems Developer's Toolkit Test Application and XML views

Prova Systems, LLC
10 Enterprise Drive
Carbondale, PA 18407
www.provasys.com

Phone: +1.646.820.1779
E-mail: sales@provasys.com

