

The logo features a green circular swoosh above the text. 'WRS' is in blue, 'COMPASS' is in green, and a green leaf-like shape is positioned between 'WRS' and 'COMPASS'.

WRS COMPASS

cleanNgreen Sustainability

Program

www.WRScompass.com



Index

About Us	P. 1
CleanNgree Program	P. 2
Walking the Walk	P. 3
Post-Design Services	P. 4
Construction & Remediation Policies	P. 5
Case Study: Sustainable Remediation	P. 6



About Us

During our quarter century in the environmental and construction industry, we have become known for our ability to provide efficient solutions to the wide-ranging environmental challenges of our customers. Our achievements have led to a reputation for providing outstanding customer service, while being recognized for maintaining high safety and accident prevention standards and an innovative sustainability program.

Having worked on over 11,000 projects estimated at over \$1.5 Billion in revenue, WRScompass possesses the financial stability and project experience to meet our customers needs.



cleanNgreen Program

Our Mission is to be the company of choice for customers and employees among environmental and construction companies by offering safe competitive and sustainable growth solutions.

Sustainability isn't just about greening the earth, it's about approaching every aspect of our work with a respectful mindset of people, profits, and planet.

With this mindset we developed our cleanNgreen service upgrades and standards. The cleanNgreen program allows our customers to achieve an optimal net environmental benefit on their remediation and construction projects.



Full Service Partner for your Environmental Needs

We strive to offer our customers a partner whom provides fully integrated, turn-key solutions for their environmental construction and remediation needs.

Our services include:

- Civil-Construction
- Water-Resource Management
- Demolition and Decommissioning
- Remedial Technologies
- Remedial Construction
- Environmental Management
- Sustainability

Knowledgeable Personnel

We have experienced and highly skilled professionals who understand the principles of soil mechanics and physics. They deliver practical solutions to geotechnical challenges.

National footprint

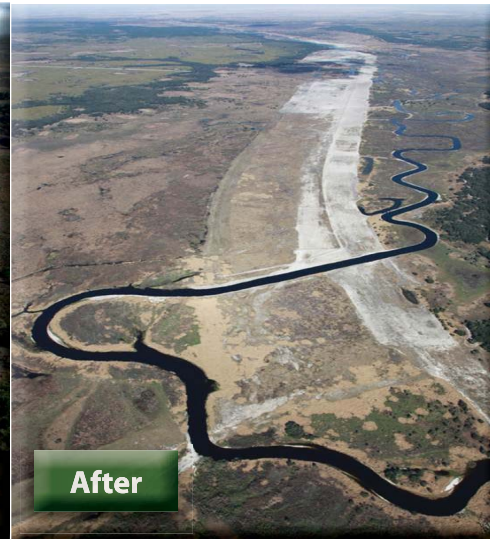
We have 16 offices nation-wide, combined with a workforce of over 500.

Equipment

We have our own fleet of yellow iron and Deep Soil Mixing equipment,



Before



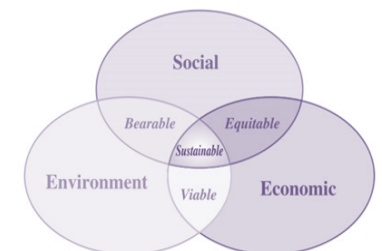
After



What is Sustainability?

The most eloquent definition was proffered by the Brundtland Commission of the United Nations on March 20, 1987. It simply states that, "sustainable development is development that meets the needs of the present without compromising the ability of future generations to meet their own needs."

At the 2005 World Summit it was noted that this requires the reconciliation of environmental, social and economic demands - the "three pillars" of sustainability. This view has been expressed as an illustration using three overlapping ellipses indicating that the three pillars of sustainability are not mutually exclusive and can be mutually reinforcing.





Leading the Way...

As an environmental contractor we always look for new ways to execute our work faster, safer and better, and in such a way that manifests lower costs to our clients with minimal impact to the environment.

WRScompass applies a measured, integrated approach, which includes health, safety, and environmental considerations which result in achieving optimal social, environmental, and economic benefits for our customers.

Post-Design Services

We apply sustainability concepts in post-design implementation. Whether applying beneficial reuse concepts, alternative fuel programs, materials assessments, or energy reduction concepts. Additionally we have developed tracking systems and sustainability reports to communicate the end results of your project's environmental performance. These results can be tailored to specific client requirements.

Award Winning Safety Program

- 18 years of beating the Industry Average in EMR performance
- Behavior-Based Safety program
- National Safety Council Occupational Excellence Award 2003-2010
- Georgia Department of Labor Award of Excellence 2004-2009

Implementing the Triple Bottom Line

People

Community gains through sustainable initiatives

- Less Pollution
- Local Hiring
- Minimizing Community Impact
- Safe Work Environment

Profits

Enhance value through project efficiencies

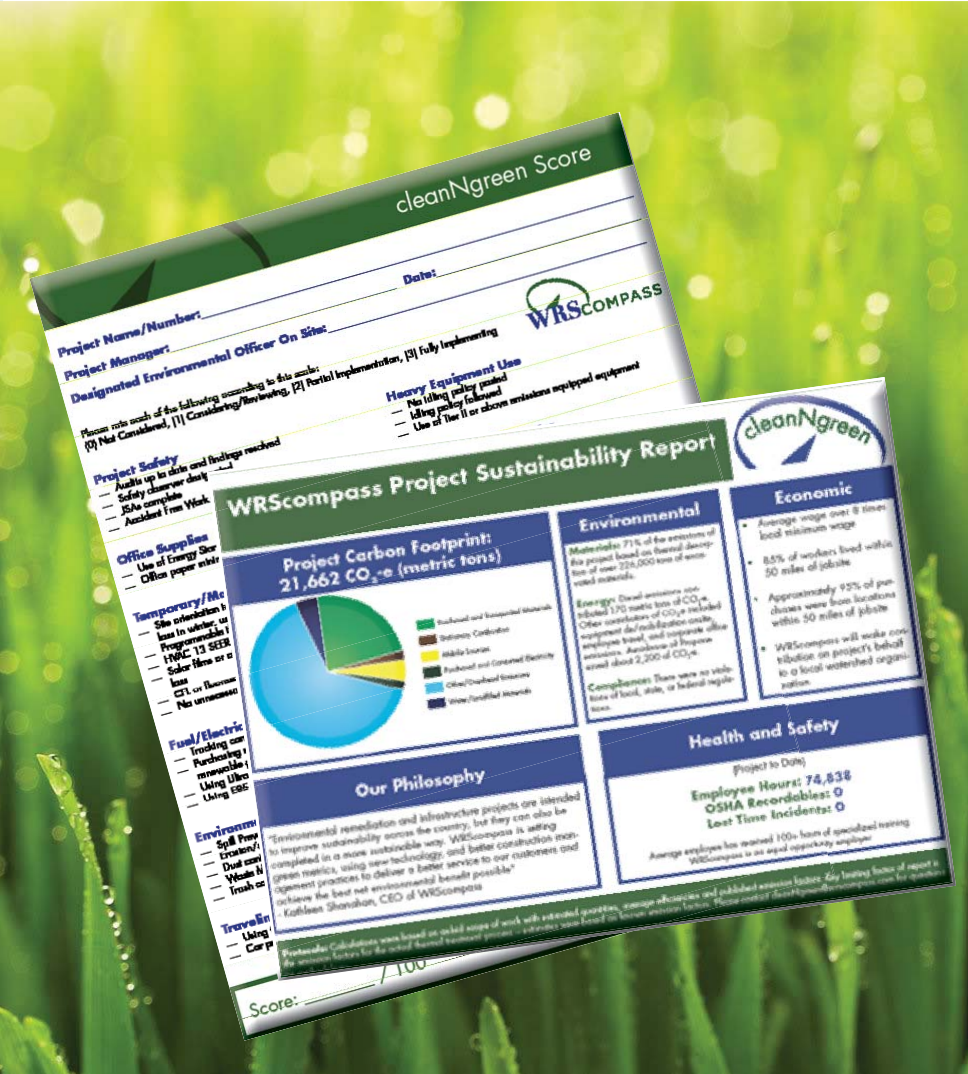
- Beneficial Reuse
- Electricity Reduction
- Fuel Switching
- Improved Customer Image
- Minimized Fuel Consumption
- Reduced Waste

Planet

Minimize environmental impact

- Project-Level Environmental Performance Audits
- Fuel-Switching Program
- Idle-Reduction Policies
- Beneficial Reuse and Recycling
- Purchase of Carbon Credits

We have over 25 years of experience in applying innovative solutions to large scale environmental projects



CleanGreen reports and post-design Services:

- Developing post-design sustainability goals
- Publishing project specific cleanGreen reports measuring:
 - direct emissions: stationary combustion sources, mobile equipment
 - indirect emissions: electricity consumption, purchased materials, landfill materials
 - other emission sources: mobilization to/from project site, workers' travel and lodging, corporate office emissions.
- Water footprint
- Obtaining carbon credits where applicable
- Obtaining wetland credits where applicable
- Working with non-profit partners to offset emissions to receive a "Carbon Neutral" project designation

We assess every project for reducing our environmental impact by means of recycling, beneficial reuse, or efficient practices



Construction and Remediation Policies

As with any industry, designing a solution into a program is best done at the beginning. This would take the form of remedial investigations through the feasibility study to the actual project design.

Our involvement typically begins when the design is completed. With this said, there are many post design opportunities to integrate sustainable features into post design work.

Case Study: In-Situ Stabilization and Sustainable Remediation

The Sanford Gasification Plant Site located in Sanford, Florida is currently the largest environmental In-Situ Stabilization project in the United States.

WRScompass operated two drill rigs stabilizing more than 142,000 cubic yards of impacted soil and diverting and rehabilitating more than 2,300 feet of creek bed. Together with the EPA, the site engineer and construction manager Natural Resource Technology Inc., and the Site Owner, we applied our cleanNgreen sustainable remediation program.



Innovative leaders in a wide array of remedial technology solutions, such as slurry walls, thermal desorption and Deep Soil Mixing

Highlights of our sustainable construction policies include:

- **Up to 100% of the steel and metals are recycled** with emphasis on reducing double-handling
- **Up to 100% of concrete is recycled** by generally reusing 90% as backfill reducing shipping emissions and costs
- **Committed to reduce our air emissions** by using newer, more fuel/emission efficient heavy equipment and through fuel switching and non-idling policies.
- **Strong partnerships nationwide** with universal and hazardous waste recyclers,
- **Use of Ultra-Low Sulfur Diesel (ULSD) or bio-diesel** in all heavy equipment where available, reducing the emissions of particulate matter by 13%, nitrogen oxides by 3%, carbon monoxide by 6% and hydrocarbons by 13%.
- **Idling reduction policy** – eliminating unnecessary greenhouse gas emissions, fuel, waste, equipment degradation and

We have experience in building innovative beneficial reuse systems which reduce environmental impact and mitigate costs.



Sanford Gasification Plant Site
Sanford, FL



Project Brief : Sanford Gasification Plant Site

- 142,000 cubic-yards in-situ stabilized soil
- Greater than 2,300 feet creek diverted and rehabilitated
- 10,000 tons of carbon dioxide avoided by substituting cement with blast furnace slag as the primary solidification agent
- Reduced greenhouse gas emissions by 20% using B20 Diesel
- 18 million gallons of impacted groundwater and surface water were treated and reused in the stabilization process
- 800 tons of organic material recycled and diverted from landfill
- Dramatically reduced project's carbon and water foot print through post design sustainable initiatives at no additional costs to client

Full Range of Environmental Services

Civil-Construction

- General Excavation & Grading
- Soil Amendments & Ground Improvements
- Subsurface Barrier Construction
- Poured & Precast-Concrete-Structure Placement
- Dewatering & Drainage Systems
- Pipe Rehabilitation

Water-Resource Management

- Water Resource Infrastructure
- Surface-Water & Wetlands
- Sediment Removal & Dredging

Demolition and Decommissioning

- Underground Piping/Structures Removal
- Selective Demolition/Plant Decontamination
- Structure Demolition
- Equipment Dismantling
- Investment Recovery
- Concrete Demolition & Crushing

Remedial Technologies

- Soil Mixing/Soil Stabilization
- Low-Temperature Thermal Treatment
- Groundwater Containment, Subsurface Water Barriers
- Soil Vapor Extraction Systems and Bioremediation
- Groundwater-Treatment Systems

Remedial Construction

- Construction Material Handling
- Landfill Capping & Construction
- On-site Waste Treatment
- Remediation Grading & Excavation

Environmental Services

- Program Management
- Natural Resources
- Site Investigation
- Remediation Design
- Disaster Response



Corporate Headquarters

221 Hobbs Street, Suite 108

Tampa, FL 33619

Phone: (813) 684-4400

Toll Free: (877) 854-4400

Fax: (813) 684-9177

www.wrscompass.com

16 Offices Nation Wide



KEY: ★ Corporate HQ ● Local Offices ● Equipment Center



To find out more about our cleanNgreen services, scan the barcode with your smartphone.