



KwikWork Business Process Framework for Rapid Deployment of EMC Documentum

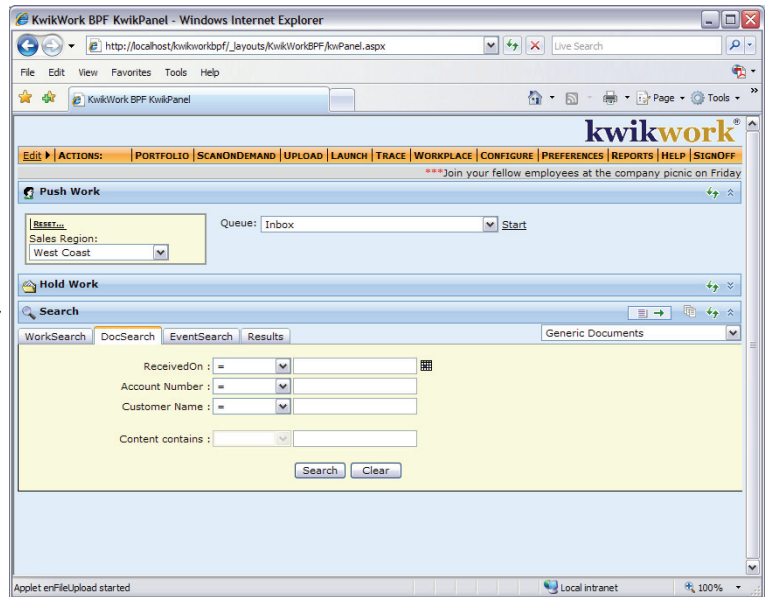
KwikWork® Business Process Framework (BPF) is designed to enable rapid deployment of EMC Documentum without the necessity of custom development. It is a highly-configurable, intuitive, role-based universal user interface that allows knowledge workers to significantly increase productivity.

Two Page UI

KwikWork BPF primarily consists of two highly-configurable Web pages; the KwikPanel, and the Work Item Handler (WIH). Administrator- and user-configurable, the KwikPanel provides tools for locating and displaying documents and work items, uploading or scanning documents, launching new work items, and integrating with line of business (LOB) applications. The WIH, also highly configurable, is the primary interface for viewing documents and work items, changing document and work item meta-properties, and completing work items.

The KwikPanel

The KwikPanel is the primary UI in KwikWork BPF. This is where the user begins work by finding a document or work item and displaying it in the WIH, or having the next available work item pushed to them via push work functionality. A configurable toolbar and a tab view Web part provide integration points to LOB applications and access to the myriad wizards for upload, launch, etc.



Features At-A-Glance

- Simple, intuitive, easy-to-use interface
- Role-based UI changes depending on user roles
- Presents exactly what a user needs to complete their work and nothing more
- Highly configurable and extensible
- Easily integrates with LOB applications to “content enable” them
- Simple to deploy at both department or enterprise level
- Microsoft SharePoint integration
- Common look-and-feel interface allows workers to easily move between business roles with little training
- Upload documents (drag-and-drop)
- Launch new workflow instances
- Ad-hoc search for both documents and work items
- Heads-down push mode pushes work items to user, eliminating “cherry picking”
- Temporarily place work items on hold
- Integrated diary feature for process collaboration
- Integrated interactive letter generator
- Bulk operations on documents (upload, modify meta-properties, export, fax, email)
- Digitally sign work items
- Automatic, dynamic association of documents with work items
- Highly configurable portfolio view

Template-Driven Wizards

In addition to the KwikPanel and the WIH, KwikWork includes a number of useful wizards based on administrator-defined templates. Available Wizards include the Upload Wizard, Launch Wizard, several bulk operations wizards, and the eMail Wizard.

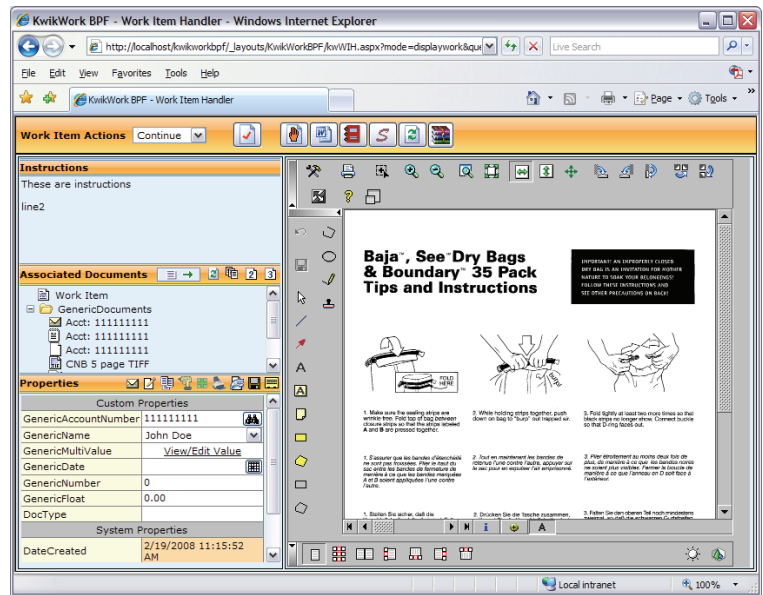
Templates are simple, administrator-defined forms that are used to prompt the user for the various meta-properties used by the wizard, e.g., to prompt for new document properties in the upload wizard. All templates share common functionality including configuration and support of:

- Database lookups to retrieve meta-property values from LOB databases
- Default values using simple but powerful KwikWork BPF Property Scripts
- Choice lists
- Copy meta-properties from a context object displayed in the WIH, avoiding double data entry and reducing mistakes
- Multi-value properties

The Work Item Handler

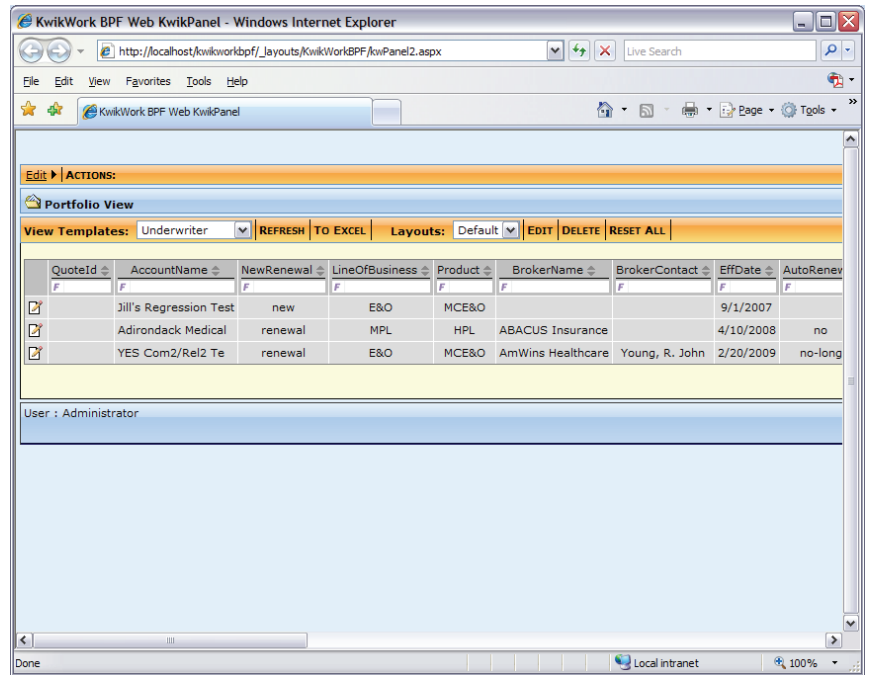
The Work Item Handler (WIH) is where the worker gets work done. On this page, the user finds tools for:

- Completing work items
- Placing work items on temporary hold
- Interactive letter generation
- Viewing and adding diary entries
- Digitally signing a work item
- Viewing instructions for completing the work item
- Viewing links for documents associated with the work item or document
- Editing work item and document properties
- Uploading or scanning new documents to the work item
- Launching new work items.
- Uploading documents and exchanging document or work item properties with an LOB application using drag and drop interfaces
- Viewing documents
- Reassembling documents (TIFF G4 and PDF)
- Redacting Documents (TIFF G4)



Portfolio View

KwikWork BPF includes a unique portfolio view tool that leverages powerful, pluggable data providers to retrieve and display data from any LOB application or the EMC Documentum system. Specifically, it displays a collection of work items for which a knowledge worker is responsible (e.g. To display the work items for all the customers for which an insurance underwriter is responsible). It can be configured with multiple templates, with each template using a different data provider to obtain, format, and display data from multiple LOB databases and/or the Documentum BPM library all via a simple, customizable interface. Users can configure any number of different custom views for each template, and each view can be further manipulated using multi-column sorting and Microsoft Excel-style filtering.



QuoteId	AccountName	NewRenewal	LineOfBusiness	Product	BrokerName	BrokerContact	EffDate	AutoRenew
	Jill's Regression Test	new	E&O	MCE&O			9/1/2007	
	Adirondack Medical	renewal	MPL	HPL	ABACUS Insurance		4/10/2008	no
	YES Com2/Rel2 Te	renewal	E&O	MCE&O	AmWins Healthcare	Young, R. John	2/20/2009	no-long

Microsoft Sharepoint Integration

The KwikWork BPF user interface is divided into several major areas of functionality called Web parts. These allow the user to customize the KwikWork interface by moving the Web parts around and adding/removing them from the KwikPanel. In addition, these Web parts can be deployed into your Microsoft SharePoint server farm to provide the same easy-to-use KwikWork BPF UI in a SharePoint site, adding instant access to your Documentum document and BPM repositories to your existing SharePoint team spaces.

Pluggable Storage Providers

KwikWork BPF uses pluggable software modules to communicate with the back end content and process (BPM) engines. This technology allows KwikWork to easily support multiple types of repositories. Both instances have exactly the same user interface, easing user training requirements and providing a common UI across your enterprise.

The KwikWork BPF ROI

Few things can provide a return on your investment faster than deploying KwikWork BPF into your enterprise. Its ease of use facilitates minimal user training, and allows workers to move freely between business roles. This allows for maximum utilization of your precious human resources while providing all the tools a knowledge worker needs to get the job done, all in one simple interface.

This, coupled with its ease of deployment, provides an expedited ROI based upon your KwikWork BPF investment.

KwikWork BPF Specifications

Operating Systems (server)	Windows 2003 Server
Prerequisite Software (server)	Microsoft .Net Runtime 3.5 Microsoft Web Services Enhancements 2.0 Microsoft SQL Server 2000 or 2005 Microsoft SQL Express 2005
Physical Hardware (server - minimum)	3GHZ single core Intel processor w/ 2GB RAM, 50GB hard disk
Operating Systems (client)	Windows XP Pro SP2 Windows Vista MAC OS X
Client Browser	Microsoft Internet Explorer 7 or higher Microsoft Internet Explorer 6 SP1 or higher Firefox 2.x or higher Apple Safari 3.1 or higher Java Runtime 1.4 SP12 or higher
Physical Hardware (client – minimum)	1GHZ single core processor w/ 1GB RAM, 50GB hard disk

**For more information,
email sales@enchoice.com
or call 888.824.6243**