

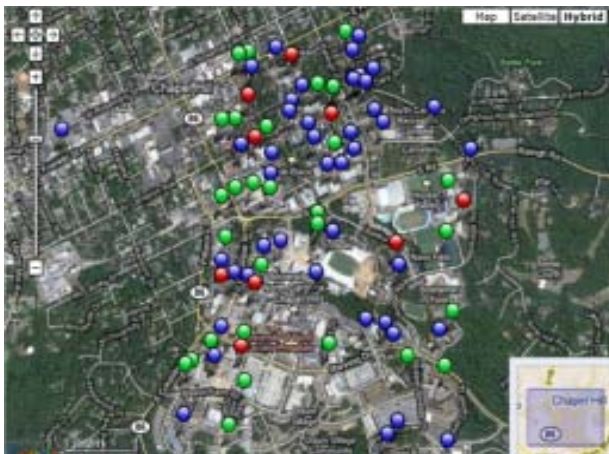
Take Control with Energy_Point™

Enterprise Energy Management

Energy_Point™ brings standardized building automation and energy management functionality to organizations with multiple facilities and disparate building controls systems.

Organizations with multiple facilities sometimes struggle to implement energy management best practices across their organization. With buildings of differing age and construction, it can be tough to implement standard processes and procedures.

More often than not, the controls systems used to manage HVAC, lighting, and other equipment vary from site to site. What's more, inconsistent installation and programming mean identical systems may work very differently. This makes it hard to standardize building operations. It also means it's nearly impossible to get an enterprise view of building performance.



Dashboard view of building portfolio with pushpins indicating status of existing alarms

Key Challenges

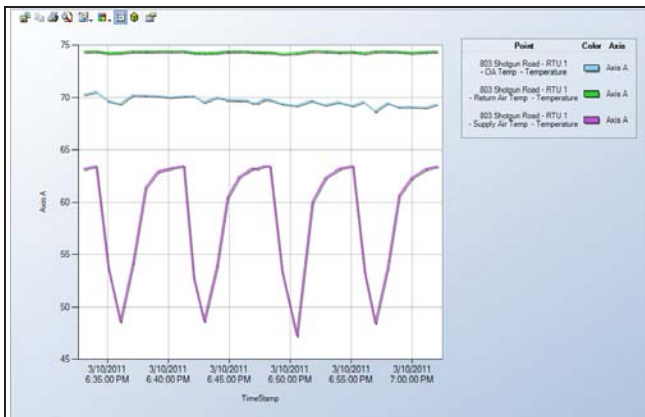
- **Multiple facilities with disparate building system controls platforms**
 - **Inability to standardize common tasks**
- **Alarms, scheduling & reporting vary by system**
 - **Islands of data that are difficult to aggregate**
- **Closed, proprietary user applications**

Energy_Point™ gives organizations with multiple facilities access to disparate building automation and energy management systems via a single web-based user interface, providing an enterprise-wide view of building operations and centralized control of building assets.

Enterprise visibility means giving customers a clear picture of building performance at each site in their portfolio without requiring them to jump from one system to another. Energy_Point™ aggregates data collected on-site into a single database, normalizing data labels and formats so they are consistent. This makes it easy to compare

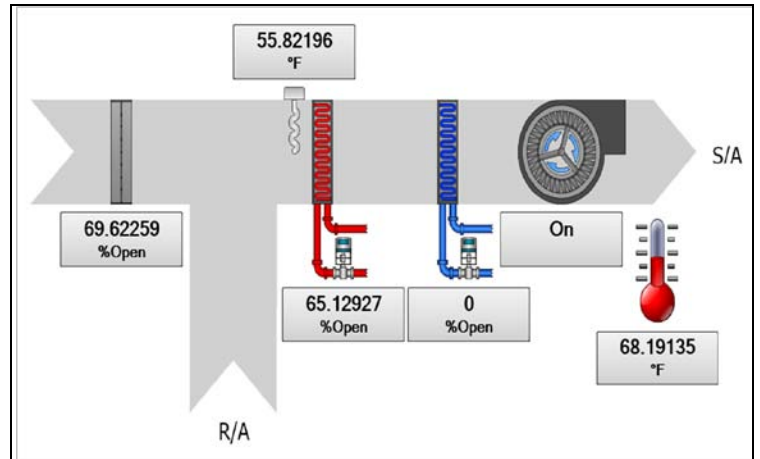
the performance of multiple facilities with one another, even though they have different building automation systems.

Energy_Point™ standardizes the way common energy and facility management tasks are performed. Users have access to equipment settings and schedules, and the ability to make adjustments as needed, from their Internet browser. They can also review alarms, run reports, and monitor any point on the system. This means facility management personnel only need to learn how to use one application to support any building in the customer's portfolio. They don't need to be familiar with a variety of different controls platforms.



Asset-level trend data indicates equipment efficiency

Energy_Point™ works with virtually any building automation or energy management system that supports remote connectivity, providing all of the advantages of a standardized controls platform, without the cost of replacing existing hardware.



Smart graphics display settings and sensor readings for all assets

Key Features

- Cloud-based enterprise energy management
- Centralized access to building data & controls
- Asset-level setpoint & schedule management
- Daily, weekly, and global scheduling
- Automated fault detection and alarming
- Enterprise view of alarms with drilldown to site-level details
- Asset-level equipment graphics with dynamically updated sensor readings
- Integrates with virtually any building automation or energy management platform
- Delivered via a Software as a Service (SaaS) model with no need for capital investment

For more information about Energy_Point, or any of Prenova's other enterprise energy management solutions, please visit: www.prenova.com.