



Disaster Resource Navigator™

Disaster Resource Software for the Broadcast Industry and Emergency Service Agencies

Be Prepared During the Next Disaster

Save Time and Effort

The Disaster Resource Navigator is a software application for the broadcast industry and other emergency response agencies. When radio and TV broadcasters are operating under FCC emergency operational rules, they can provide a critical role in furthering the safety of life and property during disaster situations -- including tornadoes, hurricanes, ice and snow storms, floods, widespread power failures, etc. -- by quickly informing the public about the post-disaster services that are available.

Rather than having piles of notes to sort through, this software application provides an organized method of keeping track of important information and provides quick navigation of local resources offering critical services such as shelters, food, water, ice, generators and fuel. With the Disaster Resource Navigator, this information is just a mouse click away saving valuable time for the broadcast staff, listeners and viewers.

Design Based on Real Life Scenario

In April 2011, tornadoes devastated many areas in Alabama with a record breaking 53 in one day throughout the state. Riverview Software Solutions is located in the northeastern section of the state where nine of the 53 caused severe damage.

A local FM station operated under FCC emergency broadcast rules for many days and fielded numerous phone calls from the general public, local businesses and other local service agencies. The FM station became a crucial communications hub that helped citizens find much needed supplies and provided the location of resources throughout the area.

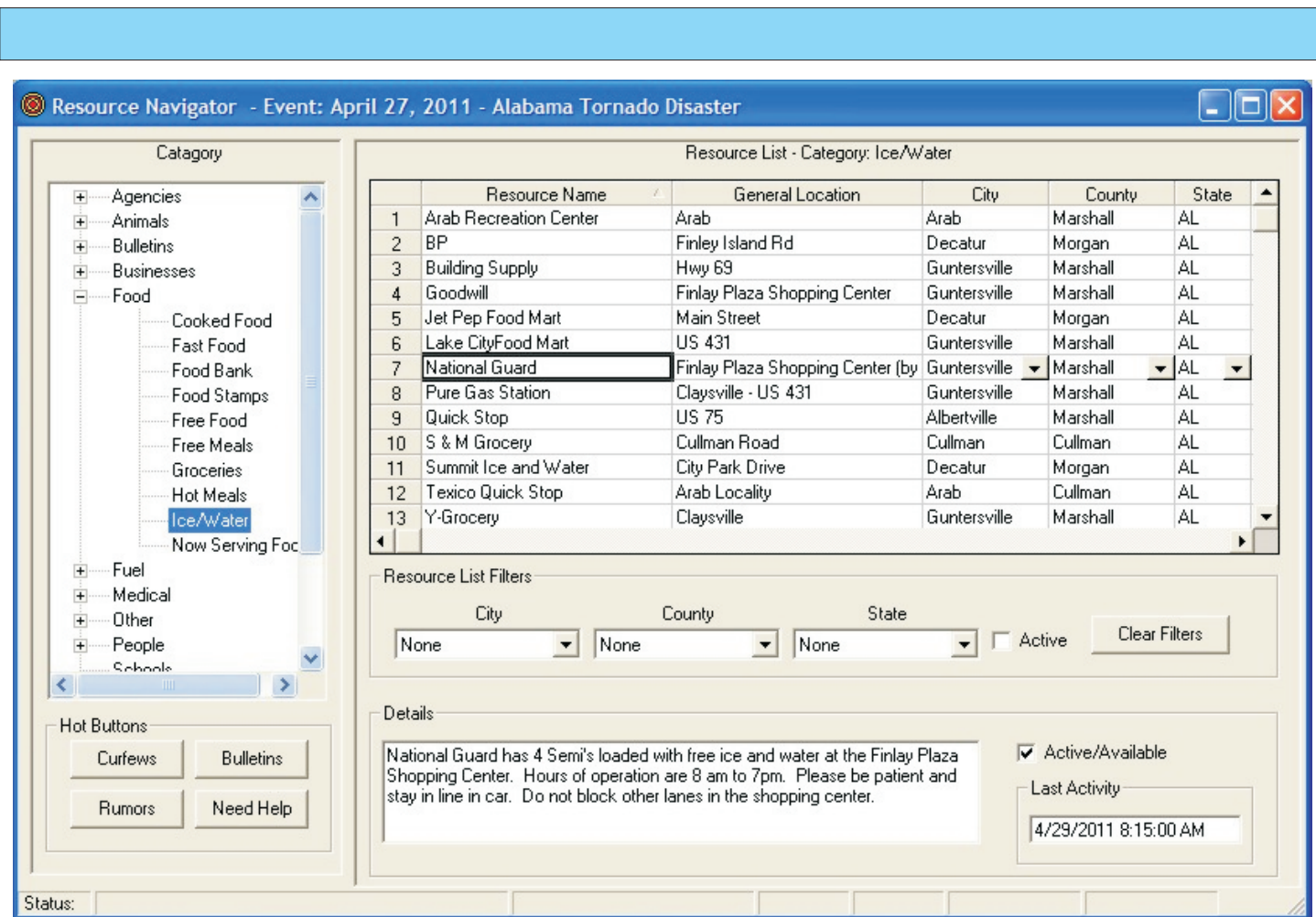
Riverview Software Solution's design team monitored this activity and discovered that after days of taking notes and relaying information, the station staff had so many notes and occasionally, finding the desired information for callers was starting to take a considerable amount of time. There had to be a better way so the Riverview team set out to develop this software application.

Full Featured and Easy To Use

- + Client interface that is intuitive for users of all levels of experience.
- + Minimal typing required. Only 3 data fields and 3 drop-down selection boxes.
- + Automatic data saving - no buttons to click, just enter the data "on the fly" and it will be saved automatically.
- + Ability to filter the resource list by city, county, state and if the resource is active/available.
- + Sort the resource list by city, county, state and if the resource is active/available.
- + Hot buttons for critical information.
- + Automatically time stamps the resource details to know when resources are created or updated.
- + Category lists with built in defaults - add new categories as needed.
- + Includes US state, county and city database* which can be setup for specific defaults and favorites - minimizing the number of items on the drop-down selection lists.
- + Activity logging to easily comply with FCC reporting requirements.
- + Software license allows two installations for users to simultaneously broadcast the information and add new resources at the same time.

* United States Postal Service Zip Code referenced.





Intuitive User Interface

The Disaster Resource Navigator screen provides a simple and intuitive interface for the user. Users can click on a category and the Resource List is instantly populated with all resources providing that particular service.

Users can also sort the Resource list in ascending order by clicking on a column header and then click again to revert the list back to descending order.

Additionally, Users can filter the list by selecting from the drop-down list boxes or which resources are active/available.

It's an incredible simple process to add a new resource, Users just need to scroll down to the bottom of the list and start typing on an empty row. It's that simple.

Hot buttons are provided for immediate access to the most critical information.

Riverview Software Solutions Also Offers...

- + Custom Software Development
- + Custom Video Services

System Requirements

The basic minimum requirements to run Disaster Resource Navigator are listed below:

- + Pentium III, 1 GHz processor or equivalent.
- + Windows XP or higher.
- + 1 GB of RAM.
- + 20 MB minimum hard disk space.
- + SVGA monitor.
- + CD-ROM Drive.
- + A printer supported by Windows.

Contact Information

Riverview Software Solutions, LLC
 81 Serenity Street
 Guntersville, AL 35976-8652

Phone: 256-486-3397

www.RiverviewSoftwareSolutions.com
 info@RiverviewSoftwareSolutions.com

All prices and specifications are subject to change without notice.
 Copyright 2011, Riverview Software Solutions, LLC. All rights reserved.