

# Fire Marshal

from *Cremation Systems*

**Fire Marshal** provides constant automated monitoring of the temperature in your retort stack area preventing potential fire hazards due to excess heat. Fire Marshal provides complete data acquisition of all case documentation during retort operation. Fire Marshal operates on-site or remotely to safely control and monitor your retort during all operating cycles.

- Automatic shut-down of the retort when stack area temperature reaches 500°F, preventing the occurrence of any potential fire in your crematorium
- Email alert to your smart phone and personal computer when stack area temperature reaches 450°F

- Audible alarm sounds when stack area temperature reaches 400°F
- Documentation of all cremation case information stored and sent to your business computer, making annual reporting requirements fast and easy

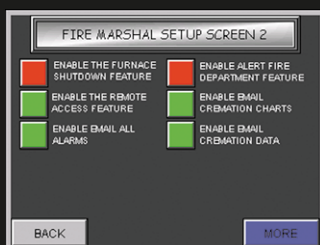
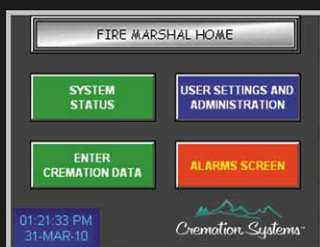
**Fire Marshal** can be installed on **ALL** types of cremation retorts.



*Cremation Systems* is pleased to offer the only crematorium monitoring technology available.

With more than 45 years of industrial furnace building experience, Armil/CFS manufactures cremators with the latest advancements in combustion, control and refractory technology.

**Fire Marshal** comes standard on all CFS-2300 cremation chambers.



**Fire Marshal:**

**The only name in crematorium monitoring technology**



**Cremation Systems™**

Division of Armil/CFS, Inc.

15660 South LaSalle Street  
South Holland, IL 60473

708-339-6810

Fax: 708-339-0517

[www.cremsys.com](http://www.cremsys.com)

[info@cremsys.com](mailto:info@cremsys.com)

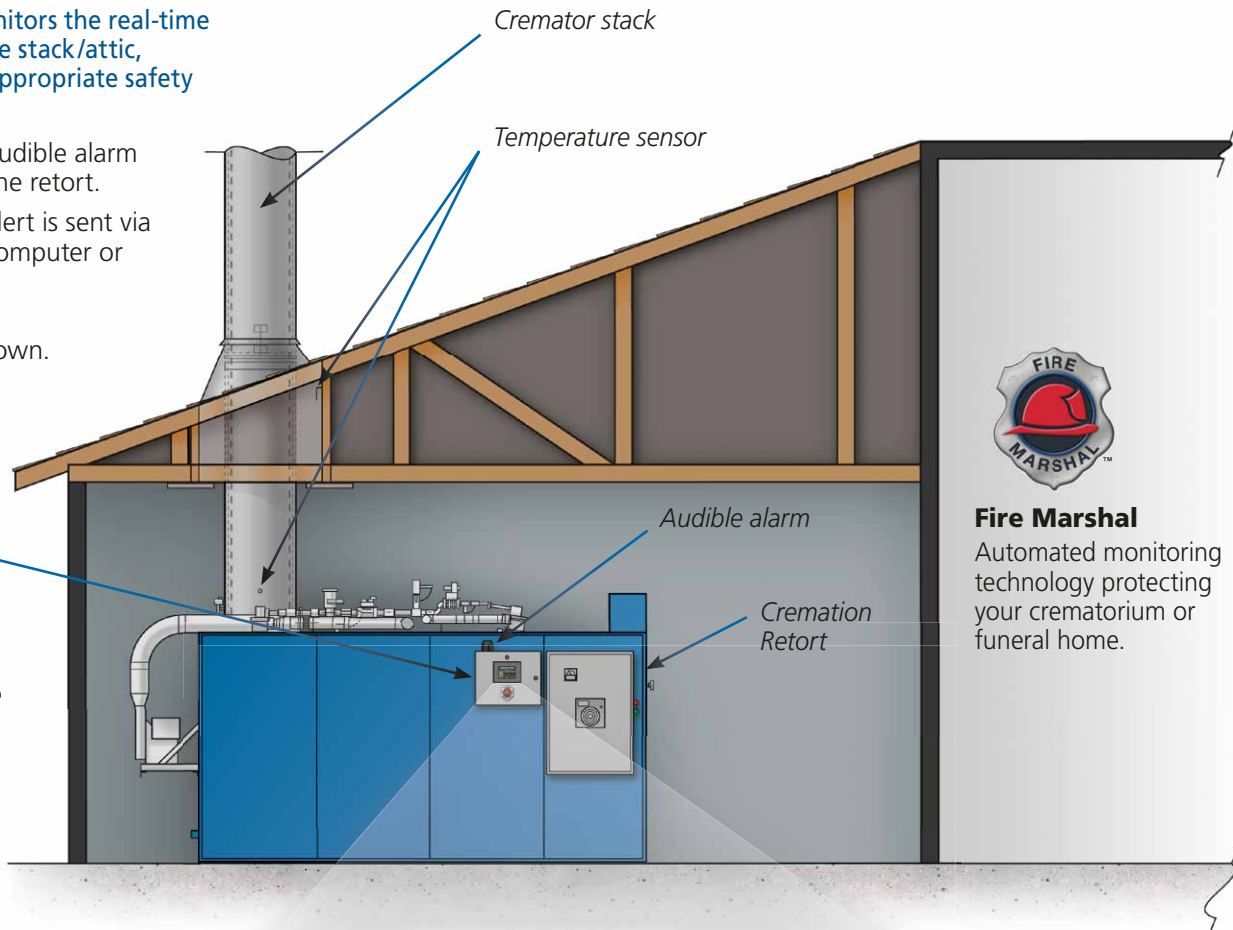
© 2010, Cremation Systems

# Fire Marshal from *Cremation Systems*

**Fire Marshal** monitors the real-time temperature of the stack/attic, and initiates the appropriate safety procedure:

- ! At **400°F**, an audible alarm is sounded at the retort.
- ! At **450°F**, an alert is sent via email to your computer or smart phone.
- ! At **500°F**, your retort is shut down.

The *Fire Marshal* control panel can be installed in any convenient location on the retort or within the crematorium.



**Fire Marshal**  
Automated monitoring technology protecting your crematorium or funeral home.



**Fire Marshal** includes the most comprehensive features available, in an intuitive, user-friendly touch screen interface.



**Data Marshal** stores all relevant cremation cycle information, including decedent name, weight, time, afterburner temperature, alarm notification and charting data.



**Video Marshal** offers live monitoring from the crematorium to a remote viewing station via internet, PC or a smart phone.

**SYSTEM STATUS**

ATTIC IS OVER TEMPERATURE

|                    |                  |                  |
|--------------------|------------------|------------------|
| AFTERBURNER ON     | AFTERBURNER TEMP | MAIN BURNER TEMP |
| MAIN BURNER ON     | 1649 F           | 714 F            |
| THE STACK IS CLEAR | STACK TEMP       | ATTIC TEMP       |
|                    | 1847 F           | 498 F            |

BACK TRENDING HOME

**TRENDING CHART FOR JOHN DOE, 185 LBS, CODE C2213**

2000  
1500  
1000  
500  
0

01:22 PM 31-03-18 01:42 PM 31-03-18

— AFTERBURNER — MAIN BURNER

BACK HOME

**USER SETTINGS AND ADMIN**

BRIGHTNESS: N/A

SET DATE AND TIME

ENABLE DISABLE FEATURES

HMI REV: 1.0 PLC REV: 0.0

UPDATE KEY CODE

BACK HOME

**ALARM SCREEN**

Alarm History Total of 5 Alarms

| Entry No | Alarm No | Message                      |
|----------|----------|------------------------------|
| 1        | 3        | STACK IS OVER TEMPERATURE    |
| 2        | 7        | SAFETY LIMITS HAVE BEEN LOST |
| 3        | 10       | THE FIRE ALARM IS ACTIVATED  |
| 4        | 6        | SMOKE IS DETECTED IN THE STP |
| 5        | 4        | FURNACE SHUTDOWN             |

Alarm History

BACK ALARM SILENCE ALARM RESET HOME

**Fire Marshal's Comprehensive Features**  
Include data retrieval and storage, on-site or remote video monitoring

**Note:** Some Fire Marshal features require phone, internet and/or wireless connectivity.