

SURVIVE-A-STORM SHELTERS™

www.survive-a-storm.com | 1-888-360-1492

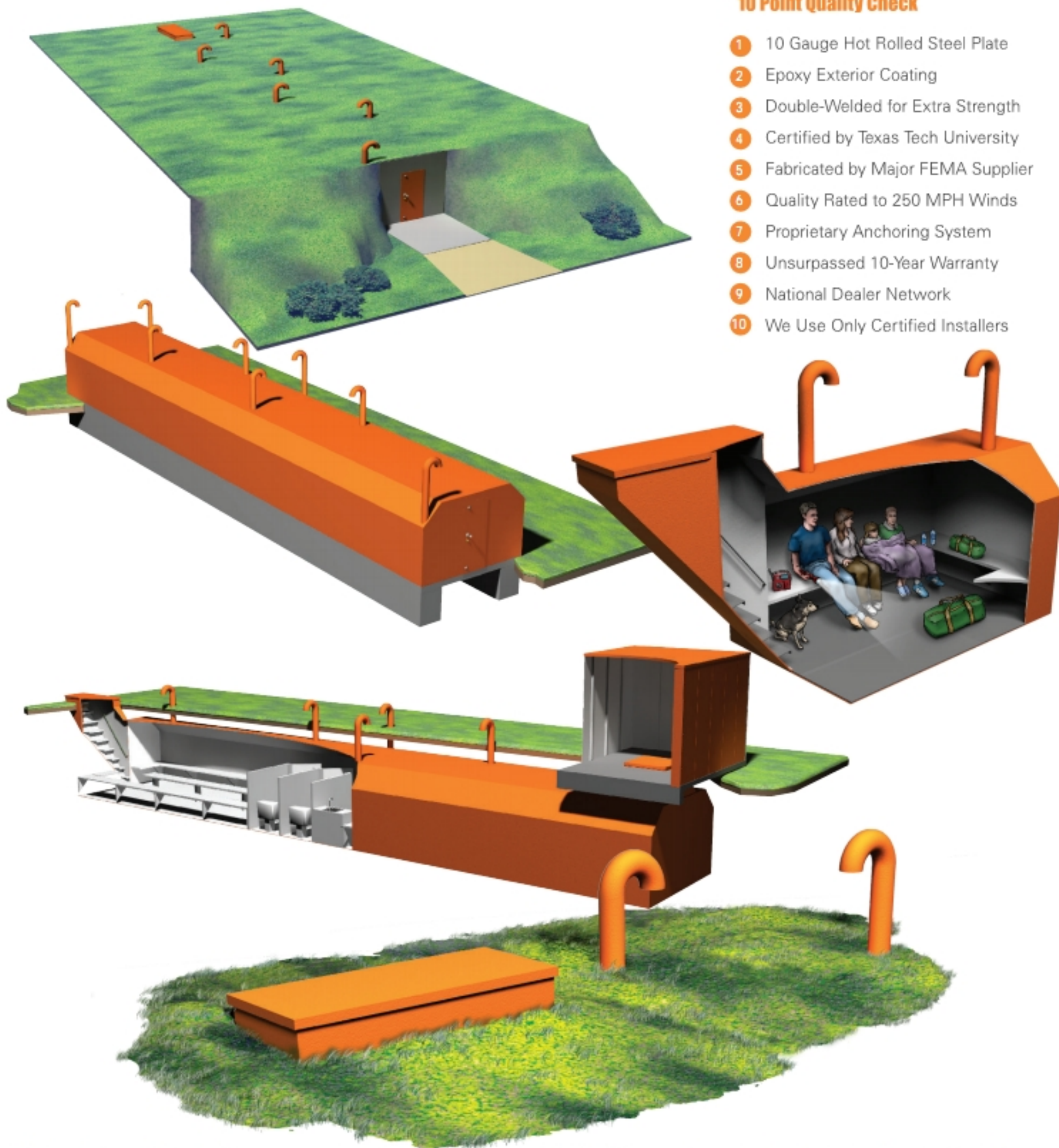


A Decade Working with FEMA

Survive-a-Storm Shelters is a division of Harbor Homes, LLC which holds a current, active \$153 million contract with DHS/FEMA to manufacture and deploy disaster housing in the event of major natural disasters. We have experience building seismic & hurricane rated structures in the U.S., Caribbean, and Africa.

10 Point Quality Check

- 1 10 Gauge Hot Rolled Steel Plate
- 2 Epoxy Exterior Coating
- 3 Double-Welded for Extra Strength
- 4 Certified by Texas Tech University
- 5 Fabricated by Major FEMA Supplier
- 6 Quality Rated to 250 MPH Winds
- 7 Proprietary Anchoring System
- 8 Unsurpassed 10-Year Warranty
- 9 National Dealer Network
- 10 We Use Only Certified Installers



Survive-a-Storm Shelters holds a current, active \$153 million contract with FEMA/DHS to provide disaster housing in the aftermath of natural disasters. Our company has a rapidly expanding network of installers and factory representatives throughout Tornado Alley, we are continually adding new product innovations to the storm shelter industry.

We are one of the few companies in the United States with the requisite experience and capability to meet your community storm shelter needs, and we have a track record of working with the U.S. government as well as foreign governments, NGOs, and major corporations to meet shelter objectives. We would be delighted to develop custom plans per your specifications.

www.survive-a-storm.com | 1-888-360-1492

Your schools and community buildings may not be safe!

In primary and secondary schools, tornado drills typically teach students to go to a makeshift storm shelter, interior corridors, storage rooms, restrooms or other interior rooms. The students are told to sit on the floor and place their heads between their knees.

But are these designated areas really safe? At one elementary school, the designated storm shelter area was stronger than a typical non-reinforced concrete block wall corridor. The roof structure consisted of steel bar joists and metal roof deck; the masonry walls received additional support from a light steel frame — and the corridor was still destroyed by the storm. One wall collapsed, and the other was severely damaged. The roof was gone, and debris was everywhere, most notably in the center of the corridor where children typically would have been sent during a storm.

School corridors typically have construction features that make them unacceptable as storm shelters. The walls usually are not constructed to resist winds from a tornado because stud walls or non-reinforced masonry units are used. The roof structure over the corridor can be lightweight and may be prone to collapse in a severe wind. The roof also may extend to other areas of the building, such as a classroom. If the roof collapses over the adjacent space, it is likely to peel back over the corridor, exposing it and making it unsafe.

(Source: http://www.fema.gov/plan/prevent/saferoom/article_shltrstrm.shtm)

Nursing Homes

Survive-a-Storm Shelters specializes in ensuring that even those who happen to be mobility impaired are protected from the storm.

We can develop custom shelters to meet these special needs.

Day Care Centers

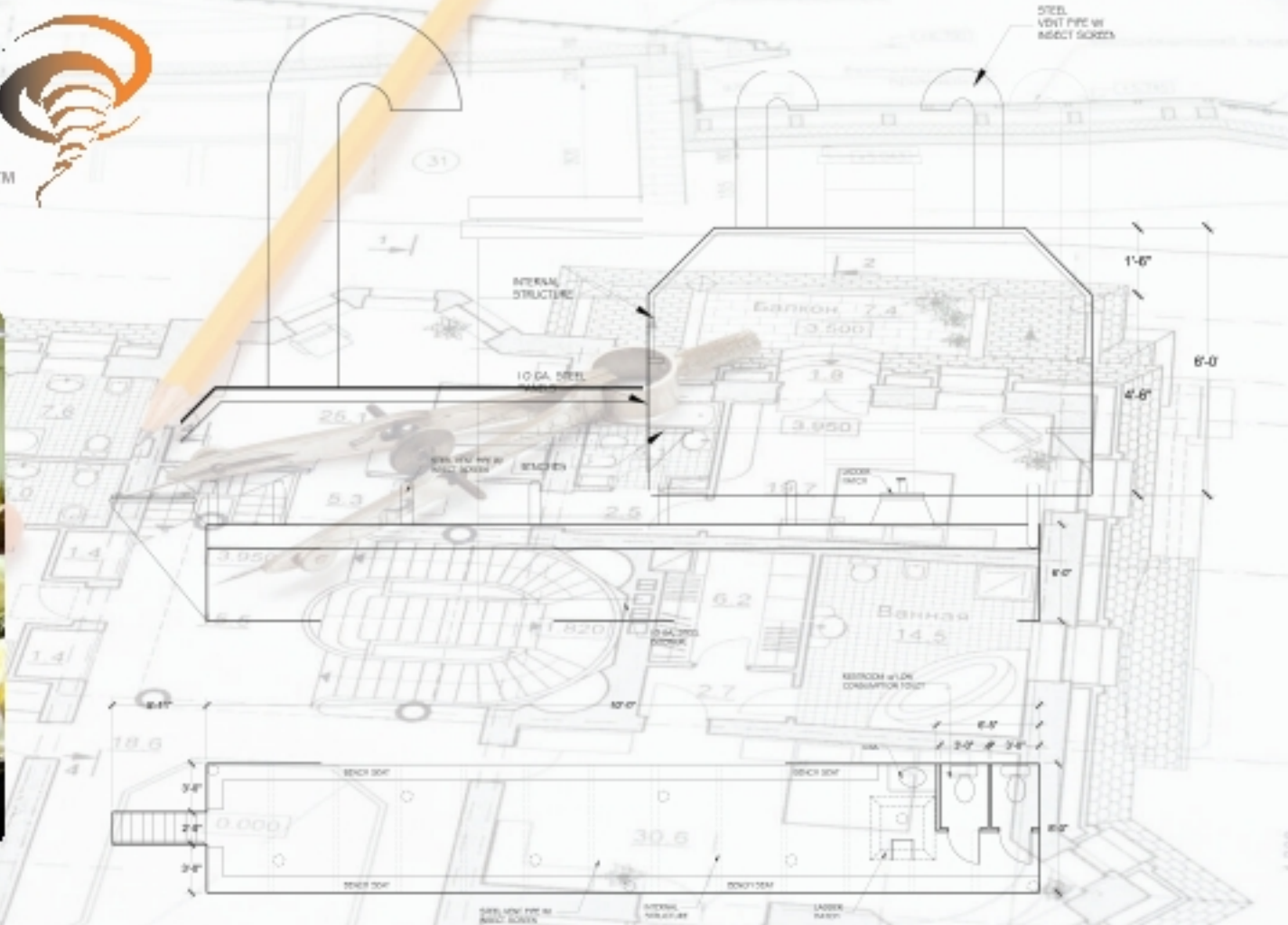
There is nothing more heart wrenching than stories of young children being killed or injured in a natural disaster. We can work with your community to ensure that this doesn't happen by designing and placing community storm shelters.

Public Safety Facilities

Your community relies upon its first responders to assist in the aftermath of serious storms and other natural disasters. Ensure that first responders do not become victims themselves by installing community storm shelters in public safety facilities.

Condominium Communities

Condominium communities are perfect candidates for underground storm shelters. Enhance the safety of your community--and the attractiveness of your property--by adding underground storm shelters to keep your residents safe. Storm shelters are a sensible solution to your community's needs.



Community Storm Shelters

As a community leader you have a special obligation to protect the most vulnerable members of your community. Our Survive-a-Storm handicap accessible storm shelters help you do just that.



www.survive-a-storm.com
1-888-360-1492

