



About Activu

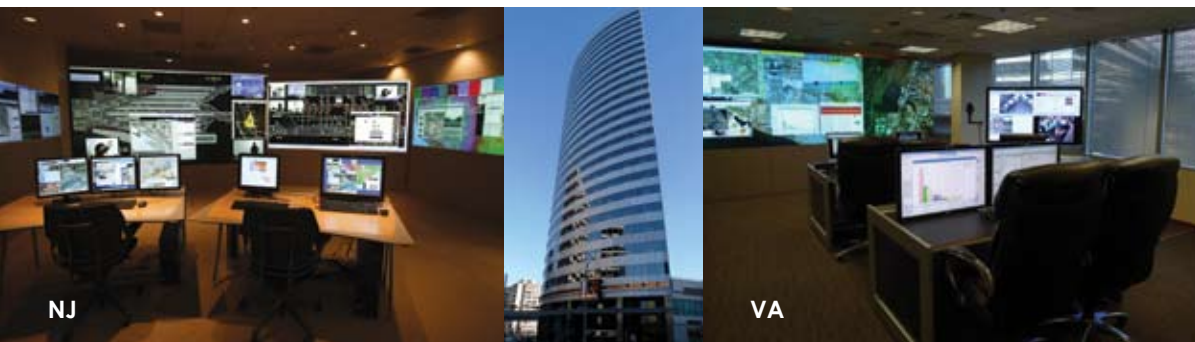
Activu Corporation is an Information Technology and Services company delivering true end-to-end networked visualization and collaboration solutions for mission-critical command and control environments. Activu designs, builds, deploys, and supports full turnkey, net-centric, software-based solutions to help organizations improve their collaborative information sharing and decision making capabilities.

Smart Solutions for Smart Organizations



LARGE-SCALE VISUALIZATION AND COLLABORATION SOLUTIONS *for Command and Control*

Smart Solutions for Smart Organizations



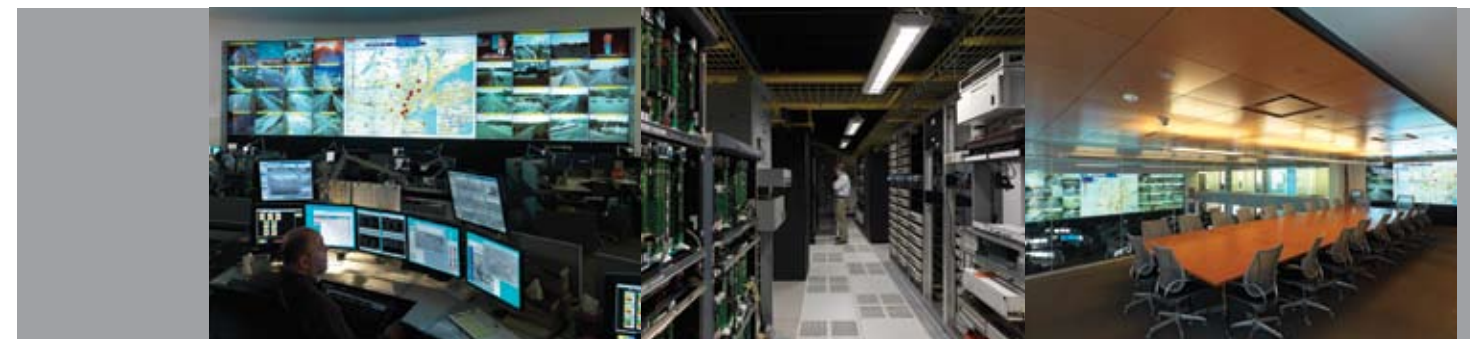
Activu Corporation
2 Stewart Court
Denville, NJ 07834

Activu Federal Solutions Group
1100 Wilson Blvd, Suite 1225
Arlington, VA 22209

1-888-activu-1 | info@activu.com | www.activu.com



Copyright © 2010 Activu Corporation.
All Rights Reserved. All trademarks and registered trademarks are the property of their respective owners.



Mission-Critical Command and Control

Activu large-scale visualization and collaboration solutions harness the power of the network for real-time access to mission-critical data. Our solutions are powered by our market-leading Activu® control room software and use commercial-off-the-shelf (COTS) hardware from global leaders in display and server technology.

Activu Corporation designs, builds, and supports visualization solutions that help clients improve situational awareness for optimized decision making and collaboration across the organization, regardless of physical location.

Defense & Intelligence Community

Organizations rely on accurate data to make critical, time-sensitive decisions. Activu is integrated into the enterprise architecture and joined to the Domain, enabling organizations to form a virtual team — sharing, annotating, and analyzing real-time visual information across the network — to develop an Operational Picture, improve Situational Awareness and overall mission posture.

Homeland Security — Civilian Agencies — Emergency Management

When public safety is at risk, homeland security agencies, police, fire, and emergency response units rely on the flexibility of Activu to reduce response time. When conditions and resources are in constant flux, a distributed content management system enables multiple components to dynamically share visual information for improved Situational Awareness and mission posture.

Utilities and Energy

Activu provides ease-of-use and customization for effective grid management. With Activu, users can properly visualize information and collaborate across the entire organization. The results are better, faster decision making, reducing service interruptions and the associated service/safety impacts. Activu meets NERC CIP reliability requirements.

Transit and Transportation

Effectively manage traffic incidents and reduce congestion for improved safety and response time. With Activu, organizations gain situational awareness with the ability to aggregate content from any source connected to the network including traffic and transit applications, SCADA, video streams, web pages, maps, satellite and cable news feeds, to dynamically connect individuals and teams.

Turn Information into Knowledge

A Powerful, Open, and Scalable Network-based Software Solution

In mission-critical environments, organizations invest in a range of systems that gather information vital to conducting successful operations. To gain the maximum benefit, these organizations need the ability to turn information into knowledge which can be shared and communicated in real-time, across the organization. A dynamic visualization and collaboration solution is a critical tool for sharing and annotating real-time data, making it available from the command center to the conference room and into the field.

Dynamically Access, Aggregate, and Share Information

Across the Enterprise

with **Activu Network-based Software Solutions**

Most of the visualization solutions on the market are based on hard-wire cable. Anytime you want to add something to the grid, you need to bring in a big crew, pull wires, put in video switches, and control boxes. It's a huge expense which involves equipment and intensive labor costs. **What we love about the Activu solution is that when you need to add something, because it's an IP-based solution, you just put it on the subnet LAN and you're done.**

Mike McMullen
Security Operations, Lead Systems Analyst, Port of Long Beach



Net-Centric

Leverage Existing Network Resources, Reduce Operational Costs

Advances in IP technology have enabled organizations to efficiently grow their Enterprise infrastructures. Maintaining a single network is more cost-effective, reducing overall operating, management and maintenance costs. The flexibility to apply the same business rules, which can be configured and managed from a single location, results in more consistent operations and network integrity. The Activu solution becomes an integral part of your managed network, creating a true collaborative environment, allowing users to pull data from network sources and share them within and outside of the command center.

Cost Effective: Leverage existing network infrastructure for increased network efficiency to reduce the total cost of ownership (TCO), while improving return on investment (ROI).

Highly-Scalable: Activu provides future ease-of-growth within your Enterprise system. Add new operators, displays, information sources and locations by connecting them through the network.

Open & Dynamic Visual Layer: Computer sources (most operating systems), IP video cameras, encoders, servers, streaming media and other network accessible sources can be aggregated, displayed, controlled and shared across the network.

Network Efficiency: Activu uses a highly efficient visual data transport method that keeps Activu network traffic to a minimum.

Highly-Secure

Activu operates on Corporate and Government networks and has been successfully installed in various security configurations. We work closely with clients to ensure all technical security matters are addressed and accreditations are obtained.

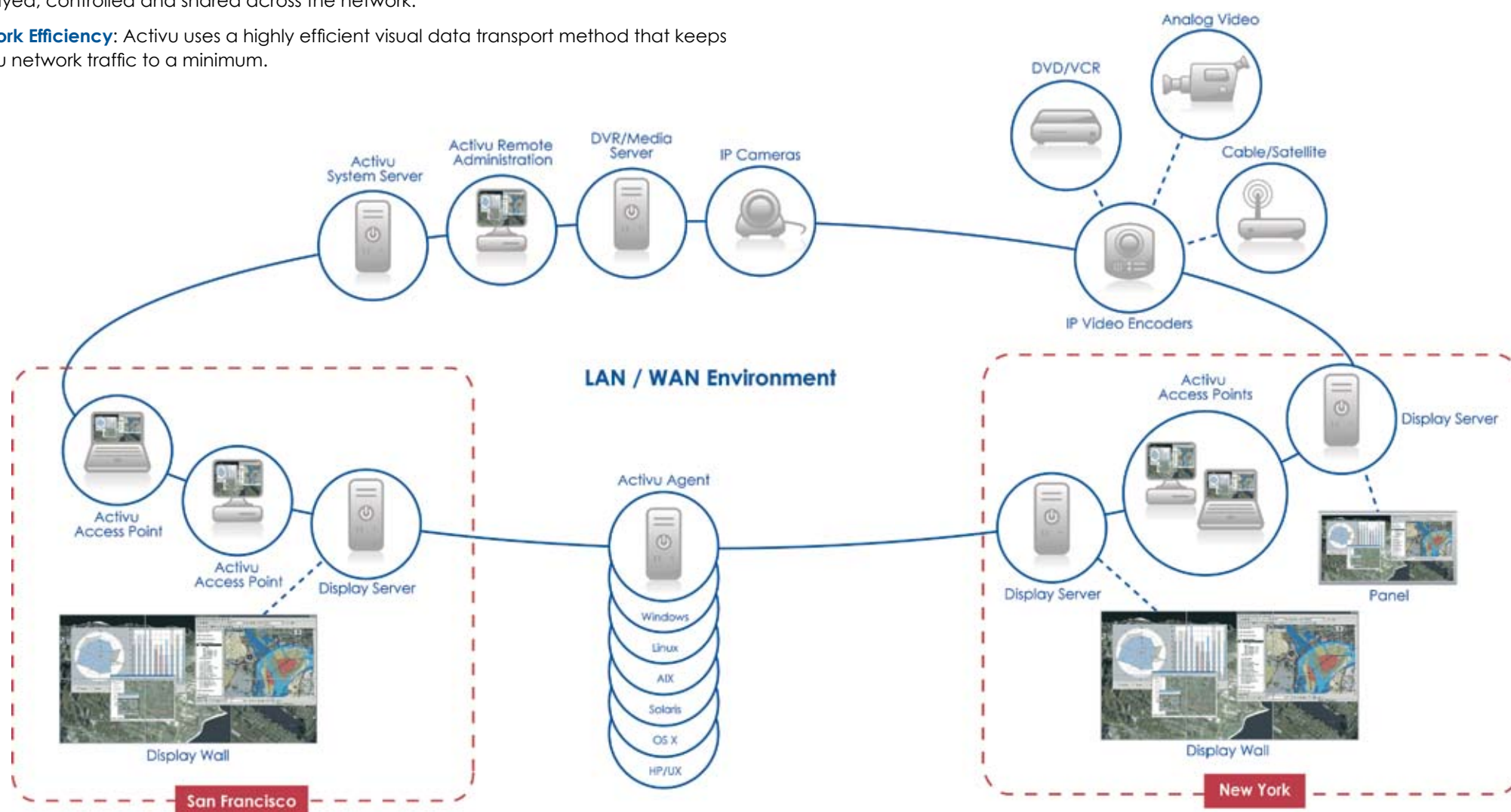
With Activu, organizations can establish and centrally administer role-based security and access rights, allowing interfaces, functionality and source access to be defined for individuals and user groups. Activu is experienced in delivering secure 24/7 environments for collaboration, content management and device control in a multi-level segregated network environment. Detailed log files track user activity.

Meets FIPS Encryption Standards

192 bit Triple DES encryption between Activu software modules

256 bit AES encryption between Agent and System Server

160 bit SHA 1 hash password protection



Activu Software

The Activu software suite delivers a powerful feature set for enabling organizations to accelerate communications and decision making capabilities, providing more robust tools for peer-to-peer collaboration and reducing overall bandwidth utilization.

Access and Control

Control and display content through the Activu Access Point, a client application that provides both basic and advanced end-user interfaces for manipulating and displaying source content. Advanced control is provided through the Activu toolbars. Basic control provides users with pre-defined interfaces for simple or restricted content. The user interface is defined by user log in.

Using Activu, one or more operators can control a common display (or multiple displays) using a simple but powerful drag-and-drop GUI from their desktop(s). It is common to design presets to allow instant, manual or automatically triggered changes in wall content. Wall content tends to be relatively static in its positioning with content windows aligned to avoid overlay for the maximum comfort and view ability of many users.

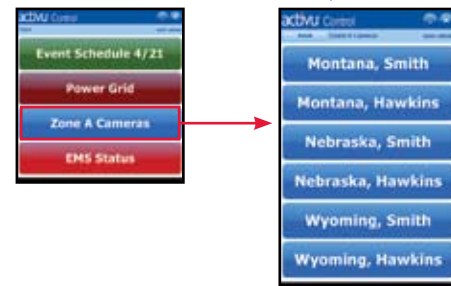
Simple Access



Toolbar



Scenarios: Pre-Defined Functionality



Example: Zone A Camera Access/ Camera Control



Advanced Access



Toolbar



Custom Wall View with Whiteboarding



Advanced Agent

The Activu Advanced Agent is an IP network capture and transport mechanism for computer sources that lowers overall bandwidth utilization and defines user hierarchy at the source and display level.

- Multiple desktop support
- User defined display sharing
- Supports Open GL and DirectX
- Users can define a single Window as a source
- Compatible with Win 7 and Win 2008 Server

Web Client

Control the Activu system from any web browser, running any operating system, for maximum control and accessibility. Supports all major browsers including: Internet Explorer, FireFox, Safari and Chrome.

Control your Activu system via an iPad, iTouch or windows-based mobile device.



Activu Software Feature Set

- Peer-to-peer collaboration tools
- Runs in single and multiple segregated LAN/WAN network environments with full network isolation
- FIPS compliant
- Integrates into existing network infrastructure
- Strong password enforcement
- Fully encrypted remote system administration
- Integrated with most IP cameras, servers, encoders, and major VTC systems
- Dynamic whiteboarding across multiple locations
- Highly intuitive user interface
- Support for Microsoft SQL Server Express Integration
- Web Service (SOAP) client support
- Integrate with third-party applications via Activu SDK
- Fully multitouch capable
- Centrally defined and administered role-based security policies
- Real-time action logging by individual user
- Display wall zone control
- Network isolation capability
- Built on .NET 3.5 platform
- iTouch/iPad integration

TeamShare

TeamShare is a peer-to-peer collaboration environment that allows individuals and groups to share, discuss, annotate and edit screen content from desk to desk and site to site. TeamShare creates a virtual dynamic shared workspace which can be displayed on any desktop, panel or wall display. Teams, regardless of location, can jointly work on documents, view graphics and video streams, and search the web.

TeamShare sessions operate in two modes: Teamwork or Presentation. In Teamwork mode, all participants have rights to add, resize, reposition and remove content concurrently, as well as simultaneously whiteboard. In Presentation mode, only the owner/creator of the TeamShare session can add, resize, reposition, remove and whiteboard. In this mode, participants have view-only capabilities.

TeamShare Session - NY



TeamShare Session - DC



Peer-to-Peer Collaboration

Content can be shared among individual users and groups across the organization

Add, resize, reposition and remove live sources

Select sources from the resource explorer of the TeamShare window

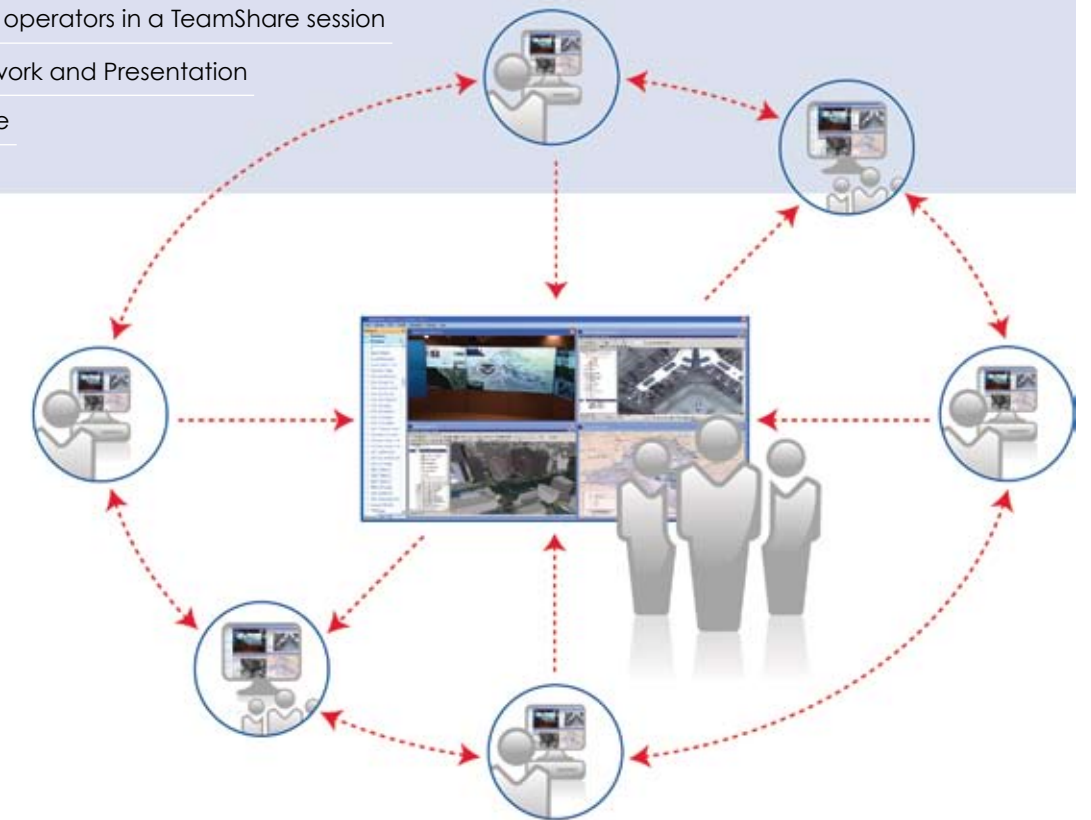
Work together on applications, documents and web pages

Whiteboard annotation (across the group)

Text chat between operators in a TeamShare session

Two modes: Teamwork and Presentation

Multitouch capable



TeamShare > Share, Discuss, Annotate, Edit:

documents, web pages, graphic files, IP video streams and more.

“Because of our new system, we can do more things than we have ever done before. **Our police and fire reps are amazed by the technology** which gives them access to multiple sources of information.

*Irish Hancock
City of Arlington Office of Emergency Management*



World-Class Support

Activu is committed to providing our customers with superior service, support, and training. We offer a broad range of customized services to deliver a fully integrated net-centric command and control solution with total lifecycle support.

System Design & Integration

Activu has been exclusively designing and building large-scale visualization and collaboration solutions for over twenty years. Activu has been recognized for its success through a number of awards, including a Business Week sponsored "Industrial Design Excellence Award" for the Nasdaq Marketsite.

Activu systems are pre-built and staged at our facility prior to installation, where they are subject to a rigorous Factory Acceptance Test (FAT). Post installation, the complete system undergoes an equally stringent Site Acceptance Test (SAT). Both the FAT and the SAT are conducted with customer representatives present. A final Field Operation Test (FOT) completes the installation process at the customer site.

Support

Activu offers direct access to a dedicated support team to reduce the risk of downtime. Support and maintenance is available through the lifetime of your solutions with options for onsite routine maintenance and emergency repairs, remote diagnosis (where appropriate), online and unlimited phone support*. Activu can service all aspects of your installation including hardware, software and network integration. Remote diagnosis conforms to client security protocols/regulations, with full network isolation.

Activu software support programs include all upgrades, including full version releases, at no cost.

Training

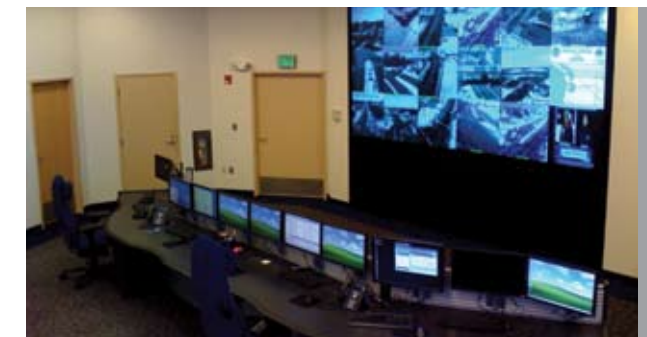
Activu provides onsite, remote, and web-based training programs that can be tailored for individuals and user groups. A portfolio of training courses is provided for operators and system administrators, increasing the user knowledge base for effectively working with the Activu system.

The Activu Process



“The **workmanship**, **customer support**, and **project management** that took place to deploy our emergency operations center in a short amount of time, less than 45 days after the purchase orders were signed, **was amazing**.”

Ed Jones
Chief of Traffic Operations
TRIP Center, Prince George's County, Maryland



*with appropriate support package