



1.888.248.4900  
US & Canada Toll Free Number

1.408.248.8960 Phone • 1.408.248.8961 FAX

www.avanu.com

U.S. SBA 8(a)/SDB Development Program Participant & WOSB Certified,  
DoD CCR, and IAE's ORCA Certified



## CAI Networks WebMux Load Balancers

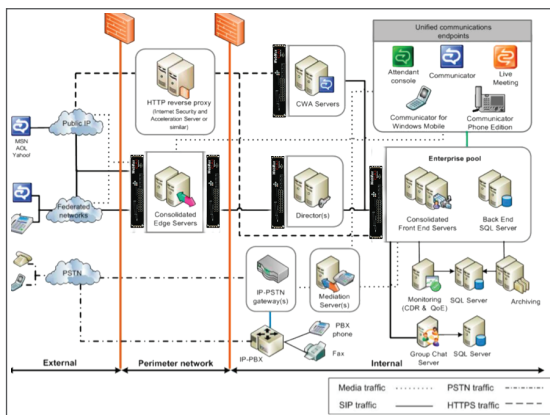
WebMux Load Balancers support the latest Microsoft® solutions to stay connected. Microsoft's Lync™ Server 2010 unifies powerful voice, video, e-mail, and text communications capabilities. It can maximize the ability of your enterprise to reach people, locally or remotely, with the greatest speed, efficiency, and convenience. Microsoft® Lync™ Server 2010 is the next step in the evolution from Office® Communications Server 2007. It enhances capabilities and efficiency in communicating with people by the best methods available at any given time, including: Instant messaging/IM, peer-to-peer and multi-party voice and video calling, audio/video/web conferencing, presence (being able to reach people wherever they are-by the best means at that moment), file transfer, and public switched telephone network (PSTN) connectivity. Communications not only occur within an organization but between organizations--as well as to the general public--whether it is through the Internet or the variety of telephone systems (including POTS and cellular/mobile). Lync™ provides the capability and the WebMux add cost-effective high availability.

WebMux Load Balancers from CAI Networks provides a simple, robust and effective solution for managing the complexity of an enterprise's Lync™ Server traffic between the servers that processes the users' communications traffic. WebMux load balancers play important roles for Edge Servers (IM/Presence, Conferencing, Voice) and Communicator Web Access (IM/Presence).

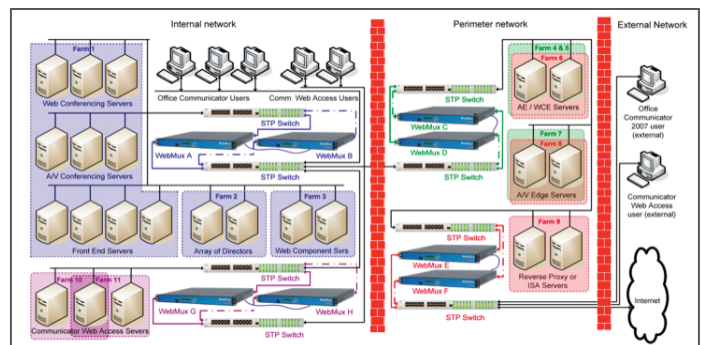
WebMux Load Balancer product line is known for its sophisticated features, straightforward management interfaces that are simple to use, and affordability. The WebMux, from the full-featured, yet affordable, 481SD to the impressive throughput of the 690PG, fits a wide range of load balancing needs. Easily integrate the WebMux into a Microsoft® Lync™ Server 2010 architecture that provides for a smart solution.

- Robust performance (1.7 to 4.0 gigabits per second throughput Layer 4, built-in SSL acceleration, supports up to 65,000 servers & unlimited virtual servers, IPv6 support, solid security including Smart DDoS protection)
- Configuration & management simplicity (menu-driven LCD front panel, remote Web browser management supporting HTTP and HTTPS, to the Telnet and SSH configuration and diagnostic capabilities)
- Price performance (Models starting at US\$3,999)

Sample Site Deployment - Lync™ Server 2010



Sample Local Site Deployment - Office Communications Server 2007 R2



**Resellers** - Contact AVANU to become an Authorized Reseller

### Other available related WebMux documents

- WebMux Data Sheet & Specifications
- Deployment Guide for Office Communications Server 2007 R2
- Microsoft® Lync™ Guide
- OCS 2007 R2 Walkthrough - Scale to Load Balanced FE Pool
- WebMux User Manual

Diagrams are for illustrative purposes only and are intended to be a representative of WebMux load balancing in Microsoft® Lync Server 2010 and Office Communications Server 2007 R2 environments

AVANU®  
5205 Prospect Rd #135-143  
San Jose CA 95129-5034  
USA  
1.408.248.8960 • 1.408.248.8961 FAX  
Rev 0911

SUBJECT TO CHANGE WITHOUT NOTICE  
Copyright © 2011 AVANU, LLC. All rights reserved.  
AVANU is a registered trademark of AVANU, LLC

All other trademarks and registered trademarks are the property of their respective owner(s).