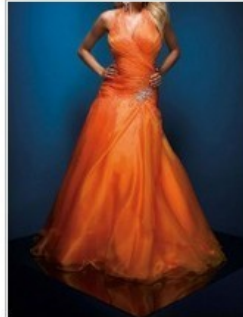


## How to Choose Evening Dresses for Your Figure

Women in all ages like to show off themselves in various [evening dresses](#) at different parties. But do you find the right one? What kind of evening dress is flattering your body shape perfectly? Which evening gown will fit and flatters you best? The following guidelines may be helpful when choosing your evening dress.



Empire Halter.Backless Blue  
Rhinestones Beading Sequins  
Sku:Eveningdresses1448  
~~US\$396.46~~ US\$198.23



A-Line/Princess Line Dress  
Halter Package Hip Orange  
Sku:Eveningdresses1409  
~~US\$378.54~~ US\$189.27



Ball Gown Strapless Romantic  
Finge Pink Brooch Ruffles  
Sku:Eveningdresses1406  
~~US\$378.76~~ US\$189.38



A-Line/Princess Line Dress  
Strapless Package Hip Fuchsia  
Sku:Eveningdresses1405  
~~US\$578.12~~ US\$289.06

### If you're Pear-shapes

Look for: A skirt which subtly flares out from the natural waist to the floor. Such kind of evening dress accentuates the slinky midsection and drifting away from the hips.

Fabrics: Duchess satin, taffeta

Neckline: [Spaghetti strap](#), v-neck

Silhouette: A-line

Theme: Classic, elegant, formal

### If You're Apple-Shaped

Look for: An evening dress that emphasizes the smallest part on the waistline and flow out a gradual floor length A shape.

Fabrics: Organza, satin, silk

Neckline: [Deep V](#) (which highlights the vertical)

Silhouette: A-line

Tips: Avoid mermaid/trumpet dress which highlights your widest body part and then flows out at the most slender part of your body.

### If You're Busty

Look for: A strapless evening gown with a [sweetheart neckline](#).

Fabrics: Organza, satin, silk

Neckline: Scooped neck, sweetheart

Silhouette: A-line

### If You're Small-Chested

Look for: An evening dress with ruched bodice which build gorgeous curves.

Fabrics: Organza, satin, silk

Neckline: [Halter](#), strapless

Silhouette: Sheath/column, A-line, trumpet/mermaid

Tips: Search for a pair of high quality nubra which gives you a nice support.

### If You're Plus-Sized

Look for: An [empire evening gown](#) with a skirt just begins under the bust and flares into a gradual sweep length dress.

Fabrics: Satin, chiffon, tulle  
Neckline: Strapless  
Silhouette: A-line empire dress



Trumpet Sweet-Heart Package  
Hip Applique Pleated Taffeta  
Sku:Eveningdresses1178  
~~US\$376.97~~ US\$188.48



Ruby Red Mermaid/Trumpet  
Strapless Chest Wrap Pleated  
Sku:Eveningdresses1176  
~~US\$376.97~~ US\$188.48



Mermaid Soft Red Package Hip  
Taffeta Pleated Beading Floor  
Sku:Eveningdresses1175  
~~US\$374.98~~ US\$187.49



A-Line Strapless Sweet-Heart  
Applique Beading Pleated Tulle  
Sku:Eveningdresses1138  
~~US\$464.82~~ US\$230.91

[Buy now!](#)

If You're Petite

Look for: An evening dress with a waistline above natural waist to stretch the lower half of your dress.

Fabrics: Sheen

Neckline: V-neck

Silhouette: Sheath/column, A-line, trumpet/mermaid

Tips: Avoid calf-length skirt as well as ball gowns or [dropped waist dress](#) which makes your legs look shorter or even disappeared. Don't choose a dress with huge bows or exaggerated embellishments.

If You're Tall

Look for: A simple designed evening gown with natural shape reflects your longer proportions.

Fabrics: Organza, satin, silk

Neckline: V-neck, strapless, sweetheart, boat neckline

Silhouette: A-line, ball gown, empire, mermaid, sheath

Tips: Avoid too many embellishments such as ruffles, bows, flounces or flowers over the dress.

If You're Straight-Lined

Look for: An evening dress which builds perfect feminine curves.

Fabrics: Charmeuse

Neckline: V-neck

Silhouette: Sheath/column, ball gown

Tips: Apply a bodice with some ruching or flounces over it if you have a flat bust.