

SECURE



Benefits

- **Saves Time**

CrossTec Secure's ease of use saves administrators valuable time. CrossTec Secure also works quicker than other reimaging or restoration products, simply re-boot to restore.

- **Content Control**

Control the creation of content and restrict unwanted file downloads. CrossTec Secure can block access to Windows system tools and lock the control panel, task manager, command prompt, and registry.

- **Peace of Mind**

CrossTec Secure protects the operating system and computer settings.

Simplify Desktop Security

CrossTec Secure™ simplifies desktop security by protecting the Windows® operating systems and desktops from unwanted or malicious changes. CrossTec Secure prevents users from deleting files and applications, making unauthorized changes to the desktop or operating system, saving or using unauthorized programs, or utilizing USB or CD drives. Essentially, CrossTec Secure prevents harm to the operating system.

New to CrossTec Secure is integrated hard disk protection with roll back and recovery technology. When required, the system will restore back to a previous point in time, quickly and transparently. CrossTec Secure protects the operating system and files from accidental or malicious deletion and provides a means for automatic restoration on re-boot.

CrossTec Secure is very easy to use. Its intuitive format allows the administrator to simply check a box to enable or disable a feature. Users are able to lock-down files and protect PC settings without lengthy and complicated procedures. CrossTec Secure is an easy to use alternative to Active Directory®.

CrossTec Secure now offers twice the level of desktop security and protection desktop lockdown and hard disk protection and recovery in a single, easy-to-use package.

Features

- **Deploy**
Centrally deploy CrossTec Secure across your LAN/WAN to all computers.
- **Management**
Centrally manage and update security configurations.
- **Restore on Re-boot**
One-click restore on re-boot.
- **Prevention**
Prevent copying, deletion, and renaming of files and folders.
- **Privacy**
Hide folders and restrict creation of defined file types.
- **Restrictions**
 - Restrict changes to the desktop, taskbar, and system settings.
 - Restrict shutdown, logoff, lock, and password changes.
 - Lock control panels, task manager, command prompt, and registry.
 - Prevent users from installing unauthorized software.
 - Restrict available network drives, drive mappings and network neighborhoods.
 - Prevent access to Windows system tools.
 - Prevent web browsers from running.
 - Restrict creation and deletion of printers.
 - Disable USB storage devices, allow read only or prevent application launch.
 - Control access to USB and CD/DVD devices.
 - Apply policies to users, or exclude specified accounts.

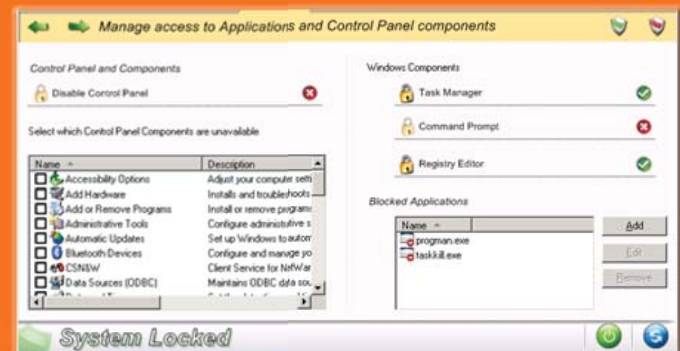
SECURE

Simplify Desktop Security

Easy to Use Interface



Easy Configuration



Restore on Re-boot

