



winter

S E S S I O N

2012

UMBC

AN HONORS UNIVERSITY IN MARYLAND

# W I N T E R   S E S S I O N

## January 3 – 25

Register: October 31 – January 2

**This January, earn up to 4.5 credits in just four weeks.**

Whether you're a current UMBC student, an incoming UMBC student, or a visiting student – winter session at UMBC is the best time to meet your academic needs and move you ahead.

- Reduce your spring course load
- Complete a prerequisite
- Graduate on time (or early!)

[umbc.edu/winter](http://umbc.edu/winter) | [winter@umbc.edu](mailto:winter@umbc.edu) | 410-455-2335



Find us on facebook: [facebook.com/UMBCWinter](https://facebook.com/UMBCWinter)



Sign up for text alerts: Text "WINTER" to 70359

<b>Important Dates &amp; Deadlines</b> .....	<b>2</b>
<b>Financial Information</b> .....	<b>3</b>
<b>Admission and Registration</b> .....	<b>4-5</b>
<b>Student Services</b> .....	<b>6</b>
<b>How to Search Schedule of Classes</b> .....	<b>7</b>
<b>Hybrid and Online Courses</b> .....	<b>8</b>
<b>Shady Grove Courses</b> .....	<b>9</b>
<b>Winter Session Courses</b> .....	<b>10-18</b>
<b>General Education Program Course Chart</b> .....	<b>20</b>

## Winter Session on the Web

For detailed information on admissions, registration, course updates and the schedule of classes, visit [umbc.edu/winter](http://umbc.edu/winter).

## Summer Session 2012

Earn up to 16 credits during UMBC's summer session, May 29 – August 17, 2012. Visit [umbc.edu/summer](http://umbc.edu/summer) for additional information.

## UMBC on the Web

For information on academic programs, majors, athletics, campus news and special events, visit [umbc.edu](http://umbc.edu).

## Get the Help You Need

### Undergraduate Admissions

admissions@umbc.edu  
410-455-2291  
[umbc.edu/undergraduate](http://umbc.edu/undergraduate)

### Graduate Admissions

umbcgrad@umbc.edu  
410-455-2537  
[umbc.edu/gradschool](http://umbc.edu/gradschool)

### Advising

Academic and  
Pre-Professional Advising  
arc@umbc.edu  
410-455-2729  
[umbc.edu/advising](http://umbc.edu/advising)

### Registration, Drop/ Withdrawal, Transcripts Registrar's Office

410-455-2500  
[umbc.edu/registrar](http://umbc.edu/registrar)

### Billing and Student Accounts Student Business Services

sbs@umbc.edu  
410-455-2288  
[umbc.edu/sbs](http://umbc.edu/sbs)

### Financial Aid and FAFSA Financial Aid and Scholarships

finaid@umbc.edu  
410-455 2387  
[umbc.edu/financialaid](http://umbc.edu/financialaid)

### myUMBC, Computer and Technology Assistance Division of Information Technology

410-455-3838  
[umbc.edu/doit](http://umbc.edu/doit)

### Study Abroad Programs

sao@umbc.edu  
410-455-2624  
[umbc.edu/ies/studyabroad](http://umbc.edu/ies/studyabroad)

### All Other Inquiries Office of Summer, Winter and Special Programs

winter@umbc.edu  
410-455-2335  
[umbc.edu/winter](http://umbc.edu/winter)

# Winter Session 2012

## IMPORTANT DATES & DEADLINES

### October

**31** Registration begins

### November

**22** Last day to apply for winter session scholarship

**24-25** Campus closed for Thanksgiving holiday

### December

**26-31** Campus closed for Winter Break

### January

**1-2** Campus closed for Winter Break

**2** Last day students will automatically be enrolled in classes from waitlists

**3** First day of winter session

**6** Last day to drop a course without a grade of "W" on transcript

Last day to add courses

Last day to change grading method from or to audit

Last day to change from pass/fail to regular grading method

**16** Campus closed for MLK Jr. holiday

**18** Last day to drop a course with a grade of "W" on transcript

Last day to change grading method from regular to pass/fail

**24** Last day for "semester withdrawal" from winter session (*please see page 5 for more information*)

**25** Last day of winter session

**26** First day of spring semester

**31** Grades are available to students on *myUMBC*



### Schedule Adjustment Period (January 3 – 6)

During the four-day schedule adjustment period, students may SWAP a course for another course with the same number of credits with no financial penalty. See page 4 for more information.

### Holiday Make-Up Schedule

UMBC is closed on Monday, January 2 and Monday, January 16. Instructors may reschedule classes that were missed due to the closing(s).

### Inclement Weather Policy

If classes are cancelled due to a university closing, the official make-up day will be the first Saturday following the cancelled class. However, instructors may reschedule an alternate make-up day.

For more information on closing, updates and re-opening see [umbc.edu](http://umbc.edu), [my.umbc.edu](http://my.umbc.edu) or call 410-455-6789.

## FINANCIAL INFORMATION

### Tuition & Fees

#### Undergraduate Tuition (per credit hour)

MD Resident	\$286
Non-MD Resident	\$718

#### Undergraduate Fees

Application/matriculation fee	\$50
Auxiliary facilities fee (per credit hour)	\$21
Winter Session flat fee	\$20
*Late registration fee	\$20

#### Graduate Tuition (per credit hour)

MD Resident	\$486
Non-MD Resident	\$804

#### Graduate Fees

Online application	\$50
Paper application	\$70
Auxiliary facilities fee (per credit hour)	\$21
Winter Session flat fee	\$20
*Late registration fee	\$20

*\*This non-refundable fee is assessed when students register on the first day of the session or later.*

*Notwithstanding any other provisions of this or any other University publication, the University reserves the right to make changes in tuition, fees and other charges at any time such changes are deemed necessary by the University and the University System of Maryland Board of Regents. (See [umbc.edu/winter](http://umbc.edu/winter) for updates.)*

### Winter Session Refunds

Tuition and auxiliary fees are fully refunded **through the first day of winter session (January 3)**. After January 3, refunds are pro-rated based on the day the course is dropped. No tuition or fee refund is provided after January 9.

### Winter Session Refund Schedule

Course Drop Date:	Tuition & Fees Refunded:
Before January 4	100%
January 4	80%
January 5	60%
January 6-8	40%
January 9	20%

*No refund is provided after January 9.*

### Special Fees

Some courses may have additional fees, which are noted in the online Schedule of Classes.

### Paying Your Bill

Billing is managed electronically. Access e-billing through *myUMBC* (under *Billing and Personal Finance*, select *Payments and Billing*).

### Late Payment Fee

A late payment fee of 5% of the past due balance (minimum late fee of \$10, maximum \$200) will be charged the first time an account becomes past due for the semester. An additional late payment fee of 1% of the past due balance (minimum late fee of \$10, maximum \$200) will be charged each month that charges remain past due for the semester.

### Winter Scholarships

Eligible UMBC degree-seeking students can apply online until **November 22**. The scholarship covers the cost of up to three credits of in-state undergraduate or graduate tuition. For eligibility requirements and an online application, visit [umbc.edu/winter](http://umbc.edu/winter) (select *Scholarships* under *Financials*).

# Winter Session 2012

## ADMISSION

I Am:	Do I Need to Apply to Winter Session?
A Current UMBC Student	No
An Incoming UMBC Student (Spring 2012)	No – Be sure to change your semester start date through the Office of Undergraduate Admission. For more information, visit <a href="http://umbc.edu/winter">umbc.edu/winter</a> .
A Visiting Student (from Another College or University)	Yes – Apply online for winter admission. Transcripts are not required. For more information, visit <a href="http://umbc.edu/winter">umbc.edu/winter</a> .

## REGISTRATION

Register for courses **October 31 – January 2**. Access the online Schedule of Classes through *myUMBC*.

### Schedule Adjustment Period (January 3 – 6)

The time frame when you can use your *myUMBC* account to SWAP, ADD, or DROP a course.

### Swapping Courses

The SWAP option allows you to simultaneously add and drop a course (with the same number of credits) without financial or academic penalty. The course you wish to remove will not be dropped until you are successfully enrolled in the added course. Before swapping a course, check with the instructor to ensure missed course work can be completed.

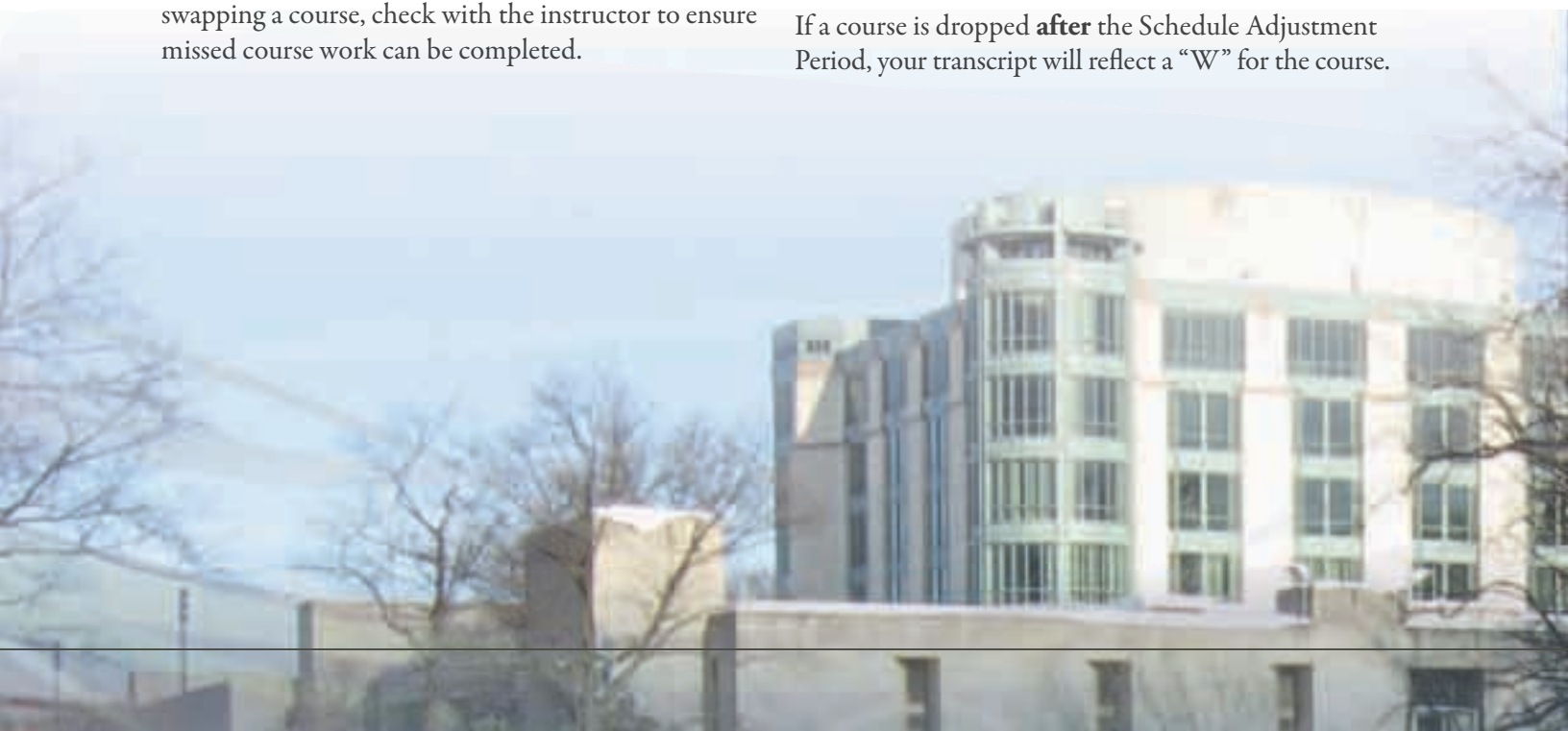
### Adding Courses

During the Schedule Adjustment Period, check with the instructor **before** adding a course to ensure missed coursework can be completed. Courses added during the Schedule Adjustment Period will be assessed a \$20 non-refundable late registration fee (see page 3).

### Dropping Courses

Courses dropped during the Schedule Adjustment Period will receive a pro-rated refund based on the date the course is dropped (see page 3).

If a course is dropped **after** the Schedule Adjustment Period, your transcript will reflect a “W” for the course.



## REGISTRATION RESOURCES

### After the Schedule Adjustment Period (January 7-18)

Once the Schedule Adjustment Period ends, you can no longer use *myUMBC* to make schedule adjustments, except to drop a course (a grade of “W” will appear on your transcript).

**Between January 7-18**, the grade method for a course can be changed from “regular” to “pass/fail” by submitting a Request Tracker (RT) ticket to the Registrar’s Office.

### Semester Withdrawal from Winter Session 2012

**After January 18**, the only way to drop a course is to withdraw from the session (i.e., drop **all** winter courses). Submit a Request Tracker (RT) ticket to the Registrar’s Office requesting a “semester withdraw.” A notation of “session withdrawal” will appear on your transcript.

### Winter Session Course Load

Approval is needed to enroll in more than 4.5 credits. Download a **Request to Enroll for Excess Credits** form at [umbc.edu/winter](http://umbc.edu/winter) (select *Enroll for Excess Credit* under *Register*).

### Repeat Courses

Students may not register for a course more than two times. Students may petition the Office of Undergraduate Education (OUE) for a **third and final attempt** of a course taken at UMBC or another institution. Download the **Course Repeat Petition** form from [umbc.edu/winter](http://umbc.edu/winter) (select *Registration Resources* under *Register*) and submit it—along with the other required documents—to OUE no later than **December 20**.

### Independent Study Courses

Academic departments schedule independent study winter courses on an “as needed” basis. To request the course be added to the winter schedule, contact the appropriate academic department before the final day to register (**January 6**).

# Winter Session 2012

## STUDENT SERVICES

### myUMBC

myUMBC is a web-based portal to various services and online community resources at UMBC. Use myUMBC to register for courses, view account balances, pay bills online, register for a parking permit, check university e-mail, check grades, and submit RT tickets. Visit [my.umbc.edu](http://my.umbc.edu).

### Request Tracker (RT) Ticket

Request Tracker (RT) is a web-based feature that allows students to request help through myUMBC. Submit an RT ticket for billing issues, computing/technology support, questions about your class schedule, grades, etc. For more information about submitting an RT ticket, visit [umbc.edu/winter](http://umbc.edu/winter) (select *Registration Resources* under *Register*).

### Parking Permits

**Current students** display the 2011/2012 parking tag.

**New/Visiting students** register for a parking permit at [my.umbc.edu/go/parking](http://my.umbc.edu/go/parking).

The permit cost is included in the special sessions fees.

For more information, visit [umbc.edu/parking/fsstud](http://umbc.edu/parking/fsstud).

### Textbooks

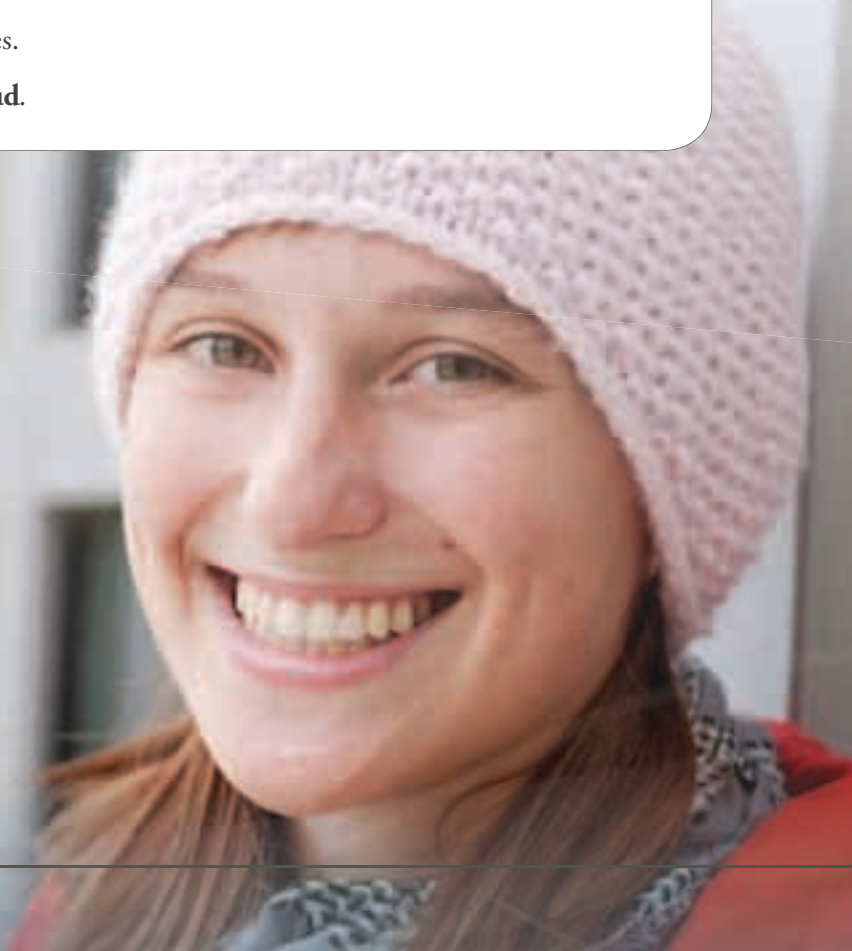
Winter session textbooks are available in December at the UMBC Bookstore and online at [bookstore.umbc.edu](http://bookstore.umbc.edu). Textbooks, in the same condition as purchased, can be returned for a full refund with a sales receipt until January 9. For more information, visit [bookstore.umbc.edu](http://bookstore.umbc.edu) or e-mail [textbook@umbc.edu](mailto:textbook@umbc.edu).

### Housing

Potomac Hall, several floors in Harbor Hall, and the apartments (including Walker Avenue) remain open in January. For questions about housing, contact the Residential Life Operations team at **410-455-8832** or [reslife@umbc.edu](mailto:reslife@umbc.edu).

### ID Cards

The free photo ID provides instant access to campus services and facilities including: library services, copying, bookstore items and cashless purchases for food and vending items. Call **443-612-2273** or visit the Campus Card office located in the University Center Building.





## SEARCH SCHEDULE OF CLASSES

The winter schedule of classes is available through *myUMBC*. Students are responsible for managing their course enrollment including drop/add deadline, waitlists and permission-required courses.

### How to Search for a Course

Search for courses by subject, course number, meeting times, day of week, instructor name, class number, course title keyword, course units, mode of instruction, GEP and/or campus. Select at least two search criteria. Click “Search” to view your search results. Use additional search criteria to narrow your search results.

**Class Detail**

Once a course is selected, click on the section hyperlink to view **Class Detail**.

**Class Notes**

Before registering for the course, make sure to review the **Class Notes** section for a description of the course and other important information.

## HYBRID AND ONLINE COURSES



### Hybrid Courses

Hybrid courses blend in-person and online learning. Hybrid courses reduce in-class time and require more self-directed learning.

**ECON 122**

Principles of Accounting II (3)

**PHIL 248**

Introduction to Scientific Reasoning (3)

**PHIL 251**

Ethical Issues in Science and Engineering (3)

**PHIL 399**

Topics in Philosophy – Business Ethics (3)

**POLI 260**

Comparative Politics (3)

**POLI 381**

International Relations of the Asia-Pacific Region (3)

**POLI 489**

Selected Topics in International Relations – International Negotiations (3)

**PSYC 200**

Child Developmental Psychology (3)

**PSYC 360**

 Psychology of Motivation (3)

**PSYC 375**

Neuroanatomy (3)

**SCI 100**

Water; An Interdisciplinary Study (3)

**SOWK 360**

Social Welfare, Social Policy, and Social Work II (3)

**SOWK 389**

Human Behavior II (3)

**SPAN 101**

Elementary Spanish I (4)

**SPAN 102**

Elementary Spanish II (4)

**SPAN 201**

Intermediate Spanish I (4)

**STAT 121**

Introduction to Statistics for the Social Sciences (4)

**STAT 350**

Statistics with Applications in the Biological Sciences (4)

**STAT 351**

Applied Statistics for Business and Economics (4)



### Online Courses

Online courses use Blackboard, UMBC's course management system, and emphasize self-directed student learning. All course work is managed online. Students do not come to campus for class meetings, but instead manage their own learning online.

**AFST 100**

Introduction to The Black Experience (3)

**ECON 102**

Principles of Macroeconomics (3)

**EDUC 689**

Advanced Special Topics in Education – Portfolio Development & Talent Management (3)

**GWST 323**

Gender and Sitcoms (3)

**GWST 353**

Marriage and the Family (3)

**HIST 347**

The United States Since 1945 (3)

**MATH 106**

Algebra and Elementary Functions (3)

**MUSC 100**

Introduction to Music (3)

**MUSC 101**

Fundamentals of Music Theory (3)

**POLI 409**

Selected Topics in Political Science – Politics of Human Rights (3)

**SOCY 101**

Basic Concepts in Sociology (3)

**SOCY 353**

Marriage and the Family (3)

**SOCY 397**

Selected Topics in Sociology – International Health (3)

**SOWK 240**

Information Technology in Social Work (3)

## SHADY GROVE COURSES



The Universities at Shady Grove (USG) is a University of Maryland regional center located in Rockville, MD. During winter session, courses are open to “main campus” UMBC students, current Shady Grove students, incoming transfer students, and visiting students from other colleges and universities. *NOTE: During the regular academic year, only those students admitted to a designated UMBC at USG program may attend classes at USG.*

### AMST 325

Studies in Popular Culture (3)

Class #: 1198

M T W TH 1:00 PM - 4:10 PM (LEC)

Dabrina Taylor

### POLI 381

International Relations of the  
Asia-Pacific Region (3)



Class #: 1195

T TH 11:00 AM - 2:10 PM (LEC)

Sunil Dasgupta

### PSYC 360

Psychology of Motivation (3)



Class #: 1096

M W 9:30 AM - 12:40 PM (LEC)

Edward Rudow

### GES 679

Professional Seminar: Leadership (1)

Class #: 1097

T TH 6:00 PM - 9:10 PM (SEM)

Erwin Villiger



# Winter Session 2012

## WINTER SESSION COURSES

### Icon Key



Hybrid Course



Online Course



Universities at Shady Grove

### AFRICANA STUDIES

#### AFST 100

Introduction to The Black Experience (3)



Class #: 1093  
Kibibi Mack-Shelton

#### AFST 212

Introduction to African History (3)

Class #: 1202  
M T W TH 9:00 AM - 12:10 PM (LEC)  
Gloria Chuku

### AMERICAN STUDIES

#### AMST 310

Gender and Inequality in America (3)

Class #: 1167  
M T W TH 1:00 PM - 4:10 PM (LEC)  
Kathryn Drabinski

#### AMST 320

Television in American Culture (3)

Class #: 1166  
M T W TH 2:00 PM - 5:10 PM (LEC)  
Michael Hummel

#### AMST 325

Studies in Popular Culture (3)



Class #: 1198  
M T W TH  
1:00 PM - 4:10 PM (LEC)  
Dabrina Taylor

#### AMST 357

Special Topics in Communications, Media, and the Arts: Terrorism and Popular Culture (3)

Class #: 1199  
M T W TH 9:00 AM - 12:10 PM (LEC)  
Christine Muller

### ANCIENT STUDIES

#### ANCS 210

Classical Mythology (3)

Class #: 1003  
M T W TH 9:00 AM - 12:10 PM (LEC)  
Michael Lane

#### ANCS 301

Ancient Civilizations: Southern Italy and Sicily (3)

Class #: 1004  
TRAVEL STUDY  
Richard Mason  
Robert Rivkin

### ANTHROPOLOGY

#### ANTH 211

Cultural Anthropology (3)

Class #: 1010  
T TH 4:30 PM - 7:40 PM (LEC)  
Class also meets on two Saturdays:  
January 7 and 14  
9:00 AM - 4:30 PM (LEC)  
Paul Donato

### ARABIC

#### ARBC 101

Elementary Arabic I (4)

Class #: 1020  
M T W TH F 9:00 AM - 12:10 PM (LEC)  
Samir El Omari

### ARCHAEOLOGY

#### ARCH 120

World Archaeology (3)

Class #: 1038  
M T W TH 6:00 PM - 9:10 PM (LEC)  
Esther Read

### DANCE

#### DANC 101

Dance Appreciation

Class #: 1174  
M T W TH 1:00 PM - 4:10 PM  
Joan Nicholas Walker

## Travel/Study 2012: Southern Italy and Sicily March 16-24, 2012



**ANCS 301** is a special sessions travel study course. Credit is offered in the winter session term with travel during Spring Break in March.

For more information contact the Ancient Studies department at 410-455-6265 or visit [umbc.edu/anacs/travel.html](http://umbc.edu/anacs/travel.html).

### ECONOMICS

#### ECON 101

Principles of Microeconomics (3)

Class #: 1160

M T W TH 9:00 AM - 12:10 PM (LEC)

Mark Thomas

#### ECON 102

Principles of Macroeconomics (3)



Class #: 1041

Emmanuel Anoruo

#### ECON 121

Principles of Accounting I (3)

Class #: 1088

T W TH F 9:00 AM - 12:10 PM (LEC)

Ronald Antlitz

#### ECON 122

Principles of Accounting II (3)



Class #: 1087

M W F

7:00 PM - 9:00 PM (LEC)

Timothy Hardy

#### ECON 374

Fundamentals of Financial Management (3)

Class #: 1047

M T W TH 1:00 PM - 4:10 PM (LEC)

Alex Tang

# Winter Session 2012

## WINTER SESSION COURSES

### Icon Key



Hybrid Course



Online Course



Universities at Shady Grove

### ECON 463

Theory of Public Finance (3)

Class #: 1170

M T W TH 9:00 AM - 12:10 PM (LEC)

Russell Morris

### ECON 481

International Trade Theory (3)

Class #: 1058

M T W TH 1:00 PM - 4:10 PM (LEC)

Mark Thomas

## EDUCATION

### EDUC 689

Advanced Special Topics in Education: Portfolio Development and Talent Management



Class #: 1039

Gregory Williams



## ENGLISH

### ENGL 190

The World of Language I (3)

Class #: 1095

M T W TH 1:00 PM - 4:10 PM (LEC)

German Westphal

### ENGL 233

Issues in World Literature: Individual and Collective Resistance to Oppression (3)

Class #: 1193

M T W TH 1:00 PM - 4:10 PM (LEC)

Brian Dunnigan

### ENGL 271

Introduction to Creative Writing – Fiction (3)

Class #: 1189

M T W TH 6:00 PM - 9:10 PM (LEC)

John Carillo

### ENGL 316

Literature and the Other Arts: The Avant-Garde at the Movies (3)

Class #: 1192

M T W TH 9:00 AM - 12:10 PM (LEC)

Craig Saper

## GENDER AND WOMEN'S STUDIES

### GWST 310

Gender and Inequality in America (3)

Class #: 1172

M T W TH 1:00 PM - 4:10 PM (LEC)

Kathryn Drabinski

### GWST 323

Gender and Sitcoms (3)



Class #: 1206

Susan McCully

### GWST 353

Marriage and the Family (3)



Class #: 1094

Meryl Damasiewicz

## GEOGRAPHY AND ENVIRONMENTAL SYSTEMS

### GES 120

Environmental Science and Conservation (3)

Class #: 1188

M T W TH 9:00 AM - 12:10 PM (LEC)

Suzanne Braunschweig

### GES 679

Professional Seminar: Leadership (1)



Class #: 1097

T TH 6:00 PM - 9:10 PM (SEM)

Erwin Villiger

## HEALTH ADMINISTRATION AND POLICY PROGRAM

### HAPP 380

Global Issues in Health and Disease (3)

Class #: 1002

M T W TH 9:00 AM - 12:10 PM (LEC)

Jeanette Jeffrey

## HISTORY

### HIST 243

Introduction to African History (3)

Class #: 1203

M T W TH 9:00 AM - 12:10 PM (LEC)

Gloria Chuku

### HIST 347

The United States Since 1945 (3)



Class #: 1031

Howard Smead

# MCS 101L



## Digital Storytelling at UMBC

Digital storytelling is a technique that uses new media and personal narrative to capture life experiences. Digital storytelling has become increasingly popular as a means of promoting self-expression while developing useful digital literacy skills.

UMBC's New Media Studio works with both students and faculty to create innovative audio and visual learning experiences through digital storytelling.

This January, the New Media Studio will offer a three-day workshop that teaches how to use video and image editing software to produce digital stories. Participants will learn how to produce personal narratives using voice over, images and sound. Video and image editing software will be presented, including Final Cut and Adobe Photoshop.

This workshop is offered for credit and welcomes UMBC students, faculty and staff who want to learn how to use technology to create their own digital stories. See listing for MCS 101L (Class #: 1194) – Multimedia Literacy Lab – for workshop dates.

For more information on digital storytelling at UMBC, visit [www.umbc.edu/stories](http://www.umbc.edu/stories).

### HIST 381

From Samurai to "Salariman":  
Japanese History through Film  
and Literature (3)

Class #: 1028  
T W TH F 9:00 AM - 12:10 PM (LEC)  
Constantine Vaporis

### LINGUISTICS

#### LING 190

The World of Language I (3)

Class #: 1012  
M T W TH 1:00 PM - 4:10 PM (LEC)  
German Westphal

### MATHEMATICS

#### MATH 100

Introduction to Contemporary  
Mathematics (3)

Class #: 1110  
M T W TH 1:00 PM - 4:10 PM (LEC)  
Samantha Riley

#### MATH 106

Algebra and Elementary  
Functions (3)



Class #: 1111  
Bonnie Kegan

### MATH 155B

Calculus of Trigonometric  
Functions (1)

Class #: 1139  
W 1:00 PM - 4:15 PM (LEC)  
David Trott

### MATH 426

Introduction to Math Software  
Packages: MATLAB (2)

Class #: 1112  
M W F 6:00 PM - 9:10 PM (LEC)  
Michael Muscedere

# Winter Session 2012

## WINTER SESSION COURSES

### Icon Key



Hybrid Course



Online Course



Universities at Shady Grove

### MEDIA AND COMMUNICATION STUDIES

#### MCS 101L

Multimedia Literacy Lab (1)

Class #: 1194

W TH F 10:00 AM - 4:00 PM (LAB)

January 18, 19 and 20

William Shewbridge

#### MCS 370

Special Topics in Media and Communication Studies: The Avant-Garde at the Movies (3)

Class #: 1043

M T W TH 9:00 AM - 12:10 PM (LEC)

Craig Saper

#### MCS 377

Desktop Publishing and the Web (3)

Class #: 1042

M T W TH 9:00 AM - 12:10 PM (LEC)

Calvin Custen

### MODERN LANGUAGES AND LINGUISTICS

#### MLL 190

The World of Language I (3)

Class #: 1013

M T W TH 1:00 PM - 4:10 PM (LEC)

German Westphal

#### MLL 344

Literature and the Other Arts: The Avant-Garde at the Movies (3)

Class #: 1197

M T W TH 9:00 AM - 12:10 PM (LEC)

Craig Saper

### MUSIC

#### MUSIC 100

Introduction to Music (3)



Class #: 1051  
Anna Rubin

#### MUSIC 101

Fundamentals of Music Theory (3)



Class #: 1052  
Matthew Belzer

### MUSIC 230

Musics of the World (3)

Class #: 1053

T W TH F 1:00 PM - 4:10 PM (LEC)

Gina Beck

### PHILOSOPHY

#### PHIL 100

Introduction to Philosophy (3)

Class #: 1089

M T W TH 9:00 AM - 12:10 PM (LEC)

Roye Templeton

#### PHIL 248

Introduction to Scientific Reasoning (3)



Class #: 1033

T TH 1:00 PM - 4:10 PM (LEC)

Jessica Pfeifer

#### PHIL 251

Ethical Issues in Science and Engineering (3)



Class #: 1145

T TH 1:00 PM - 4:10 PM (LEC)

Richard Wilson

#### PHIL 399

Topics in Philosophy: Business Ethics (3)



Class #: 1049

T TH 6:00 PM - 9:10 PM (LEC)

Richard Wilson



**PHYSICAL EDUCATION****PHED 111**

Aerobic Conditioning (1.5)

Class #: 1057

T TH 9:00 AM - 12:10 PM (LEC)

Michael D'Archangelo

Class #: 1059

M W 9:00 AM - 12:10 PM (LEC)

Kelly Fahey

**PHED 112**

Beginning Swimming (1.5)

Class #: 1062

T TH 9:00 AM - 12:10 PM (LEC)

Chad Cradock

**PHED 121**

Physical Fitness (1.5)

Class #: 1063

M W 9:00 AM - 12:10 PM (LEC)

Frederic Cantor

Class #: 1064

T TH 9:00 AM - 12:10 PM (LEC)

John Jancuska

**PHED 125**

Volleyball (1.5)

Class #: 1066

M W 1:00 PM - 4:10 PM (LEC)

Sarah Warner

Class #: 1067

T TH 9:00 AM - 12:10 PM (LEC)

Instructor TBD

**PHED 129**

Women's Self Defense (1.5)

Class #: 1068

T TH 1:00 PM - 4:10 PM (LEC)

Cathy Johnson

**PHED 133**

Walking and Jogging (1.5)

Class #: 1069

M T W 7:00 PM - 9:00 PM (LEC)

Ashlea Underwood

**PHED 137**

Tennis (1.5)

Class #: 1070

M W 9:00 AM - 12:10 PM (LEC)

Robert Hubbard

Oliver Steil

**PHED 141**

Skiing (1.5)

Class #: 1071

T 5:00 PM - 11:30 PM (LEC)

Amy Appelt

Class #: 1072

TH 5:00 PM - 11:30 PM (LEC)

Anthony Giro

Class #: 1159

W 5:00 PM - 11:30 PM (LEC)

Andrew Gallagher

**PHED 143**

Bowling – Ten Pins (1.5)

Class #: 1074

T TH 1:00 PM - 4:10 PM (LEC)

Jeffrey Moore

Class #: 1075

M W 1:00 PM - 4:10 PM (LEC)

Joseph French

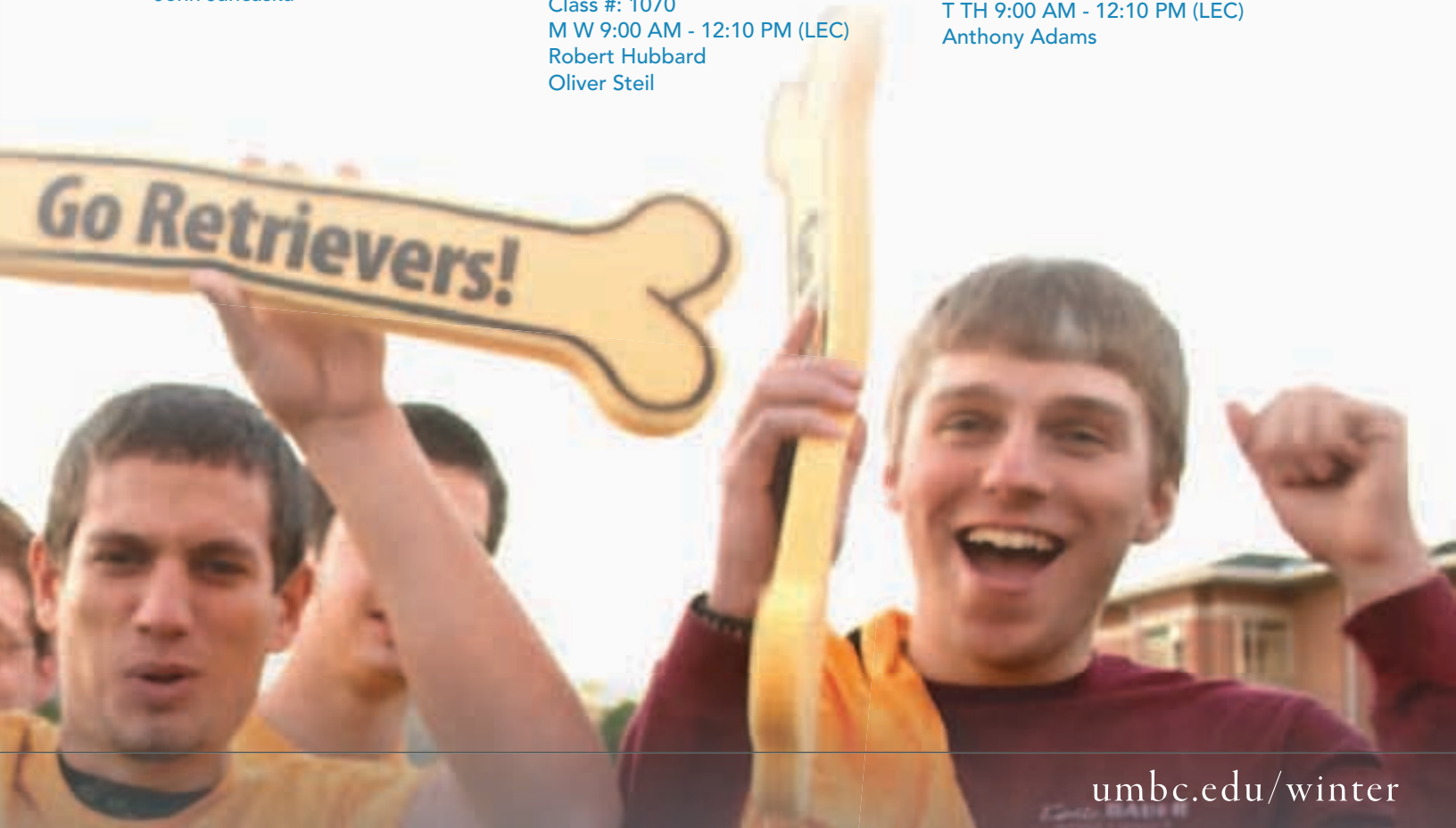
**PHED 147**

Soccer (Indoor) (1.5)

Class #: 1076

T TH 9:00 AM - 12:10 PM (LEC)

Anthony Adams



# Winter Session 2012

## WINTER SESSION COURSES

### Icon Key



Hybrid Course



Online Course



Universities at Shady Grove

### PHED 155

Yoga (1.5)

Class #: 1077

M W 1:00 PM - 4:10 PM (LEC)

Sandra Nicht

Class #: 1078

T TH 1:00 PM - 4:10 PM (LEC)

Sandra Nicht

### PHED 156

Billiards/Table Tennis (1.5)

Class #: 1079

M W 1:00 PM - 4:10 PM (LEC)

Michael D'Archangelo

Class #: 1080

T TH 10:00 AM - 1:10 PM (LEC)

David Bobb

Class #: 1081

M W 9:00 AM - 12:10 PM (LEC)

Lauren Nicholson

Class #: 1082

T TH 1:00 PM - 4:10 PM (LEC)

Robert Mumma

### PHED 191

T'ai Chi Chih® (1.5)

Class #: 1161

T TH 9:00 AM - 12:10 PM (LEC)

Sharon Sirkis

## POLITICAL SCIENCE

### POLI 260

Comparative Politics (3)



Class #: 1211

M W F

9:00 AM - 12:10 PM (LEC)

Carolyn Forestiere

### POLI 381

International Relations of the  
Asia-Pacific Region (3)



Class #: 1195



T TH 11:00 AM - 2:10 PM

(LEC)



Sunil Dasgupta

### POLI 409

Selected Topics in Political Science:  
Politics Of Human Rights (3)



Class #: 1024

Jeffrey Davis

### POLI 425

U.S. Campaigns and Elections (3)

Class #: 1204

M T TH F 1:00 PM - 4:10 PM (LEC)

Thomas Schaller

### POLI 489

Selected Topics in International  
Relations: International  
Negotiations (3)



Class #: 1025

T W TH

1:00 PM - 4:10 PM (LEC)

Brigid Starkey

## PSYCHOLOGY

### PSYC 200

Child Developmental  
Psychology (3)



Class #: 1162

T 9:00 AM - 12:10 PM (LEC)

David Schultz

### PSYC 285

Abnormal Psychology (3)

Class #: 1142

M T W TH 1:00 PM - 4:10 PM (LEC)

Robert Anderson

### PSYC 360

Psychology of Motivation (3)



Class #: 1096



M W 9:30 AM - 12:40 PM

(LEC)



Edward Rudow

### PSYC 375

Neuroanatomy (3)



Class #: 1060



6:00 PM - 7:00 PM (LEC)

Class meets twice in person:

January 3 and 25

Robert Provine

### PSYC 393

Special Topics in Psychology:  
Social Psychology & Belief  
in the Paranormal (3)

Class #: 1163

M T W F 2:00 PM - 5:10 PM (LEC)

S Resta

## RELIGIOUS STUDIES

### RLST 210

Classical Mythology (3)

Class #: 1032

M T W TH 9:00 AM - 12:10 PM (LEC)

Michael Lane



**SCIENCE****SCI 100**

Water; An Interdisciplinary Study (3)



Class #: 1190  
M W F  
9:00 AM - 12:00 PM (LEC)  
Susan Schreier



Class #: 1191  
M W F  
1:00 PM - 4:00 PM (LEC)  
Christopher Swan

**SOCIAL WORK****SOWK 240**

Information Technology in Social Work (3)



Class #: 1118  
Katherine Morris

**SOWK 360**

Social Welfare, Social Policy, and Social Work II (3)



Class #: 1154  
M T W TH  
5:00 PM - 7:45 PM (LEC)  
Carolyn Tice  
James Shannon

**SOWK 389**

Human Behavior II (3)



Class #: 1210  
M T W TH  
9:00 AM - 11:45 AM (LEC)  
Joshua Okundaye

**SOCIOLOGY****SOCY 101**

Basic Concepts in Sociology (3)



Class #: 1008  
Gul Seckin

**SOCY 335**

Terrorism and Social Violence (3)

Class #: 1140  
M T W TH 10:00 AM - 1:10 PM (LEC)  
Jeffrey Tuer

**SOCY 353**

Marriage and the Family (3)



Class #: 1005  
Meryl Damasiewicz

**SOCY 374**

Drugs and Alcohol in Society (3)

Class #: 1141  
M T W TH 1:00 PM - 4:10 PM (LEC)  
Colleen Hosler

**SOCY 397**

Selected Topics in Sociology:  
International Health (3)



Class #: 1006  
Nancy Servatius

**SPANISH****SPAN 101**

Elementary Spanish I (4)



Class #: 1014  
T W TH F  
6:00 PM - 9:10 PM (LEC)  
Maria Gomez-Rubio



Class #: 1015  
T W TH F  
9:00 AM - 12:10 PM (LEC)  
Ana Oscoz

**SPAN 102**

Elementary Spanish II (4)



Class #: 1016  
T W TH F  
1:00 PM - 4:10 PM (LEC)  
Felix Burgos

Class #: 1017

M T W TH F 9:00 AM - 12:10 PM (LEC)  
German Westphal

**SPAN 103**

Intensive Review of Elementary Spanish (4)

Class #: 1061  
M T W TH F 6:00 PM - 9:10 PM (LEC)  
Daniel Morales

**SPAN 201**

Intermediate Spanish I (4)

Class #: 1018  
T W TH F  
9:00 AM - 12:10 PM (LEC)  
Laura Liptak

Class #: 1019  
T W TH F  
6:00 PM - 9:10 PM (LEC)  
Aurora Qousar

Class #: 1177  
T W TH F  
9:00 AM - 12:10 PM (LEC)  
Sean Carmody

# Winter Session 2012

## WINTER SESSION COURSES

### Icon Key



Hybrid Course



Online Course



Universities at Shady Grove

### STATISTICS

#### STAT 121

Introduction to Statistics for the Social Sciences (4)



Class #: 1207

W 2:00 PM - 4:00 PM (DIS)

Bonnie Kegan

#### STAT 350

Statistics with Applications in the Biological Sciences (4)



Class #: 1209

M W 4:00 PM - 5:40 PM (DIS)

Mathangi Gopalakrishnan

#### STAT 351

Applied Statistics for Business and Economics (4)



Class #: 1150

T TH 4:00 PM - 5:40 PM (DIS)

Elizabeth Murrin

#### STAT 355

Introduction to Probability and Statistics for Scientists and Engineers (4)

Class #: 1147/1148

M T W TH 5:00 PM - 7:30 PM (LEC)

M T W TH 7:45 PM - 9:05 PM (DIS)

John Glezen

#### STAT 432

Statistical Computer Packages and Their Applications (1)

Class #: 1113

T TH 6:00 PM - 9:10 PM (LEC)

Merve Gurlu

## English Language Institute at UMBC



### Polish Up Your English This Winter at ELI!

- Reduce your accent
- Improve accuracy and fluency in your English writing
- Increase vocabulary and other English skills

#### Course Schedule:

January 3 -25,  
2012

#### Learn More:

[umbc.edu/eli](http://umbc.edu/eli)  
[eli@umbc.edu](mailto:eli@umbc.edu)  
410-455-2831

## UMBC

AN HONORS UNIVERSITY IN MARYLAND

### English Language Institute

## SUPPORT YOUR 2011-2012 RETRIEVERS

For more information, visit [umbcretrievers.com](http://umbcretrievers.com)

### Men's Basketball Schedule

Nov 4	College of New Jersey (Exh.)
Nov 11	<b>Penn</b>
Nov 13	at St. John's
Nov 17	<b>Loyola (MD.)</b>
Nov 19	at VMI
Nov 22	at Central Connecticut State
Nov 28	at Rutgers
Dec 1	at American
Dec 10	at Towson
<b>Dec 14</b>	<b>Morgan State</b>
<b>Dec 17</b>	<b>Rider</b>
Dec 22	at Indiana
Dec 28	at Niagara

### Women's Basketball Schedule

Nov 11	<b>Morgan State</b>
Nov 13	at Monmouth
Nov 16	at Coppin State
Nov 19	<b>Maryland</b>
Nov 22	at Loyola
Nov 27	at Towson
<b>Dec 3</b>	<b>Princeton</b>
<b>Dec 6</b>	<b>UMES</b>
<b>Dec 8</b>	<b>George Mason</b>
Dec 10	at Hampton
Dec 20	at Navy
Dec 28	vs. High Point (Hilton Garden Inn Hokie Classic)
Dec 29	vs. Cincinnati/Virginia Tech (Hilton Garden Inn Hokie Classic)

*\*Bold dates denote home games at the RAC*

*Please refer to [umbcretrievers.com](http://umbcretrievers.com) for the most up-to-date schedule.*



# Winter Session 2012

## GENERAL EDUCATION PROGRAM COURSE CHART

UMBC undergraduate students are required to complete a series of general education courses as part of the foundation of a liberal arts education. Consult the UMBC Undergraduate Catalog for full descriptions of GEP/GFR requirements. **Note:** The General Education Program (GEP) applies to students who began their higher education (after high school graduation) in the fall 2007 semester or later. Students who began their higher education between the summer 1996 and spring 2007 semesters should complete the General Foundation Requirements (GFR).

DISCIPLINE	ARTS & HUMANITIES (AH)	SOCIAL SCIENCE (SS)	MATH/SCIENCE (M/S)	SCIENCE LAB (LAB)	LANGUAGE/ CULTURE (L/C)	WRITING INTENSIVE (WI)
Africana Studies	AFST 100					
American Studies	AMST 310 AMST 320 AMST 325					
Ancient Studies	ANCS 210 ANCS 301				ANCS 210 (C) ANCS 301 (C)	
Anthropology		ANTH 211			ANTH 211 (C)	
Archaeology	ARCH 120				ARCH 120 (C)	
Dance	DANC 101				DANC 101 (C)	
Economics		ECON 101 ECON 102				
English	ENGL 190 ENGL 271					
Gender and Women's Studies	GWST 310	GWST 353				
Geography and Environmental Systems			GES 120			
History		HIST 347			HIST 381 (C)	
Linguistics	LING 190					
Mathematics			MATH 100			
Modern Languages and Linguistics	MLL 190					
Music	MUSC 100 MUSC 101 MUSC 230				MUSC 230 (C)	
Philosophy	PHIL 100 PHIL 248 PHIL 251					
Psychology		PSYC 200 PSYC 285				
Religious Studies	RLST 210				RLST 210 (C)	
Science				SCI 100		
Social Work						SOWK 360
Sociology		SOCY 101 SOCY 353				
Spanish					SPAN 201 (L)	
Statistics			STAT 121 STAT 350 STAT 351			



**UMBC**  
AN HONORS UNIVERSITY IN MARYLAND  
**Parking Facilities and  
Parking Permit Zones**

**bwtech@UMBC South**

TO ROLLING ROAD AND WILKENS AVENUE

Directions to Satellite Lots 1 and 2:

- Take Hilltop Circle to Hilltop Road and Wilkens Avenue.
- Turn left and proceed to Route 166 South toward Arbutus.
- Make a right onto Gun Road.
- The road immediately forks.
- Take the left fork and proceed a half mile to the entrance.

UMBC TRAINING CENTERS  
TECHNOLOGY CENTER  
CLEAN ENERGY TECHNOLOGY INCUBATOR

SATELLITE LOT 1  
SATELLITE LOT 2

bwtech

**Directions to Satellite Lots 1 and 2**  
(at bwtech@UMBC South)

From UMBC:  
Take Hilltop Circle to Hilltop Road and Wilkens Avenue. Turn left and proceed to Route 166 South toward Arbutus.  
Make a right onto Gun Road. The road immediately forks. Take the left fork (Rolling Road) and proceed a half mile.

**PARKING PERMIT GROUPS**

<b>A</b> COMMUTER STUDENT	<b>C</b> RESIDENT ON-STREET PARKING
<b>B</b> WALKER COMMUNITY RESIDENT	<b>A</b> COMMUTER ON-STREET PARKING
<b>C</b> RESIDENTIAL STUDENT (BESIDES WALKER)	<b>D</b> FACULTY/STAFF ON-STREET PARKING
<b>D</b> FACULTY/STAFF	<b>P</b> VISITOR PARKING (METERED SPACES)
<b>E</b> GATED FACULTY/STAFF	<b>P</b> EVENT VISITOR PARKING
<b>F</b> FRESHMAN RESIDENT STUDENT	<b>P<sub>h</sub></b> HANDICAP ACCESSIBLE PARKING

A modified zone plan is enforced during the winter session. All students should abide by the parking permit zone signage on campus. For additional information, visit [umbc.edu/parking](http://umbc.edu/parking).

## Office of Summer and Winter Programs

University of Maryland, Baltimore County  
452 Academic IV Building  
1000 Hilltop Circle  
Baltimore, MD 21250  
winter@umbc.edu  
umbc.edu/winter  
410-455-2335

For a detailed campus map, legend, designated parking and more information, visit [umbc.edu/aboutumbc/campusmap](http://umbc.edu/aboutumbc/campusmap).

## Directions to UMBC

### From Baltimore City and the southern portion of I-95:

Proceed south on I-95 to exit 47-B, Route 166, toward Catonsville and follow signs to UMBC.

**From I-695 (Baltimore Beltway):** Take exit 12-C (Wilkins Avenue west) and continue one-half mile to the entrance of UMBC on the left.

**From Washington and all points south:** Proceed north on I-95 to exit 47-B, Route 166. Follow Route 166 toward Catonsville and follow signs to UMBC.



The University of Maryland Baltimore County does not discriminate on the basis of race, color, national origin, ancestry, ethnic background, genetics, disability, age, sex, gender identity and expression, marital status, sexual orientation, religion, creed, and/or veteran status in admission to and participation in education programs and activities, or employment practices in accordance with federal laws, including, but not limited to Titles VI and VII of the Civil Right Act, Title IX of the Education Amendments, Section 504 of the Rehabilitation Act, and the Americans with Disabilities Act as amended, as well as state laws, and regulations. For inquires regarding the UMBC non-discrimination policy call: Human Relations at 410-455-1853.