

# Powerful Data Analytics for Effective Network Management



Powered by ZCorum™

MANAGED  
BROADBAND  
SOLUTIONS

1.800.909.9441  
www.ZCorum.com  
twitter.com/ZCorum



Improve productivity  
for your technicians  
in the field,  
reduce truck rolls and  
eliminate costly test  
equipment!

**NEW  
MOBILE  
APP!**

## Intuitive Modem Dashboard

Customer search tools allow you to locate accounts quickly and then view a summary of the current status of both the modem and the port to help determine whether trouble is in the home or in the plant. Data is presented real-time on a single, easy-to-read screen, including RF levels, bandwidth use, flaps and codeword errors. Other useful information available on the Modem dashboard includes the modem's MAC address, IP address, brand, model and firmware version, as well as any attached CPE devices recognized by the modem.

## Intelligent Mapping

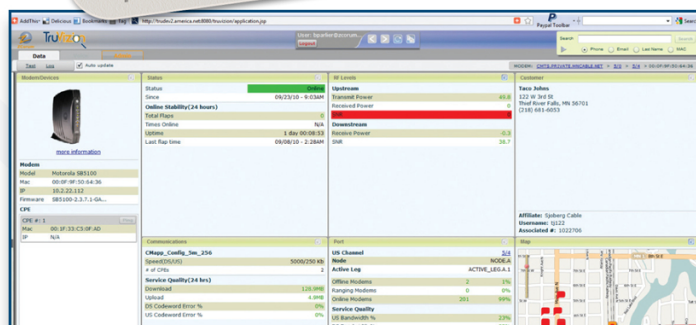
Making important decisions about your network becomes easier when you have more accurate and complete information. TruVizion also helps you reduce costs associated with truck rolls by helping you geographically pinpoint issues at the root cause. By mapping groups of customers, you can quickly determine if a problem exists in the head end, a node or at the customer's residence, making it easy to deploy the right technicians and equipment to the right location in a timely manner.

## Comprehensive Network Diagnostics

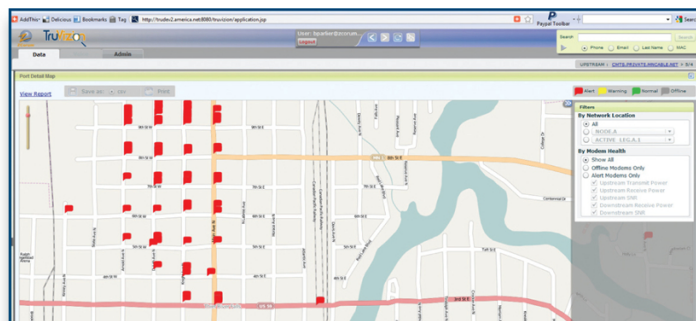
With one click you can access TruVizion's CMTS or Port diagnostics screens. Color-coded bars clearly identify the highest priority issues regarding current RF levels, bandwidth utilization, SNR, modem status and codeword errors, or view key historical data about any upstream or downstream channel plotted over time on user-friendly, interactive graphs.

## Powerful Reporting

TruVizion includes drill-in reporting that helps you visualize subscriber and plant issues. See all customers affected and map their locations with a single click. View RF Levels as they stream live, or plot the historical data over the last 24 hours, 7 days, 30 days or 90 days. With one more click you can overlay graphs from five nearby modems to compare levels and look for corresponding trends. Click and drag on any chart to drill-in further for a more granular look and all other charts will automatically adjust to the new time frame for easy comparison.



Dashboard data is retrieved from the modem instantly, at the moment it is requested, and then automatically updated every 60 seconds.



Filter the map display by offline or out-of-spec modems, or by a specific RF level, node or active leg.



TruVizion compares the RF levels of nearby modems, allowing users to determine if the issue is specific to one customer or impacting many customers.

To learn more about TruVizion data analytics software, and to see real-world case studies on the ways TruVizion can help you manage your cable broadband network more effectively, visit [TruVizion.com](http://TruVizion.com).