

IFS-10

ARC FUSION SPLICER

Designed by INNO Instrument, Korea
Made in Korea



The Fiber Master

- 2.2 kg weight (without Battery)
- Harsh weather conditions adaptability
- Friendly smart GUI
- Large Battery capacity : 350 times
- Quick optimize menu
- High precision splicing
- USB master port, easy to upgrade software
- Operate in Bi-directional view

The Characteristic of IFS-10



* Easy electrodes exchange



* Heating oven with zoom window



* Bright LED for night



* Easy changeable Holder for Multi-functional Splicing



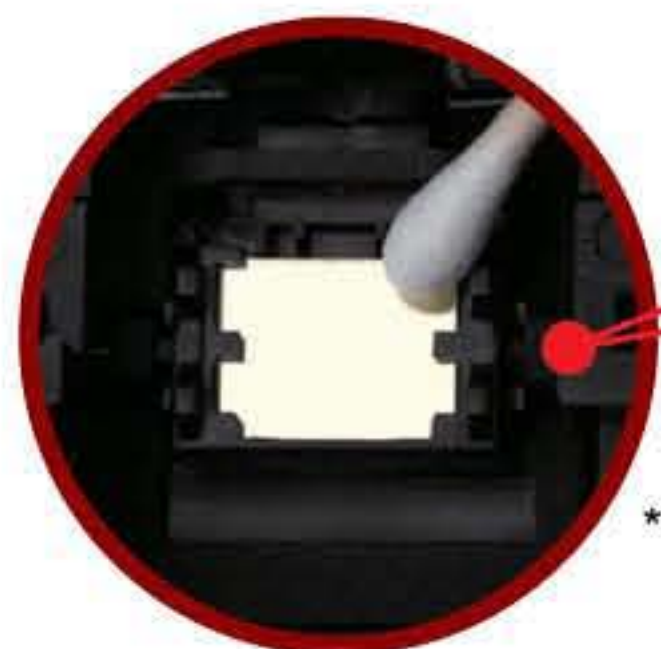
* Battery:
Typical 350 cycles



* Illuminated keypad
Ultra durable more than 1 Million times



* Easy to clean the camera

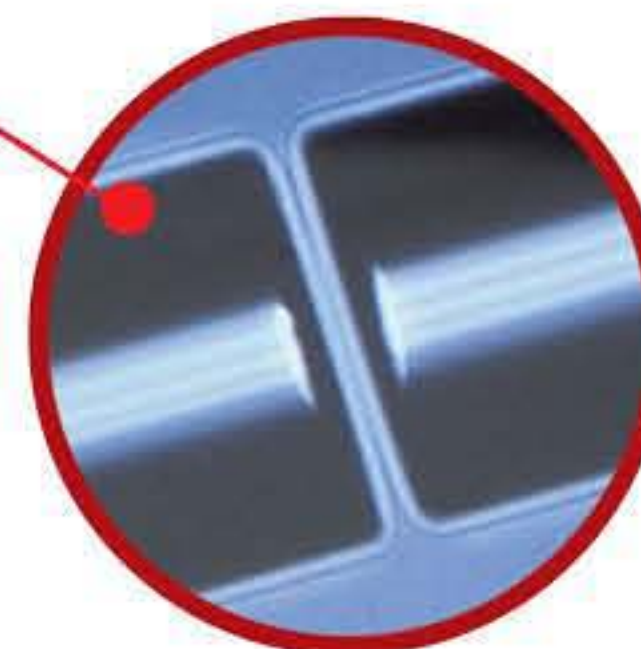


* Easy to clean the mirror
(Anti-fog treated mirror)

* WATERPROOF, DUSTPROOF, ANTI-SHOCK, WINDPROOF,

High Attitude works well in harsh weather conditions

* Anti-shock works well in 1 m height drop



* Protected by Tempered glass LCD
* Clear core image
* Friendly smart GUI



* Independent clamp motion

Specifications

- 2.2KG (without battery), light and handy, user friendly, easy to operate
- Splicing Method: Core alignment
- Applicable fiber:
SM(ITU-TG.652), MM(ITU-TG.651), DS(ITU-T G.653), NZDS(ITU-T G.655), G657A, G657B
- Average loss: SM(0.02dB), MM(0.01dB), DS(0.04 dB), NZDS(0.04 dB)
- Return loss: >>60 dB
- Splice time: SM fusion average 9s
- Cleaved length: The fiber whose coat-diameter is less than 0.25mm: 8-16mm
The fiber whose coat-diameter is larger than 0.25mm: least 16mm
- Operating environment: elevation 0-5000meter, 95% relative humidity, -10~50°C
- Magnification: XY style: 150 power, X/Y: 300 power
- Monitor: 2CCD camera system, 5 inch LCD
- Splice Programs: 100 user mode

- Coating Diameter: 100-1000 μ m
- Cladding Diameter: 80-150 μ m
- Splice memory: max 2000 records
- Fiber Display: X/Y or XY, single X.Y
- Pull test: 1.96~2.25N(standard)
- Heating programs: Preset 10 heating modes
- Heating time: FP-03 typical heating time 30s
- Protection sleeve: 60mm,40mm
- Battery: Typical full cycle 350 times
- Power supply: AC 100-240V input or, DC 10-15V
- Data output: USB master device and COM
- Wind protection: The max wind speed 15m/s
- size: 155x130x143mm(excluding rubber bumper)



Friendly smart GUI



Back

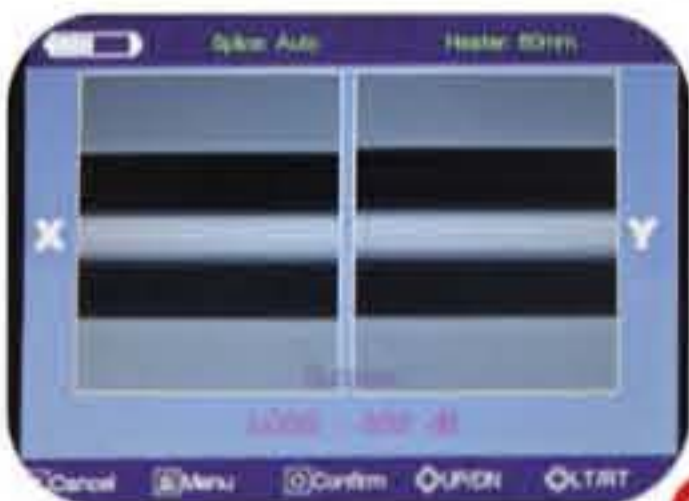
Top



①



②



③



FRONT

Splice Loss

- ① 0.00dB : 10 times / 100 times
- ② 0.01dB : 70 times / 100 times
- ③ 0.02dB : 20 times / 100 times

Software Back up system



TWO-WAY Multi task Support

Back and front view to match user's work preference.



Standard Package Kit

	No.	Quantity
IFS-10 Splicer	IFS-10	1
High Precision Cleaver	VF-78	1
AC adapter	ACM-22	1
Battery pack	LBT-20	1
Battery charger	JS-126300-X	1
Power Cable	ACC-25	1
Spare-electrodes	E-27	1
Carrying case	NBX-35	1
Cooling tray	CG-22	1
Cigarette lighter Cable	CJ-11	1
RS-232 Cable	RS-11	1

N **M** **A** **K** **I** **N** **G** **O** **N** **E** **W** **O** **R** **L** **D** **!**
N **O** **T** **J** **U** **S** **T** **C** **O** **N** **N** **E** **C** **T** **E** **D** **F** **I** **B** **E** **R** **B** **U** **T** **W** **O** **R** **L** **D** **!**



**IFS-10
Software CD**

- * User's Manual
- * PC Software



INNO INSTRUMENT, Inc.
 65-3, Sangdaewondong, Jungwongu,
 Sungnam-si, Kyeonggi-do, Korea
 462-807
 Tel: +82 31 742 8755
 Fax: +82 31 742 8799
 Email: info@innoinstrument.com
 www.innoinstrument.com