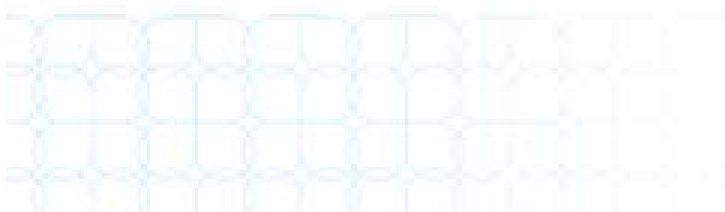


Allsup Disability Study: Income at Risk

Examining income risk factors
for people with disabilities

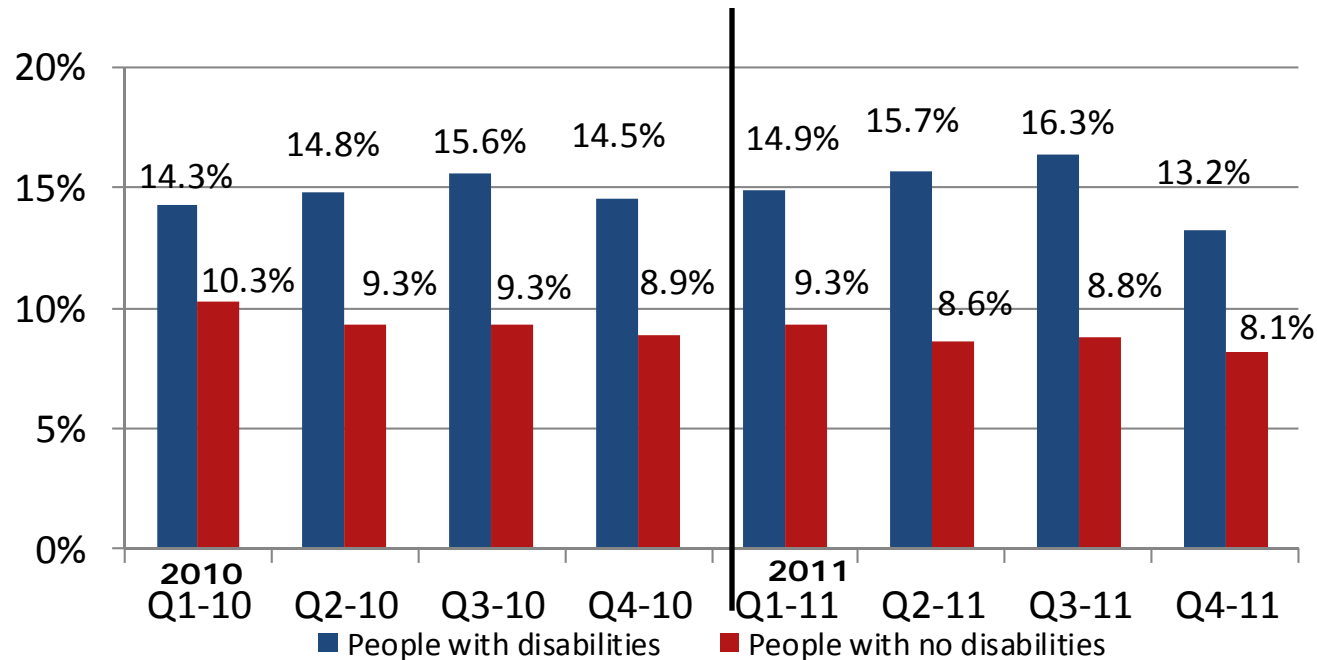
2011 Fourth Quarter and Full Year Review
January 2012



Allsup Disability Study: Income at Risk

The unemployment rate for people with disabilities continues to be much higher than for those with no disabilities; however, it came down significantly at the end of 2011.

2010 and 2011 quarterly unemployment rates



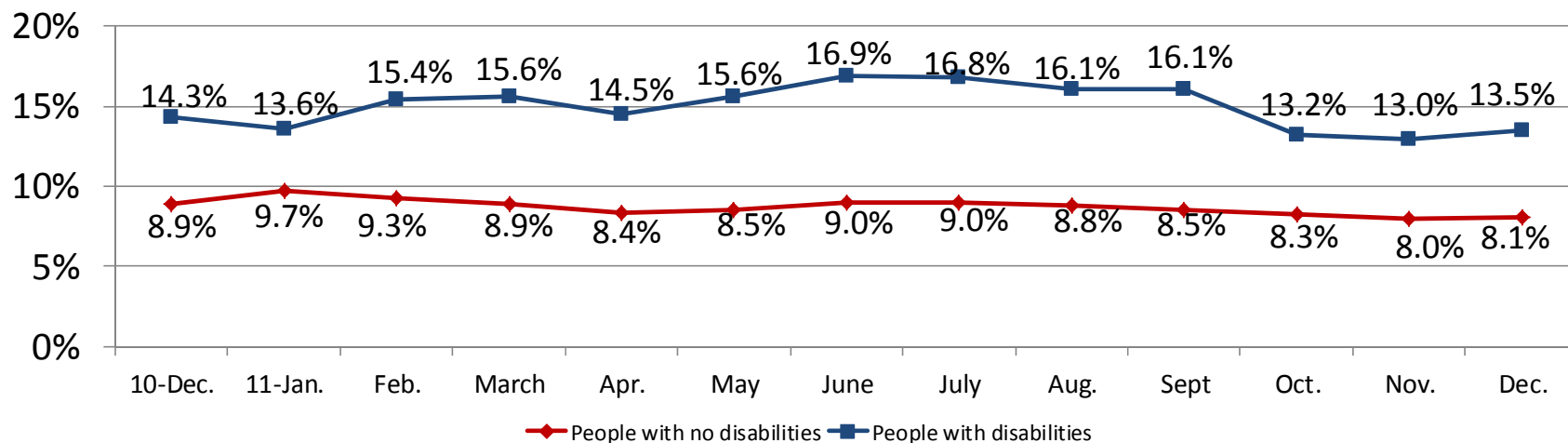
Unemployment rates for people with disabilities remained high throughout 2011. During the third quarter of 2011, the unemployment rate for people with disabilities exceeded 16 percent for the first time in two years. However, in the fourth quarter, it then dropped to the lowest rate since the fourth quarter of 2008 – when the U.S. Bureau of Labor Statistics began reporting the disability unemployment rate. Still, people with disabilities experienced an unemployment rate more than 60 percent higher than people with no disabilities in the fourth quarter of 2011.

Source: Allsup analysis based on U.S. Bureau of Labor Statistics data; not seasonally adjusted and includes those 16 and older.

Allsup Disability Study: Income at Risk

The unemployment rate for people with disabilities and those with no disabilities is lower since the third quarter of 2011.

13-month unemployment rates



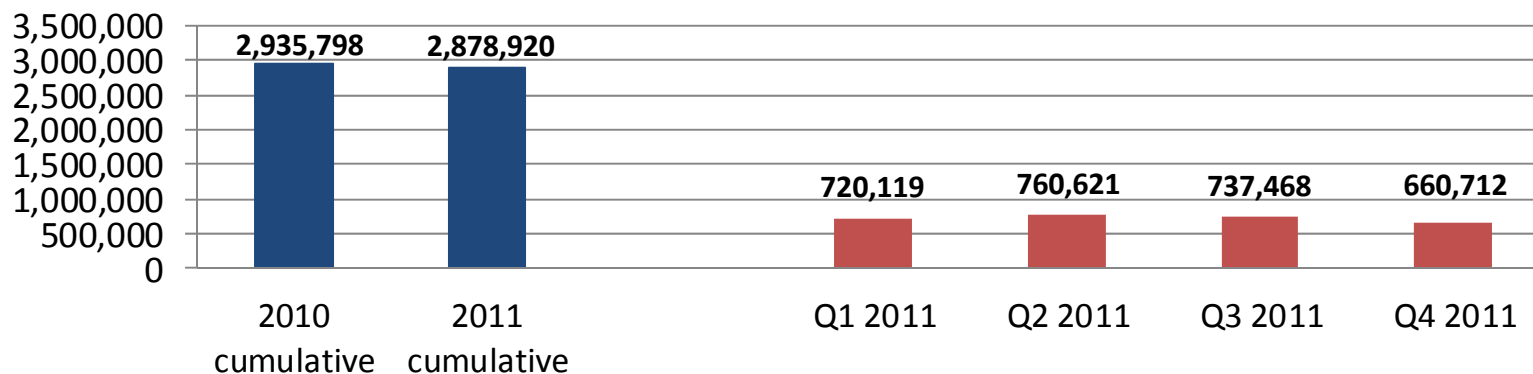
Throughout the final quarter of 2011, unemployment for people with disabilities, while still high, was measurably lower than at mid-year. People with disabilities consistently had higher rates of unemployment and greater volatility in their unemployment rates than those without disabilities throughout 2011.

Source: Allsup analysis based on U.S. Bureau of Labor Statistics data; not seasonally adjusted and includes those 16 and older.

Allsup Disability Study: Income at Risk

Social Security Disability Insurance applications decreased by 1.98 percent from 2010 to 2011.

SSDI applications

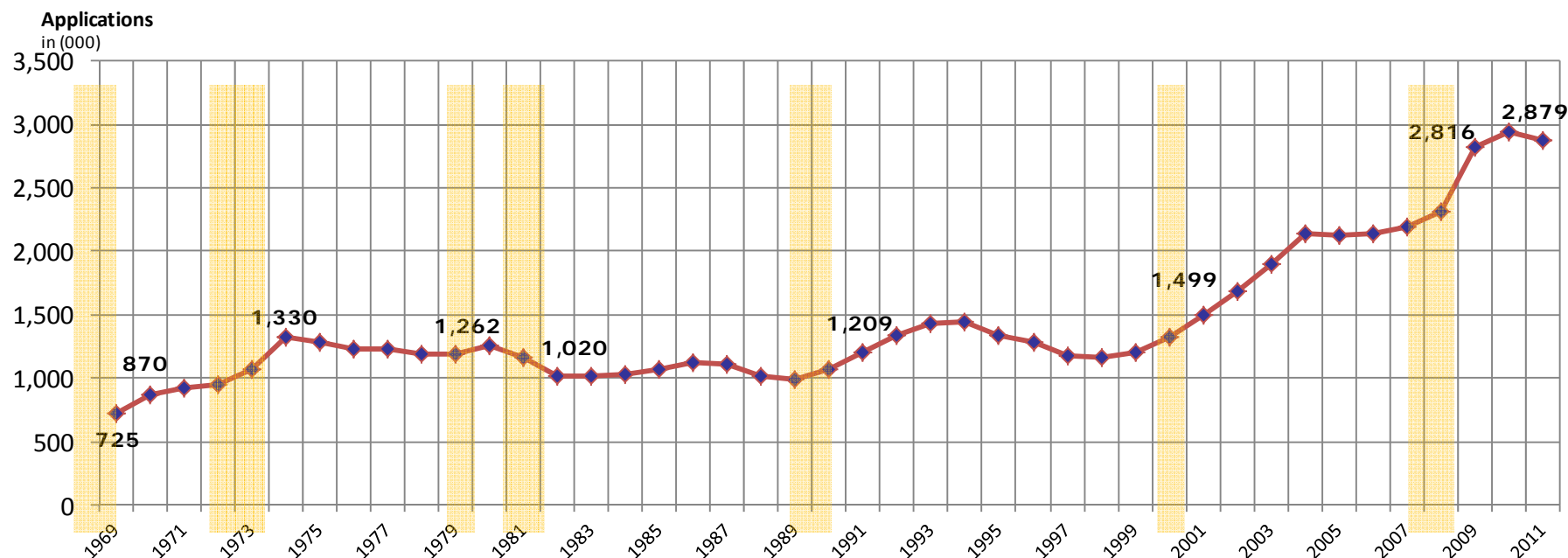


The number of people applying for Social Security Disability Insurance slowed in the fourth quarter of 2011. Overall, from 2010 to 2011, the number of people applying for SSDI benefits declined by 1.98 percent.

Source: Allsup analysis based on Social Security Administration data.

Recessions and SSDI Applications 1969-2011

SSDI applications tend to increase during recessions.



The level of SSDI applications has grown with each recession, except for the early 1980s. The latest recession ended in June 2009. However, SSDI applications continued to increase until 2011. In 2011, nearly 2.88 million people applied for SSDI, down from the high of nearly 2.94 million in 2010. Other factors, such as the aging work force, contribute to the SSDI application rate. Seven recessions are documented for this period (shaded in yellow):

Dec. 1969-Nov. 1970
Nov. 1973-March 1975

Jan. 1980-July 1980
July 1981-Nov. 1982

July 1990-March 1991
March 2001-Nov. 2001

Dec. 2007-June 2009

Source: Allsup analysis based on Social Security Administration and National Bureau of Economic Research data.

Allsup Disability Study: Income at Risk

Background information

About Allsup:

Allsup is a nationwide provider of Social Security disability, Medicare and Medicare Secondary Payer compliance services for individuals, employers and insurance carriers. Founded in 1984, Allsup employs more than 800 professionals who deliver specialized services supporting people with disabilities and seniors so they may lead lives that are as financially secure and as healthy as possible. The company is based in Belleville, Ill., near St. Louis. For more information, visit www.Allsup.com.

Allsup Disability Study:

Allsup has been conducting the quarterly "Allsup Disability Study: Income at Risk" since 2009.

Fourth quarter 2011 report: <http://www.allsup.com/Portals/4/allsup-study-income-at-risk-q4-11.pdf>

Archive: <http://www.allsup.com/about-us/news-room/income-at-risk-report-archive.aspx>

Source materials:

U.S. Bureau of Labor Statistics, http://www.bls.gov/schedule/archives/empsit_nr.htm#2011

Social Security Administration, <http://www.ssa.gov/OACT/STATS/dibStat.html>

Allsup contacts:

Rebecca Ray, (800) 854-1418 ext. 65065, r.ray@allsupinc.com

Mary Jung, (773) 429-0940, mtjung@msn.com

