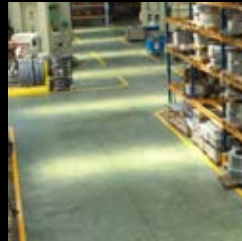




CREATIVE SAFETY SUPPLY FLOOR MARKING GUIDE



INDUSTRIAL FLOOR MARKING COLOR CODE REFERENCE CHART

COLOR	APPLICATION
YELLOW	AISLEWAYS; TRAFFIC LANES; WORK CELLS
WHITE	PRODUCTION; RACKS, MACHINES, CARTS, BENCHES AND ALL OTHER EQUIPMENT THAT DOES NOT FALL UNDER ANY OTHER COLOR GUIDELINES
RED	DEFECT/SCRAP/RED TAG AREAS
ORANGE	MATERIALS OR PRODUCT INSPECTION; ENERGIZED EQUIPMENT WARNING
GREEN	RAW MATERIALS; WORKS-IN-PROGRESS; FINISHED GOODS
BLUE	RAW MATERIALS; WORKS-IN-PROGRESS; FINISHED GOODS
BLACK	RAW MATERIALS; WORKS-IN-PROGRESS; FINISHED GOODS
RED/WHITE HAZARD	AREAS TO BE KEPT CLEAR FOR SAFETY REASONS (AROUND EMERGENCY ACCESS POINTS, ELECTRICAL PANELS, FIREFIGHTING EQUIPMENT, ETC)
BLACK/WHITE HAZARD	AREAS TO BE KEPT CLEAR FOR OPERATIONAL PURPOSES (NON-SAFETY RELATED)
BLACK/YELLOW HAZARD	TO DESIGNATE AREAS THAT PRESENT SPECIAL PHYSICAL OR HEALTH RISKS TO EMPLOYEES. INDICATES THAT EXTRA CAUTION IS TO BE EXERCISED WHEN WORKING IN THE AREA.

OSHA and ANSI make these color recommendations so it is easy for someone who isn't familiar with your facilities' color scheme to make quick and educated decisions.

If you decide to go with another color system other than what is recommended, you must make a chart that lays out the colors you are using, and what they mean. This must be then posted in a conspicuous spot where all employees are able to view it.

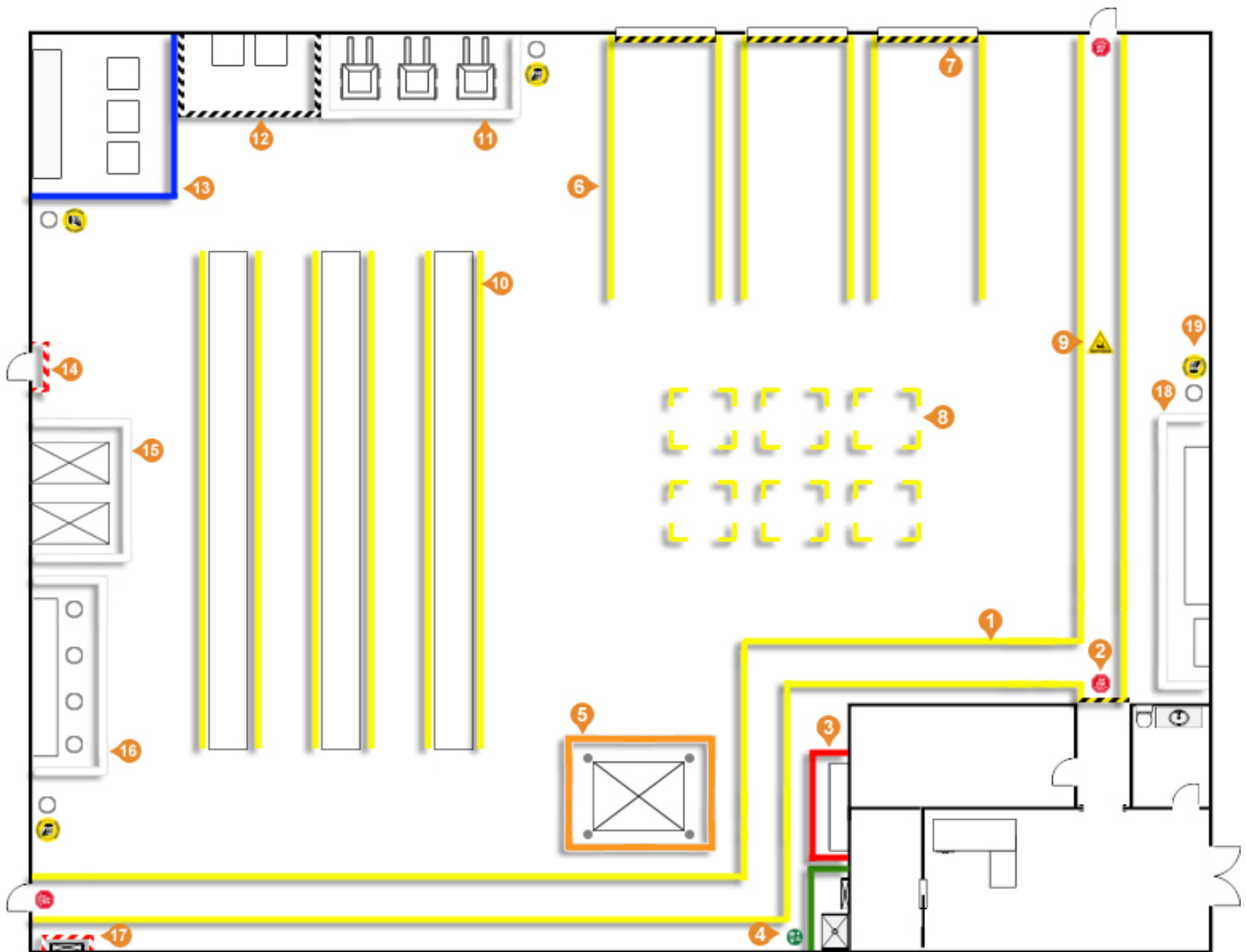
QUESTIONS?

BY PHONE: (866) 777-1360

BY EMAIL: INFO@CREATIVESAFETYSUPPLY.COM

FLOORMARKING, LEAN, 5S PRODUCTS AND MORE: WWW.CREATIVESAFETYSUPPLY.COM

FLOORMARKING - EXAMPLE LAYOUT



- | | |
|--|--|
| 1 Walkways (Yellow Lines) | 11 Forklift Parking (White Lines) |
| 2 Warehouse Entry (Black/Yellow Stripe Lines, 'STOP' Floor Sign) | 12 Repair Area (Black/White Stripe Lines) |
| 3 Red Tag/Defect Area (Red Lines) | 13 Parts Area (Blue Lines) |
| 4 First Aid, Eyewash Station (Green Lines, Floor Sign) | 14 Emergency Exit (Red/White Stripe Lines) |
| 5 Energized Equipment (Orange Lines) | 15 Equipment/Machinery (White Lines) |
| 6 Loading Dock (Yellow Lines) | 16 Workbench/Work Area (White Lines) |
| 7 Bay Openings (Black/Yellow Stripe Lines) | 17 Electrical Box (Red/White Stripe Lines) |
| 8 Pallet Area (5S Corners/T's) | 18 Maintenance Area (White Lines) |
| 9 Forklift Crossing ('Caution-Forklift' Floor Sign) | 19 Trash Cans ('Trash Can' Floor Sign) |
| 10 Rack Aisles (Yellow Lines) | |

QUESTIONS?

BY PHONE: (866) 777-1360

BY EMAIL: INFO@CREATIVESAFETYSUPPLY.COM

FLOORMARKING, LEAN, 5S PRODUCTS AND MORE: WWW.CREATIVESAFETYSUPPLY.COM



Tips for Floor Marking

OSHA Regulations require that permanent aisles and passageways must be marked- ANSI Z535.2 Safety Color Code designates Yellow as the caution color to be used for marking physical hazards such as stumbling, falling or tripping points.

Industrial Floor Marking Tapes are usually recognized as the most convenient and inexpensive way to mark aisles since painted lines tend to chip, peel and crack especially in areas with heavier traffic.

Aisle Width

OSHA's general requirement for aisles and passageways is that "sufficient safe clearances" must be provided where mechanical equipment is used. The width required will vary depending upon how the aisle is utilized in the workplace- as aiseways that utilize forklift and truck traffic will need to be wider than aisles for pedestrian traffic. A good average size is 36 inches.

Additionally, inside storage rooms containing flammable and combustible liquids, aisles must be at least three feet wide, and for emergency exit access points, 28 inches is the minimum allowed width.

Tape Width

The required minimum width for facility aisle and floor marking lines is 2"- therefore any width above that is considered acceptable by OSHA and ANSI. Typical applications use tape in 2" - 6" width.

We're Here To Help!

If you have any questions regarding floor marking regulations or products, please give us a call or send us an email- we'd be glad to assist you! We can be reached M-F, toll-free at **(866) 777-1360**, or via email: info@creativesafety.com.

QUESTIONS?

BY PHONE: (866) 777-1360

BY EMAIL: [INFO@CREATIVESAFETY.COM](mailto:info@creativesafety.com)

FLOORMARKING, LEAN, 5S PRODUCTS AND MORE: WWW.CREATIVESAFETY.COM



CUSTOMER FAVORITES



SafetyTac Industrial Floor Marking Tape

Price: Starting at \$95.00 **Size:** 2" - 6"

Our #1 rated Industrial Floor Marking Tape!

SafetyTac Tape is the perfect solution for almost any floor marking project you have- It's thin profile, 2-stage tapered edge and extra-strong adhesive protect it well against even the heaviest forklift and truck traffic.



SafetyTac LEAN Industrial Floor Marking Tape

Price: Starting at \$65.00 **Size:** 2" - 4"

Based on our top-selling SafetyTac Industrial Floor Marking Tape, the all-new SafetyTac LEAN Tape is an remarkable 50% thinner than original SafetyTac Tape!

Despite it's thin profile, it is engineered to withstand heavy forklift traffic and provides exceptional resistance to water, oils, greases and most other chemicals.



5S Vinyl Tape

Price: Starting at \$3.99 **Size:** 1/4"-6"

Description: Promote organization and safety by identifying areas with this multi-purpose 5S & floor marking tape.



SafetyTac 5S Markings

Price: \$50.00/pkg

Description: Quickly and durably mark pallets, crates, walkways, zones and much more with these versatile 5S markings.



Custom Foam Tool Kit

Price: \$49.95

Description: Create a custom holders for tool kits or drawers. Use two colors to create 5S shadow board visual management.

Check out the other free guides available for download on our website

5S - Forklift Safety - Kaizen - Kanban - Spill Kit

www.creativesafety.com



CREATIVE SAFETY SUPPLY, LLC
WWW.CREATIVESAFETYSUPPLY.COM
INFO@CREATIVESAFETYSUPPLY.COM

TOLL FREE: **(866) 777-1360**