

RT - XXX - XX - XX

FRAME SIZE
 - 070
 - 100
 - 120

TORQUE IN-LBS

SHAFT END TYPE
 01- FLAG
 02- STRAIGHT
 03- SHAFT, EXPOSED

070
 - 03
 - 04
 - 05
 - 06
 - 07
 - 08

100
 - 08
 - 12
 - 16
 - 20

120
 - 20
 - 30
 - 40
 - 50

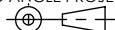
NOTES:

1. APPLICATION CONDITIONS REFERENCE (USER MUST DETERMINE FITNESS FOR USE IN APPLICATION).
2. ENVIRONMENT CONDITIONS: 0° to 60°C.
3. PRODUCT TORQUE SPECIFICATION: ±20% DYNAMIC.
4. LIFE: 50,000 CYCLES. ONE CYCLE CONSISTS OF 90° CW AND 90° CCW AT 10% DUTY CYCLE FOR SPEEDS LESS THAN 100RPM.
- [5] HINGE DESIGNED TO SUPPORT A MINIMAL AXIAL FORCE IN DIRECTION SHOWN, NOT DESIGNED TO SUPPORT AXIAL FORCE IN THE OPPOSITE DIRECTION.
6. MATERIALS:
 ZINC DIE CAST HOUSINGS
 STEEL STRAIGHT HOUSING
 HARDENED STEEL SHAFT
 HARDENED STEEL TORQUE CLIPS
 MINERAL OIL BASED LUBRICANT
7. FINISH:
 NON-COSMETIC PLAIN.
 CLEAR CHROMATE RUST PREVENTATIVE COATING ON THE STRAIGHT SHAFT.
8. SHIP ANGLE 0° ±5° BETWEEN HOUSINGS.
9. TOLERANCE UNLESS SPECIFIED IS ±0.15.
10. CONTACT REELL PRECISION MFG FOR PRESS FIT RECOMMENDATIONS FOR EXPOSED "SHAFT" VERSION ON PAGE 4.
- [11] DESIGNED TO ACCEPT M3, #4 OR #5 SCREW FOR RT-70 & M4 OR #8 FOR RT-100 & RT-120 OR EQUIVALENT. (RT-70 USE LOW HEAD VERSION IF HEAD MUST BE SUBFLUSH.)

SPECIFICATION SUBJECT TO CHANGE

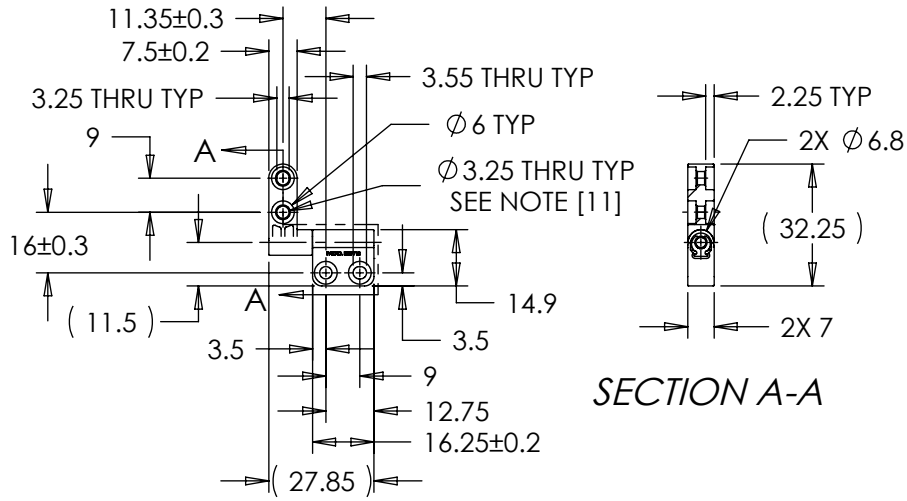
UNLESS SPECIFIED TOLERANCE ±0.15 INTERPRET PRINT PER ASME Y14.5M-1994 THIS PRINT IS THE CONFIDENTIAL PROPERTY OF REELL PRECISION MFG.

THIRD ANGLE PROJECTION



| LEVEL | DESCRIPTION | | DRAWN | DATE | APPROVED |
|--|-------------|---------------|--|----------------------|----------|
| DRAWN: | TLS | DATE: 23JUN11 | REFERENCE: 83100-XXX | | |
| CHECKED: | BLJ | DATE: 12DEC11 | TITLE: SALES DRAWING RT HINGE ASSEMBLY | | |
| APPROVED: | BLJ | DATE: 12DEC11 | PART NO: RT-SERIES | | |
| REVISED: | 27FEB12 | DIMS: mm | REV: 06A | | |
| REELL PRECISION MANUFACTURING 1259 WILLOW LAKE BOULEVARD SAINT PAUL, MINNESOTA 55110-5103, USA | | SCALE: 1:2 | | DO NOT SCALE DRAWING | |
| | | | | SHEET 1 OF 4 | |

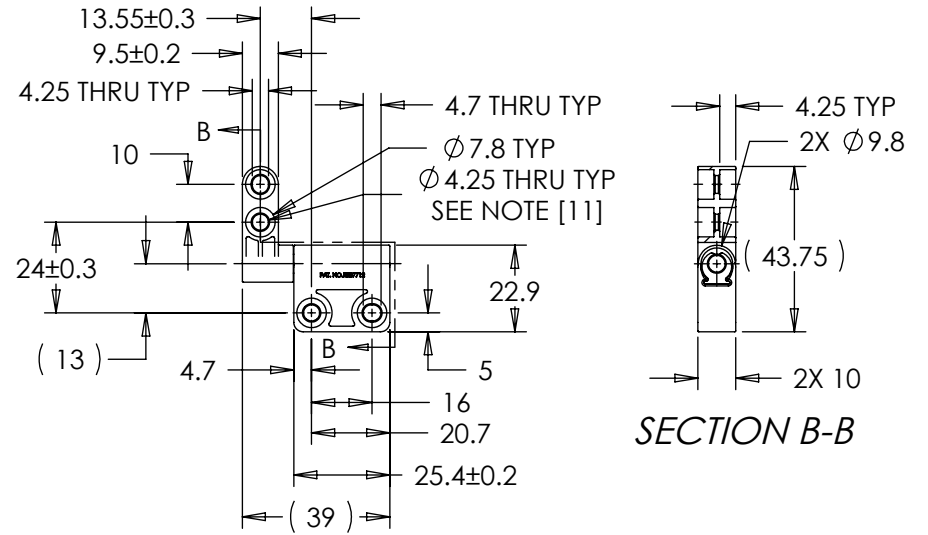
RT-070



SECTION A-A

APPROXIMATE WEIGHT: 16 GRAMS

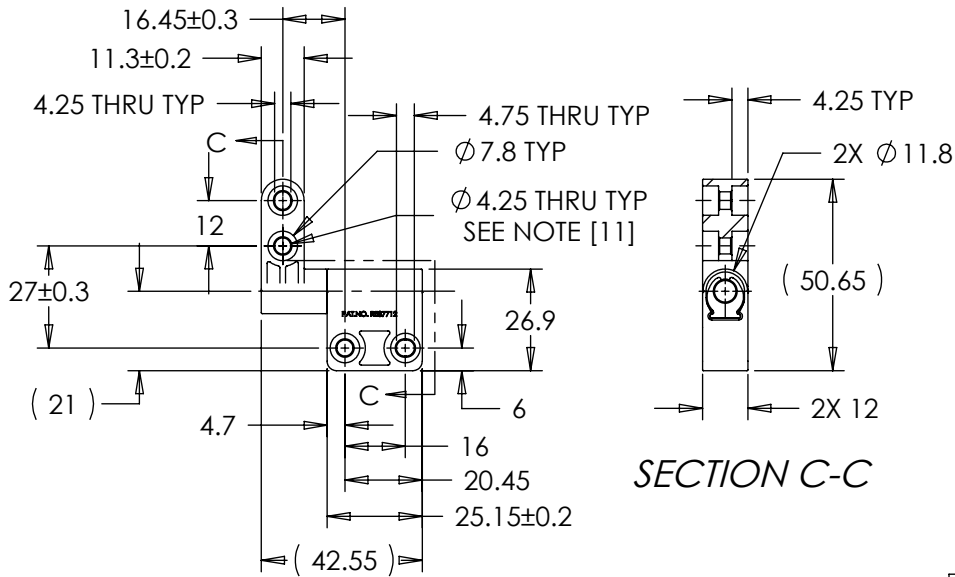
RT-100



SECTION B-B

APPROXIMATE WEIGHT: 42 GRAMS

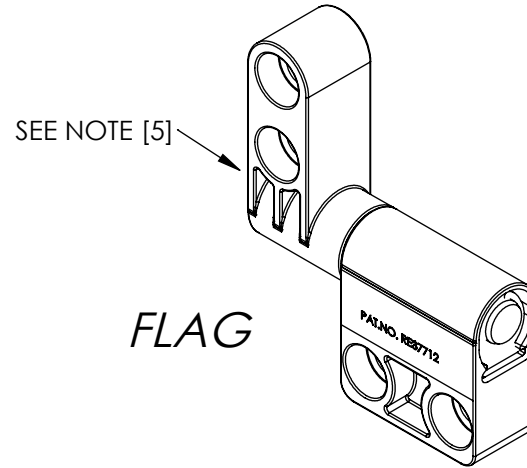
RT-120



SECTION C-C

APPROXIMATE WEIGHT: 66 GRAMS

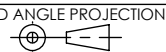
SPECIFICATION SUBJECT TO CHANGE



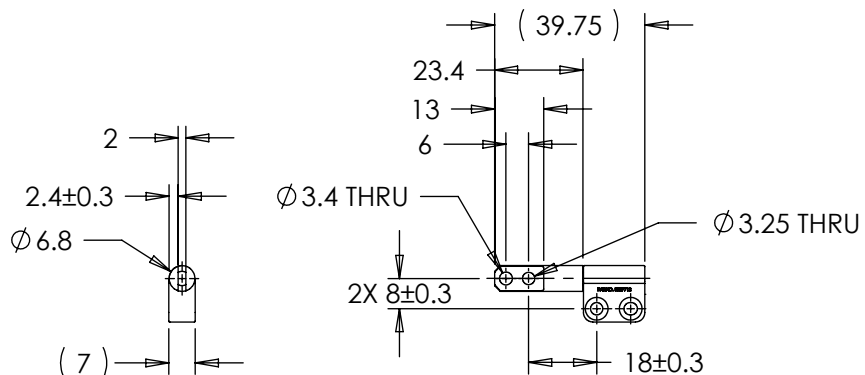
FLAG

| LEVEL | DESCRIPTION | | DRAWN | DATE | APPROVED |
|------------------------|-------------|--|--|--------------|----------|
| DRAWN: | TLS | DATE: 23JUN11 | REFERENCE: 83100-XXX | | |
| CHECKED: | BLJ | DATE: 12DEC11 | TITLE: SALES DRAWING RT HINGE ASSEMBLY | | |
| APPROVED: | BLJ | DATE: 12DEC11 | PART NO: RT-SERIES | | |
| REVISED: | 27FEB12 | DIMS: mm | REV: 06A | | |
| REELL | | REELL PRECISION MANUFACTURING 1259 WILLOW LAKE BOULEVARD SAINT PAUL, MINNESOTA 55110-5103, USA | | | |
| THIRD ANGLE PROJECTION | | SCALE: 1:2 | DO NOT SCALE DRAWING | SHEET 2 OF 4 | |

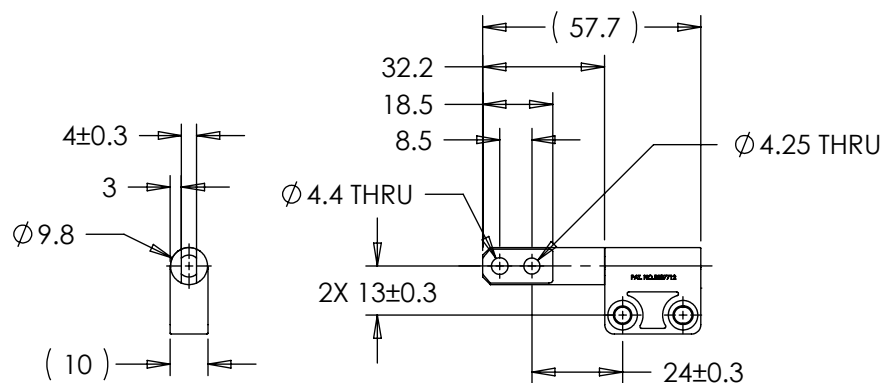
UNLESS SPECIFIED TOLERANCE ±0.15 INTERPRET PRINT PER ASME Y14.5M-1994 THIS PRINT IS THE CONFIDENTIAL PROPERTY OF REELL PRECISION MFG.



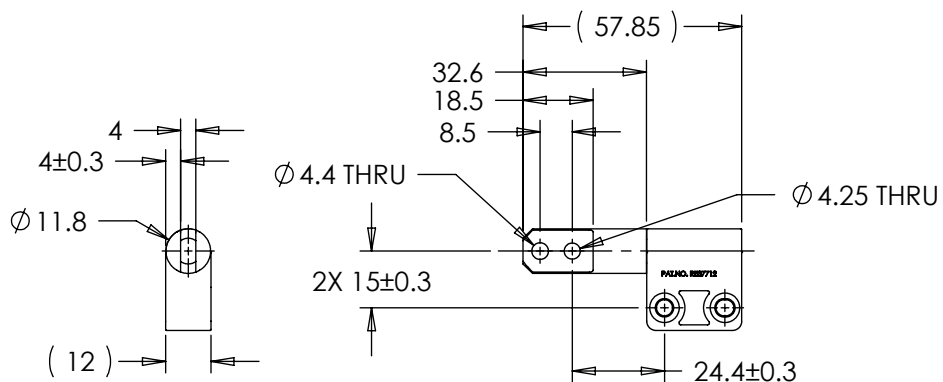
RT-070



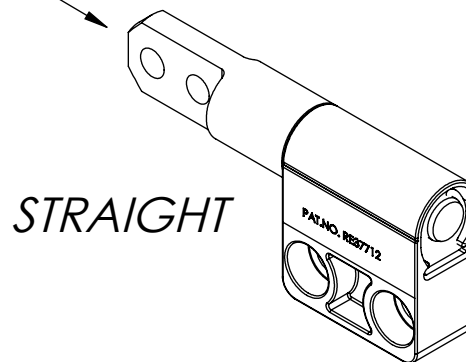
RT-100



RT-120



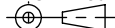
SEE NOTE [5]



SPECIFICATION SUBJECT TO CHANGE

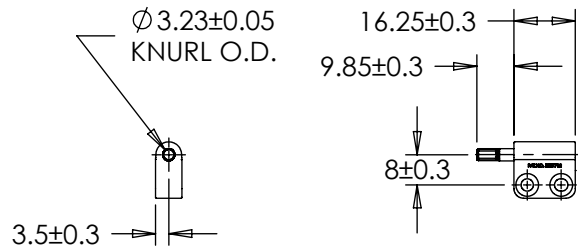
UNLESS SPECIFIED TOLERANCE ± 0.15
 INTERPRET PRINT PER ASME Y14.5M-1994
 THIS PRINT IS THE CONFIDENTIAL PROPERTY OF REELL PRECISION MFG.

THIRD ANGLE PROJECTION



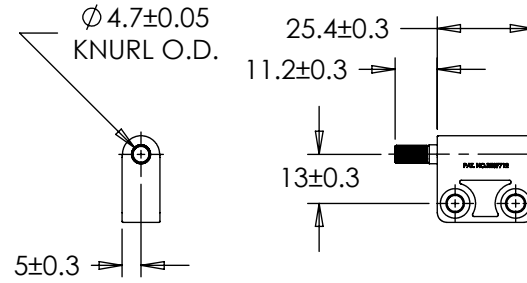
| LEVEL | DESCRIPTION | | DRAWN | DATE | APPROVED |
|--|-------------|---------------|--|----------------------|--------------|
| DRAWN: | TLS | DATE: 23JUN11 | REFERENCE: 83100-XXX | | |
| CHECKED: | BLJ | DATE: 12DEC11 | TITLE: SALES DRAWING RT HINGE ASSEMBLY | | |
| APPROVED: | BLJ | DATE: 12DEC11 | PART NO: RT-SERIES | | |
| REVISED: | 27FEB12 | DIMS: mm | REV: 06A | | |
| REELL PRECISION MANUFACTURING 1259 WILLOW LAKE BOULEVARD SAINT PAUL, MINNESOTA 55110-5103, USA | | | SCALE: 1:2 | DO NOT SCALE DRAWING | SHEET 3 OF 4 |

RT-070



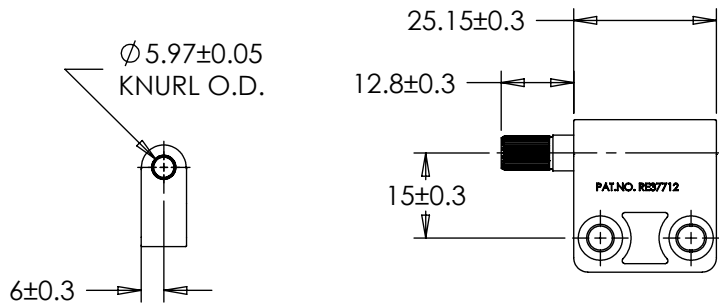
APPROXIMATE WEIGHT: 9 GRAMS

RT-100

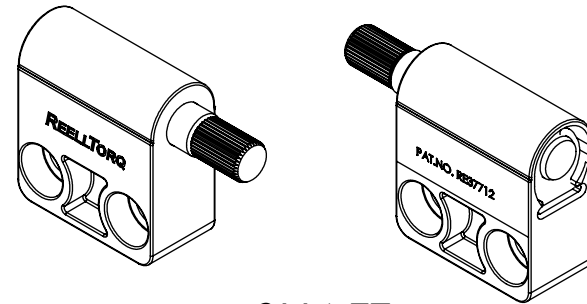


APPROXIMATE WEIGHT: 27 GRAMS

RT-120



APPROXIMATE WEIGHT: 43 GRAMS

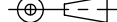


SHAFT

SPECIFICATION SUBJECT TO CHANGE

UNLESS SPECIFIED
TOLERANCE ± 0.15
INTERPRET PRINT PER
ASME Y14.5M-1994
THIS PRINT IS THE
CONFIDENTIAL PROPERTY
OF REELL PRECISION MFG.

THIRD ANGLE PROJECTION



| LEVEL | DESCRIPTION | | DRAWN | DATE | APPROVED |
|------------|-------------|--|---|--------------|----------|
| DRAWN: | TLS | DATE: 23JUN11 | REFERENCE: 83100-XXX | | |
| CHECKED: | BLJ | DATE: 12DEC11 | TITLE: SALES DRAWING RT HINGE ASSEMBLY | | |
| APPROVED: | BLJ | DATE: 12DEC11 | PART NO: RT-SERIES | | |
| REVISED: | 27FEB12 | DIMS: mm | REV: 06A | | |
| | | REELL PRECISION MANUFACTURING 1259 WILLOW LAKE BOULEVARD SAINT PAUL, MINNESOTA 55110-5103, USA | | | |
| SCALE: 1:2 | | DO NOT SCALE DRAWING | | SHEET 4 OF 4 | |