

# MORPETH MANSIONS

Westminster SW1

**Knight Frank**







**A beautifully presented duplex apartment with amazing views, available for rent in the heart of Westminster.**

Formerly the home of Sir Winston Churchill, this historic apartment located on the fifth and sixth floor, overlooks Westminster Cathedral. This is a great opportunity to rent one of the most unique properties in Central London.

The apartment benefits from three interconnecting reception rooms, perfect for entertaining, a large private terrace, porter and lift access.

### **Situation**

The apartment is in a great location, being close to the transport links of Victoria station and is just a short walk away from the amenities of Belgravia and Knightsbridge.

### **Accommodation & Amenities**

**Master bedroom with en suite ♦ 2 further bedrooms with en suite ♦ 1 further bedroom  
Guest cloakroom ♦ 3 reception rooms  
Kitchen/breakfast room ♦ Entrance hall ♦ Study  
Roof terrace ♦ Lift access ♦ Porter services**

### **Terms**

**Term:** Available unfurnished for a long let

**Rent:** Price on application

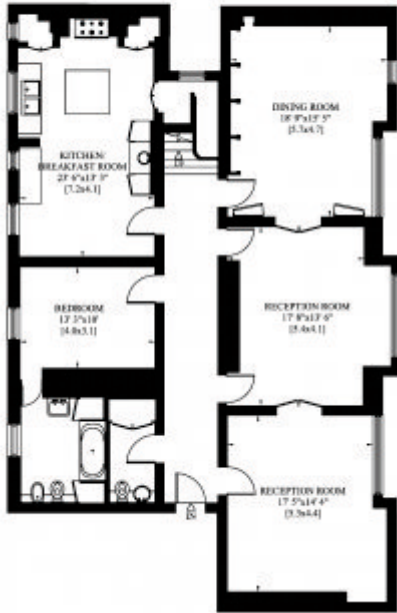
**Local Authority:** City of Westminster

### **Viewing**

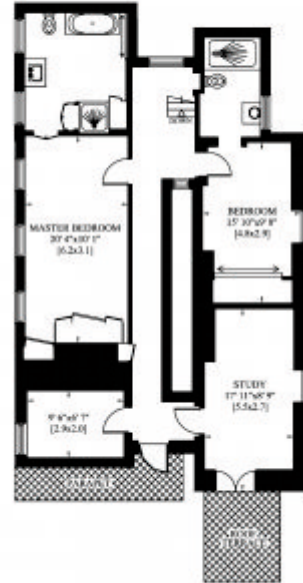
By appointment with Knight Frank 020 7881 7722.



GROSS INTERNAL AREA  
257 SQ M (2,758 SQ FT)



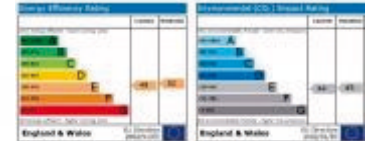
FIFTH FLOOR



SIXTH FLOOR



This brochure is environmentally friendly



These plans are for guidance only and must not be relied upon as a statement of fact. Attention is drawn to the Important Notice.

### Important Notice

1. Particulars: These particulars are not an offer or contract, nor part of one. You should not rely on statements by Knight Frank LLP in the particulars or by word of mouth or in writing ("information") as being factually accurate about the property, its condition or its value. Neither Knight Frank LLP nor any joint agent has any authority to make any representations about the property, and accordingly any information given is entirely without responsibility on the part of the agents, seller(s) or lessor(s). 2. Photos etc: The photographs show only certain parts of the property as they appeared at the time they were taken. Areas, measurements and distances given are approximate only. 3. Regulations etc: Any reference to alterations to, or use of, any part of the property does not mean that any necessary planning, building regulations or other consent has been obtained. A buyer or lessee must find out by inspection or in other ways that these matters have been properly dealt with and that all information is correct. 4. VAT: The VAT position relating to the property may change without notice. Particulars dated: October 2010. Photographs dated: October 2010.

020 7881 7722

82/83 Chester Square,  
London SW1W 9HJ  
belgravia@knightfrank.com



Knight Frank LLP is a limited liability partnership registered in England with registered number OC305934. Our registered office is 55 Baker Street, London, W1U 8AN, where you may look at a list of members' names.