



The Content Integration Company

SharePoint Integration

Microsoft SharePoint is used worldwide for day-to-day business operations. Because it delivers a deep and natural integration with Microsoft Office and has many rich features, it is designed to be the perfect portal for many users.

However, the fragmented nature of information systems with multiple content-centric applications and repositories can pose problems in SharePoint deployments.

Searching accessing and working with documents stored in scattered repositories challenges users. Companies struggle to manage document lifecycles while enforcing corporate policies in an ever-changing regulatory environment. Ultimately, the variety of challenges at both the user and corporate levels require deploying different strategies to gain the benefits of SharePoint, and make the most of your company assets.

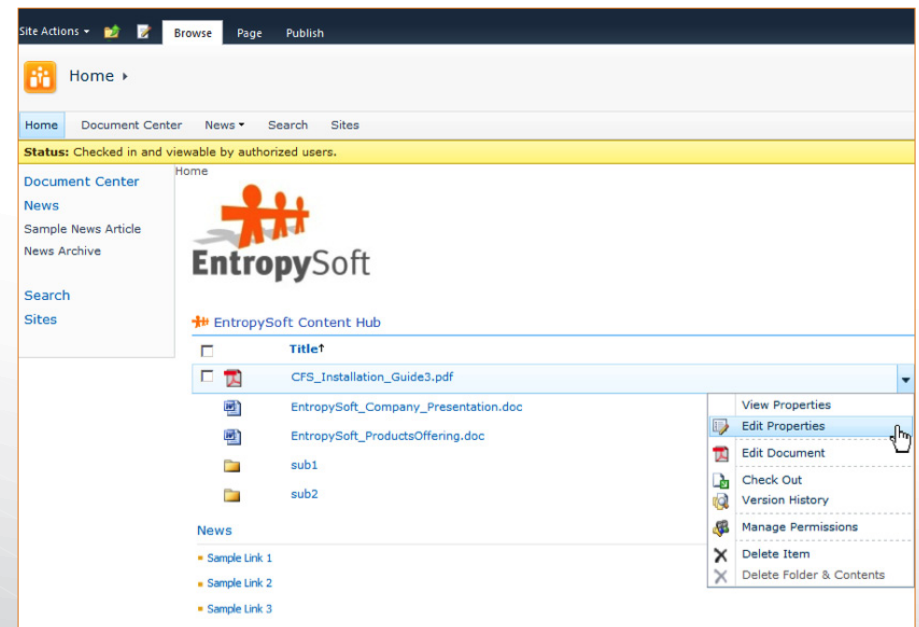
EntropySoft provides three integration solutions for SharePoint deployments:

- Content Federation
- Federated Search
- Content Process Automation

Content Federation

Since Microsoft SharePoint delivers the most complete and advanced Microsoft Office integration for creating or editing documents, it should be the single point of access. But there are often many legacy applications in different locations making information fragmentation a problem.

EntropySoft Content Federation allows all your company documents to be accessible from SharePoint. Deployed in a matter of minutes for 360° seamless access to legacy applications and assets, EntropySoft content federation allows users to create documents, check-in/check-out, manage versions, add metadata and set permissions for documents stored in every one of the 40 supported content-centric applications (Documentum, Filenet P8, LiveLink et al). All without leaving their familiar SharePoint UI.



EntropySoft Federated Search

Finding information in a fragmented landscape is like finding a needle in a number of haystacks. A common SharePoint deployment challenge is to deliver unified search results from many content silos to a single result list.

EntropySoft Federated Search acts as a mechanism to feed data from disparate content sources into the SharePoint global search index. EntropySoft Federated Search can be integrated with either FAST Search for SharePoint or the SharePoint Search Server portal search engine. The SharePoint portal takes advantage of the statistical features of the search index, and delivers faster response time.

Plus, EntropySoft Federated Search seamlessly interacts with EntropySoft Content Federation, allowing the end user to checkin/checkout, and edit properties of all documents returned by the search query.

The screenshot shows the SharePoint Search Results interface. The search query is "EntropySoft_Company_Presentation". The results list contains five items:

- The Content Integration Company**: A document with metadata including authors (System Account, Serge), date (4/16/2010), and size (326KB). The URL is http://demo-sp2010/Docs/Documents/sharepointTestFolder/EntropySoft_Company_Presentation.doc.
- Document Center**: A document with metadata including authors (System Account), date (1/16/2012), and size (72KB). The URL is <http://demo-sp2010/Docs>.
- EntropySoft Company Presentation.doc**: A document with metadata including authors (System Account), date (10/19/2011), and size (326KB). The URL is http://demo-sp2010/_layouts/EntropySoft/DispForm.aspx?itemID=090000018000d1d16. The "DocumentID" value is highlighted with a red box.
- EntropySoft Company Presentation.doc**: A document with metadata including authors (System Account), date (10/19/2011), and size (326KB). The URL is http://demo-sp2010/_layouts/EntropySoft/DispForm.aspx?itemID=Liveliink:144:68411. The "Liveliink" value is highlighted with a red box.
- sharepointTestFolder - All Documents**: A document with metadata including authors (System Account), date (11/1/2011), and size (326KB). The URL is <http://demo-sp2010/Docs/Documents/sharepointTestFolder>.

The screenshot shows the SharePoint document details page for "EntropySoft_Company_Presentation.doc". The document is currently checked out by the Administrator. The "Actions" menu is highlighted with a red box, showing options: Edit Item, Manage Permissions, Delete Item, Version History, and Check Out.

Property	Value
Name	EntropySoft_Company_Presentation.doc
Accessed	2/7/2012 5:32 PM
ACL Domain	Administrator
ACL Name	dm_450000018000d07
Alias Set	0000000000000000
All Version Labels	1.0,CURRENT
Application Type	
Archive	No
Aspect Name	
Assembled From	0000000000000000
Author	
Authors	
Category	
Checked Out By	
Checkout Date	
Component Version	
Composite IDs	
Composite Version	
Compound Architecture	
Content File Count	1
Controlling Application	
Created	10/19/2011 3:48 PM
Creator Name	Administrator

Content Process Automation

Anyone can create a new Microsoft SharePoint site and start using it in a matter of minutes. This strength however, can raise serious questions and concerns about information governance. How can organizations contain these proliferating environments to ensure regulatory compliance? What about integration with business processes?

Add to these concerns that as the volume of content grows, the overall performance of an information system can degrade. So organizations also need a strategy to decommission and archive sites that are no longer active or useful to avoid needless maintenance costs.

The regulatory environment is continuously evolving, becoming more and more constraining as the data continues to grow. At the same time, business processes impact the document lifecycle with issues like integration with business applications, and the requirements to deal with multiple content silos. All while, the number of SharePoint sites continues to increase.

EntropySoft Content Hub addresses these issues by hosting and operating content processes to address compliance, integration and interoperability concerns. Here's how.

Scheduled or Dynamic Compliance

Content Hub Content Process Automation can ensure compliance with the regulatory environment and transfer documents by either scheduled or dynamic methods. Content Hub listens to SharePoint events in real-time and immediately starts the relevant process when an event is detected. For example, it can monitor the creation of documents described by previously identified enterprise metadata and implement the appropriate policies. Then it can ensure the retention period is set before declaring a record or archiving the document.

Easy Sync and Distribution

Content Hub Content Process Automation can also distribute the document to other repositories, multiple teams, or locations. And it can synchronize parts of the SharePoint libraries with other ECM systems. This synchronization allows information sharing among remote teams and establishes a 'single version of truth' users can trust.

Microsoft SharePoint has a lot to offer. Make the most of your SharePoint deployments using one or more of these Content Hub integration solutions. Contact us to discuss your use cases and we'll help you find a solution that fits your business.



The Content Integration Company

1 888 288 4068 | www.entropysoft.net