

INFRASTRUCTURE APPLICATIONS

Logistical planning of wind farm infrastructure can also be carried out using the MDL Dynascan. Bridge and roadside clearance, points of interests and vehicle axis measurements can be easily extracted from point cloud data.

Traditional surveying is often slow and restricted in demanding environments, such as marshlands, deserts, volcanic zones and earthquake regions. The Dynascan is not only able to operate in such locations, but it has the added benefit of being portable enough to be mobilised on any moving platform such as a 4x4, quad bike, ATV or vessel.

SO WHAT'S THE BIG DEAL?

- Enhances safety as you don't need to leave the vehicle
- Simple to install and easy to use
- Ethernet interface
- Fully calibrated 'one pod' solution
- Robust, portable and all weather housing
- Can be mounted on rugged vehicles such as trucks and buggies to access inhospitable environments
- Low cost of ownership
- Full technical support

WHAT'S IN IT FOR ME?

- Planning of wind farm infrastructure
- Aboveground utility surveys e.g. pipe and powerlines
- Large earthwork design surveys
- Bridge & roadside clearances
- Combine data with other geo referenced scans

Dynascan scanning pipelines



www.mdl-laser.com

Rev_01_13_03_12

3D MOBILE MAPPING SYSTEM FOR INFRASTRUCTURE APPLICATIONS



The Dynascan 3D mobile mapping system from MDL is ideal for a number of infrastructure applications such as large earthwork design, powerline surveys and aboveground utility mapping.

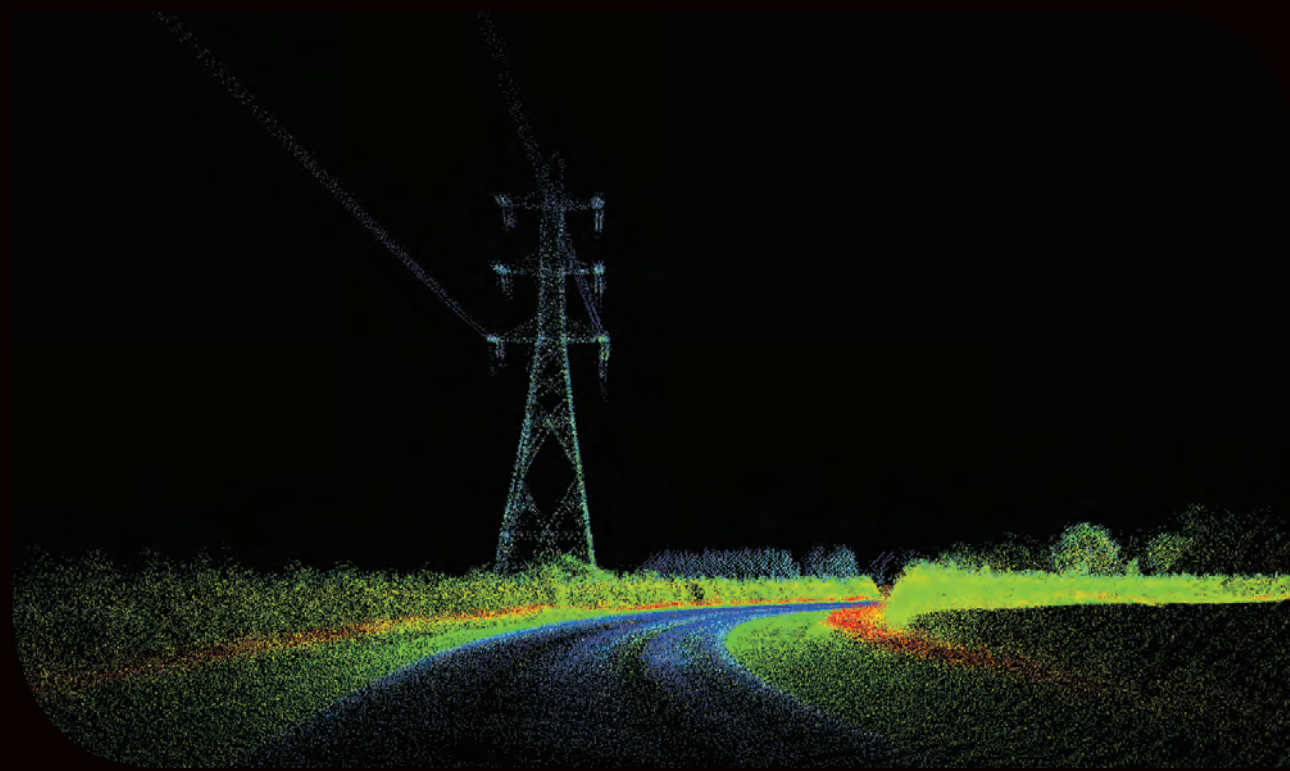
The system can gather data safely and efficiently without the need for surveyors to leave the vehicle, allowing rapid and safe scanning, even in extreme environments.



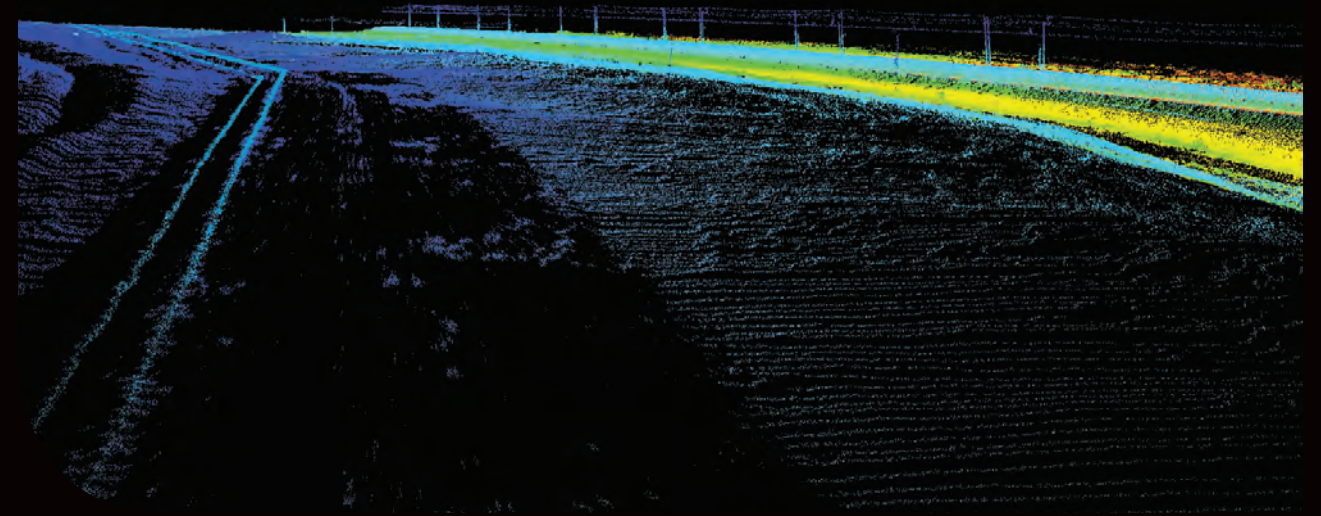
www.mdl-laser.com

Infrastructure

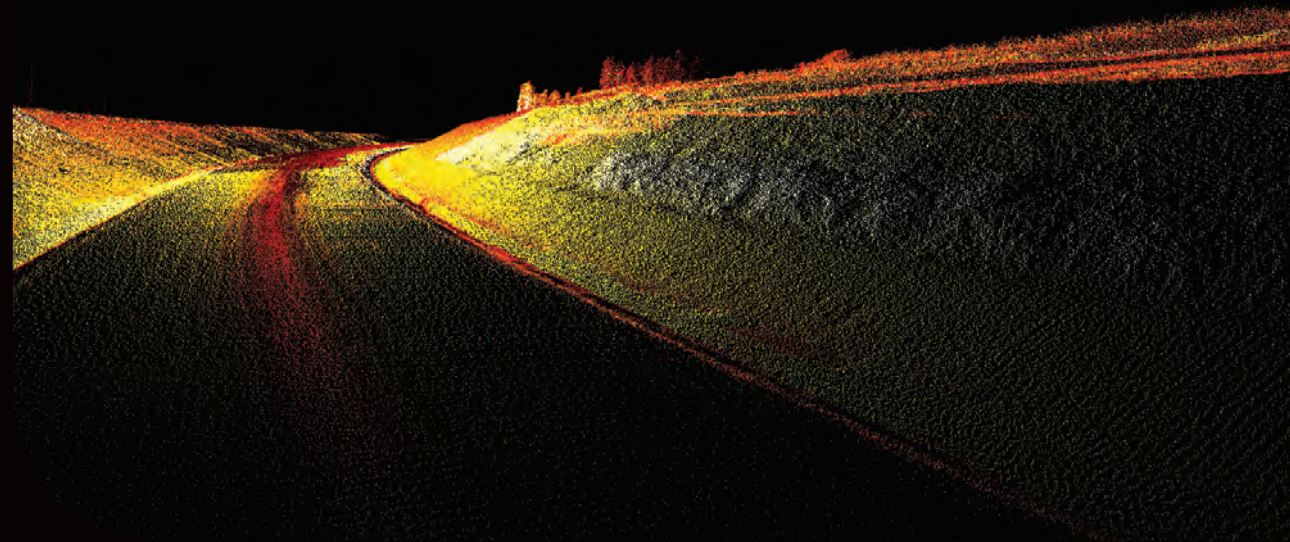
Dynascan



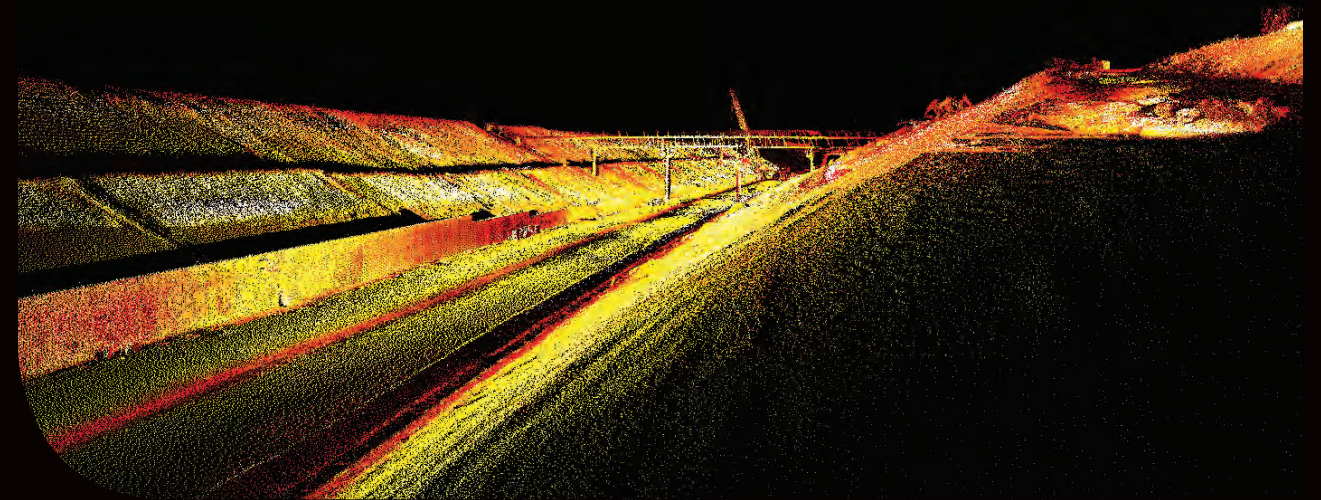
Powerline survey



Aboveground pipeline scan



Earthwork profile for new roadway



Earthwork as-built survey