

QUARRY AND MINING

The portability of the Dynascan enables it to be mounted on a number of different quarry vehicles from site 4x4's to haul trucks.

The Dynascan is one of the fastest selling mobile mapping systems in the market place and is the preferred system of many mine and quarry operators globally. The system is a valuable tool in operations that have a constant need for accurate reporting information.

SO WHAT'S IN IT FOR ME?

- Reduces time on site and exposure to risk
- Collect more data in less time than traditional scanning
- Robust, portable and all weather pod
- Easy to mobilise and demobilise
- Gather real-time data onsite
- Low cost of ownership
- Full technical support

WHAT CAN I DO WITH IT?

- Asset management
- Survey vast areas quickly and safely
- Compare old data and new data instantly
- Use as an auditing tool
- Enhance mine and resource management

Face profile scanning



3D MOBILE MAPPING SYSTEM FOR QUARRY & MINING APPLICATIONS



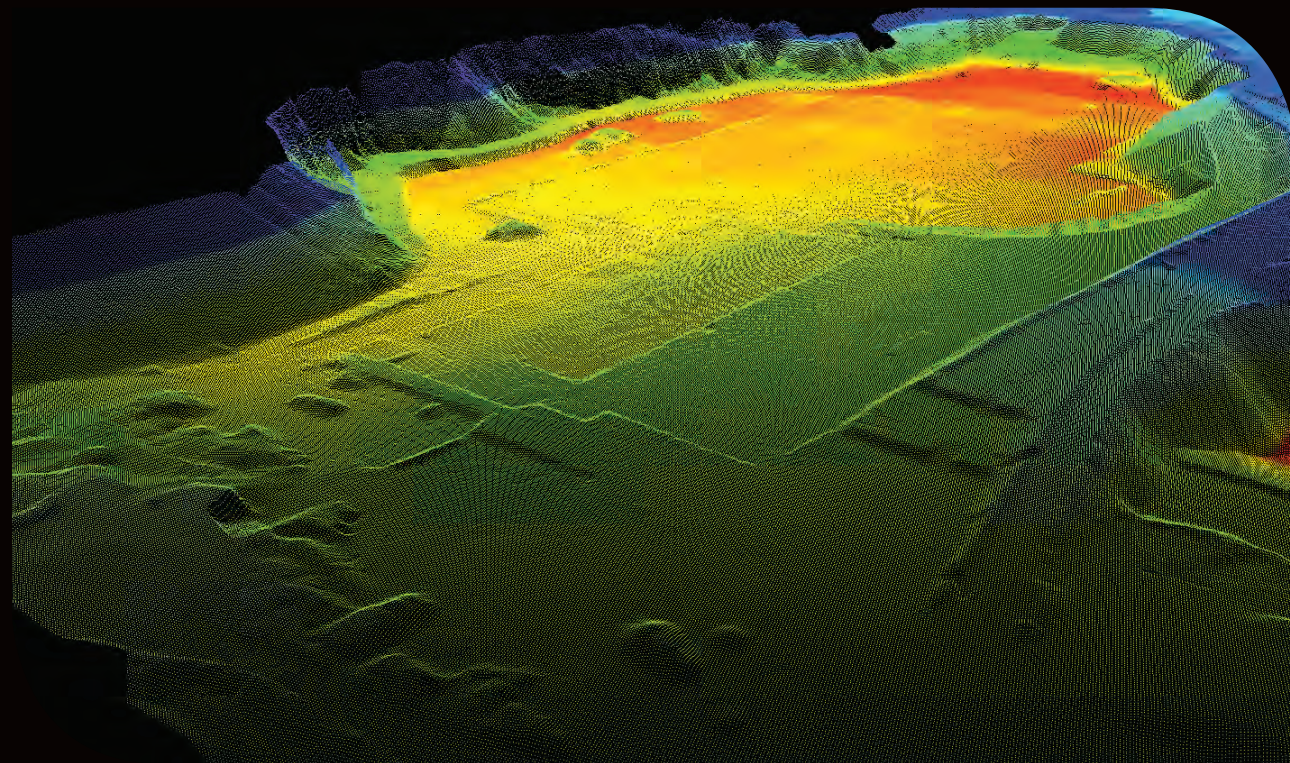
The Dynascan 3D mobile mapping system from MDL is ideal for scanning harsh environments such as quarries and mines. The rugged design of the system and resistance to water ingress enables the Dynascan to be used for the complete mapping of a quarry, even in adverse weather conditions.

This 'one pod solution' can be mobilised in under an hour and can carry out surveys in a fraction of the time of conventional survey techniques. The Dynascan provides a complete and accurate asset management data set, reducing the time spent on site in hazardous environments, helping to increase profitability and the safety of operators.

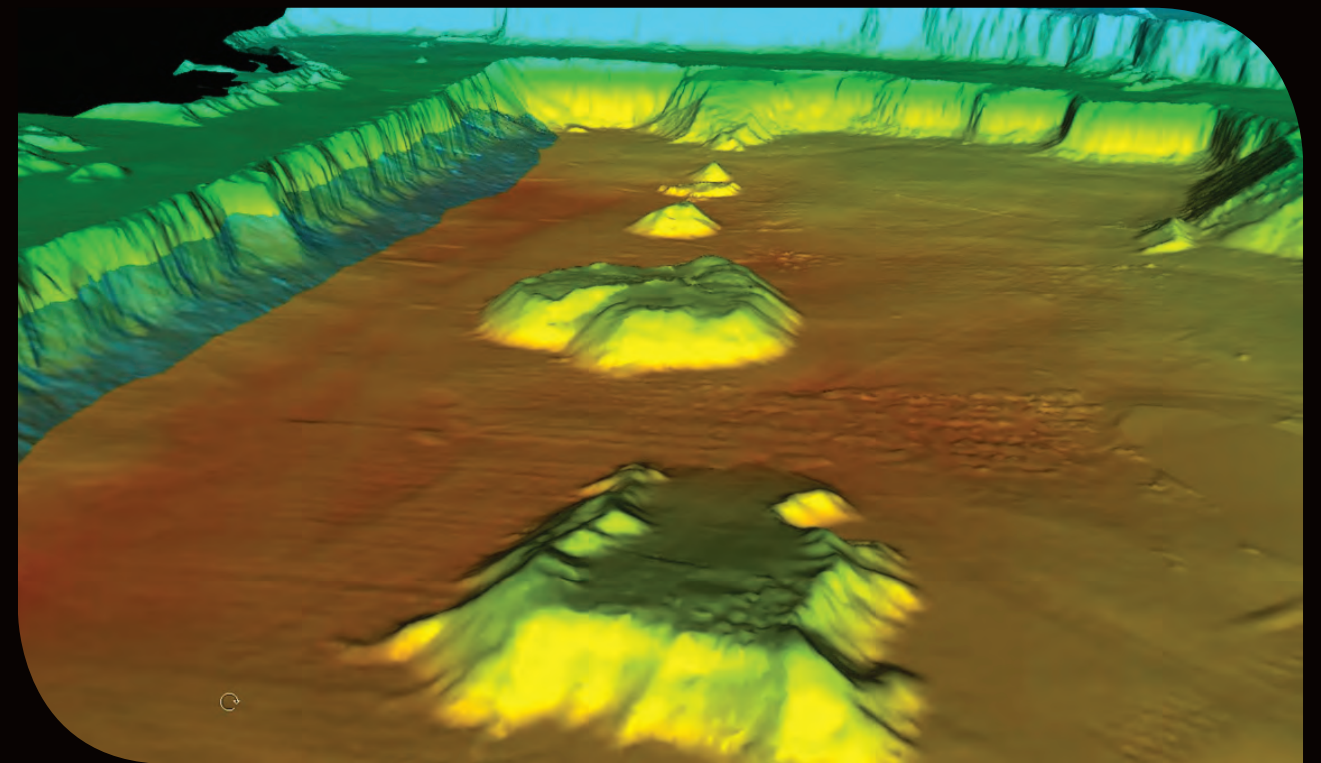
The factory calibrated Dynascan combines the latest motion sensor, GPS and laser technology to provide accurate X,Y,Z and RGB data.



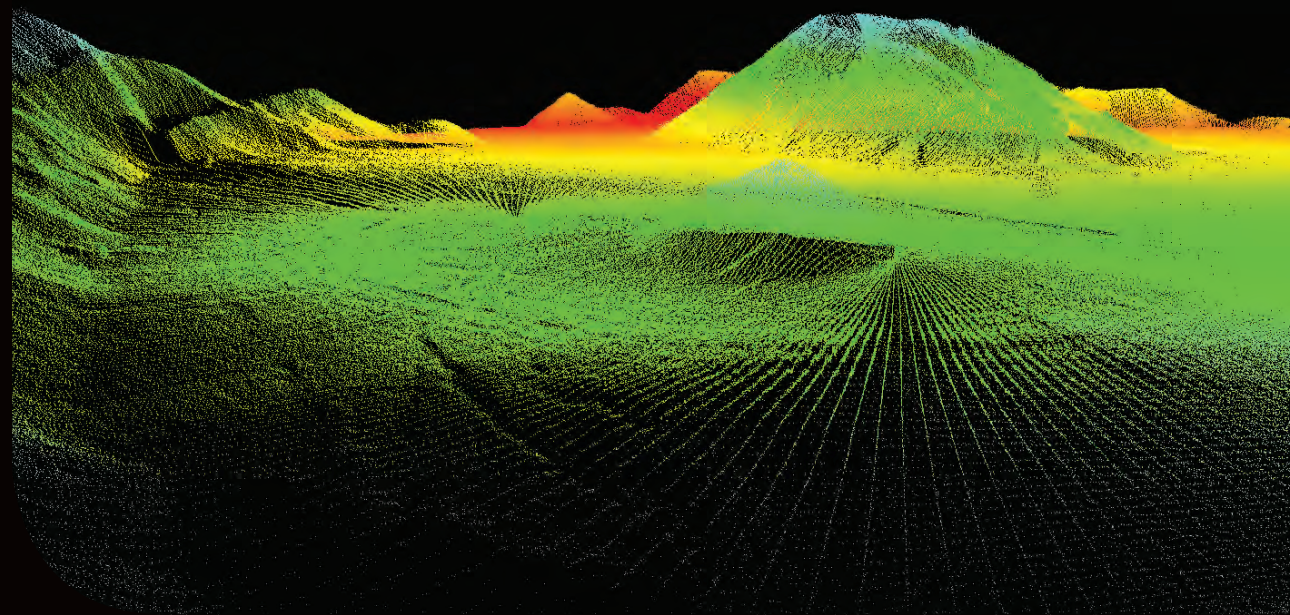
Quarry & Mining



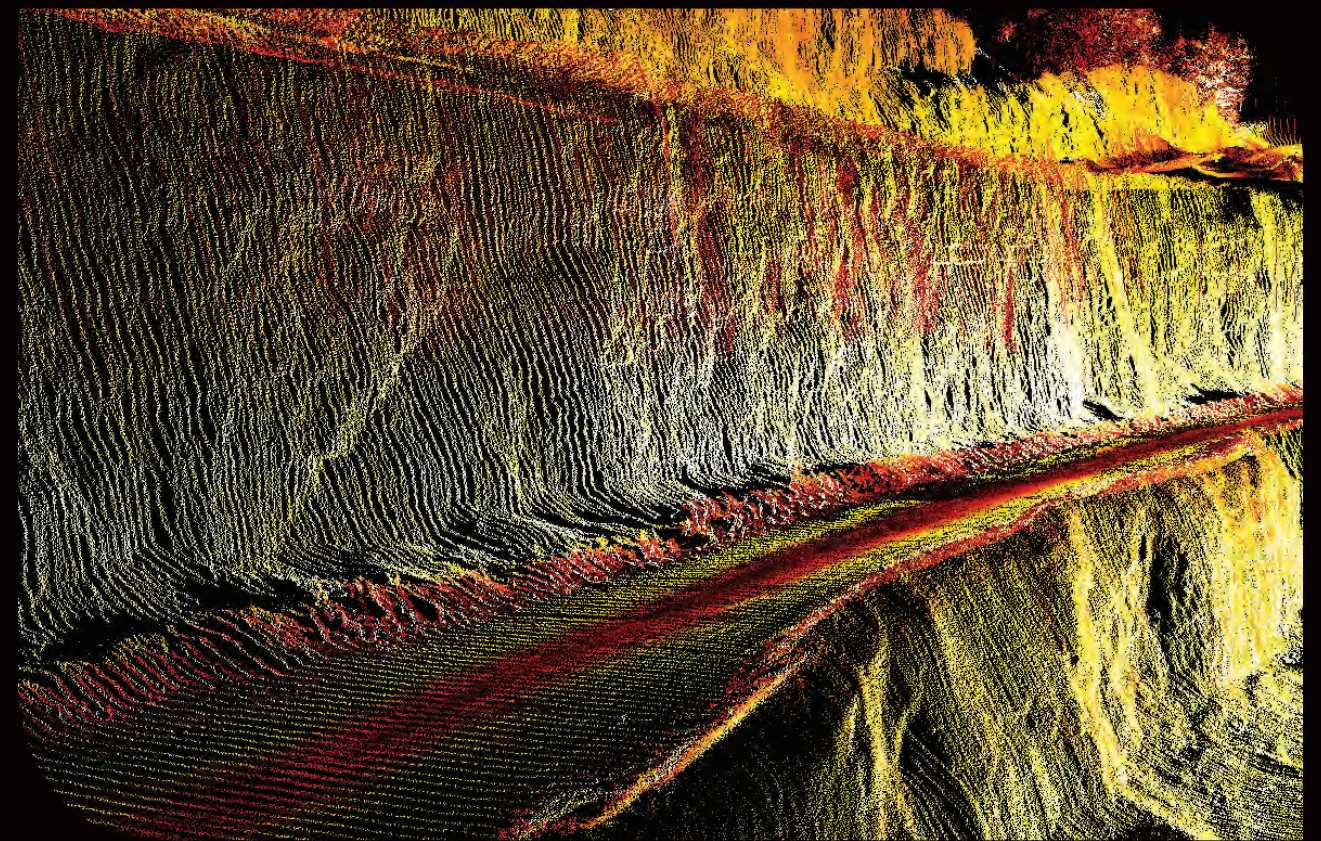
Gridded quarry point cloud



Modelled pre and post blast comparison



Stockpile point clouds



Bench and face scanning