

## The Central Management Solution for RTM Systems

The RTM product line now has a centralized management solution, RTM Manager.

RTM Manager is an automated central store, logger and playback server allowing instantaneous access to all RTM error events and recordings.



### Web Server Dashboard in a Browser

- Provides health and activity of multiple RTMs to any user via http connection
- Alarms on errors from any RTM unit
- Alarms when a RTM has gone off line
- Provides long term statistical data across multiple units

Unit	Description	Run Time ddhh:mm:ss	Unit Status	Video Errors	Audio Errors	LipSync Errors	Offest (msec)	VANC Errors	Input Lost	Last Failure	Clear Status	Unit Details	
Unit1	Network East Coast A	00: 22: 11: 09	●	0	0	0	8.77	0	0 / 0	0000/ 00/ 00	00: 00	Clear	Details
Unit2	Network East Coast B	00: 00: 14: 49	●	0	0	0	8.71	0	0 / 0	0000/ 00/ 00	00: 00	Clear	Details
Unit3	Network West Coast A	00: 15: 41: 36	●	0	0	0	8.81	0	0 / 0	0000/ 00/ 00	00: 00	Clear	Details
Unit4	Network West Coast B	01: 15: 29: 06	●	1	0	0	8.73	0	0 / 0	2011/ 03/ 23	08: 45	Clear	Details
Unit5	Cable 1	00: 22: 11: 10	●	0	0	0	8.77	0	0 / 0	0000/ 00/ 00	00: 00	Clear	Details
Unit6	Cable 2	00: 00: 14: 49	●	0	0	0	8.81	0	0 / 0	0000/ 00/ 00	00: 00	Clear	Details
Unit7	Cable 3	00: 15: 41: 36	●	0	0	0	8.81	0	0 / 0	0000/ 00/ 00	00: 00	Clear	Details
Unit8	Cable 4	01: 15: 29: 06	●	1	0	0	8.73	0	0 / 0	2011/ 03/ 23	08: 45	Clear	Details

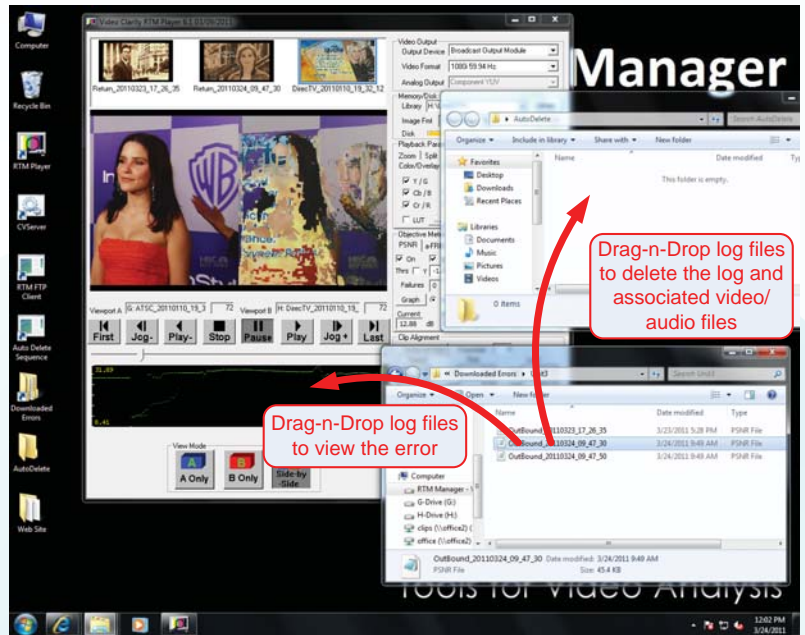
Web Server Dashboard - Showing eight RTM systems

## Automated Central Store, Logger and Player

Impaired video/audio recordings are immediately transferred to RTM Manager from all network attached RTMs over gigabit Ethernet.

Event logs are continuously generated and are automatically transferred from each RTM system to the RTM Manager.

As errors occur operators are able to view uncompressed AV in a side by side comparison of the reference and downstream recording without stopping the RTM system that caught the error.



Desktop view of RTM Player operation

## RTM Manager - Model: RTM-MGR02



### Model RTM-MGR02

**Storage** - 1.8 TB

**Power**  
100 - 240VAC, 47-63Hz, Autodetect  
300 Watts Max

**Includes**  
Web Server and Dashboard,  
Automated Archive, Logger,  
RTM Player and 1 RU rack ears

**Video I/O**  
ITU-601, SMPTE 259/292/296  
2 HD/SD-SDI - inputs and outputs (BNC)  
- input two signals up to 1080i 60Hz each

**Audio I/O**  
24 bit, 48 KHz PCM  
2 HD/SD-SDI - inputs and outputs (BNC)  
- 8 channels of embedded audio per BNC

### Physical Specifications

Dimensions 17" W x 1.75" H x 10" D  
43.2 cm x 4.5 cm x 25.4 cm  
Weight 11.7 lbs, 5.3 Kg

### Temperature

Operating: +5 - +35 Celsius  
Storage: -20 - +50 Celsius  
Relative Humidity: 5-95%, non condensing

Product design and specifications are subject to change without notice or obligation. Video Clarity, Inc.