



Track and Manage Your Fleet

Anywhere



Anytime

WWW.REDTAILGPS.COM

FEATURES & BENEFITS AT A GLANCE

REDTAIL's Fleet Management System (FMS) reduces expenses, improves customer service and provides tools to efficiently manage day to day fleet operations.

Dashboards

Make it easy for management and staff to access crucial and current vehicle data at little more than a glance. Quickly identify and manage risky driving behavior with a snapshot of fleet activity.



Driver Behavior

Capture rapid acceleration, harsh braking and excessive rotation data from fleet vehicles. Provides fleet managers with the data to improve driving behavior and reduce fuel consumption.



Location & Mapping

Quickly locate fleet vehicles with REDTAIL GPS tracking technology. Track and access fleet vehicles real-time via computer, smart phone or tablet.



Vehicle Information

Time is Money! Allow the REDTAIL Fleet Management System (FMS) to track your preventative maintenance schedules. Avoid unexpected out-of-service fleet vehicles.



Reports

Essential fleet management information at your fingertips. Whether you require high level or detailed reports to run your business, the REDTAIL GPS Fleet Management System (FMS) provides a suite of reports to meet your needs.



Support

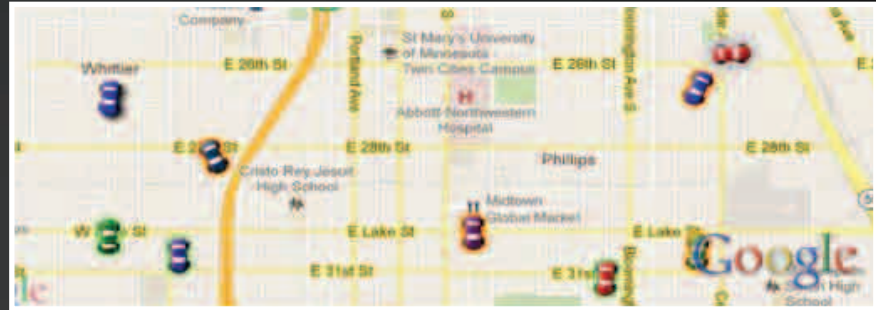
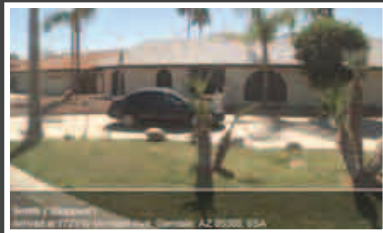
We are here to help! REDTAIL offers numerous support materials to maximize the power of your fleet management software. Reference our online materials, access our online chat...or just give us a call. We are always happy to hear from our customers.



REDTAIL GPS tracking manages all types of fleets: Service Vehicles, Short and Long Haul Trucks, Taxi and Limo fleets, Personal Vehicles and Off Road Construction Equipment.

MAPPING AND LOCATION

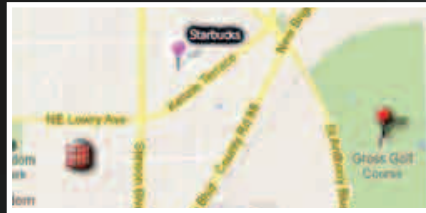
Getting the most out of your fleet requires much more than basic GPS tracking. Knowing the precise location of your vehicles and drivers at all times is essential.



- Track and Locate Vehicles Real-Time Via the Internet Increasing Productivity and Operating Efficiency.
- Receive Boundary Alerts When a Driver Exits or Enters a Preset Location.
- Customize Your Map and Add Points of Interest, Customer Addresses or Frequently Visited Locations.
- Quickly Locate Your Vehicles Using Dispatch Assist For More Precise Routing.

MAPPING AND LOCATION

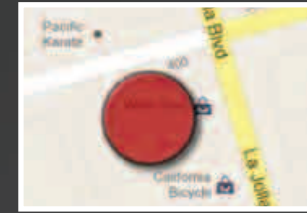
REDTAIL GPS Fleet Management System (FMS) provides the ability to set unlimited boundaries, monitor speeding, customize points of interest and assists in dispatching the closest driver to a location for re-routing.



LANDMARKS

	Name	Status
	Truck #106	Stopped Arrived at 4880 Hoffner Ave, Orlando, FL 32812, USA
	Truck #105	Moving Departed from FCI Ln, Glenville, WV 26351, USA

STATUS

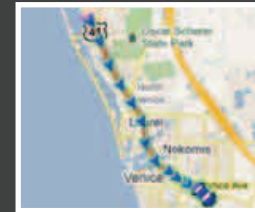


BOUNDARIES

Find nearest:

Name	Distance(mi)	Address	Longitude	Latitude
Lj Star 7	7.9160		-117.2778	32.8369
Lj Star 9	7.9191		-117.2778	32.8390
Mercedes	22.1110		-117.0704	33.0531
Lj Star 5	24.7669		-117.2852	33.0996

DISPATCH ASSIST



JOURNEY DETAILS

Dashboards combine data and graphical indicators to deliver at-a-glance summaries of information for users to view the state of their fleet and quickly respond.



- “Manage By Exception” and Quickly Identify Risky Driving Behavior.
- View Vehicles in Alert Condition Within a Chosen Time Period.
- See a Snapshot of Driver Behavior and Vehicle Information.

DRIVER BEHAVIOR

REDTAIL GPS Fleet Management System (FMS) tracks driver behaviors in real-time, allowing you to see precisely where and when excessive idling, harsh cornering and braking, rapid acceleration and speeding occur. View these alerts straight from the User Interface or receive real-time alerts via email.



Wasted fuel is the largest source of lost revenue for fleets of all types and sizes. Monitoring driver behavior helps to significantly reduce expenses.

VEHICLE INFORMATION

The REDTAIL GPS Fleet Management System (FMS) detects engine status, mileage, device alerts and battery voltage of your vehicles, protecting against unnecessary maintenance and repair costs. Use one of our many features like Daily Heartbeat to know that your REDTAIL GPS fleet tracking device is working properly.



- Know Each Time a Vehicle's Ignition is On or Off to Determine Mileage, After Hour Usage, Idling and More.
- Receive Diagnostic Alerts to Monitor the Health of Your REDTAIL System.
- Ensure Proper Vehicle Battery Power and Receive Alerts if Voltage Drops Too Low.

REPORTING

REDTAIL's Reporting Suite allows you to generate reports based on historical data for a simple and easy to use summary. GPS fleet reports are great to use for verifying time cards, providing electronic proof of service to customers and proof of billing. All reports can be exported in a CSV format to be viewed in Excel or printed as a PDF.

- Daily Activity
- Daily Hours
- Idle
- Fleet Summary
- Notifications
- Speeding
- Individual Trip Report
- PTO Usage
- State by State
- Landmarks
- Off Hours

EXAMPLE OF DAILY ACTIVITY REPORT

Vehicle ▲	Number of Trips	Total Time (hours)	Total Distance (mi)	Latest Trip
Erin	281	414.5	1477.322	04-17-2012 03:15:12 pm
Evans	218	385.2	664.177	04-17-2012 08:12:19 pm
Joe	283	414.7	738.251	04-18-2012 10:09:36 am
Smith	173	402.5	724.68	04-18-2012 08:57:12 am

MOBILE APPLICATION

The REDTAIL Mobile App works on a variety of smartphones and tablets. You will know if the vehicle is currently moving or stopped, the last known location and a timestamp. If you have a large number of vehicles in your fleet you can type the first letters or numbers of the device name in the search bar and jump directly to that device.



Access all aspects of the REDTAIL Fleet Solution using our mobile application, including: Devices, Alarms, History, Find Nearest and Preferences.

PRICING

Basic	Standard	Advanced
Minimal Tracking	Frequent Updates	Streaming GPS Data
Entry Level	Our Most Popular Plan!	Turbo Level
Basic User: <ul style="list-style-type: none">Periodically checks the REDTAIL website.Runs reports monthly.Needs basic tracking information.Not interested in all the bells and whistles.	Standard User: <ul style="list-style-type: none">Always keeps the REDTAIL GPS website open.Uses the REDTAIL GPS Mobile App when on-the-go.Needs advanced tracking to ensure his drivers are on schedule.Runs reports daily.Relies on Dispatch Assist.	Advanced User: <ul style="list-style-type: none">Needs to know a driver's location within seconds.Always monitoring Driver Behavior.Takes advantage of all features available.Needs constant communication with drivers and vehicles.Requires Mobile App.
Buy Now	Buy Now	Buy Now
\$19.99	\$29.99	\$35.99

Service pricing above does not include a 1 time charge for the GPS tracking device. Price for the GPS tracking product for your fleet vehicles or assets depends on the size of the fleet.

TESTIMONIALS

“

“We compared two different GPS solutions before choosing REDTAIL GPS. We are experiencing fuel savings from a number of habits that are changing. The guys are not leaving the job sites early. They are taking the most direct route back at night. We can run a report to see how many times we are going to the parts store and have come up with a plan to reduce these trips. I would recommend the product and the staff.”

-Brian Bural, Northwest Landscape Services

”

“

“Prior to installing the REDTAIL devices, the drivers would idle the vehicles excessively, wasting fuel. I know this because the town cars have an engine idle meter on them. Once REDTAIL was installed, I was able to catch the drivers idling excessively and put an end to that driver behavior, thus reducing fuel consumption and emissions. The next month’s fuel bill was several hundred dollars lower than average and there is a continued savings.”

-Robert McKenzie, La Jolla Star Transportation

”

“

We decided to use REDTAIL GPS because we feared we were losing money by not being able to schedule additional service calls. After installing the device, we found one of our technicians starting his day 2 hours later than he was required to. Plus, he would wander off during the day, take “power naps” in the park and go home early. This system will help us save thousands of dollars in wasted costs each month.”

-Sarah, Valley Food Equipment

”

“

“We would recommend REDTAIL GPS to anyone in the trucking industry. We’re still finding things it will do, like idle time. We spend thousands of dollars a week on fuel and it gets darned expensive.”

-John Sellens, Nichols Trucking Company

”



Redtail Telematics Corporation, based in Southern California is an established global manufacturer of state-of-the-art GPS tracking products for fleets, as well as a strategic DataWarehouse supplier to the Insurance Telematics industry and other enterprise-level customers in both the U.S. and Europe. Redtail Limited is a sister company of Cambridge, UK-based Plextek - an award-winning designer and manufacturer of communications systems for technology customers worldwide, and one of the largest independent electronics consultancies in Europe. REDTAIL's PTCRB-certified Vehicle Asset Management (VAM) GPS product is now fully deployed in Europe and North America, offering a best in class total solution to fleet managers worldwide. To date the team has provided more than 5 million hardware units to customers with an unmatched track record of quality, reliability and performance to the automotive aftermarket.



WWW.REDTAILGPS.COM
SALES@REDTAILGPS.COM
1-866-711-4880