

# Uptime Devices™

ENVIRONMENTAL MONITORING. SIMPLIFIED.™

## SYSTEM OVERVIEW

Environmental Monitoring. Simplified.™



# Uptime<sup>TM</sup> Devices

ENVIRONMENTAL MONITORING. SIMPLIFIED.<sup>TM</sup>

Uptime Devices designs Environmental Monitoring products for businesses of all sizes.

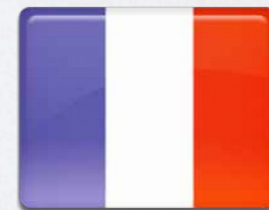




# APPLICATIONS

- Data Centers
- Cold Storage
- Power Plants
- Manufacturing Facilities

Over 27,000 Units Installed in over 30 Countries





# ENVIRONMENTAL MONITORING. SIMPLIFIED.<sup>™</sup>

What does *SIMPLIFIED* mean?

No Software Needed.

No Monthly Fees.

Expandable Design.

10-Minute Installation.



# WHAT WE DO

- Environmental Monitoring
- Security Access
- Power Control and Management

**\$500,000** ←

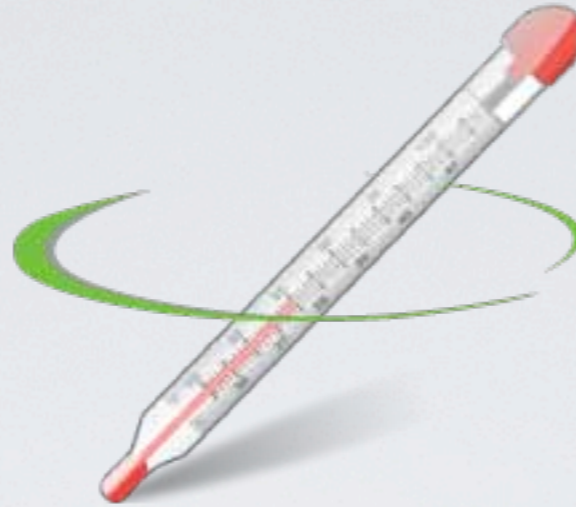
*In a 2011 study, the Ponemon Institute examined the cost of network failure. The average cost of an outage incident? \$505,502*

***Losing assets can disrupt business, cost revenue, and hurt reputation.***

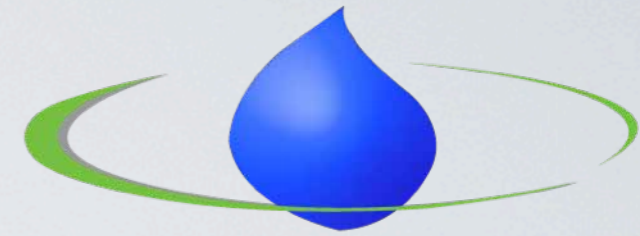




*Smoke*



*Temperature*



*Water*



*Power*



*Humidity*



*Airflow*

UPTIME DEVICES MONITORS  
A VARIETY OF CONDITIONS



# UPTIME DEVICES BASE UNITS



Remote Physical Monitor CM



Sensor Hub™



SMS Sensor Alert®



# Remote Physical Monitor CM

*"the most complete monitoring device on the market"*



[RPM CM]

Remote Physical Monitor CM provides a complete picture on a vast range of environmental conditions. It provides real-time information on *environment, security, and power use*. This data is available through our web-based platform and accessible anywhere. Receive alerts via E-mail, SNMP or SMS.

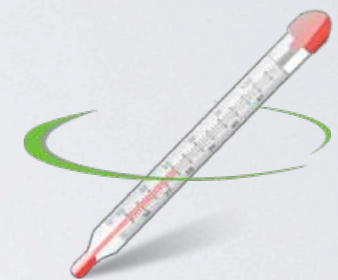


Remote Physical Monitor CM uses *Daisy Chain Sensor*® Technology, developed by Uptime Devices to consume less energy, generate less heat, and take up less space.

- Connect Up to 250 Remote Intelligent Multi Sensors® (RIMS) to one Remote Physical Monitor CM
- Browser-based interface
- Control PDUs from anywhere
- **Green** technology



Smoke



Temperature



Humidity



Power



Airflow



Water



# Why Daisy Chain Sensor<sup>®</sup> Technology is important.



## Flexibility.

*As environmental monitoring needs rise in your business, expand capabilities without having to buy new hardware. A single Remote Physical Monitor CM can support up to 250 Remote Intelligent Multi Sensors<sup>®</sup>.*



## Save On Energy Costs.

*With this technology, your facility will no longer have to pay the cost of powering up large numbers of hardware pieces. More hardware units means more heat generated. Energy costs are rising— start saving now.*



## Use Less Space.

*Data centers are dealing with a lack of space as they approach capacity. With 1 U of rack space, a business can implement monitoring for a host of servers. Say goodbye to constant investments in bulky hardware pieces.*



## Dependability.

*In the event of power failure, sensors contain internal batteries that keep logging environmental information. Alerts are sent out that power has been lost.*





# REMOTE INTELLIGENT MULTI SENSORS<sup>®</sup>

*For Remote Physical Monitor CM*

Remote Physical Monitor CM



included with Remote  
Physical Monitor  
CM purchase

HEAT Remote Intelligent  
Multi Sensors<sup>®</sup>(TRIMS)

2 Port Power Remote  
Intelligent Multi  
Sensors<sup>®</sup>(VRIMS)

- Connect Up to 250 Remote Intelligent Multi Sensors<sup>®</sup>(RIMS) to one Remote Physical Monitor CM
- Each RIMS has own MAC Address
- 0U Rack Mountable
- Maximum Daisy Chain Sensor<sup>®</sup> length of 2,000 ft.

## RIMS Series Products

- HEAT RIMS
- 2 Port Power RIMS
- RS-232 PDU RIMS
- 10 Port Dry Contact RIMS



# HEAT RIMS



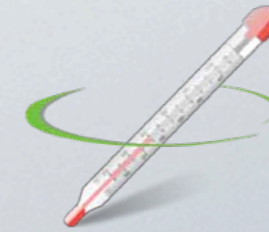
[TRIMS]



Airflow



Humidity



Temperature



Smoke



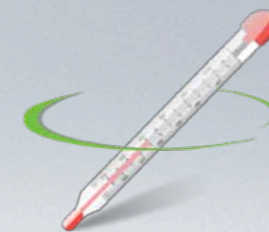
Water

- Digital Temperature Sensor
- Digital Humidity Sensor
- Airflow Sensor
- Supports 1 Dry Contact Sensor

# 2 PORT POWER RIMS



[VRIMS]



Temperature



Power

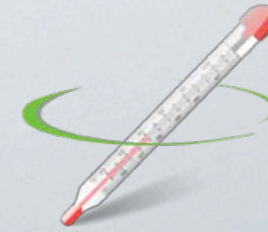
- 2 Power On/Off/Reboot Outlets
- Monitor Energy Current Draw
- Temperature Sensor



# RS-232 PDU RIMS



[232RIMS]



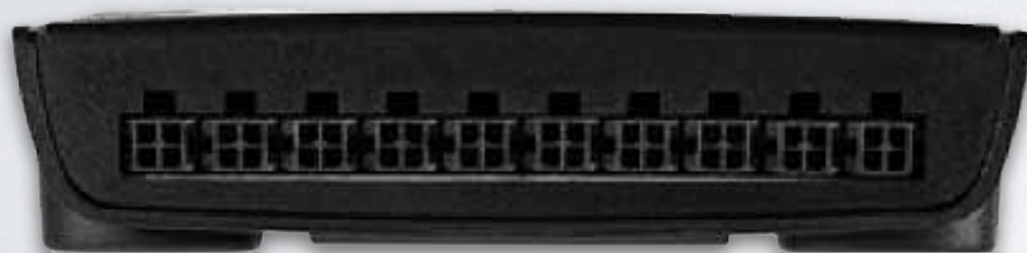
*Temperature*



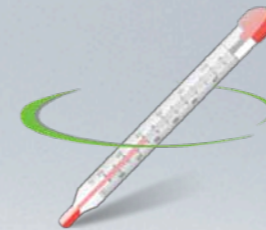
*Power*

- Monitor and Control 3rd Party PDUs from Eaton®, Baytech®, Powerware®, APC®, ServerTech®, Liebert®
- Temperature Sensor

# 10 PORT DRY CONTACT RIMS



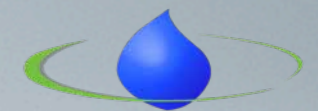
[10DCRIMS]



*Temperature*



*Smoke*



*Water*

- Supports 10 Dry Contact Sensors
- Auto Detect Smoke, Water, Security, and Motion Sensors
- Temperature Sensor



# UPTIME DEVICES POWER MONITORING

*For Remote Physical Monitor CM*

Single Phase AC Power Meter



[ACPWR]

DC Power Meter



[DCPWR]

3 Phase AC  
Power Meter



[3ACPWR]

Wireless Power  
Meter Adapter



[WPWR]

- Load Profiling and Benchmarking
- Net Metering
- Data Center Tenant Cost Allocation
- Capitalize on Green Energy initiatives

## Power Monitoring Products

- SINGLE PHASE AC POWER METER
- 3 PHASE AC POWER METER
- DC POWER METER



# UPTIME DEVICES POWER MONITORING

*For Remote Physical Monitor CM*

## CURRENT TRANSFORMERS

150 Amps CT  
Solid Core

[150A-ACSOCT]



30 Amps CT  
Solid Core

[30A-ACSOCT]



Hall Effect DC CT

[300A60V-DCSOCT]



100 Amps CT  
Split Core

[100A-ACSPCT]





# Sensor Hub™

*“the original SNMP-based environmental monitoring device”*



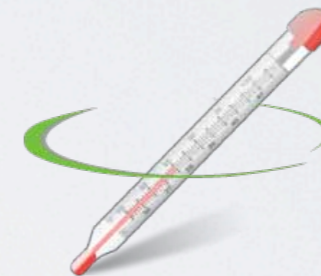
[SH-2]

The original Sensor Hub™ - the proven compact monitoring device that is used around the world. Sensor Hub™ provides real-time information on *environment* and *security*. This data is available through our web-based platform and accessible anywhere. Receive alerts via E-mail or SNMP.

- 0U Rack Mountable
- Supports 2 Environmental Sensors
- Browser-based interface
- E-Mail Notifications and SNMP Traps for User-Defined Thresholds
- Graphing Capability



*Smoke*



*Temperature*



*Water*



*Humidity*



*Airflow*



# ENVIRONMENTAL SENSORS

For Sensor Hub™

included with  
Sensor Hub™ purchase



Temperature Sensor (SATS)



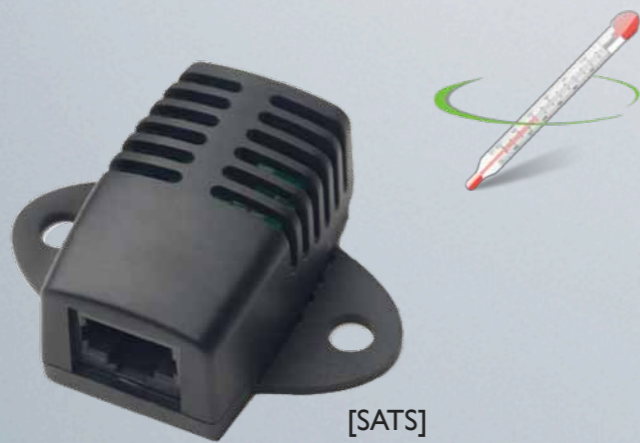
Sensor Hub™



## Sensor Hub™ Environmental Sensors

- Temperature Sensor
- Humidity Sensor
- Temp/Airflow Combo Sensor
- Temp/Humidity Combo Sensor
- Voltage Sensor





[SATS]

TEMPERATURE  
SENSOR



[SAHS]

HUMIDITY  
SENSOR



[SAVS]

VOLTAGE  
SENSOR



[SATA]

TEMPERATURE/AIRFLOW  
COMBO SENSOR



[SATHI]

TEMPERATURE/HUMIDITY  
COMBO SENSOR

## Sensor Hub™ Environmental Sensors



# ENVIRONMENTAL SENSORS

*For Remote Physical Monitor CM and Sensor Hub™*

Wide Angle  
Motion Detector



[MTN]

Natural Gas  
Detector



[LPGGAS]

Carbon Monoxide  
Detector



[COGAS]

Multi Gas  
Detector



[MULTIGAS]

Smoke  
Sensor



[SMSK]

360° Motion  
Detector



[360MTN]

Security Sensor



[SASS]

Dual Security  
Sensor



[SASS-DUAL]

Liquid Sensor



[SAWS]

Dry Contact  
Sensor



[SADCC]



# SMS SENSOR ALERT®



[SMS-SA]

SMS Sensor Alert® is Uptime Devices first stand-alone environmental monitoring device. With no network or landline required, SMS Sensor Alert® is a versatile monitoring option for protecting assets. Daily status notifications can be sent with a full sensor report. Receive alerts via E-mail or SMS.

- No Network or Landline Necessary
- SMS Alarms for Up to 5 Cell Phones
- Cloud-based Storage
- Battery Backup Logs Data in Event of Power Outage
- Graphing and Spreadsheet Capability
- Buzzer Alarm Alerts Local Personnel

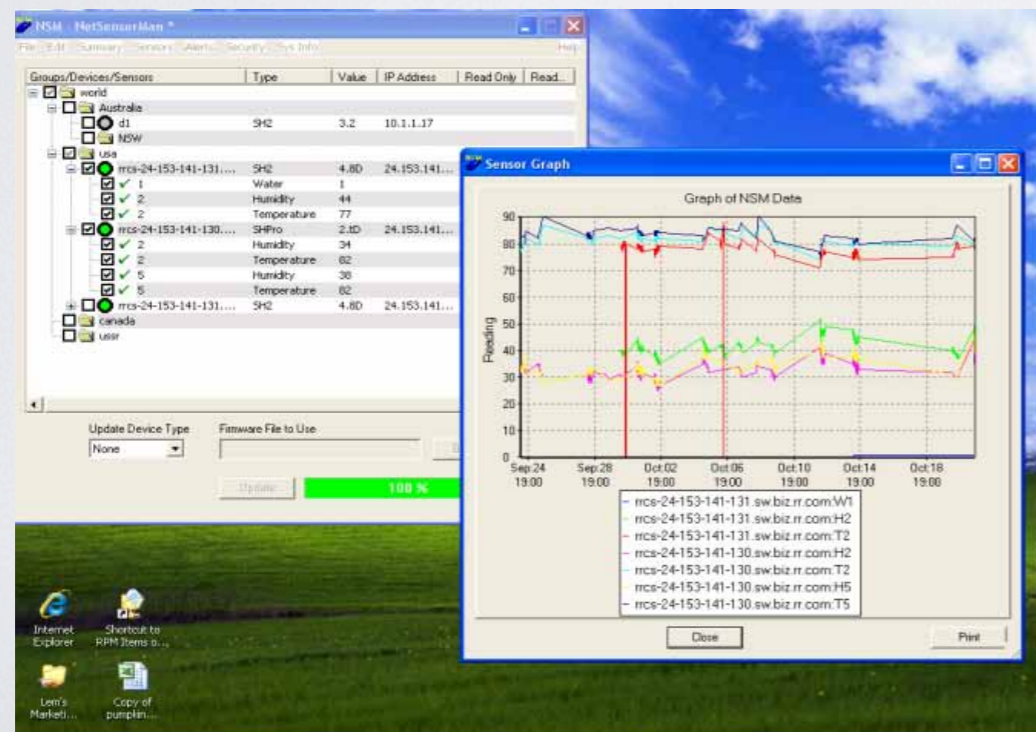
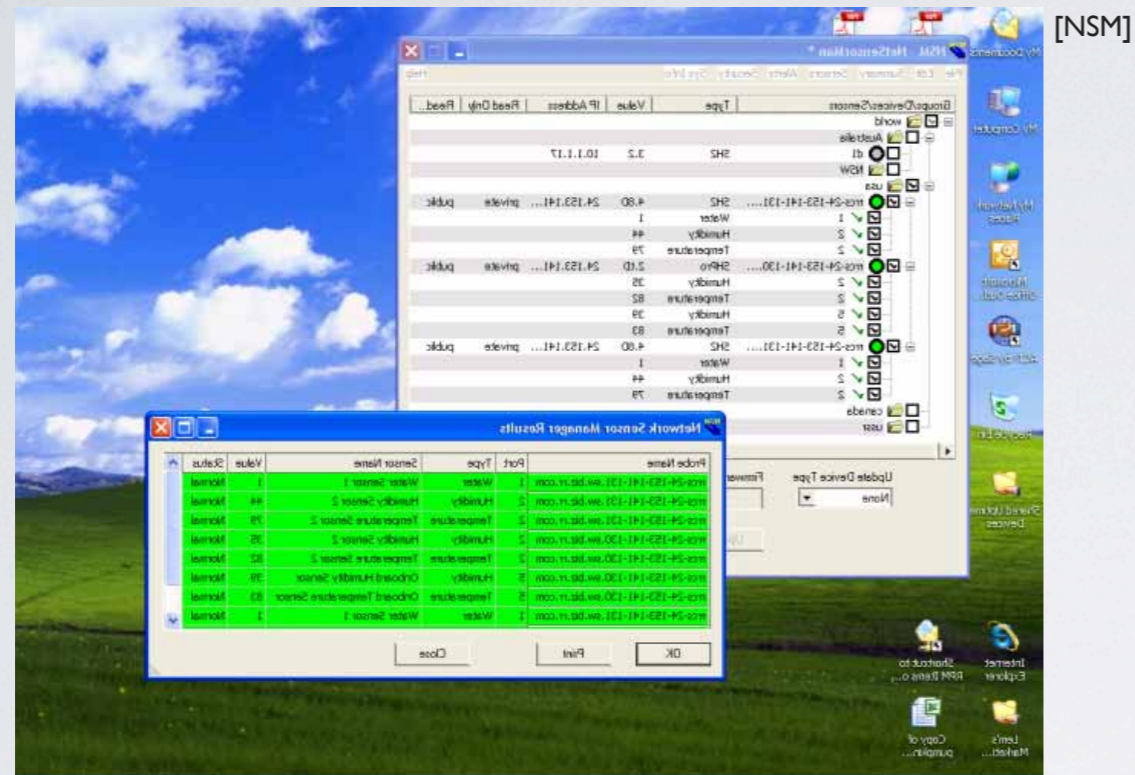
Text Message and Logging are Sent Via Cell Network





# NETWORK SENSOR MANAGER SOFTWARE

For Remote Physical Monitor CM and Sensor Hub™



Uptime Devices has committed to developing web-based monitoring products. For those wanting a little extra control, we offer Network Sensor Manager software. This software provides a centralized monitoring tool for *Remote Physical Monitor CM* and *Sensor Hub*.™

Network Sensor Manager software allows operators to mass configure large quantities of monitoring devices on multiple sites. From one interface, administrators can see a complete monitoring picture.

- Manage Multiple Uptime Devices Units From one screen
- Arrange Monitoring Consoles into Groups for Mass Configuration
- Administrative Control of Console Access and Operations By User
- Access Past Alerts by Pool/Date/Console