

Genuitec's Secure Delivery Center 2012

A Marketplace Inside Your Firewall
2012 Update 1 Overview

Company Introduction

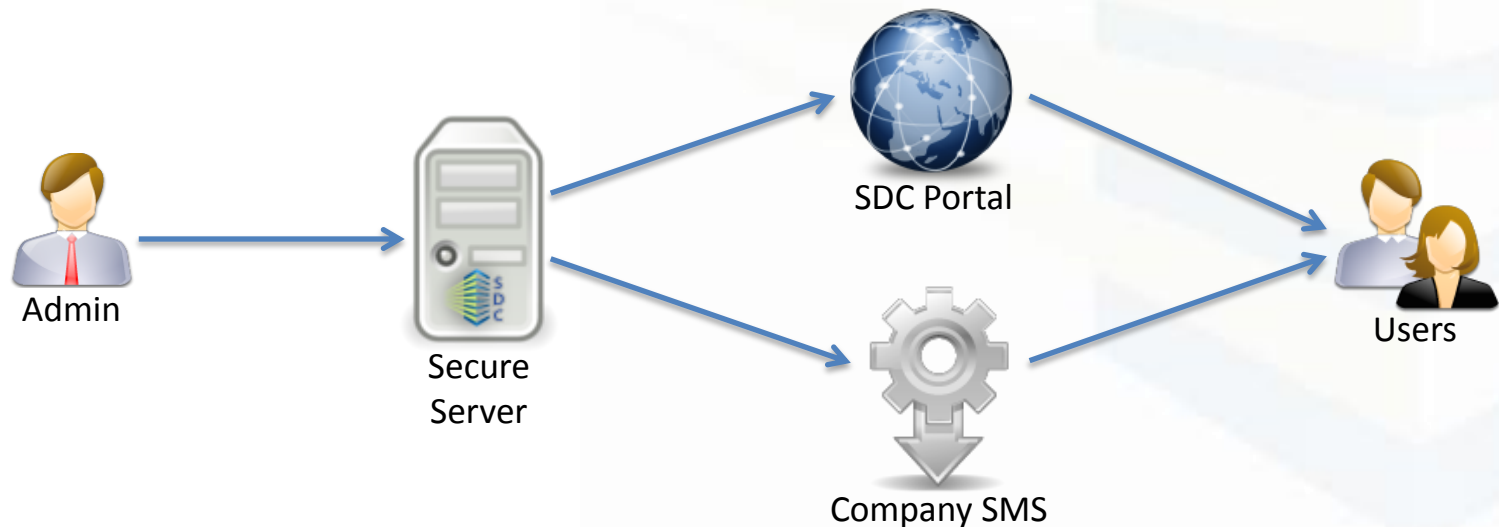
- Genuitec is a founding member of the Eclipse Foundation in 2003
 - With 13 million + downloads, MyEclipse is our flagship product
 - Delivered Eclipse products to millions of desktops – we understand Eclipse and OSS

myeclipse

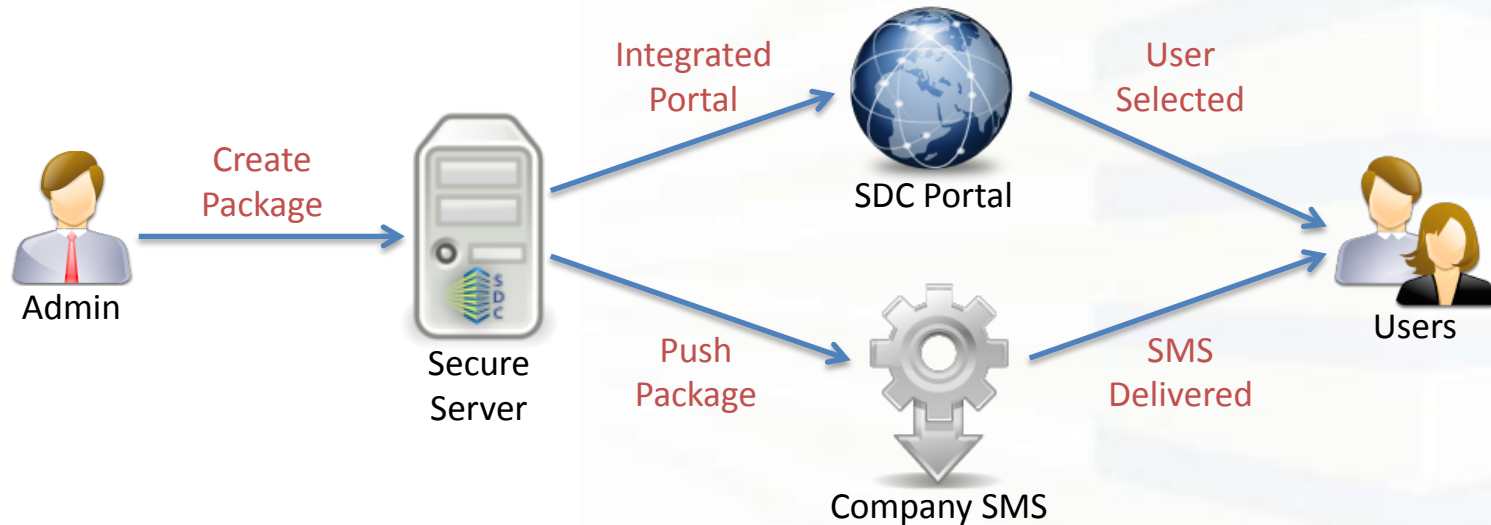


Brief overview of SDC

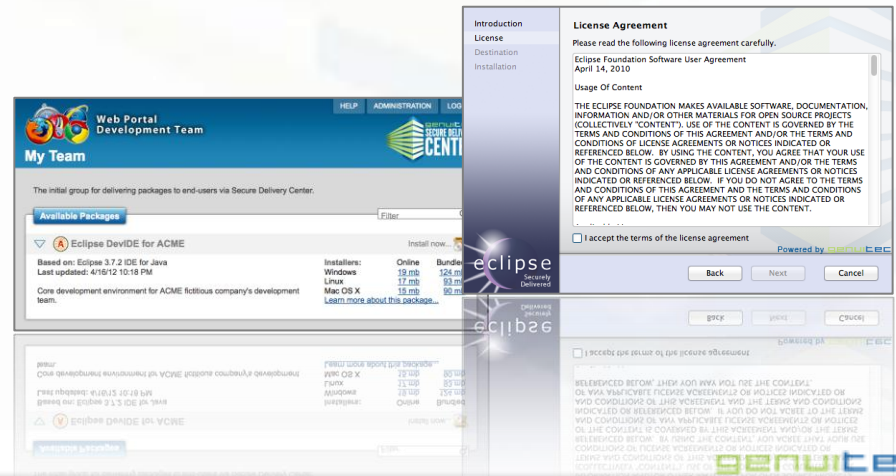
- Secure delivery of software packages
- Automated management of artifacts, sites & installers
- Turn-key management, reporting, and testing of software
- Secure end-user catalog for easy end-user add-ons



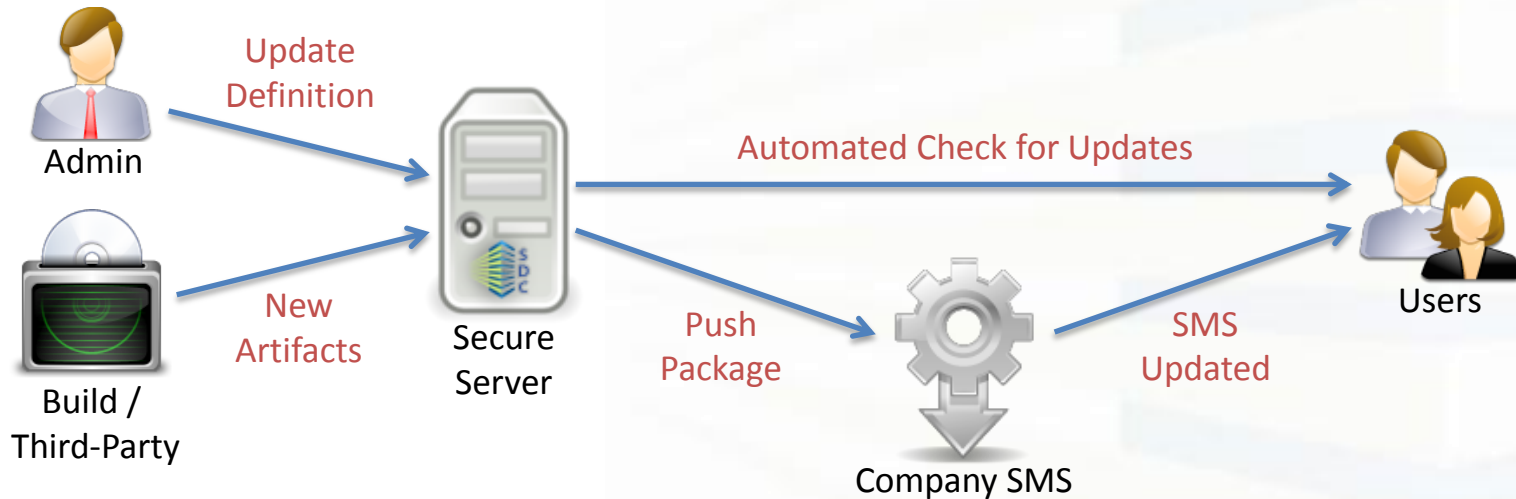
Initial rollout of software



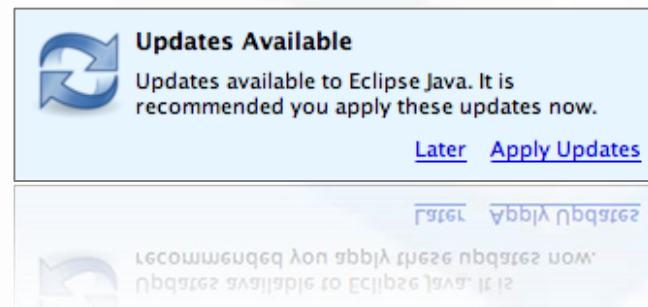
- Rollout via SMS or SDC server's portal
 - Includes delivery using physical media (DVDs)
 - Installers detect architectures automatically
 - Compatible with virtualization
- Group packages for access, or visibility
 - Brand and tailor installers for users



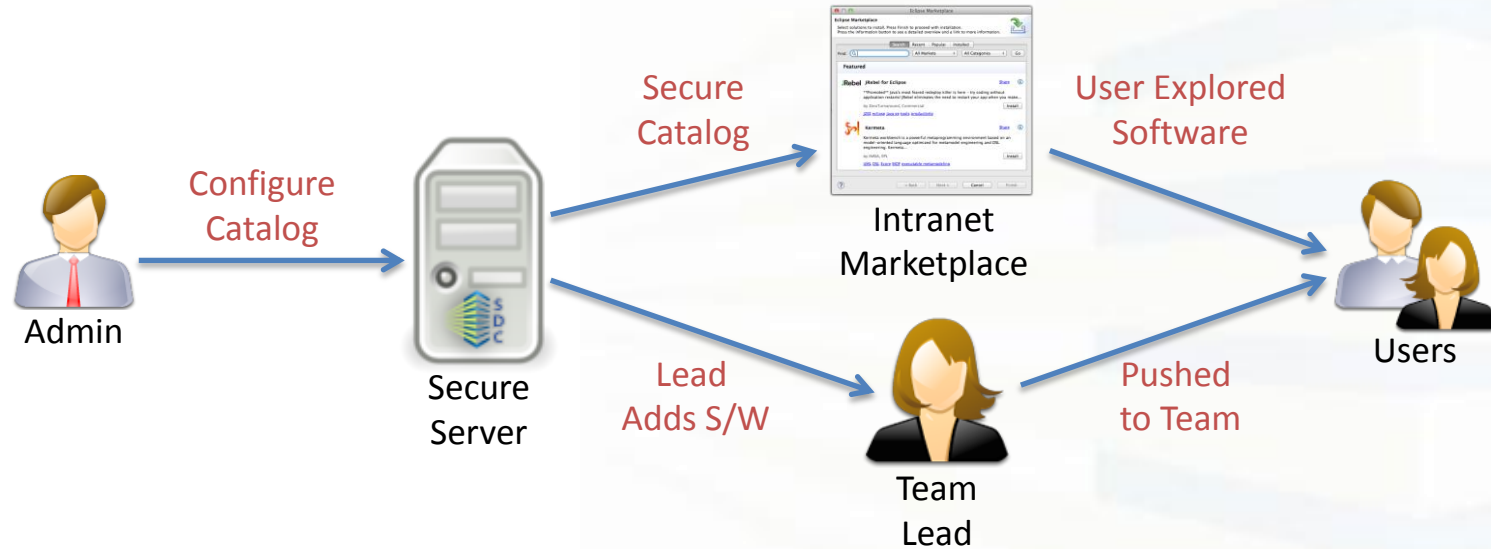
Package & software updates



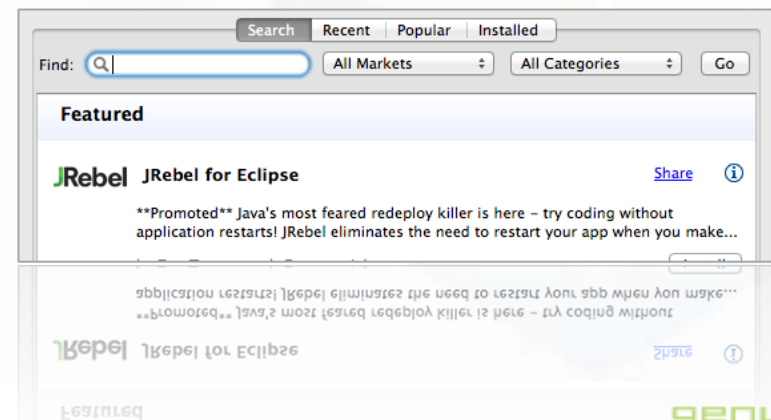
- Admins release changes to teams
 - Updates can be delivered via SDC server
- Builds can push updates to end-users
- Libraries and plugins updated in the server
- Updates can be mandatory or optional



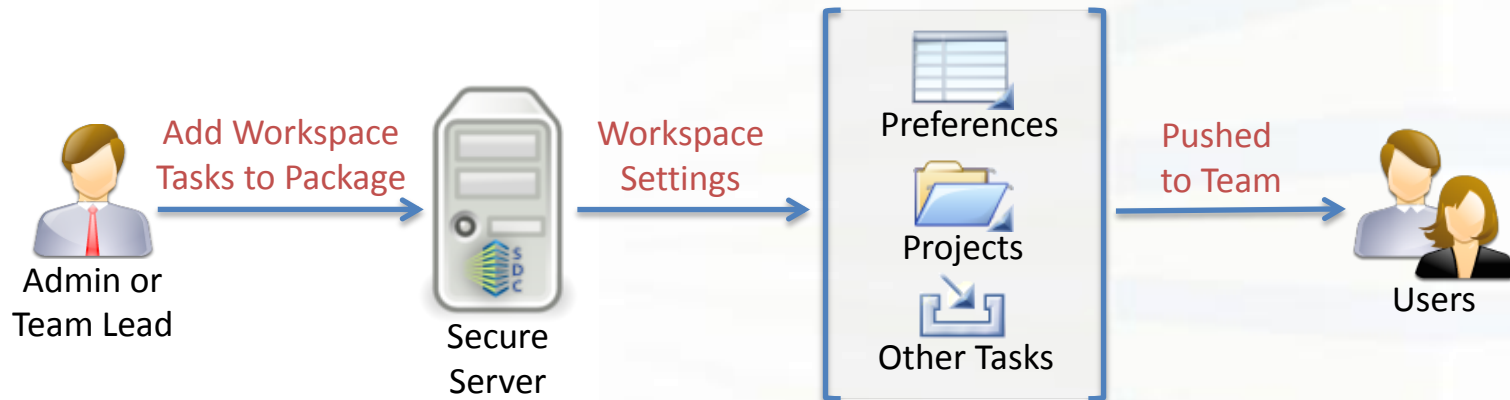
Secure catalog for users & team leads



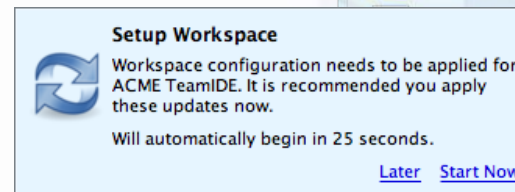
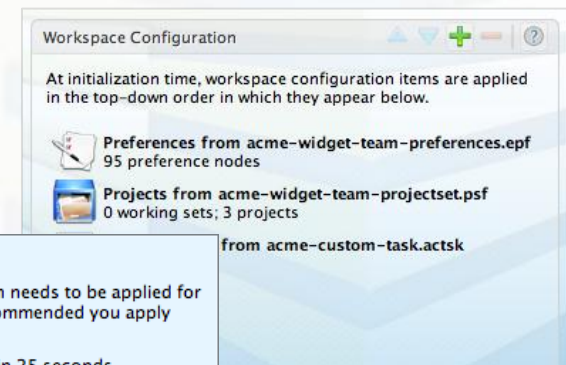
- Expose a Secure Marketplace to users
 - Feature software most used in your company
- Provide Team Lead a sanctioned catalog
- Manage catalog(s) via simple UI
- Familiar use of Eclipse Marketplace client



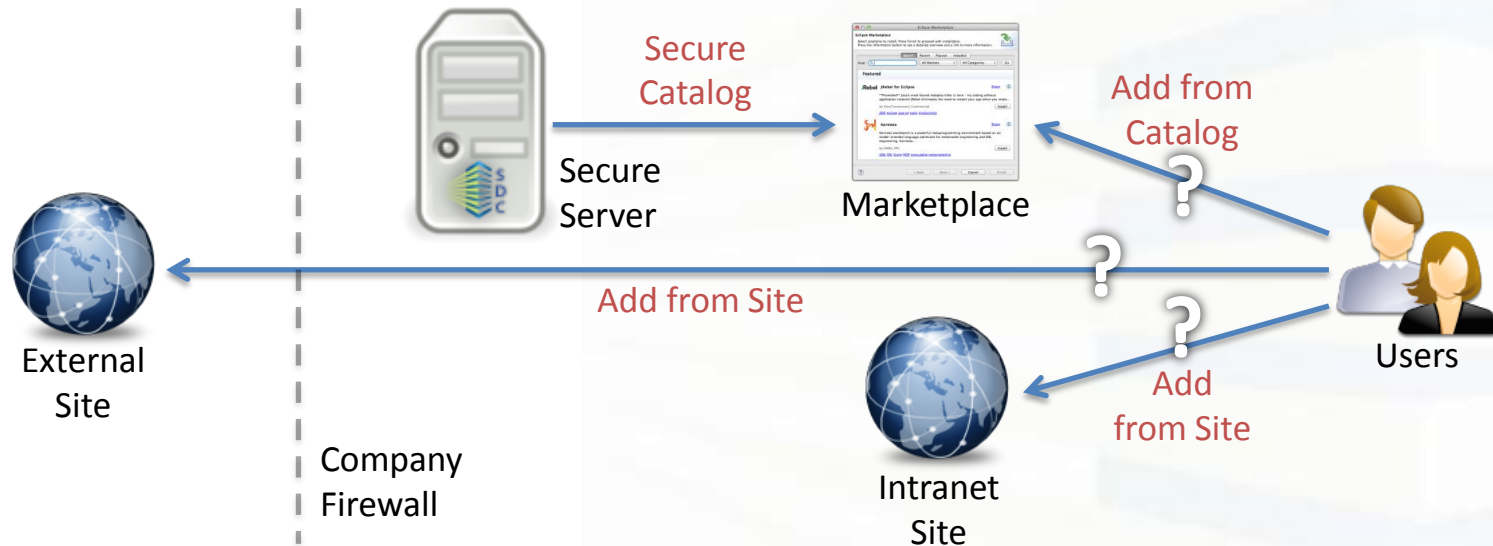
Efficient workspace automation



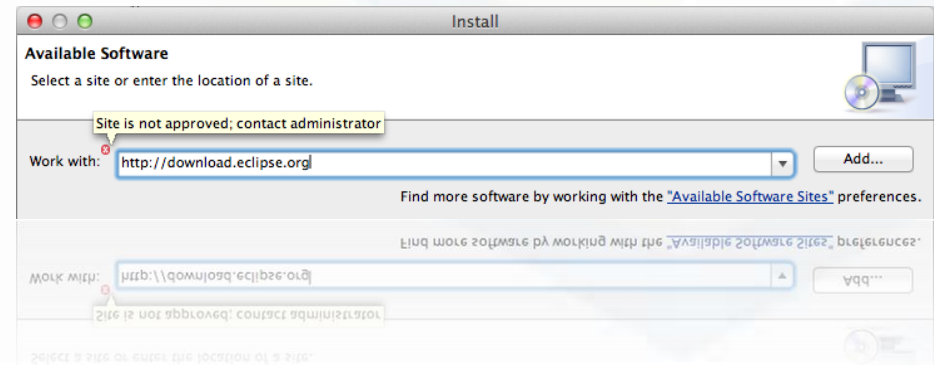
- Automate workspace setup and updates
- Efficient detection of ongoing changes
- Extensible via public API
 - Based on Google Workspace Mechanic
- Supports advanced custom actions



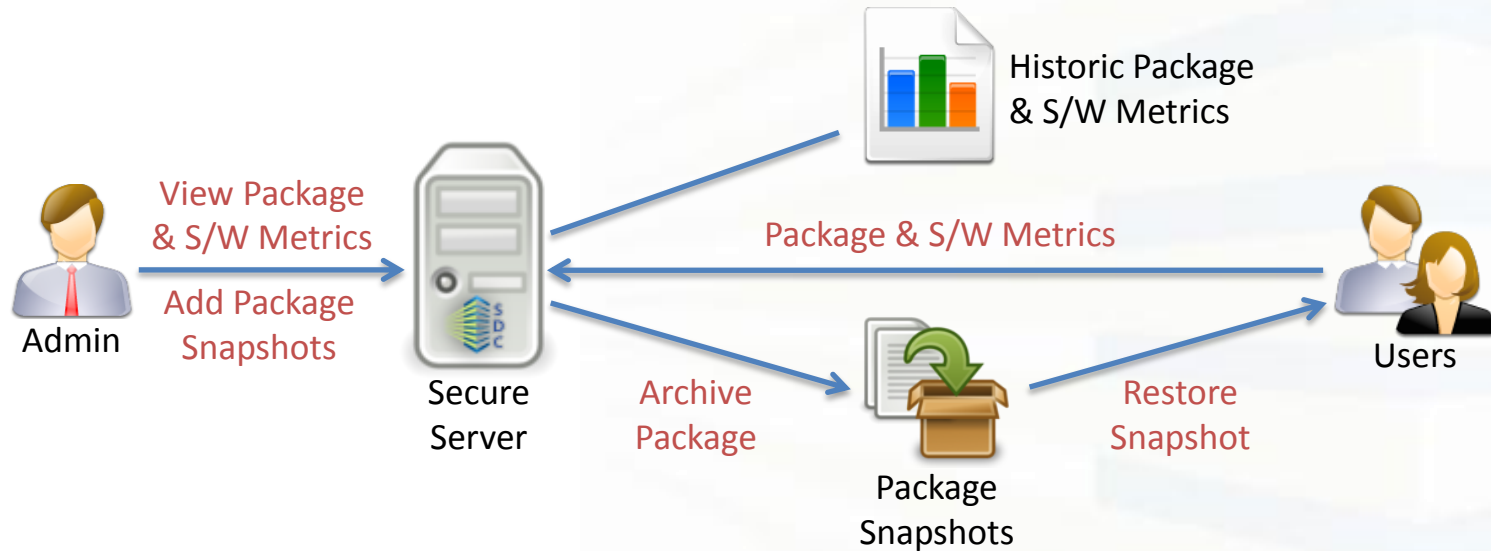
Lock down Eclipse, if desired



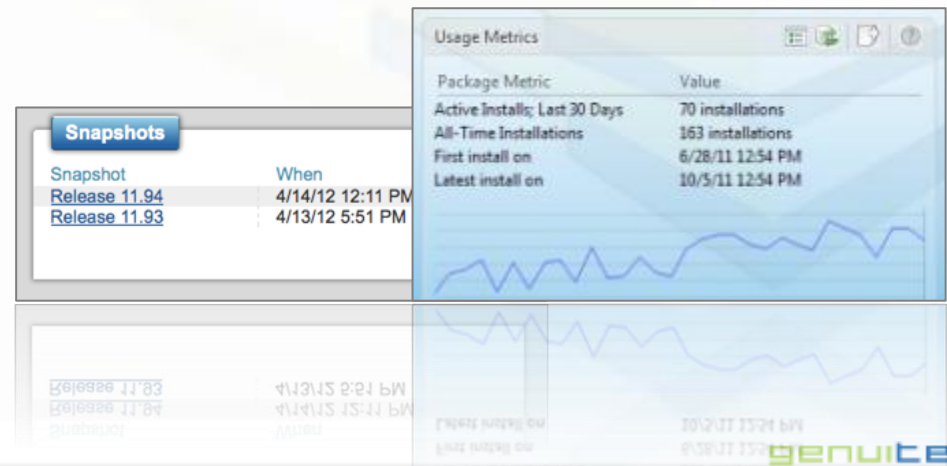
- Know and control software used by users
- Restrict access to certain update sites
 - Includes ability to wild-card URL patterns
- Provide only specific software on catalog
- Enforce security in UIs and low-level APIs



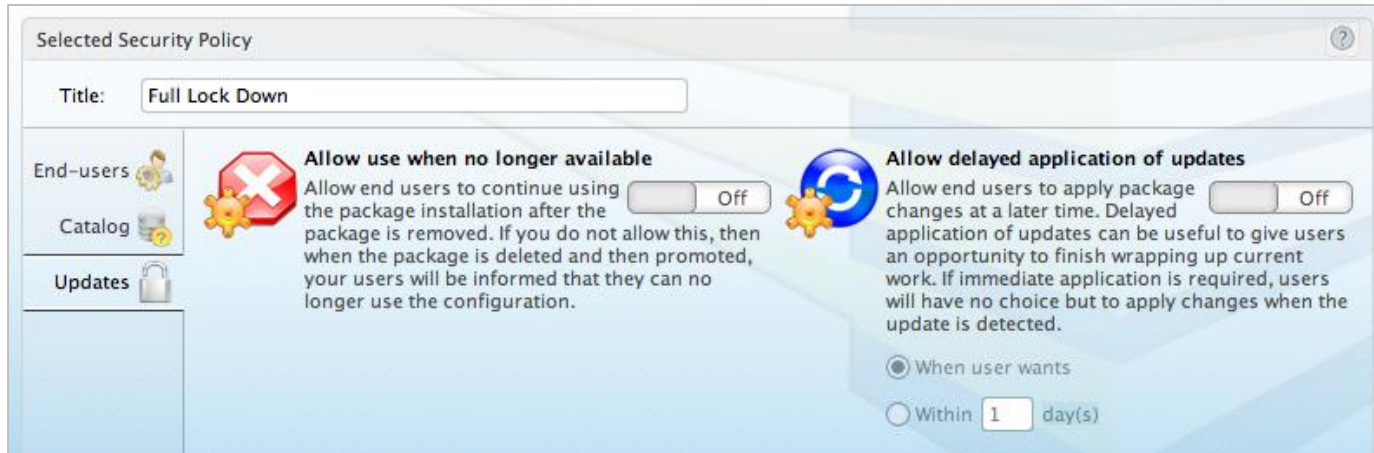
Package metrics & archives



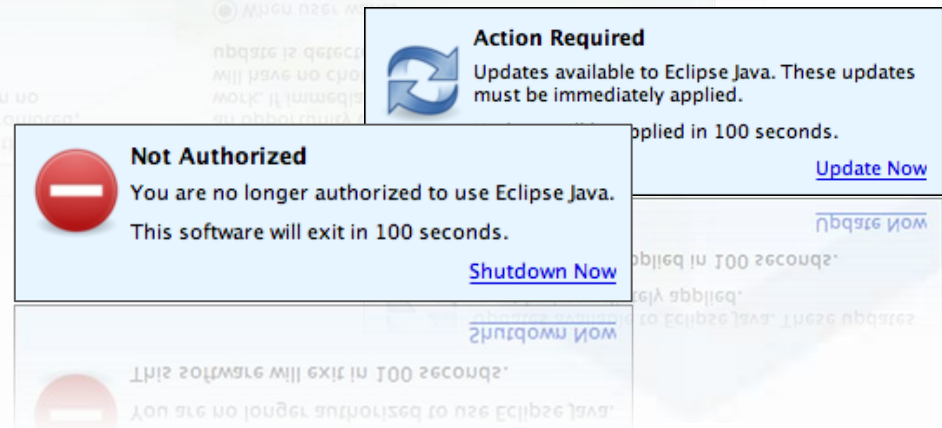
- Snapshot packages for archival
- Enable easy access for users to old tools
- Track usage of packages for auditing
 - Includes install, usage, update and uninstalls
- Report on trends of the secure system



EOL and mandatory updates



- Control how packages are managed
 - Choose the right level of enforcement
- Roll out mandatory updates to users
- Allow delayed application within X days
- Decommission securely obsolete packages



Certified packs & verified packages

Certified Popular Software Pack
Version: 2012 April
Collection of many popular plugins from the Eclipse community, certified by Genuitec for your usage.

Software	Version	Size	Released	Last Downloaded
Certified Eclipse Plugin Pack	2012 april	643mb	Apr 2, 2012	Never downloaded
Certified Eclipse Plugin Pack (GPL)	2012 april	74mb	Apr 2, 2012	Never downloaded

Oracle Java for Eclipse IDE
Version: 1.6.0 u31
Allows packaging of Oracle JRE with Eclipse IDEs for easy developer configuration.

Build and Verify

Before committing changes, it is recommended you verify the changes by testing the installation. Verify confirms the compatibility of selected software. Build creates an installer for your operating system. Install runs the installer. Each time you make a change, you should verify again.

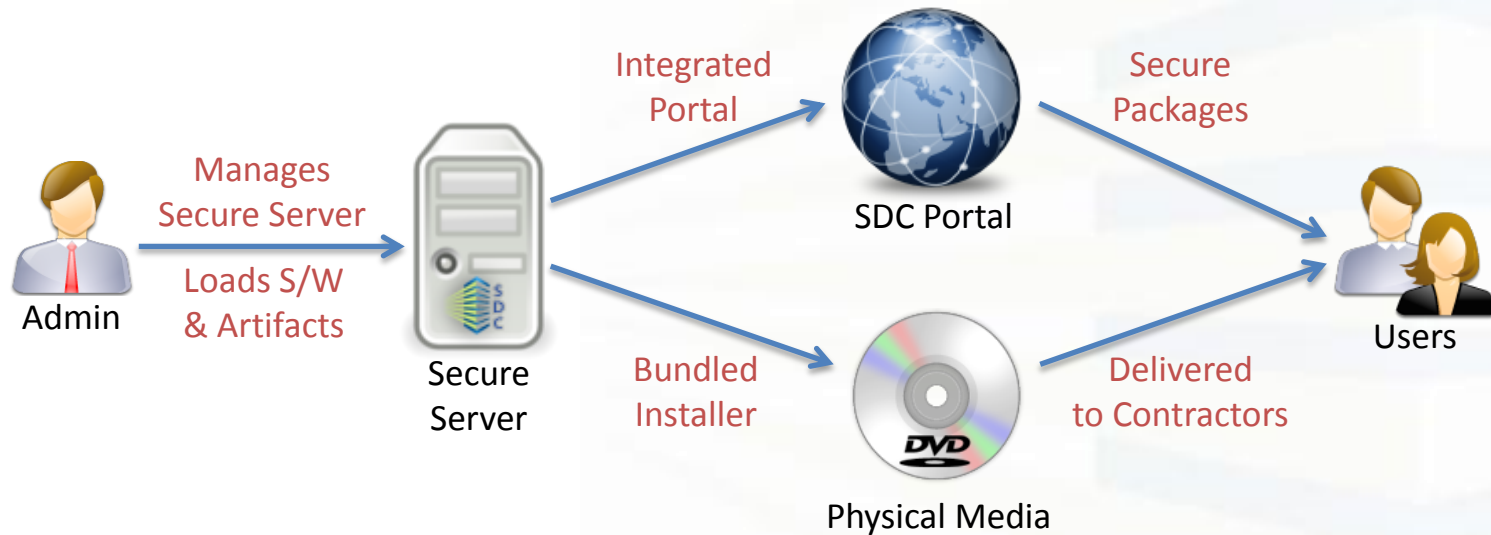
Verify Build Install Commit

- Genuitec provides you certified software
- Verify your own packages for integrity
 - Know your software will work without hassel
- Use most popular Eclipse plugins safely
- Easily provide your users a catalog of software

SDC: Possible Integrations

- *Standalone: SDC Standard*
 - SDC server can be used for secure delivery of packages
 - Available today for immediate usage
- *w/SMS: SDC with SMS*
 - SDC can be used to manage packages and control delivery of software released via SMS
 - Available today for immediate integration with SMS
- *Custom: Advanced Integration*
 - Advanced integrations including automated push from build system, automated rollout of packages, etc. available
 - Availability and timing based on complexity

Standalone SDC deployment



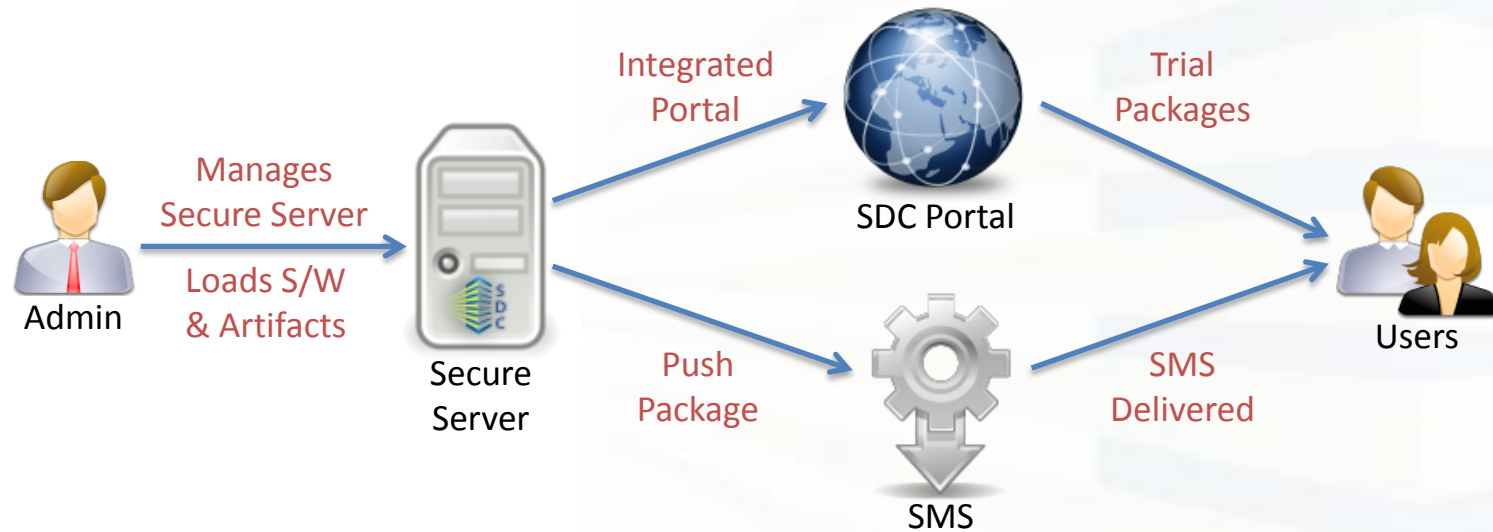
Core capabilities of solution

- Delivery of packages via rich portal
- Secure delivery and lockdown of packages
- Metrics collection and usage trending
- Intranet marketplace and software catalog
- Certified plugins and package verification

Availability and cost

- SDC immediately available for download
- Trial download off of genuitec.com/sdc
- USD \$75/seat
 - Volume discounts starting at 50 seats
 - Site licenses available

SDC integrated with SMS



Core capabilities of solution

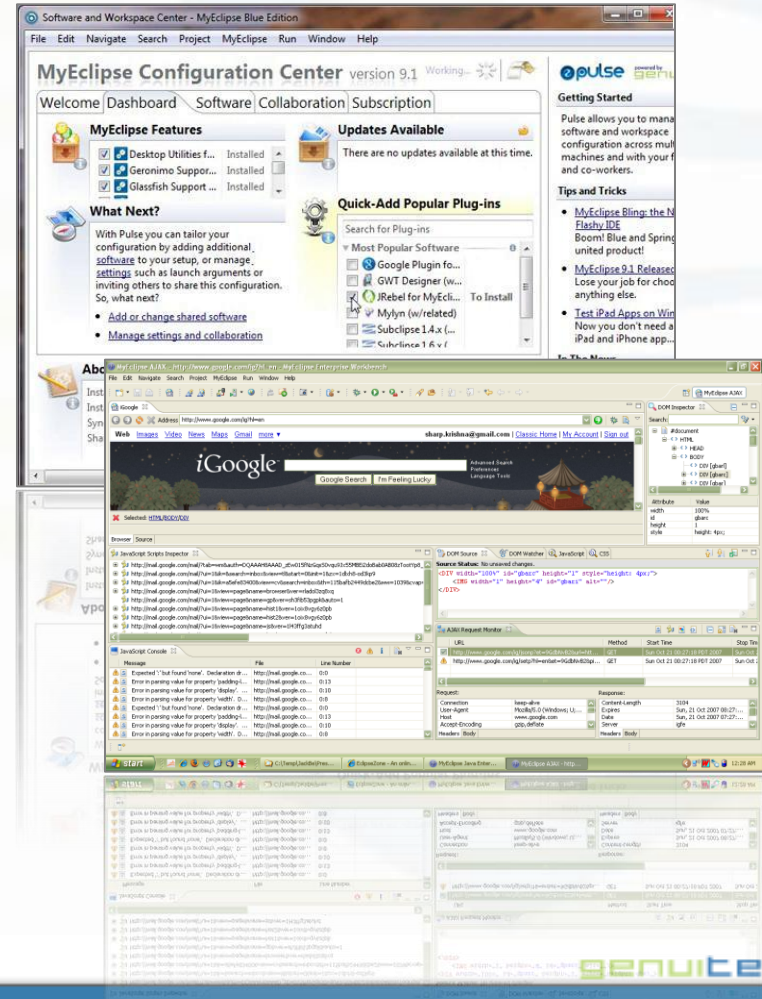
- Includes all from standalone, plus...
- Packages created and managed via SDC
- Installers distributed via SMS
- Updates optionally rolled out from SDC
- Testing packages released from SDC portal

Availability and cost

- SDC immediately available for download
- Trial download off of genuitec.com/sdc
- USD \$75/seat
 - Volume discounts starting at 50 seats
 - Site licenses available

Also from Genuitec, MyEclipse IDE

- Market leading IDE
 - Most affordable and comprehensive J2EE IDE and Web development IDE
 - Used 13 million times by global brands in finance, healthcare, insurance, technology and life sciences
- Major server technologies supported
 - Including IBM WebSphere support replacing need for RAD tools
 - Migrate Eclipse, MyEclipse and Rational projects between 35+ app servers in just a few clicks



Also from Genuitec, MobiOne

- Mobile application development
 - Develop cross-platform apps for mobile devices using drag-n-drop features
 - HTML5/CSS/JavaScript-driven for a hybrid app build model
- Advanced capabilities
 - Includes ability to develop iOS apps on Windows – no need to own a Mac or learn Objective-C
 - Ability to test apps by sending directly to user devices via cloud services



End of Overview



For questions or information on SDC, contact us at info@genuitec.com