

OAKWORKS[®] **MEDICAL**

Position for Success



IMAGING TABLES & ACCESSORIES

- Imaging Tables
- Urology & Lithotripsy Tables
- Spine Positioning System
- Pain Management Accessories

made in the USA
with US & imported parts





TABLE OF CONTENTS

4 MOVEMENT C-ARM IMAGING TABLES.....3-4
CFPM400
CFPM401

3 MOVEMENT C-ARM IMAGING TABLES.....5-7
CFPM300
CFPM301
CFPMB301

C-ARM IMAGING TABLES
CFPM100 8
CFPMFXH 9
DTPM300..... 10

UROLOGY TABLES 11-12
CFUR301
CFUR401

LITHOTRIPSY/UROLOGY TABLE..... 13-14
CFLU401

SPINE POSITIONING SYSTEM..... 15-18

ACCESSORIES 19-20

OAKWORKS[®] **MEDICAL**

Position for Success

OUR MISSION

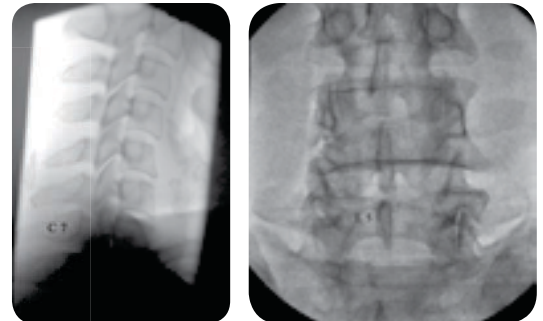
Oakworks[®] has been providing customers with innovative products, excellent service, and cost effective solutions for over 30 years. Oakworks[®] Medical has collaborated with leaders in the medical specialties we serve to create cutting edge designs that balance the needs of both patients and practitioners. We are committed to identifying the needs of our customers and providing solutions that are cost effective.

Our state-of-the-art 90,000 square foot factory in Pennsylvania, coupled with our advanced engineering department, allows us to quickly meet the needs of our customers. From custom designed tables that complement new technologies to quick turnarounds on our present product line, Oakworks[®] is uniquely positioned to meet your needs.

Since its inception, Oakworks[®] has been committed to health and safety. Ergonomics for practitioners are paramount in our design process and in our factory. We strive to secure the health of our planet and have partnered with Trees for the Future as Global cooling partners, committed to having a zero carbon foot print through the planting of trees.

Oakworks[®] Medical customer service reflects our commitment to making exceptionally effective products for your facility. We are dedicated to your satisfaction and confidently ensure our products will represent excellent value for many years to come.

We encourage you to explore our online video library detailing all the features of our Medical Table Line at www.oakworksmed.com



FOR MORE
INFORMATION
Visit www.oakworksmed.com

C-ARM IMAGING TABLE OVERVIEW



TOP DIMENSIONS

Integrated Headrest (IF)	22" x 84"
Rectangular (RT)	24" x 80"

CFPM400 & CFPM401

4 movement imaging tables

INCLUDED FEATURES		MOVEMENTS	
Patient Weight Capacity:	500lbs.	CFPM400	
Electric Height Range:	26" - 44"	Motion 1.....height range 26" - 44"	
Integrated Headrest Carbon Fiber Top	22"W x 84"L	Motion 2.....Trendelenburg tilt +15°/-12°	
Rectangular Carbon Fiber Top	24"W x 80"L	Motion 3.....10" longitudinal travel	
Warranty:	4 years parts, 1 year labor	Motion 4.....lateral tilt ±15°	
Certifications:	FDA listed, cETL approved, CE marked	CFPM401	
Patient Safety Strap		Motion 1.....height range 26" - 44"	
4" Casters		Motion 2.....Trendelenburg tilt +15°/-11°	
Hand Control (all motions)		Motion 3.....10" longitudinal travel	
Foot Control (all motions)		Motion 4.....±4" lateral travel	
1" Radiolucent Table Top Pad		OPTION CODES	
3 Cranial Positioning Pads (included with Integrated Headrest Top only)		5" Casters.....5C	
(1) 2" thick x 12" square			
(1) 4" thick x 12" square			
(1) Crescent face rest pad			



TOP DIMENSIONS

Integrated Headrest (IF)	22" x 84"
Rectangular (RT)	24" x 80"

CFPM300 & CFPM301

3 movement imaging tables

INCLUDED FEATURES		MOVEMENTS	
Patient Weight Capacity:	500 lbs.	CFPM300	
Electric Height Range:	CFPM 300 - 26" - 44" CFPM 301 - 25" - 43"	Motion 1.....height range 26" - 44"	
Integrated Headrest Carbon Fiber Top	22"W x 84"L	Motion 2.....Trendelenburg tilt +15°/-12°	
Rectangular Carbon Fiber Top	24"W x 80"L	Motion 3.....lateral tilt ±15°	
Warranty:	4 years parts, 1 year labor	CFPM301	
Certifications:	FDA listed, cETL approved, CE marked	Motion 1.....height range 25" - 43"	
Patient Safety Strap		Motion 2.....Trendelenburg tilt +15°/-11°	
4" Casters		Motion 3.....10" longitudinal travel	
Hand Control (all motions)		OPTION CODES	
Foot Control (all motions)		5" Casters.....5C	
1" Radiolucent Table Top Pad			
3 Cranial Positioning Pads (included with Integrated Headrest Top only)			
(1) 2" thick x 12" square			
(1) 4" thick x 12" square			
(1) Crescent face rest pad			



TOP DIMENSIONS

Rectangular (RT)	24" x 80"
------------------	-----------

750 lb. Bariatric Rated

CFPMB301

Bariatric imaging table

INCLUDED FEATURES		MOVEMENTS	
Patient Weight Capacity:	750 lbs.	CFPMB301	
Electric Height Range:	26.5" - 44.5"	Motion 1.....height range 26.5" - 44.5"	
Rectangular Bariatric Top	24"W x 80"L	Motion 2.....Trendelenburg tilt +15°/-11°	
Warranty:	4 years parts, 1 year labor	Motion 3.....10" longitudinal travel	
Certifications:	FDA listed, cETL approved, CE marked	OPTION CODES	
Patient Safety Strap		4" Casters.....4C	
Heavy Duty 5" Casters			
Hand Control (all motions)			
Foot Control (all motions)			
1" Radiolucent Table Top Pad			

ACCESSORIES

- T-rail Clamp
- 2" Radiolucent Table Top Pad



C-ARM IMAGING TABLE OVERVIEW



TOP DIMENSIONS	
Integrated Headrest (IF)	22" x 84"
Rectangular (RT)	24" x 80"

CFPM100

1 movement imaging table

INCLUDED FEATURES		MOVEMENTS
Patient Weight Capacity:	500 lbs.	CFPM100 Motion 1.....height range 22" - 40"
Electric Height Range:	22" - 40"	
Integrated Headrest Carbon Fiber Top	22"W x 84"L	OPTION CODES
Rectangular Carbon Fiber Top	24"W x 80"L	
Warranty:	4 years parts, 1 year labor	
Certifications:	FDA listed, cETL approved, CE marked	
Patient Safety Strap		
4" Casters		
Foot Control		
1" Radiolucent Table Top Pad		
3 Cranial Positioning Pads (included with Integrated Headrest Top only)		
(1) 2" thick x 12" square		
(1) 4" thick x 12" square		
(1) Crescent face rest pad		



TOP DIMENSIONS	
Integrated Headrest (IF)	22" x 84"
Rectangular (RT)	24" x 80"

CFPMFXH

fixed height imaging table

INCLUDED FEATURES		MOVEMENTS
Patient Weight Capacity:	500 lbs.	CFPMFXH Fixed height, no motion
Standard Height:	37"	
Integrated Headrest Carbon Fiber Top	22"W x 84"L	OPTION CODES
Carbon Fiber Rectangular Top	24"W x 80"L	
Warranty:	4 years parts, 1 year labor	
Certifications:	FDA listed, cETL approved, CE marked	
Patient Safety Strap		
4" Casters		
1" Radiolucent Table Top Pad		
3 Cranial Positioning Pads (included with Integrated Headrest Top only)		
(1) 2" thick x 12" square		
(1) 4" thick x 12" square		
(1) Crescent face rest pad		



TOP DIMENSIONS	
Rectangular (RT)	24" x 78"

DTPM300

3 movement, dual tower imaging table

INCLUDED FEATURES		MOVEMENTS
Patient Weight Capacity:	450 lbs.	DTPM300 Motion 1.....height range 24" - 40" Motion 2.....23" manual travel top Motion 3.....Trendelenburg tilt ±14°
Electric Height Range:	24" - 40"	
Rectangular Polycarbonate Top Dimensions:	24"W x 78"L	
Warranty:	4 years parts, 1 year labor	OPTION CODES
Certifications:	FDA listed, cETL approved, CE marked	
Patient Safety Strap		
4" Casters		
Hand Control (Height, Trendelenburg/Reverse)		
Foot Control (Height)		
1" Radiolucent Table Top Pad		
5" Casters	5C	
Fixed T-rail: 78" Long	7L (Left), 7R (Right)	
Fixed T-rail: custom length		

ACCESSORIES

- T-rail Clamp
- 2" Radiolucent Table Top Pad



CFPM400 & CFPM40I

4 Movement Tables



- Industry's Widest Adjustable Height Range 26"- 44"
- 56" Metal Free Imaging Space
- Cost Effective 4 Movement Table
- 500 lbs. Patient Weight Capacity
- **Warranty: 4 years parts, 1 year labor**



RECTANGULAR TOP OPTION



See **OAKWORKS®** CFPM400 in action!

Use your smartphone to view the CFPM400 video or watch online at www.oakworksmed.com.

CFPM400 & CFPM40I PRODUCT SPECS

PATIENT WEIGHT CAPACITY	500 lbs. (227kg.)
CARBON FIBER TOP	Integrated Headrest 22" x 84" (56cm x 214cm) Rectangular 24" x 80" (61cm x 203cm)
CFPM400 - MOVEMENTS	
MOTION 1	height range 26" - 44" (66cm - 112cm)
MOTION 2	Trendelenburg tilt +15°/-12°
MOTION 3	10" (25cm) longitudinal travel
MOTION 4	lateral tilt ±15°
CFPM40I - MOVEMENTS	
MOTION 1	height range 26" - 44" (66cm - 112cm)
MOTION 2	Trendelenburg tilt +15°/-11°
MOTION 3	10" (25cm) longitudinal travel
MOTION 4	±4" (10cm) lateral travel
CONTROLS	1 foot (4 motion), 1 hand (4 motion)
TABLE WEIGHT	475 lbs. (216 kg.)
WARRANTY	4 years parts, 1 year labor
CERTIFICATIONS	FDA listed, cETL approved, CE marked



Certifications: UL 60601-1; CSA C22.2 # 601.1, IEC 60601-1; IEC 60601-2-32 IEC 60601-1-2



CFPM400 & CFPM401

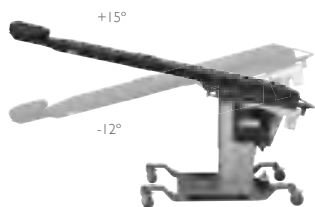
4 Movement Table Features



CFPM400



Motion 1
HEIGHT RANGE 26" - 44"



Motion 2
TRENDLENBURG TILT +15°/-12°



Motion 3
LONGITUDINAL TRAVEL 10"

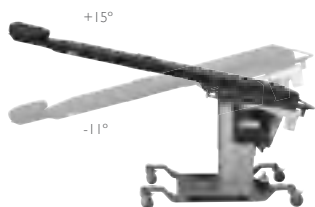


Motion 4
LATERAL TILT ±15°

CFPM401



Motion 1
HEIGHT RANGE 26" - 44"



Motion 2
TRENDLENBURG TILT +15°/-11°



Motion 3
LONGITUDINAL TRAVEL 10"



Motion 4
LATERAL TRAVEL ±4"

INCLUDED FEATURES:

Patient Safety Strap

84" L with 24" of Velcro® at each end



1" Comfort Foam™ Table Top Pad

4" Casters

3 Cranial Positioning Pads (Integrated Headrest Top Only)

- 2" (5 cm) thick x 12" (31 cm) (square)
- 4" (10 cm) thick x 12" (31 cm) (square)
- Crescent face rest pad



made in the USA
with US & imported parts



CFPM300 & CFPM301

3 Movement Tables



- **Industry's Widest Adjustable Height Range of 18"**
- 56" Metal Free Imaging Space
- Cost Effective 3 Movement Table
- 500 lbs. Patient Weight Capacity
- **Warranty: 4 years parts, 1 year labor**



RECTANGULAR TOP OPTION

CFPM300 & CFPM301 PRODUCT SPECS

PATIENT WEIGHT CAPACITY	500 lbs. (227kg.)
CARBON FIBER TOP	Integrated Headrest 22" x 84" (56cm x 214cm) Rectangular 24" x 80" (61cm x 203cm)
CFPM300 - MOVEMENTS	
MOTION 1	height range 26" - 44" (66cm - 112cm)
MOTION 2	Trendelenburg tilt +15°/-12°
MOTION 3	lateral tilt ±15°
CFPM301 - MOVEMENTS	
MOTION 1	height range 25" - 43" (66cm - 112cm)
MOTION 2	Trendelenburg tilt +15°/-11°
MOTION 3	10" (25cm) longitudinal travel
CONTROLS	1 foot (3 motion), 1 hand (3 motion)
TABLE WEIGHT	475 lbs. (216 kg.)
WARRANTY	4 years parts, 1 year labor
CERTIFICATIONS	FDA listed, cETL approved, CE marked



Certifications: UL 60601-1; CSA C22.2 # 601.1, IEC 60601-1; IEC 60601-2-32 IEC 60601-1-2

CFPM300 & CFPM301

3 Movement Table Features

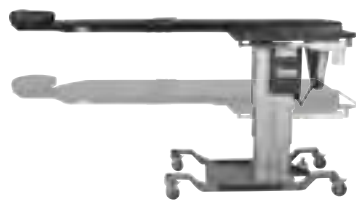


CFPM300

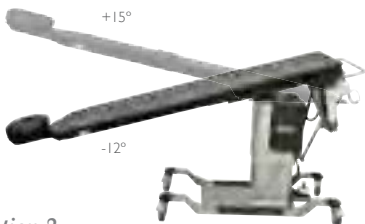


Motion 1
HEIGHT RANGE 26" - 44"

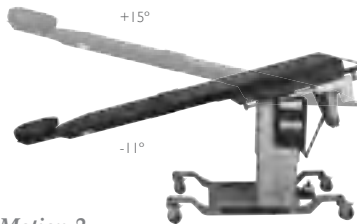
CFPM301



Motion 1
HEIGHT RANGE 25" - 43"



Motion 2
TRENDLENBURG TILT +15°/-12°



Motion 2
TRENDLENBURG TILT +15°/-11°



Motion 3
LATERAL TILT ±15°



Motion 3
LONGITUDINAL TRAVEL 10"

INCLUDED FEATURES:

Patient Safety Strap

84" L with 24" of Velcro® at each end



1" Comfort Foam™ Table Top Pad

4" Casters

3 Cranial Positioning Pads (Integrated Headrest Top Only)

- 2" (5 cm) thick x 12" (31 cm) (square)
- 4" (10 cm) thick x 12" (31 cm) (square)
- Crescent face rest pad



made in the USA
with US & imported parts



CFPMB30 I

Electric 3 Movement, 750 lb. Bariatric Rated Imaging Table

- 750 lb. Patient Weight Capacity
- Best Adjustable Height Range **26.5" - 44.5" Industry's Lowest**
- Warranty: 4 years parts, 1 year labor
- Cost Effective 3 Movement Table
- 52.5" Metal Free Imaging Space



Motion 1

HEIGHT RANGE 26.5" - 44.5"



Motion 2

TRENDELENBURG TILT +15°/-11°



Motion 3

LONGITUDINAL TRAVEL 10"



INCLUDED FEATURES:

Heavy Duty 5" Casters

Patient Safety Strap

84" L with 24" of Velcro® at each end



1" Comfort Foam™ Table Top Pad

PRODUCT SPECS

PATIENT WEIGHT CAPACITY	750 lbs. (340kg.)
BARIATRIC TOP	Rectangular 24" x 80" (61 cm x 203cm)
MOTION 1	height range 26.5" - 44.5" (67cm - 113cm)
MOTION 2	Trendelenburg tilt +15°/-11°
MOTION 3	4" (10cm) longitudinal travel
CONTROLS	1 foot (3 motion), 1 hand (3 motion)
TABLE WEIGHT	475 lbs. (216 kg.)
WARRANTY	4 years parts, 1 year labor
CERTIFICATIONS	FDA listed, cETL approved, CE marked

OAKWORKS[®]
MEDICAL

made in the USA
with US & imported parts



Certifications: UL 60601-1; CSA C22.2 # 601.1, IEC 60601-1; IEC 60601-2-32 IEC 60601-1-2

CFPM100

1 Movement Table



- 56" Metal Free Imaging Space
- 500 lb. Patient Weight Capacity
- **Warranty: 4 years parts, 1 year labor**



RECTANGULAR TOP OPTION

ELECTRIC ADJUSTABLE
table height range of 22"- 40"



INCLUDED FEATURES:

Patient Safety Strap

84" L with 24" of Velcro® at each end



1" Comfort Foam™ Table Top Pad

4" Casters

3 Cranial Positioning Pads

(Integrated Headrest Top Only)

- 2" (5 cm) thick x 12" (31 cm) (square)
- 4" (10 cm) thick x 12" (31 cm) (square)
- Crescent face rest pad



PRODUCT SPECS

PATIENT WEIGHT CAPACITY	500 lbs. (227kg.)
CARBON FIBER TOP	Integrated Headrest 22" x 84" (56cm x 214cm) Rectangular 24" x 80" (61cm x 203cm)
MOTION 1	height range 22" - 40" (56cm - 102cm)
CONTROLS	1 foot (1 motion)
TABLE WEIGHT	343 lbs. (156 kg.)
WARRANTY	4 years parts, 1 year labor
CERTIFICATIONS	FDA listed, cETL approved, CE marked



Certifications: UL 60601-1; CSA C22.2 # 601.1,
IEC 60601-1; IEC 60601-2-32 IEC 60601-1-2

made in the USA
with US & imported parts



OAKWORKS
MEDICAL

CFPMFXH

Fixed Height Table



RECTANGULAR TOP OPTION



- **Best value in full carbon fiber top design**
- **500 lb. Patient Weight Capacity**
- 56" of Metal Free Imaging Area
- **Warranty: 4 years parts, 1 year labor**

PRODUCT SPECS

PATIENT WEIGHT CAPACITY	500 lbs. (227kg.)
CARBON FIBER TOP	Integrated Headrest 22" x 84" (56cm x 214cm) Rectangular 24" x 80" (61cm x 203cm)
HEIGHT	Standard Height 37" (94cm) Custom Fixed Height 31" - 36" (79cm - 91cm)
CONTROLS	n/a
TABLE WEIGHT	343 lbs. (156 kg.)
WARRANTY	4 years parts, 1 year labor
CERTIFICATIONS	FDA listed, cETL approved, CE marked

INCLUDED FEATURES:

Patient Safety Strap

84" L with 24" of Velcro® at each end



1" Comfort Foam™ Table Top Pad

4" Casters

3 Cranial Positioning Pads

(Integrated Headrest Top Only)

- 2" (5 cm) thick x 12" (31 cm) (square)
- 4" (10 cm) thick x 12" (31 cm) (square)
- Crescent face rest pad



Certifications: UL 60601-1; CSA C22.2 # 601.1, IEC 60601-1; IEC 60601-2-32 IEC 60601-1-2



DTPM300

3 Movement Table



- **Most Cost-effective 3 Movement Imaging Table**
- 2 Tower Lift Design
- 40" Open Space Between Towers
- **Warranty: 4 years parts, 1 year labor**

Adjustable table height range of 24"- 40"
INDUSTRY'S LOWEST!

PRODUCT SPECS

PATIENT WEIGHT CAPACITY	450lbs. (205kg.)
RECTANGULAR POLYCARBONATE TOP	24" (61 cm) W, 78" (198 cm) L
MOTION 1	height range 24" - 40" (61 cm - 102cm)
MOTION 2	23" (56 cm) overall manual travel top
MOTION 3	Trendelenburg tilt $\pm 14^\circ$
CONTROLS	1 foot (motion 1), 1 hand (motion 1 & 3)
TABLE WEIGHT	354lbs. (161kg.)
WARRANTY	4 years parts, 1 year labor
CERTIFICATIONS	FDA listed, cETL approved, CE marked

INCLUDED FEATURES:

Patient Safety Strap
 84" L with 24" of Velcro® at each end



1" Comfort Foam™ Table Top Pad

4" Casters



Certifications: UL 60601-1; CSA C22.2 # 601.1, IEC 60601-1; IEC 60601-2-32 IEC 60601-1-2



CFUR30 I & CFUR40 I

*3 & 4 movement
Urology Tables*

CFUR30 I

3 movement

CFUR40 I

4 movement



- Choice of 3 or 4 motions
- **3 table extensions included**
- 52" metal-free imaging area
- 500 lb. Patient Weight Capacity
- **Warranty: 4 years parts, 1 year labor**



23" W x 47" L
CARBON FIBER TOP

Metal-free perineal end of tabletop for unobstructed fluoroscopy access.
Imaging Area 19" W x 24" L (48cm x 61cm)

Radiolucent patient transfer extension creates 53" long metal-free imaging area between the Trails.

3 RADIOLUCENT EXTENSIONS

Configure top and extensions to fit the need.



4" LOCKING CASTERS



(1) 23" WIDE X 28" LONG RADIOLUCENT PATIENT TRANSFER EXTENSION



Lightweight design can be easily removed or used for general imaging when a full length diving board table design is required.

(2) 5" X 24" RADIOLUCENT LATERAL EXTENSIONS



Two removable lateral extensions slide and lock on T-rails to create 33" wide support.

BUILT-IN TRANSPORT HANDLE



PROTECTIVE CLEAR PVC DRAPE *Clips onto T-rail*



INCLUDED FEATURES:

Patient Safety Strap

84" L with 24" of Velcro® at each end



1" Comfort Foam™ Table Top Pad

4" Casters

Industry Standard Full Length T-rails on each side

The Integrated T-rails are US standard size of .375" (9.5mm) thick by 1.25" (28.6mm) wide.

Digital Angle Gauge

Urology Bag Hoop

Model: Urocatch® with intergrak clamps (Bag not included)



CFUR301 & CFUR401 PRODUCT SPECS

PATIENT WEIGHT CAPACITY	500 lbs. (227kg.) Included Extensions - 200 lbs. (90kg.)
CARBON FIBER TOP	23" x 47" (58cm x 119cm)
CFUR301 - MOVEMENTS	
MOTION 1	height range 25.5" - 43.5" (65cm - 110cm)
MOTION 2	Trendelenburg tilt +15°/-11°
MOTION 3	10" (25cm) longitudinal travel
CFUR401 - MOVEMENTS	
MOTION 1	height range 26.5" - 44.5" (67cm - 114cm)
MOTION 2	Trendelenburg tilt +15°/-11°
MOTION 3	10" (25cm) longitudinal travel
MOTION 4	± 4" (10cm) lateral travel
INCLUDED EXTENSIONS	(1) Radiolucent Patient Transfer Extension 23" x 28" (58cm x 71cm) (2) Radiolucent Lateral Extensions 5" x 24" (12cm x 61cm)
OPTIONS	5" Casters
ACCESSORIES	2" Comfort Foam™ Table Top Pad, Protective Clear PVC Drape
CONTROLS	1 foot (3 motion), 1 hand (3 motion)
TABLE WEIGHT	CFUR301 - 568 lbs. (258kg.) CFUR401 - 590 lbs. (268kg.)
WARRANTY	4 years parts, 1 year labor
CERTIFICATIONS	FDA listed, cETL approved, CE marked



Certifications: UL 60601-1; CSA C22.2 # 601.1, IEC 60601-1; IEC 60601-2-32 IEC 60601-1-2



made in the USA
with US & imported parts



CFLU40 I

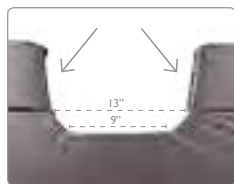
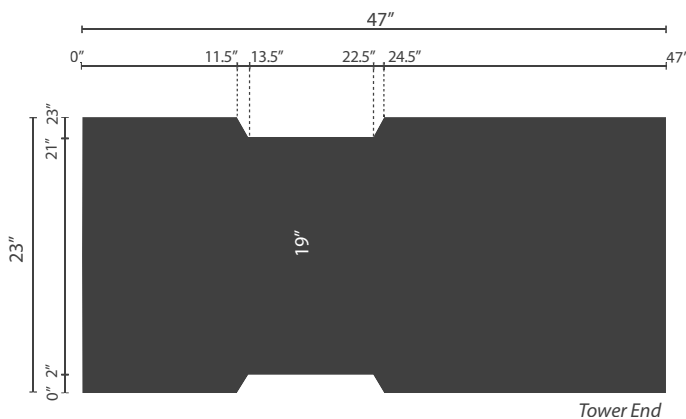
4 movement Lithotripsy/Urology Table



- 500 lb. Patient Weight Capacity
- Left & right Lithotripter access
- 4 motion table
- **Converts to full featured Urology table in seconds**
- Designed for mobile or stationary use
- **4 years parts, 1 year labor warranty**

23" W x 47" L
CARBON FIBER TOP

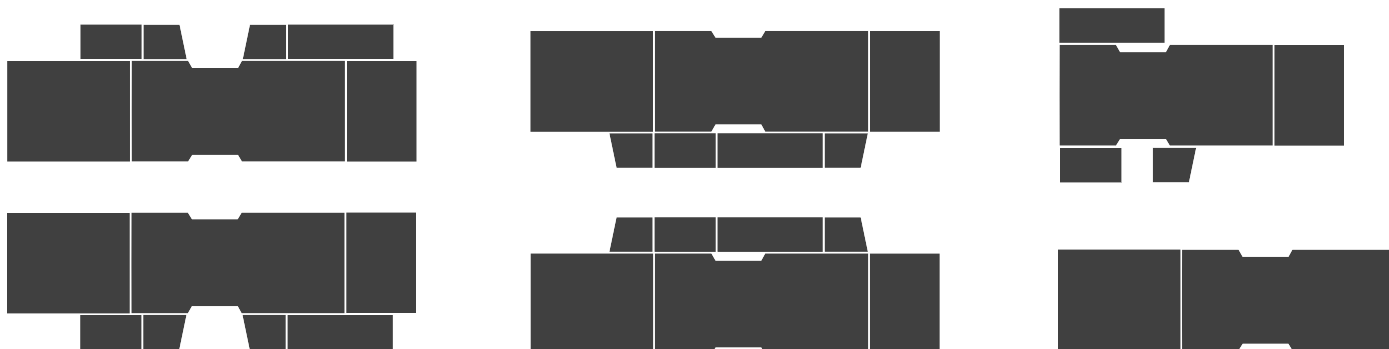
Imaging Area 19" W x 23.5" L (48cm x 59cm)



Angled panels fit recess and can be adjusted along T-rails on each side

6 RADIOLUCENT EXTENSIONS

Easy to attach and offer many different configurations.



SHOWN WITH UROLOGY CONFIGURATION

Compatible with all legholders using the U.S. standard side T-rail attachment systems.

HEAVY DUTY 5" LOCKING CASTERS



T-RAIL SLIDE & LOCK LATERAL EXTENSIONS

2 end extensions and 4 lateral extensions are included and easily lock onto T-rails on either side of the table.

CFLU40I PRODUCT SPECS

PATIENT WEIGHT CAPACITY	500 lbs. (227kg.) Included Extensions - 200 lbs. (90kg.)
CARBON FIBER TOP	23" x 47" (58cm x 119cm)
MOTION 1	height range 27.5" - 45.5" (69cm - 114cm)
MOTION 2	Trendelenburg tilt +15°-11°
MOTION 3	10" (25cm) longitudinal travel
MOTION 4	± 4" (10cm) lateral travel
INCLUDED EXTENSIONS	(1) End Extension-23" x 28" (58cm x 71cm) (1) Short End Extension MUST SPECIFY: 23" x 16" (58cm x 40cm) or 23" x 20" (58cm x 50cm) (1) Lateral Extension-8" x 24" (20cm x 60cm) (1) Lateral Extension-8" x 14" (20cm x 36cm) (2) Angled Lateral Extensions-8" x 11" (20cm x 28cm)
OPTIONS	4" Casters
ACCESSORIES	2" Comfort Foam™ Table Top Pad, Protective Clear PVC Drape
CONTROLS	1 foot (4 motion), 1 hand (4 motion)
TABLE WEIGHT	618 lbs. (280kg.)
WARRANTY	4 years parts, 1 year labor
CERTIFICATIONS	FDA listed, cETL approved, CE marked

INCLUDED FEATURES:

Patient Safety Strap

84" L with 24" of Velcro® at each end



1" Comfort Foam™ Table Top Pad

Heavy Duty 5" Casters

Industry Standard Full Length T-rails on each side

The Integrated T-rails are US standard size of .375" (9.5mm) thick by 1.25" (28.6mm) wide.

Digital Angle Gauge

Urology Bag Hoop

Model: Urocatch® with intertrak clamps
(Bag not included)



made in the USA
with US & imported parts



Certifications: UL 60601-1; CSA C22.2 # 601.1,
IEC 60601-1; IEC 60601-2-32 IEC 60601-1-2

SPINE POSITIONING SYSTEM

Package includes everything listed here.



“The Spine Positioning System solves imaging, stability and comfort issues associated with performance of spine procedures. The cervical and thoracic spine including the cervicothoracic junction can now be visualized in AP, oblique and lateral projections regardless of the patient’s body habitus. All posterior approach spine procedures can now be accurately performed as visualization of the necessary anatomic landmarks is possible due to the unique design of the Spine Positioning System.”

Paul Dreyfuss, MD

PRODUCT SPECS

WEIGHT:	20 LBS (9 KG)
FRAME WITH FACE REST (1):	12" X 33.5" (30 X 85 CM)
CRESCENT FACE PAD (1):	12" (30 CM) DIAMETER
TORSO SUPPORT (1):	5.5" X 16" X 27" (14 X 30 X 58 CM)
SMALL TORSO WEDGE:	2.5" X 16" X 23" (6 X 41 X 58 CM)
LARGE TORSO WEDGE:	3.5" X 16" X 29" (9 X 41 X 74 CM)
ADJUSTER PAD (2):	1" X 7" X 12" (3 X 18 X 30 CM)
ADJUSTER PAD (2):	1" X 8" X 16" (3 X 20 X 41CM)
8" 1/2 ROUND ANKLE BOLSTER:	2" X 8" X 26" (5 X 20 X 66 CM)
8" SEMI-ROUND ANKLE BOLSTER:	6" X 8" X 26" (15 X 20 X 66 CM)
PADDING:	MEDICAL GRADE
UPHOLSTERY:	TERRATOUGH™ (Coal is standard)
FRAME:	RADIOLUCENT FRAME
WARRANTY	· Frame - 2 years · Upholstery and Padding - 1 year
REGULATORY:	FDA listed, CE marked

made in the USA
with US & imported parts



Please refer to our Pain Management Positioning brochure for more detailed information with examples of setup and application.

The Spine Positioning System is an integral component of the pain management fluoroscopy suite. With this system, procedural set up time is reduced, patient comfort is enhanced, and unwanted movement is minimized. Most importantly, the target anatomy is more readily visualized, which allows the physician to perform spine procedures in a more efficient and secure manner.

OAKWORKS® designed the Spine Positioning System in an effort to achieve the critical balance between optimal imaging and patient comfort. The radiolucent adjustable frame and versatile padding system provide a metal-free imaging support platform capable of quickly positioning a wide variety of patient physiques. The adjustable face rest position provides individualized positioning for all types of cervical procedures and anatomy. The contoured torso support pad is complimented by a host of uniquely shaped and sized adjuster pads and wedges that enable a multitude of positioning combinations for ideal patient comfort and imaging needs for all spinal column procedures.

The Spine Positioning System was designed with the input of experienced interventional spine physicians under the direction of Paul Dreyfuss, MD. An extensive trial period was undertaken such that various modifications were made to accommodate the precise needs of the interventional pain physician and their patients.

PRIMARY ADVANTAGES OF THE SPINE POSITIONING SYSTEM:

- No metal (radiopaque) components are present under the spine- unobstructed visibility of the entire spine from C0-C1 to the coccyx with all imaging angles (AP, oblique and lateral). All radiopaque components are placed proximal to the forehead.
- Adjustment easily made to maximize opening and imaging of the cervico-thoracic junction.
- Secure and easy to use single locking face rest mechanism to adjust cervical flexion, extension and height.
- Torso pad elevation under the chest allows for the shoulders to drop out of the plane of imaging when obtaining a lower cervical and upper thoracic lateral and oblique views.
- Adequate free space under open air face section for aeration, supplemental O2, jaw/face contact as necessary; prevents patient overheating and easy communication with the patient without sound muffling.
- Contoured torso support allows the shoulders to drop yet be adducted/slightly extended next to the body for comfort where they are also less likely to lose position/fall off the fluoroscopic table.
- Current design obviates the need to pull the arms back to the side to obtain imaging of the cervico-thoracic junction; the more comfortable adducted and slightly extended position suffices.
- Adequate adjuster pads to maximize torso build up for larger frame patients.
- Not only for cervical cases; also useful for thoracic and lumbar cases.
- Comfortable for patients with cervical pain when longer duration thoracic and lumbar cases are performed.
- Softer foam under the breasts and shoulders for comfort; firmer central foam for enhanced stability.
- Wider and longer torso pad gives extra support resulting in less sway and improved patient comfort.
- Torso pad with abdominal recess for extra comfort and support.
- All prone positioning needs met with the SPS; no need for additional pillows.
- Very firm adjuster wedges prevent undue compression and loss of the original position.



See OAKWORKS® SPS in action!

Use your smartphone to see the SPS video for detailed instructions & application demonstrations or watch online at www.oakworksmed.com.



THE FOLLOWING SCENARIOS IN FACTITIOUS PATIENTS WILL DEMONSTRATE:

- Various body types using the Spine Positioning System
- Their positioning and specific configurations of the Spine Positioning System used in particular clinical situations
- Various fluoroscopic images of these factitious patients that exemplify the value of the Spine Positioning system

PATIENT - LIZ

COMPONENTS USED: Platform Frame (1), Crescent Face Cushion (1), Contoured Torso Support Pad (1), Large Contoured Torso Wedge (1), 8" Semi-Round Bolster (1 - not pictured)



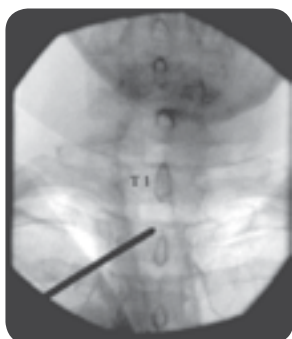
SPS set up for Liz shown here



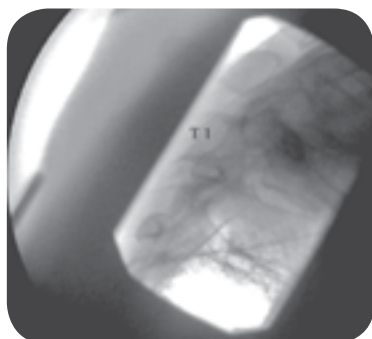
Liz in the SPS while obtaining an AP image of the upper thoracic spine.



Liz in the SPS while obtaining a lateral image of the upper thoracic spine.



AP image visualizing the T1-2 interlaminar space.



Lateral image primarily through the C7—T2 segments.



Contralateral oblique showing the upper thoracic facet joints.



SPINE POSITIONING SYSTEM

PATIENT - CARL

COMPONENTS USED: Platform Frame (1), Crescent Face Cushion (1), Contoured Torso Support Pad (1), Small Contoured Torso Wedge (1), 7" x 12" Rectangular Adjuster Pad (1), 8" x 16" Rectangular Adjuster Pad (2), 8" Semi-Round Bolster (1 - not pictured)

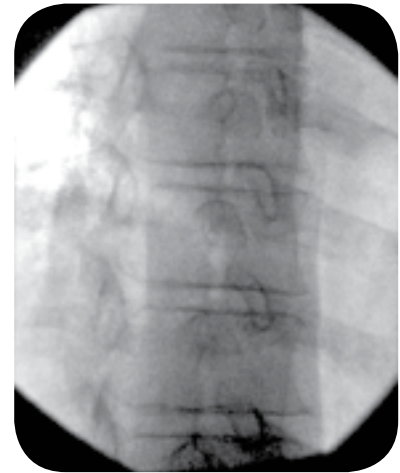
NOTE: Additional adjuster pad is placed under the lumbar spine to reduce lordosis.



SPS set up for Carl shown here



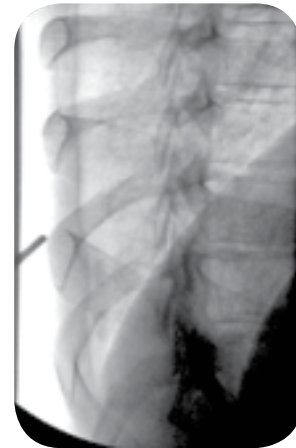
Carl in the SPS while obtaining an AP image of the mid-thoracic spine



Right thoracic oblique image to visualize the trajectory for a transforaminal injection



AP image of the mid-thoracic spine for planning the trajectory for a left thoracic facet injection



Contralateral oblique showing the trajectory for targeting the mid-thoracic facet joint

made in the USA
with US & imported parts



OAKWORKS[®]
MEDICAL

ACCESSORIES

PATIENT SAFETY STRAP



- **INCLUDED** with all Imaging Tables & Urology /Lithotripsy Tables
- **Easily adjusted and repositioned with Velcro®**
- Durable radiolucent material

The Patient Safety Strap helps eliminate unwanted patient movement and injury during surgical procedures. The strap is easily adjusted to accommodate a variety of patient sizes.

6" ADJUSTABLE T-RAIL CLAMP



- **Can be attached at any designated location on the table**
- Accommodates a variety of T-rail attachable accessories

The adjustable T-Rail clamp can be positioned along the grooved table top edge. Clamp is also removable. (For all Models except DTPM300)

FIXED T-RAIL ATTACHMENT



- **Custom lengths available**
- Accommodates a variety of T-rail attachable accessories

The fixed T-Rail attachment is available for the DTPM300 table. 78" full length or custom sizes offered.

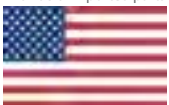
CARBON FIBER ARM BOARD



- **180° range of motion**
- Compatible with all tables
- Requires no mounting or attachment hardware - slides under table top pad
- Comes with removable pad
- Folds for safe and compact storage

The OAKWORKS® Carbon fiber arm board is fully radiolucent with a 180° range of motion. The arm board requires no mounting or attachment hardware and simply slides under the table top pad. This product can be used on any fluoroscopy table and can support arms and feet in a variety of positioning configurations. This unique design allows the product to be folded together for safe and compact storage when not in use.

made in the USA
with US & imported parts



ACCESSORIES

FLUORO EXTENDER



- **Made of radiolucent, polycarbonate material**
- Organic shape is conducive to a variety of table placement applications
- 30" long x 23.5" wide x 1/4" thick
- Can be used with any fluoroscopy table
- Inserts under the table top pad

The OAKWORKS® Fluoro Extender is radiolucent and offers extra width only where you need it for greater positioning accuracy with optimum imaging. The Fluoro Extender is inserted under the table top pad. This optional accessory can be used with any Fluoroscopy Table.

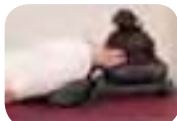
ARM HAMMOCK



- **Easily attached to the Integrated Head Rest**

This unique product will comfortably and easily support your patient's arms when prone. Eliminate the awkward feeling your patients experience by not knowing where to place their arms.

OAKWORKS® PRONE PILLOW



Prone Position



Supine Position

- Soft contact surfaces offer exceptional support
- Design has large vent areas for easy breathing
- **Low profile reduces cervical extension/flexion**

The OAKWORKS® Prone Pillow is an affordable radiolucent solution for both simple prone and supine patient positioning as well as advanced positioning for imaging applications. This patented pillow is ideal for basic cranial positioning and contains no metal, making it fully compatible with c-arm imaging systems, CT imaging systems and MRI systems. Oakworks' advanced lower profile design reduces excessive cervical extension/flexion while the resilient platform provides the optimal support needed to ensure your patient stays comfortable, still and compliant throughout treatment.

OAKWORKS®
MEDICAL

made in the USA
with US & imported parts





OAKWORKS MEDICAL TABLES & ACCESSORIES

Please visit our website, www.oakworksmed.com, to view our complete line of tables and accessories for C-arm Imaging, Pain Management, Ultrasound, Urology, Lithotripsy, Exam and Treatment.



*4 movement -
Echocardiography
Ultrasound Table*



*3 movement -
Vascular Table*



*OAKWORKS® 100 Series
Procedure Chair*

OAKWORKS®
MEDICAL



made in the USA
with US & imported parts

