

PLEASE
PLACE
STAMP
HERE

NCM INSURANCE AGENCY
350 CORVETTE DRIVE
BOWLING GREEN, KY 42101

Go with the specialist

You can insure your collector car on a standard auto policy, but why? It will give you less and likely cost you more. With NCM Insurance Agency you get:

- Agreed value settlement
- More included coverage and options
- Discounts up to 45 percent
- Flexible payment options
- Expert claims handling

Go with the leader

American Modern's property and casualty companies have been national leaders in specialty insurance since 1965. The company's financial stability is rated A+ (Superior) by A.M. Best Company, an independent insurance analyst. Based in Cincinnati, Ohio, American Modern is a Trusted Choice company partner.



Go paper-free

Online Services eliminates unwanted paper by giving you 24/7 online viewing access to your policy and billing documents.

Take a second green step and automate your bill payments with EZPay. You'll never be late on a payment, and it saves you money, too, with our lowest service fee.

To sign up for both Online Services and EZPay go to www.amig.com.



This brochure only summarizes our program. Read your policy carefully to fully understand the coverage, terms, conditions, limits and exclusions.

American Modern Insurance Group includes the following companies:
In CA: AFH Insurance Company and American Modern Insurance Company.
Other States: American Modern Home Insurance Company, American Family Home Insurance Company, American Western Home Insurance Company, American Southern Home Insurance Company, American Modern Lloyds Insurance Company, American Modern Insurance Company of Florida, Inc., American Modern Surplus Lines Insurance Company and American Modern Select Insurance Company.
The NCMInsuranceAgency is a part of the National Corvette Museum Foundation, Inc., located in Bowling Green, Ky.
DBA Corvette Museum Insurance Agency in CA
© American Modern Insurance Group 2010



The NCM Insurance Agency focuses largely on providing Collector Car Insurance for your Corvette or any other collector car.

As part of the National Corvette Museum, our business is Corvettes, but the NCM Insurance Agency insures any make or model that is considered a Collector Car. While you are protecting your car, you are also helping to preserve the legacy of the Corvette and the National Corvette Museum by buying Collector Car insurance through the NCM Insurance Agency.



For more info, contact
Adam Boca
NCM Insurance Agent
877.NSUR.NCM
(877-678-7626)
270-467-8853
adam@corvettemuseum.org

You can also visit our website for a free quote at www.ncminsurance.com.

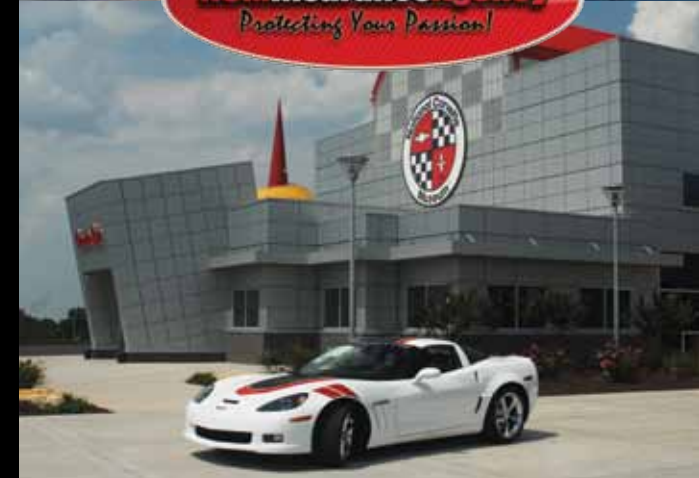
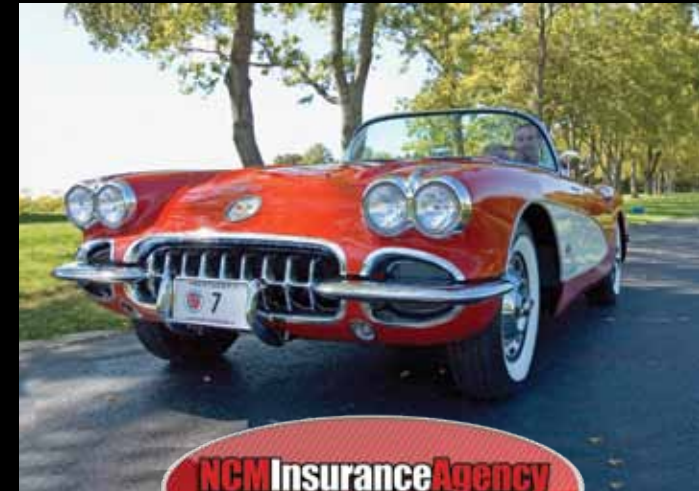


Download our FREE iPhone/iPad app!



350 Corvette Drive
Bowling Green, KY 42101
270.781.7973 | 800.53.VETTE (838883)
www.corvettemuseum.org

insurance



Protect Your Passion

*Collector Car
Insurance*



Whether it's for a new car, classic car or a prized collection, the National Corvette Museum and American Modern have one of the most inclusive collector vehicle programs in the industry.

	Policy Feature	What You Should Know
Eligibility	Broad Usage	It's a nice day and you want to take the vehicle out. We won't restrict you from enjoying your passion. We have fewer usage restrictions than most companies.
Loss Settlement	Agreed Value	Once we agree on a value for your prized possession, that's what you'll get in the event of a total loss. No depreciation or questioning the vehicle's value.
Included Coverage	Mileage Options	We don't believe in "one size fits all". We have four annual mileage plans including unlimited miles. Pick the plan that best fits your vehicle use and save money. (1,000, 3,000, 6,000) Rollover miles are included.
	One Liability Charge	We charge one flat rate regardless of the number of vehicles on the policy, saving you money.
	Spare Parts	We include \$2,000 for lost or stolen spare parts.
Optional Coverage	Trip Interruption Coverage	We'll pay up to \$600 for transportation, lodging and expenses if your vehicle becomes disabled more than 50 miles from home.
	Enhanced Towing	Expands towing coverage to \$200 per occurrence and enrolls your vehicle into our National Roadside Assistance program.
	Full Safety Glass	We waive the deductible if a windshield requires replacement and there is no other vehicle damage.

Helping the Museum

While you are protecting your car, you are also helping to preserve the legacy of the Corvette and the National Corvette Museum by buying Collector Car insurance through the NCM Insurance Agency.

New purchases

Any new addition to your collection is covered for 30 days up to \$50,000. If you need higher limits ask about our special Collector's Coverage.

Broad Eligibility

Hobbyists and collectors are turning to American Modern to protect muscle cars and antiques, classics and newer exotics, street rods and customs, even kit cars.

Broad deductible options

From \$0 to \$10,000 on all vehicle types

Discounts

- Larger collections and higher valued vehicles
- NCM membership
- Anti-theft device
- Accident prevention course

Not all coverages, options or discounts are available on policies in all states.

Roadside Assistance Program

- Flat tire repair
- Guaranteed flat bed towing
- Lock-out assistance
- Fuel Delivery
- 1-800 emergency number available 24/7

VISIT WWW.NCMINSURANCE.COM FOR YOUR FREE QUOTE!

Vehicle Information If you have additional vehicles, please include those on a separate sheet of paper.

Make/Model/Year	Value	Miles Per Year

Deductible: \$ _____
 Current Limits of Liability on Bodily Injury: \$25k/\$50k \$50k/\$100k
 \$100k/\$300k \$250k/500k
 Current Limits of Liability on _____ \$25k/\$50k \$50k/\$100k
 \$100k/\$300k \$250k/500k

Free Quote Request

Name _____ Birthdate _____
 Address _____
 City _____ Zip/Postal Code _____
 State _____
 Phone _____
 E-mail Address to send quote to _____

NCM Member? Yes No
 If no, would you like for us to include pricing on if you were a member?
 Yes No

DETACH AND MAIL BACK TO:
 NCM INSURANCE, 350 CORVETTE DRIVE, BOWLING GREEN, KY 42101
 OR GET A FREE QUOTE AT WWW.NCMINSURANCE.COM

